

1200 EAST PARIS AVE SE
GRAND RAPIDS, MICHIGAN

RETAIL FOR LEASE
1,897 Square Feet Available



**SIGNATURE
ASSOCIATES**
KNOW SIGNATURE | KNOW RESULTS

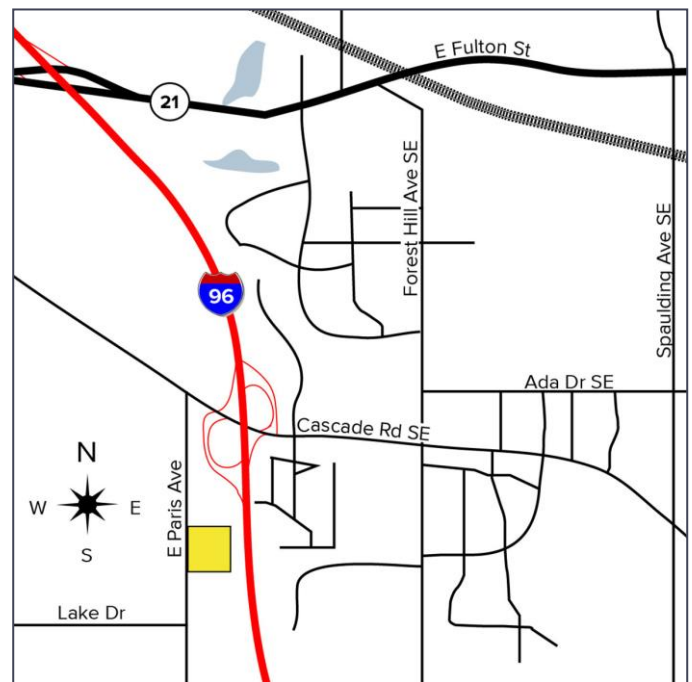
FORMER TRAILHEAD CAFE



PROPERTY FEATURES

- 1,897 square feet available
- Located on hard corner
- C-1 zoning
- Built in 1996
- Lease Rate: \$25.00/sf NNN (\$3,952/mo)

Comments: Wide open retail suite along busy East Paris Avenue. High ceiling exposure, ample window frontage, and open concept to accommodate your needs. Site provides ample parking, great signage and visibility from East Paris Avenue. Join O'Brien's Deli, Bill & Paul's and Groskopf Luggage. Perfect for small salon, gym/yoga, coffee shop, or a variety of other retail uses.



For more information, please contact:

JOE RIZQALLAH
(616) 822 6310
jrizqallah@signatureassociates.com

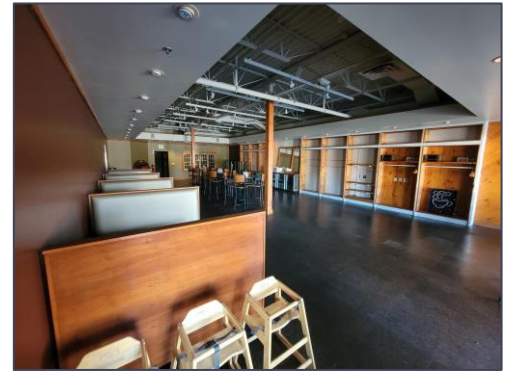
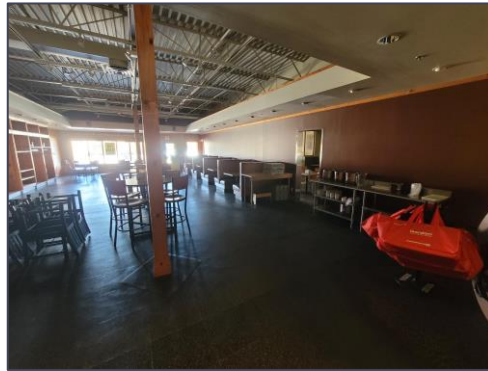
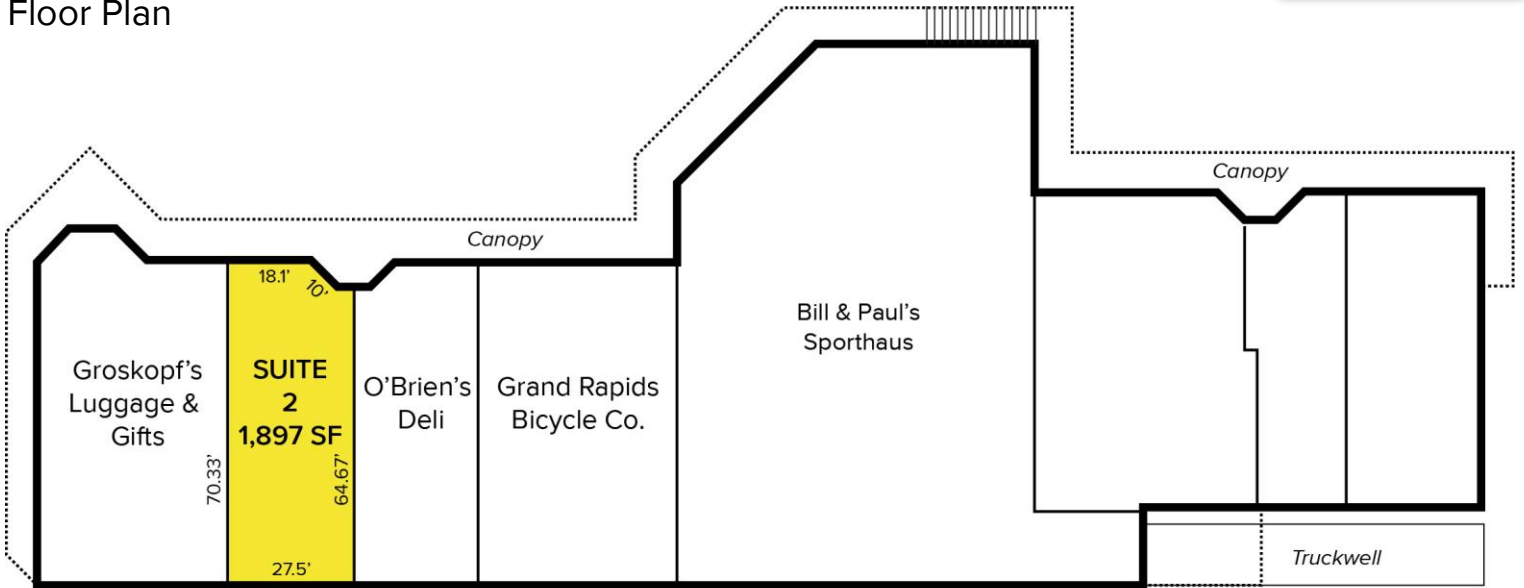
SIGNATURE ASSOCIATES
1188 East Paris Ave SE, Suite 220
Grand Rapids, MI 49546
www.signatureassociateswm.com

1200 East Paris Ave SE – Grand Rapids, Michigan

Retail For Lease

1,897
Square Feet
AVAILABLE

Floor Plan



DEMOGRAPHICS		
	POPULATION	MED. HH INCOME
1 MILE	4,539	\$89,393
3 MILE	56,617	\$92,262
5 MILE	180,516	\$73,656

TRAFFIC COUNTS (TWO-WAY)	
14,644	East Paris between Cascade & Lake
19,537	Cascade southeast of East Paris
21,600	East Paris north of Burton
16,654	East Paris south of Burton

For more information, please contact:

JOE RIZQALLAH
(616) 822 6310
jrizzqallah@signatureassociates.com

SIGNATURE ASSOCIATES
1188 East Paris Ave SE, Suite 220
Grand Rapids, MI 49546
www.signatureassociateswm.com

1200 East Paris Ave SE – Grand Rapids, Michigan

Retail For Lease

1,897
Square Feet
AVAILABLE

Aerial



For more information, please contact:

JOE RIZQALLAH

(616) 822 6310

jrizqallah@signatureassociates.com

SIGNATURE ASSOCIATES

1188 East Paris Ave SE, Suite 220

Grand Rapids, MI 49546

www.signatureassociateswm.com