



FORMER ALABAMA POWER CREW HEADQUARTERS

MONTGOMERY, ALABAMA

SALE/LEASE

2460 E Fifth Street
Montgomery, AL 36106

TOTAL SIZE

42,501 SF

STRUCTURES

3 Buildings

LAND AREA

7.2 Acres
± 7 Acres of concrete

CEILING HEIGHTS

± 18'

ZONING

M-1, Light Industrial

SALE PRICE

\$1,300,000

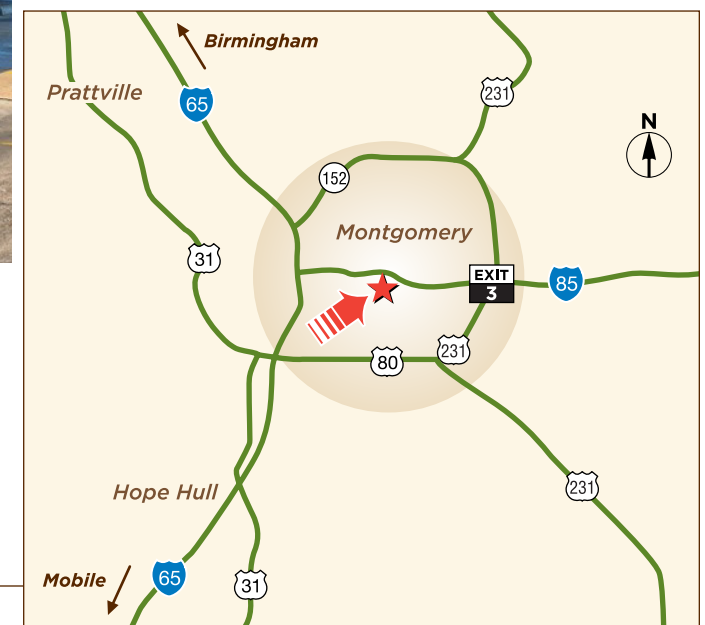
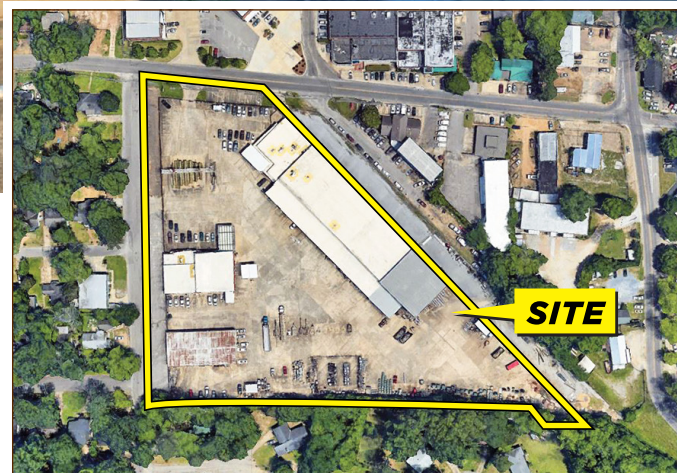
LEASE RATE

\$2.75 PSF, NET

► See Site Plan on Reverse Side

EXCLUSIVE AGENT

John Coleman, SIOR
johnc@grahamcompany.com
205.871.7100



110 Office Park Drive
Suite 200
Birmingham, AL 35223

TEL 205.871.7100
FAX 205.871.3331
grahamcompany.com

Information deemed reliable, but not guaranteed.

7/25/17 JC



FORMER ALABAMA POWER CREW HEADQUARTERS

MONTGOMERY, ALABAMA

BUILDING A

SIZE

± 27,904 SF

USE

Warehouse & Office

FEATURES

- 4 Steel overhead doors
- Additional ± 7,300 SF attached steel canopy
- Central heating & air in office, heated warehouse
- New roof 2013

BUILDING B

SIZE

± 9,900 SF

USE

Office & mechanical shop

FEATURES

- 8 Steel overhead doors
- Central heating & air in office

BUILDING C

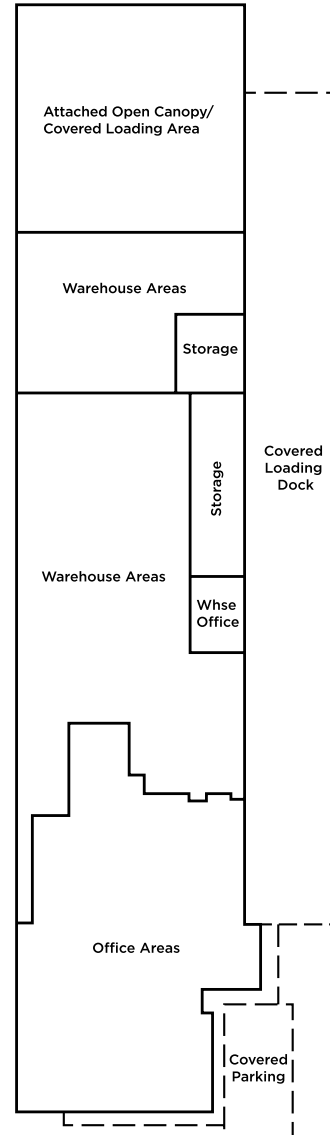
SIZE

± 4,697 SF

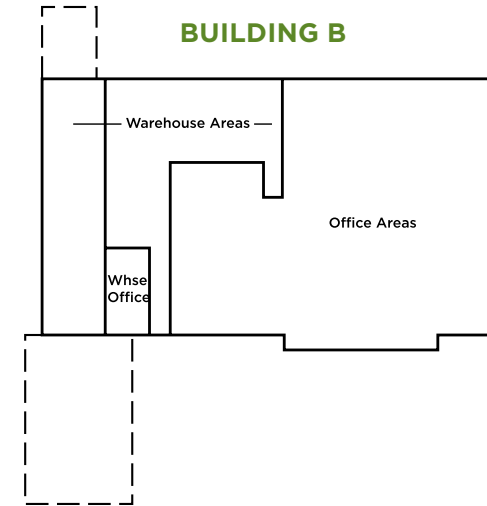
USE

3 Interior warehouse bays, 2 exterior bays

BUILDING A



BUILDING B



BUILDING C

