



Shed 12/14 Concept Drive Delacombe VIC

ATTENTION: Ballarat Tradies, Business Owners & Investors

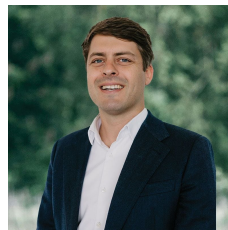
8-metre ceilings. 372m² of usable space. A high-clearance roller door. And natural light most warehouses can only dream of.

Located at 12/14 Concept Drive, Delacombe.

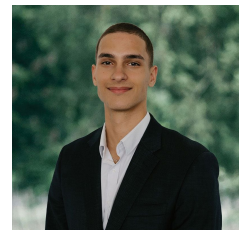
Here's what most industrial sheds get wrong: they're either big enough OR in a good location. Rarely both.

This one? You're 5 minutes from Bunnings. A stone's throw from Delacombe Town Centre. And close enough to Ballarat CBD that clients actually show up.

Price : \$495,000
Building Size : 372 sqm
Land Size : 372 sqm
View : <https://www.ballaratrealestate.com.au/sale/vic/ballarat-western-district/delacombe/commercial/industrial/8646535>



Dominic Morrison
5331 2233
0409 557 461



Mason Bourke
5331 2233
0412 374 633