



Keegan & Coppin
COMPANY, INC.

FOR LEASE

879 LINDBERG LANE
PETALUMA, CA

Industrial Office Spaces
with Potential Yard Space



Go beyond broker.

REPRESENTED BY:

SARA WANN, PARTNER
LIC # 01437146 (707) 664-1400, EXT 308
SWANN@KEEGANCOPPIN.COM

NATHAN BALLARD, PARTNER
LIC # 01743417 (415) 461-1010, EXT 116
NBALLARD@KEEGANCOPPIN.COM



INDUSTRIAL OFFICE SPACES FOR LEASE



879 LINDBERG LANE
PETALUMA, CA

INDUSTRIAL OFFICES FOR LEASE

PROPERTY INFORMATION

Central Petaluma location immediately accessible from Highways 101 and 116, the main distribution arteries in and out of Petaluma. Close to many amenities including the Petaluma Gateway Shopping Center, and bustling downtown Petaluma.

LEASE TERMS

RATE

\$1.25 PSF NNN

TERMS

NNN (\$0.26 PSF)

3 - 5 year lease term preferred

ZONING

I - Industrial

AVAILABLE SPACE	DESCRIPTION
SUITE 202 450+/- SF	2nd floor nice open office.
SUITE 208 501+/- SF	2nd floor open office space with wood laminate flooring and soaring ceilings.
SUITE 212 863+/- SF	2nd floor office space currently configured with one large open work space/reception area and one large private office.

YARD SPACE: Opportunity to secure a small yard space which includes adequate space to place a storage container or park a few oversized vehicles. Yard must be rented in conjunction with office.

Keegan & Coppin Co., Inc.
1201 N McDowell Boulevard
Petaluma, CA 94954
www.keegancoppin.com
(707) 664-1400

The above information, while not guaranteed, has been secured from sources we believe to be reliable. Submitted subject to error, change or withdrawal. An interested party should verify the status of the property and the information herein.

REPRESENTED BY:

SARA WANN, PARTNER
LIC # 01437146 (707) 664-1400, EXT 308
SWANN@KEEGANCOPPIN.COM

NATHAN BALLARD, PARTNER
LIC # 01743417 (415) 461-1010, EXT 116
NBALLARD@KEEGANCOPPIN.COM

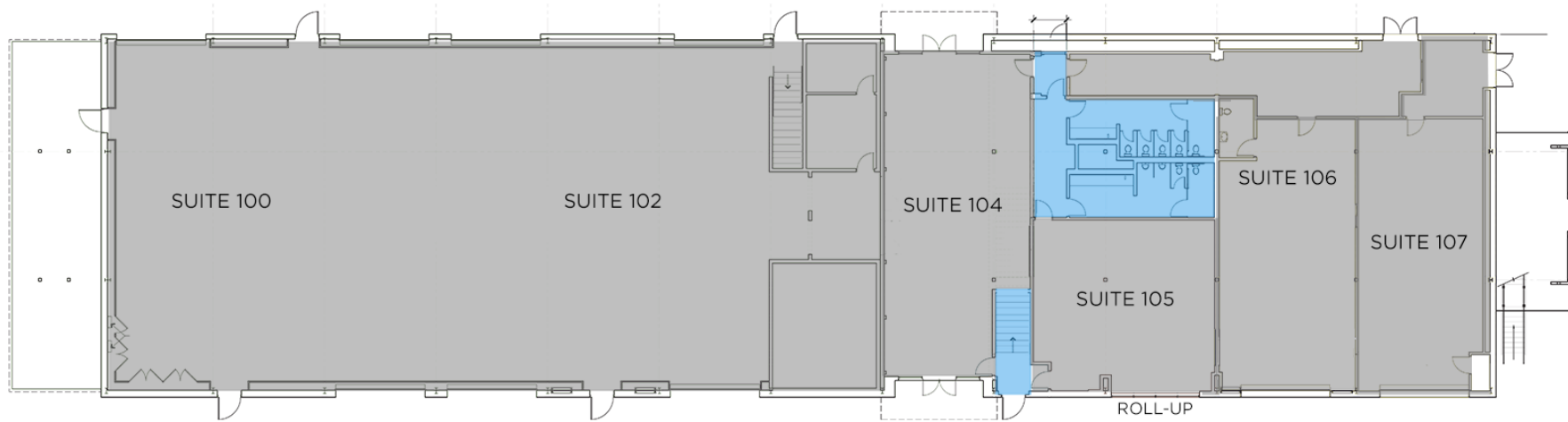




879 LINDBERG LANE, PETALUMA, CA FLOOR PLAN



879 LINDBERG LANE
PETALUMA, CA

**INDUSTRIAL OFFICES
FOR LEASE**



 = FIRST FLOOR COMMON AREA
 = AVAILABLE

PRESENTED BY:

SARA WANN, PARTNER
LIC # 01437146 (707) 664-1400, EXT 308
SWANN@KEEGANCOPPIN.COM

NATHAN BALLARD, PARTNER
LIC # 01743417 (415) 461-1010, EXT 116
NBALLARD@KEEGANCOPPIN.COM

The above information, while not guaranteed, has been secured from sources we believe to be reliable. Submitted subject to error, change or withdrawal. An interested party should verify the status of the property and the information herein.



879 LINDBERG LANE, PETALUMA, CA FLOOR PLAN - SECOND FLOOR



879 LINDBERG LANE
PETALUMA, CA

**INDUSTRIAL OFFICES
FOR LEASE**



 = SECOND FLOOR COMMON AREA

 = AVAILABLE

PRESENTED BY:

SARA WANN, PARTNER
LIC # 01437146 (707) 664-1400, EXT 308
SWANN@KEEGANCOPPIN.COM

NATHAN BALLARD, PARTNER
LIC # 01743417 (415) 461-1010, EXT 116
NBALLARD@KEEGANCOPPIN.COM

The above information, while not guaranteed, has been secured from sources we believe to be reliable. Submitted subject to error, change or withdrawal. An interested party should verify the status of the property and the information herein.



879 LINDBERG LANE, PETALUMA, CA AERIAL MAP



879 LINDBERG LANE
PETALUMA, CA

**INDUSTRIAL OFFICES
FOR LEASE**



PRESENTED BY:

SARA WANN, PARTNER
LIC # 01437146 (707) 664-1400, EXT 308
SWANN@KEEGANCOPPIN.COM

NATHAN BALLARD, PARTNER
LIC # 01743417 (415) 461-1010, EXT 116
NBALLARD@KEEGANCOPPIN.COM

The above information, while not guaranteed, has been secured from sources we believe to be reliable. Submitted subject to error, change or withdrawal. An interested party should verify the status of the property and the information herein. Map created using ArcGIS® software by Esri. ArcGIS® is the intellectual property of Esri and is used herein under license. Copyright © Esri.