

# 70 E WALTON ST

CHICAGO, IL

*Unprecedented Availability at The Walton*

SIGN

SIGN

ODYSSEY

This rendering is provided for conceptual and illustrative purposes only. No representation or warranty is made regarding the final appearance, materials, or feasibility of any depicted elements.



# 1,879 SF GROUND LEVEL RETAIL

*\*Amenities include valet parking outside your front door and additional 300 SF of basement storage*

Perfectly positioned at the base of The Walton Residences and located across from Bloomingdale's entrance at 900 N Michigan. 70 E Walton is also home to Mira Couture and George the Salon. Walton Street has emerged and become a stronghold in the Gold Coast with its current and upcoming roster of tenants.

*Rent*

Upon Request

---

108,304

Population

305,892

Daytime Population

*Possession*

Immediate

---

68,964

Households

\$187,497

Average Household  
Income

*Site Status*

Vacant

---

36

Median Age

*Neighbors*

---

bloomingdale's

ARITZIA

ksubi

TheRealReal

Wilson

lululemon

KITH

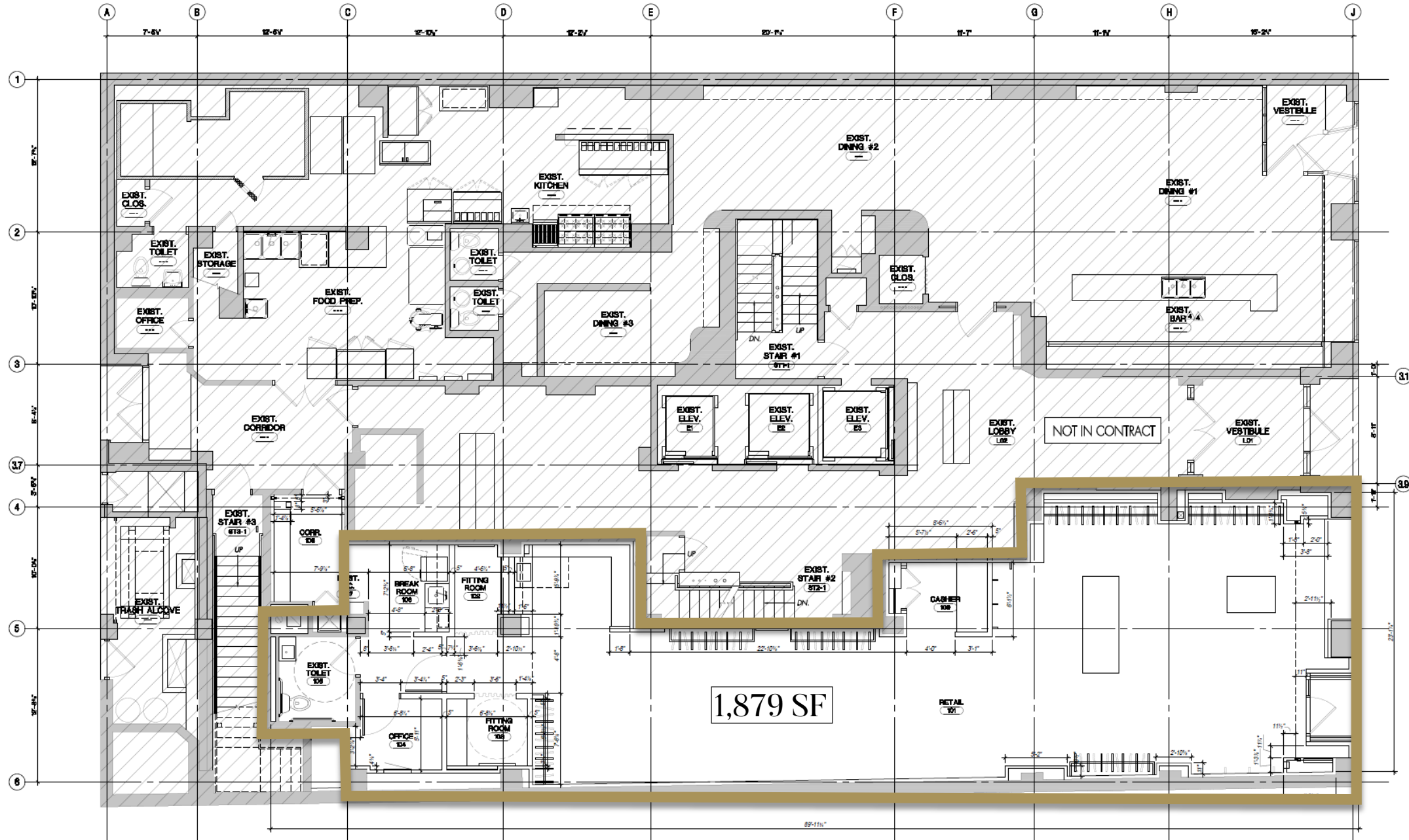
Reformation

AMIRI

patagonia®

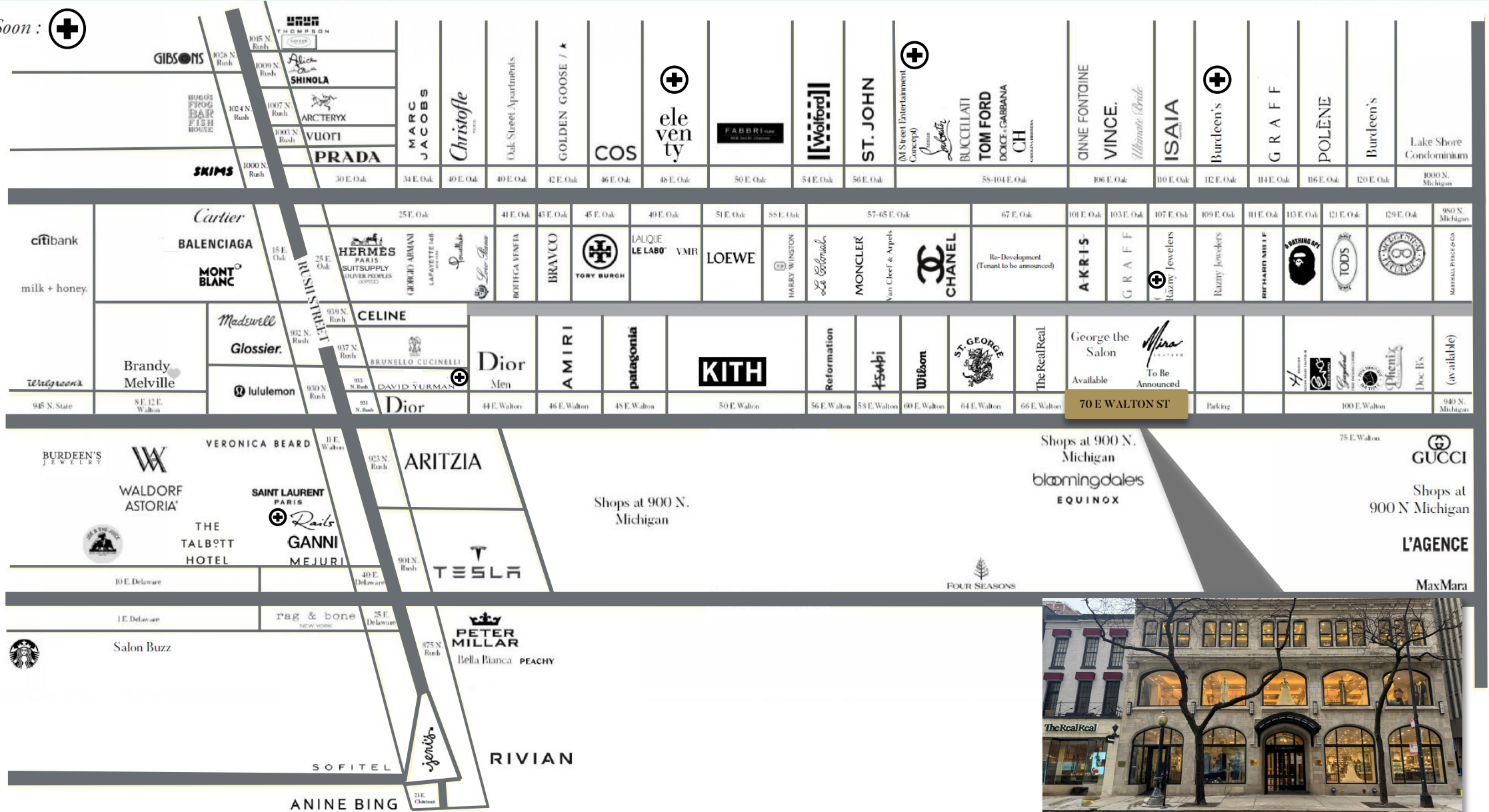
VERONICA BEARD





1,879 SF

Coming Soon : 



*Views from the Front*





Side Office



Dressing Room

*Views from the Back*



*For more information,  
Please contact:*

Sharon Kahan  
(312) 953-2994  
Sharon@odysseyretail.com

Amy Sider  
(847) 722-6225  
Amy@odysseyretail.com

ODYSSEY