



**CUSHMAN &
WAKEFIELD**



8,990 SF | SUBLEASE AVAILABLE

1 Main Street • Cambridge, MA

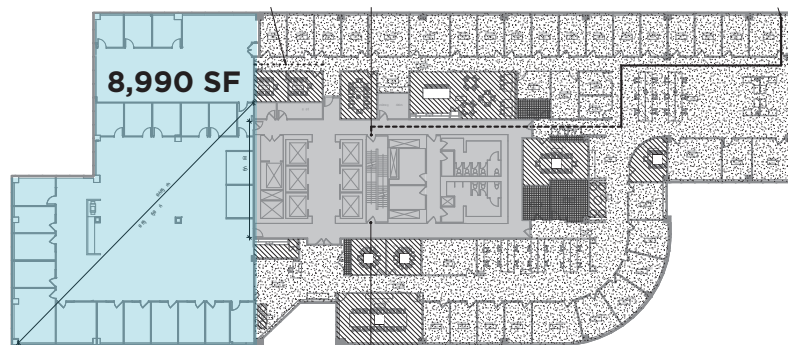
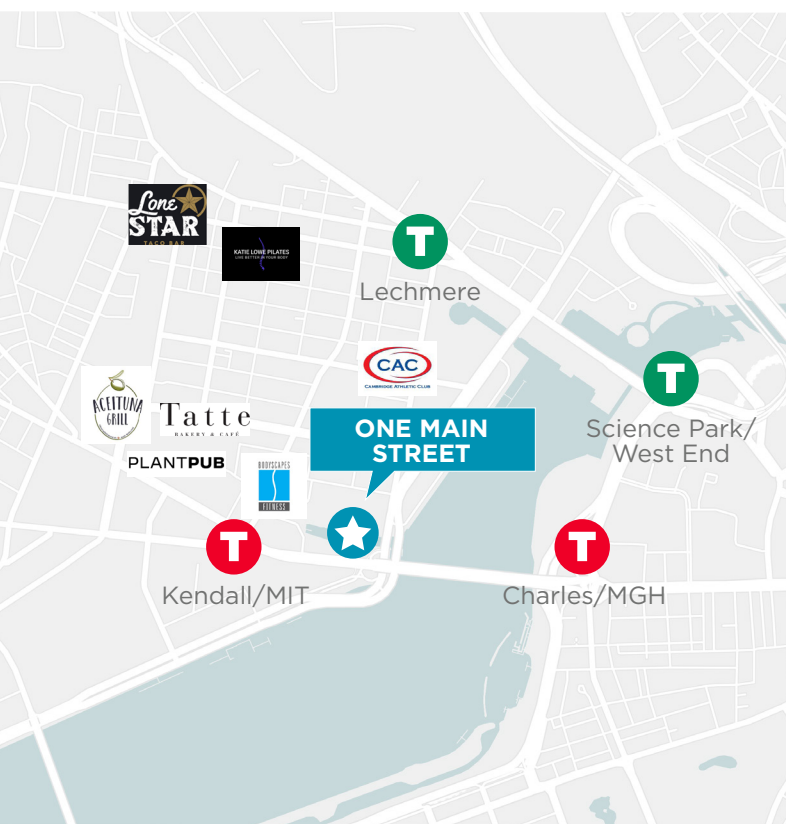
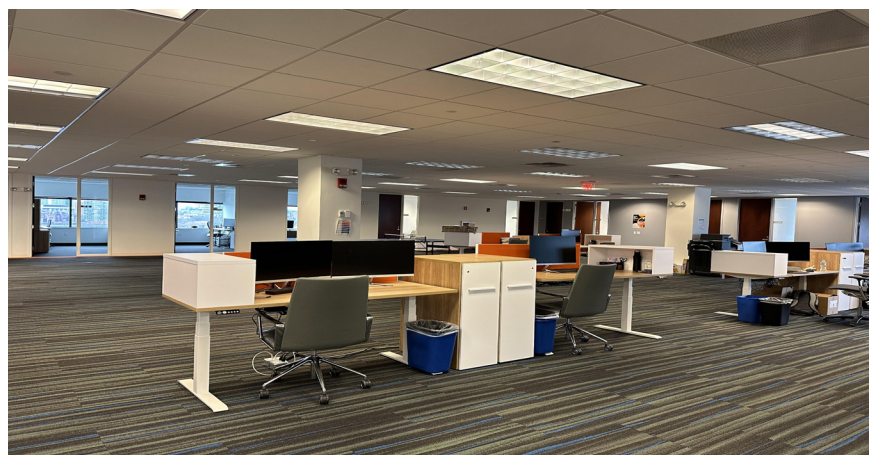
1 MAIN STREET CAMBRIDGE, MA

8,990 SF Available



PROPERTY HIGHLIGHTS

- 8,990 SF sublease
- Opportunity to lease space in the heart of Kendall Square
- Quick access to the Kendall Square MBTA Red Line Station
- Ample parking included
- Sublease term through 01/31/2025



ROBERT RICHARDS
+1 617 204 4104
robert.richards@cushwake.com

TALIA KUDAN
+1 617 219 7755
talialia.kudan@cushwake.com