

Blue.





Blue at **MediaCityUK** is not
your average office building.



Blue is a space with possibilities and opportunities, in a neighbourhood rooted in creative talent and digital innovation.

Located in the heart of MediaCityUK, Blue understands the power of a community and making meaningful connections.

Surround yourself with brands and talent in tech, media, and creative design, to accelerate your business and be part of an established hub with a reputation for excellence.



“The opportunities open to us with our move to MediaCityUK are only limited by our imagination. MediaCityUK will be the centre of the broadcasting universe for many years.”

David Holdgate, CEO of Satellite Information Services (SIS) - one of the world's leading companies in the television broadcasting industry based in Blue.

“For Carbon Digital, this is the place where everything is happening and being anywhere else just wouldn't be the same. It's such an exciting place to be and every day brings new companies and opportunities together.”

Sue McHugh, Managing Director of Carbon Digital - a VFX agency based in The Landing, Blue.



The Blueprint for brilliance.

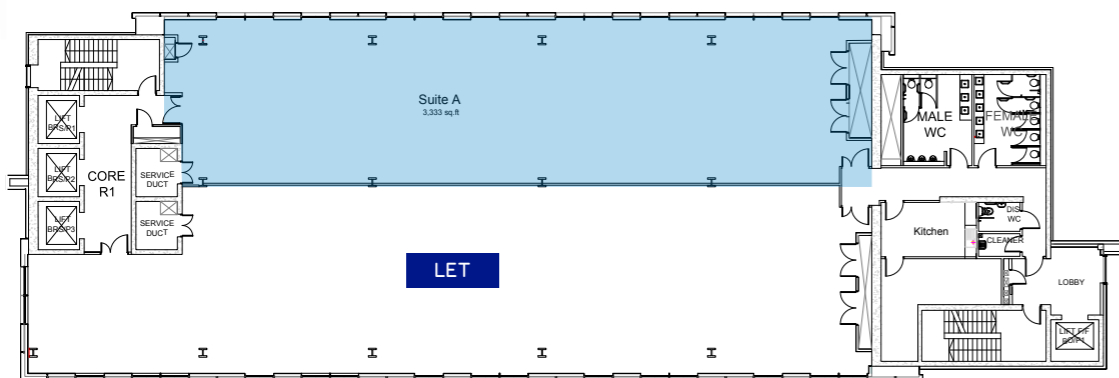
Blue is one of the best connected office buildings in the UK, with a Wired Score Platinum certification. Its best-in-class connectivity guarantees your business the highest level of digital infrastructure.



15th Floor
(example layout based on an occupational ratio of one person per 6 sq m)

Specification

- The office space is finished to a CAT A specification
- 24 Hour Access
- 1:500 sq ft Parking Ratio
- LED Lighting
- Full Access Raised Floors
- 4-Pipe Fan Coil Air Conditioning
- Suspended Ceiling
- 2.8m Floor To Ceiling Height



Part 14th Floor

Availability

Part 14th Floor	3,333 sq ft
15th Floor (example layout option)	8,204 sq ft
2nd Floor (fitted out post production suite)	6,782 sq ft

Destination.

Manchester Airport to MediaCityUK

 17mins  20mins

London to Manchester

 1hr 5mins

 2hrs 8mins

 3hrs 46mins

Birmingham to Manchester

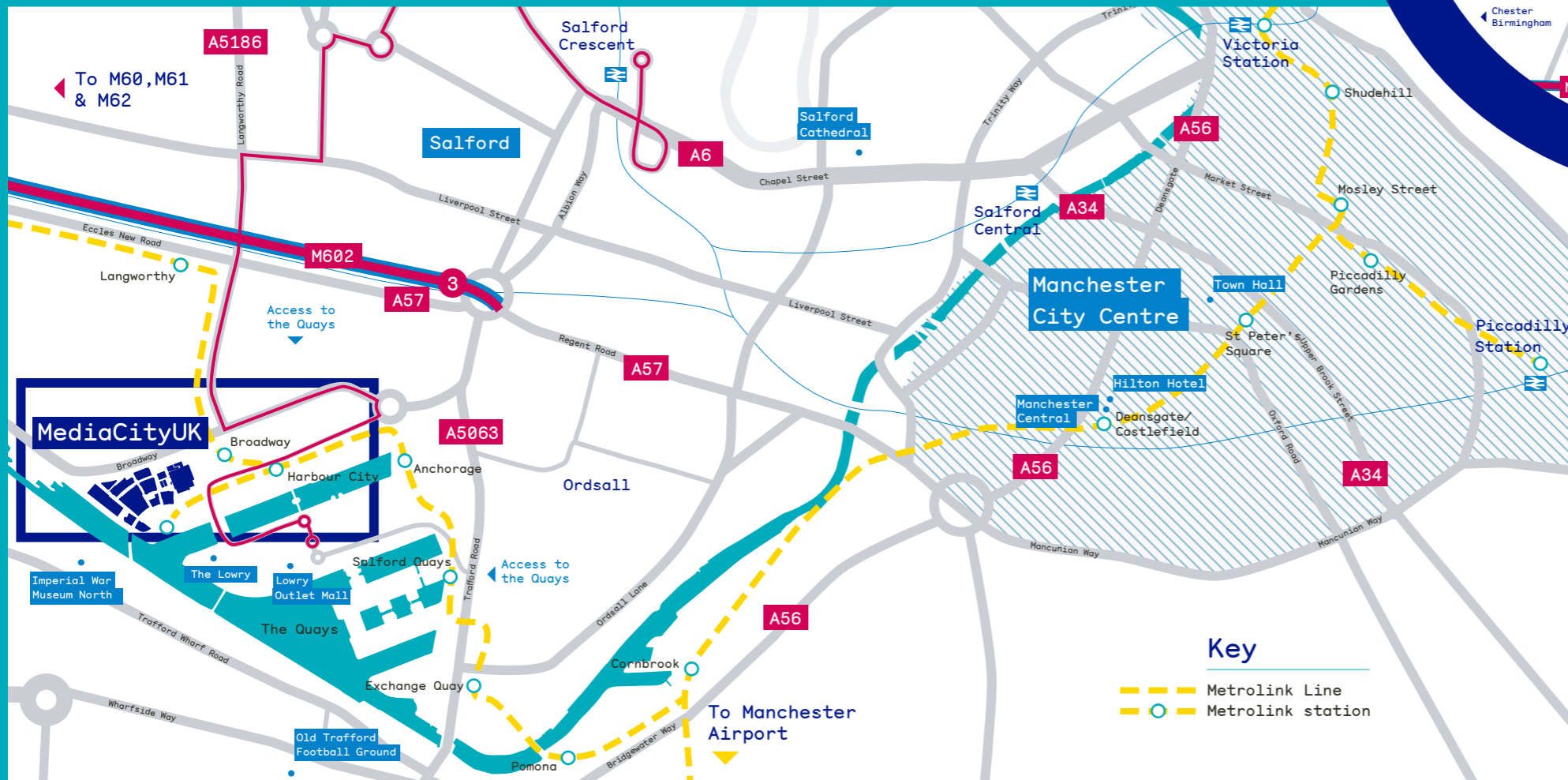
 1hr 28mins

 1hr 39mins



Liverpool to Manchester

 48mins

 40mins



Key

-  Metrolink Line
-  Metrolink station

Tram times

St Peter's Square	15mins
Victoria Station	27mins
Piccadilly Station	23mins
Exchange Square	26mins

Like a bolt
from the Blue.



Choosing a new home for your business is a very personal decision, and we understand that location is *everything*. Inspiring your workforce, elevating your brand, having access to the right people and places, are all things that the right location is essential for.

Manchester and Salford are leading the way for startup acceleration, tech disruption and digital innovation. MediaCityUK is at the heart of it all. The unique mix of major brands like the BBC, ITV, Kellogg's and SIS, with small and medium businesses in the tech, media and creative sectors, results in unparalleled collaboration and a fast track for growth.



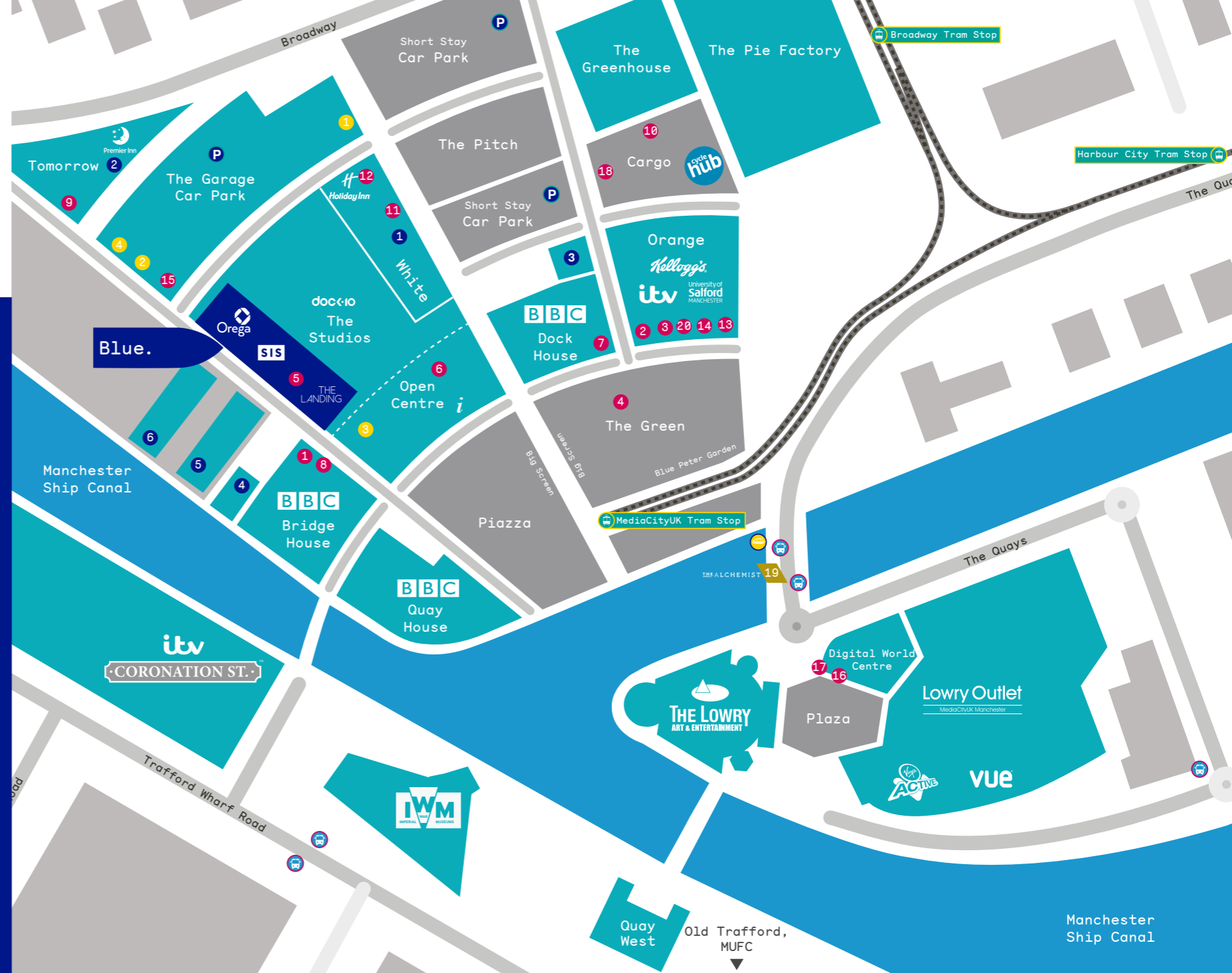
Amenities.

Retail & Services

- 1 Booths
- 2 Dental (first floor)
- 3 WHSmith
- 4 Flanagan's Barbers

Food & Drink

- 1 Costa
- 2 Prezzo
- 3 Wagamama
- 4 The Shack & Grill
- 5 Special 7
- 6 Penelope's Deli
- 7 The Dockyard
- 8 Pokusevski + Catena
- 9 Ziferblat
- 10 Nutribar
- 11 Starbucks
- 12 Marco's
- 13 Pret A Manger
- 14 CAU
- 15 Grindsmith
- 16 Craft Brew
- 17 Nandos
- 18 Cargo
- 19 The Alchemist
- 20 The Botanist



Hotel & Residential

- 1 Holiday Inn
- 2 Premier Inn
- 3 Number One
- 4 The Heart
- 5 Lightbox
- 6 Residential

Transport

-  Tram Stop
-  Bus Stop
-  Water Taxi
-  Car Park

Amenities.

More than just a place to base your business, this mix provides the recipe for unexpected opportunities that make a day at the office that little bit more exciting. Whether it's sitting in a live show audience for one of the UK's biggest TV productions, witnessing bespoke commissioned art installations on the piazza, or travelling to work along Manchester's waterfront by water taxi, an office at MediaCityUK is unlike anywhere else on earth.



For the
risk
takers,
big
thinkers,
fast
pacers,
future
makers.



Be bold. Be Blue.

ER