



Office Space for Sub Lease

**4510 BELLEVIEW AVENUE
KANSAS CITY, MISSOURI**

Property Highlights

- 2,250 sf available
- Completely renovated office building
- Located in West Plaza, close to the Plaza area restaurants, shopping and hotels
- Great accessibility via Southwest Trafficway
- Ample parking in attached covered structure and adjacent surface lot
- Keycard access system
- Lease rate \$22.00/sf

For information, please contact:

Debora Field

Managing Director

t 816-679-9508

dfield@nzimmer.com

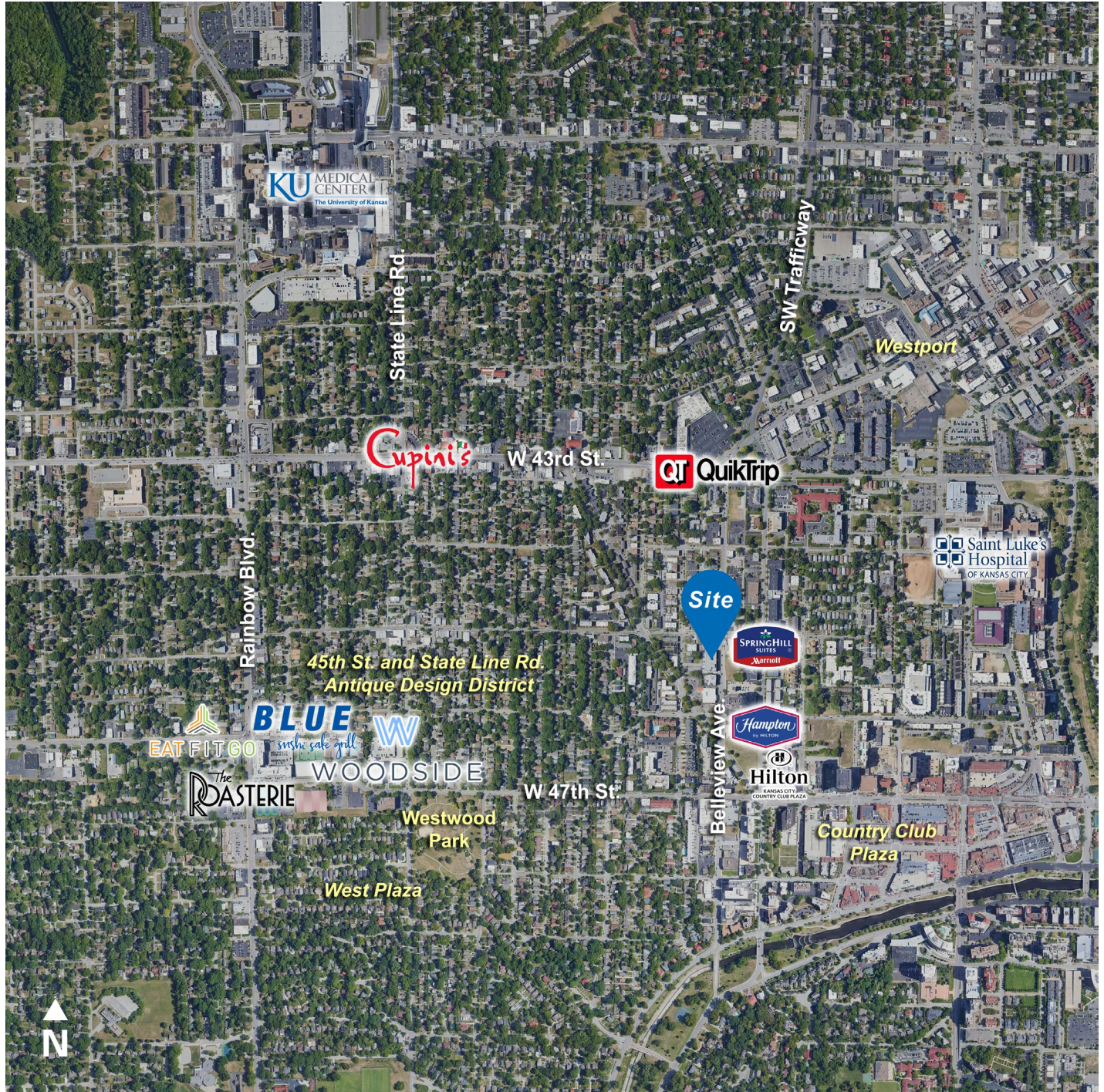
nmrkzimmer.com

1220 Washington Street, Suite 300
Kansas City, MO 64105

NEWMARK
ZIMMER



4510 BELLEVIEW AVENUE, KANSAS CITY, MISSOURI



CONTACT

Debora Field

Managing Director

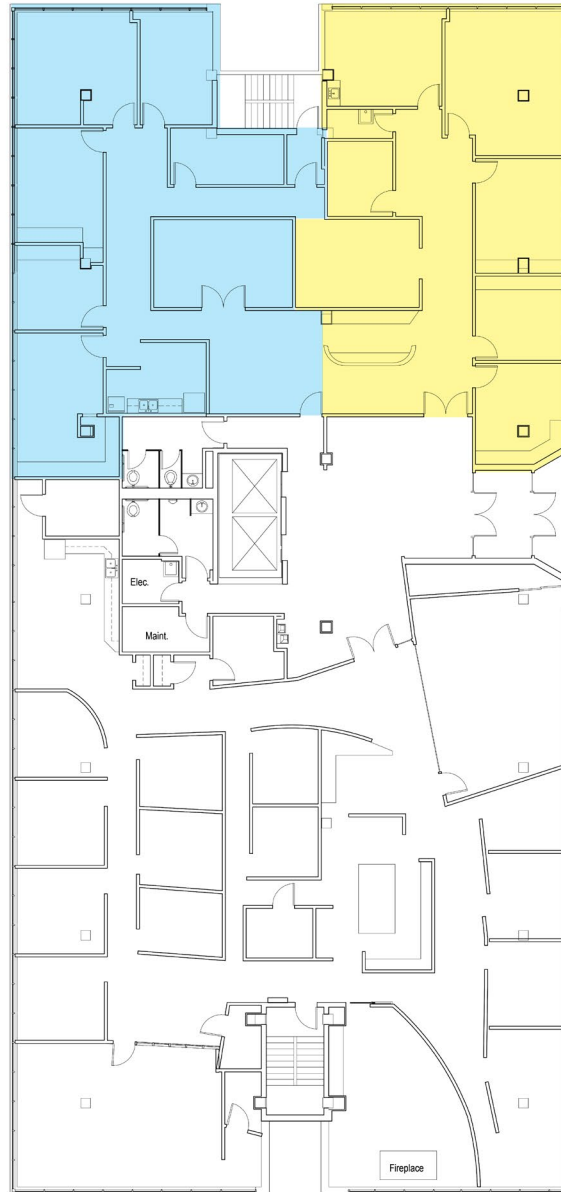
t 816-679-9508

dfield@nzimmer.com

nrmrkzimmer.com

4510 BELLEVIEW AVENUE, KANSAS CITY, MISSOURI

Floor Plan — ± 2,250



CONTACT

Debora Field

Managing Director

t 816-679-9508

dfield@nzimmer.com

nmrkzimmer.com