



**SUBLEASE AVAILABLE**



**1235  
SOUTH MAIN  
STREET**

*Suite 280 | Grapevine, TX*

**1,509 SF**

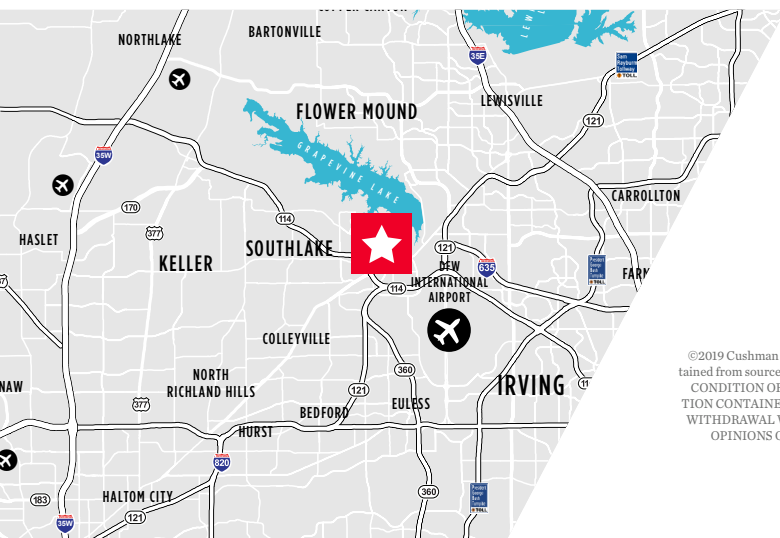
## *Property Highlights*

1,509 SF Available for Sublease

Flexible lease terms

Close proximity to restaurants

Sublease Expires June 30, 2021



**ADAM CURRAN**

Director

+1 972 663 9710

adam.curran@cushwake.com

2021 McKinney Ave., Suite 900 | Dallas, Texas  
Main +1 972 663 9600 | Fax +1 972 663 9999

**cushmanwakefield.com**

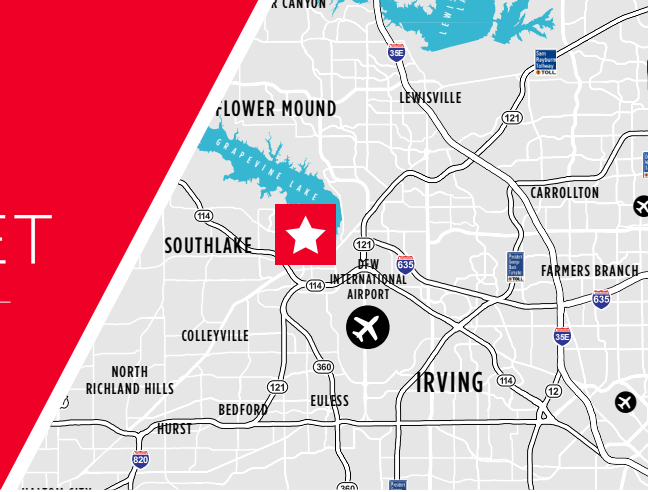
©2019 Cushman & Wakefield. All rights reserved. The information contained in this communication is strictly confidential. This information has been obtained from sources believed to be reliable but has not been verified. NO WARRANTY OR REPRESENTATION, EXPRESS OR IMPLIED, IS MADE AS TO THE CONDITION OF THE PROPERTY (OR PROPERTIES) REFERENCED HEREIN OR AS TO THE ACCURACY OR COMPLETENESS OF THE INFORMATION CONTAINED HEREIN, AND SAME IS SUBMITTED SUBJECT TO ERRORS, OMISSIONS, CHANGE OF PRICE, RENTAL OR OTHER CONDITIONS, WITHDRAWAL WITHOUT NOTICE, AND TO ANY SPECIAL LISTING CONDITIONS IMPOSED BY THE PROPERTY OWNER(S). ANY PROJECTIONS, OPINIONS OR ESTIMATES ARE SUBJECT TO UNCERTAINTY AND DO NOT SIGNIFY CURRENT OR FUTURE PROPERTY PERFORMANCE.



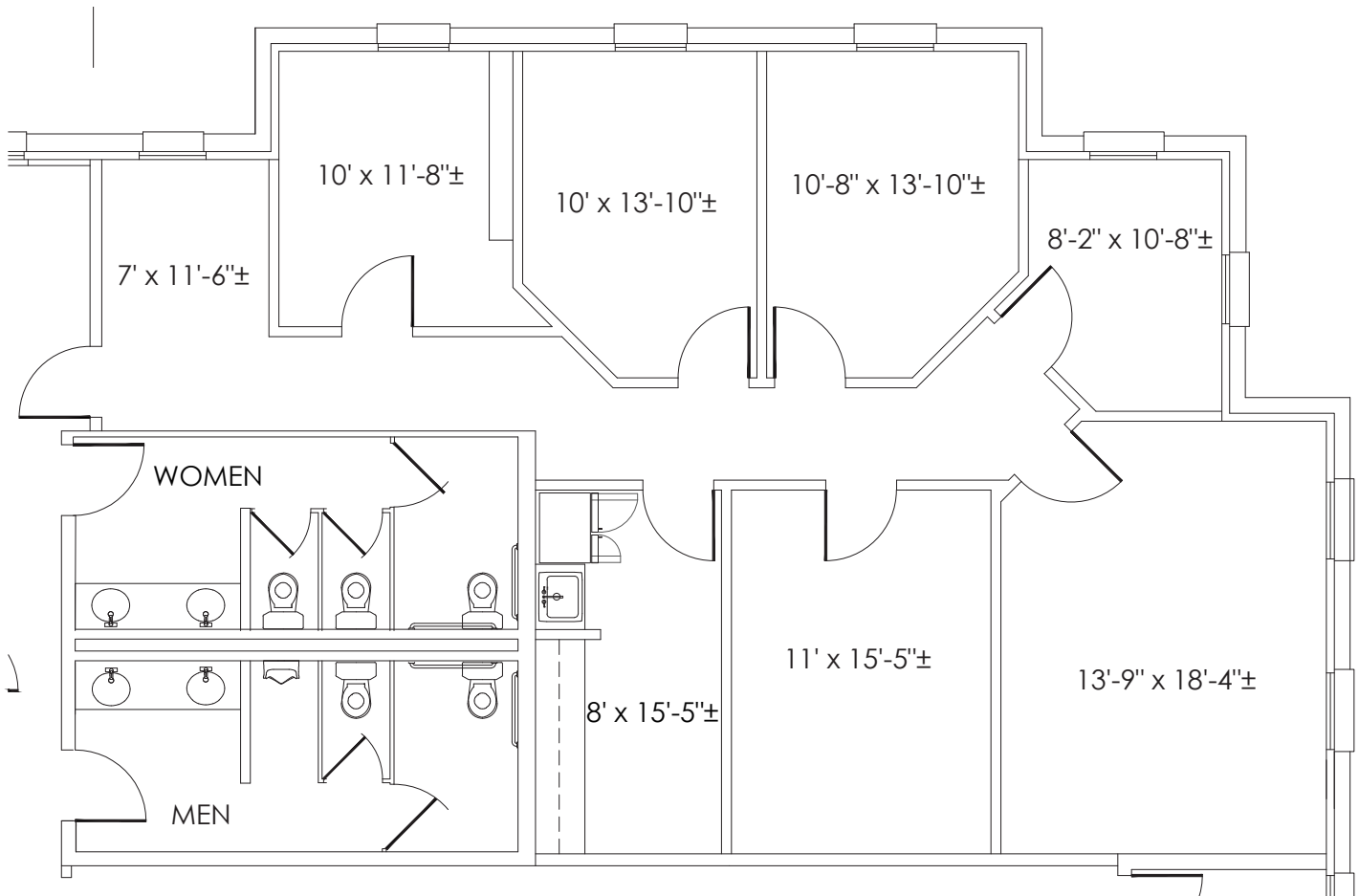
# 1235 SOUTH MAIN STREET

Suite 280 | Grapevine, TX 76051

1,509 SF



## FLOOR PLAN



### ADAM CURRAN

Director  
+1 972 663 9710  
adam.curran@cushwake.com

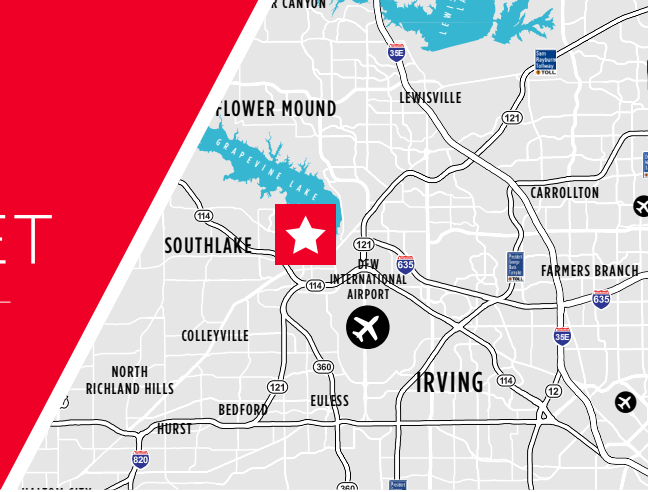
2021 McKinney Ave., Suite 900  
Dallas, Texas  
Main +1 972 663 9600  
Fax +1 972 663 9999  
[cushmanwakefield.com](http://cushmanwakefield.com)



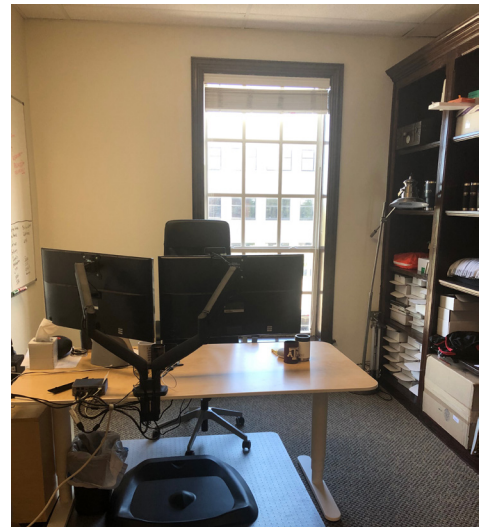
# 1235 SOUTH MAIN STREET

Suite 280 | Grapevine, TX 76051

1,509 SF



## PHOTOS



**ADAM CURRAN**  
Director  
+1 972 663 9710  
adam.curran@cushwake.com

2021 McKinney Ave., Suite 900  
Dallas, Texas  
Main +1 972 663 9600  
Fax +1 972 663 9999  
**cushmanwakefield.com**