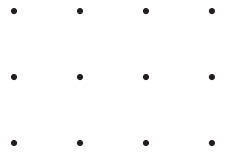


# Soboba Crossroads at Ramona Expressway and Main Street

## New Retail Available Near

### Brand New Soboba Casino



**Corner of Ramona Expressway and Main Street | San Jacinto, CA**  
**1,200–13,200 Sq Ft available**



Greg Engel Team is proud to introduce Soboba Crossroads, a new retail center just across from the entrance to the new Soboba Casino. Located at the signalized corner of Ramona Expressway and Main Street in San Jacinto, Luiseno Village will share the same lot with two retail pads (now available for ground lease) and one gas station (also available for ground lease). The new Soboba Casino will include a 200-room hotel, large banquet hall, and meeting facility for conferences and special events—slated for completion in Fall of 2019.

\*Call during pre-construction and ask about increased tenant improvement allowances and rent abatement.

#### Property Highlights:

- Opening last quarter of 2021
- Across from the entrance of new Soboba Casino
- Monument sign on Ramona Expressway
- Signalized intersection
- Great starting rates
- End cap locations still available
- Grease traps to be built into each unit
- Drive-through and restaurant pads available

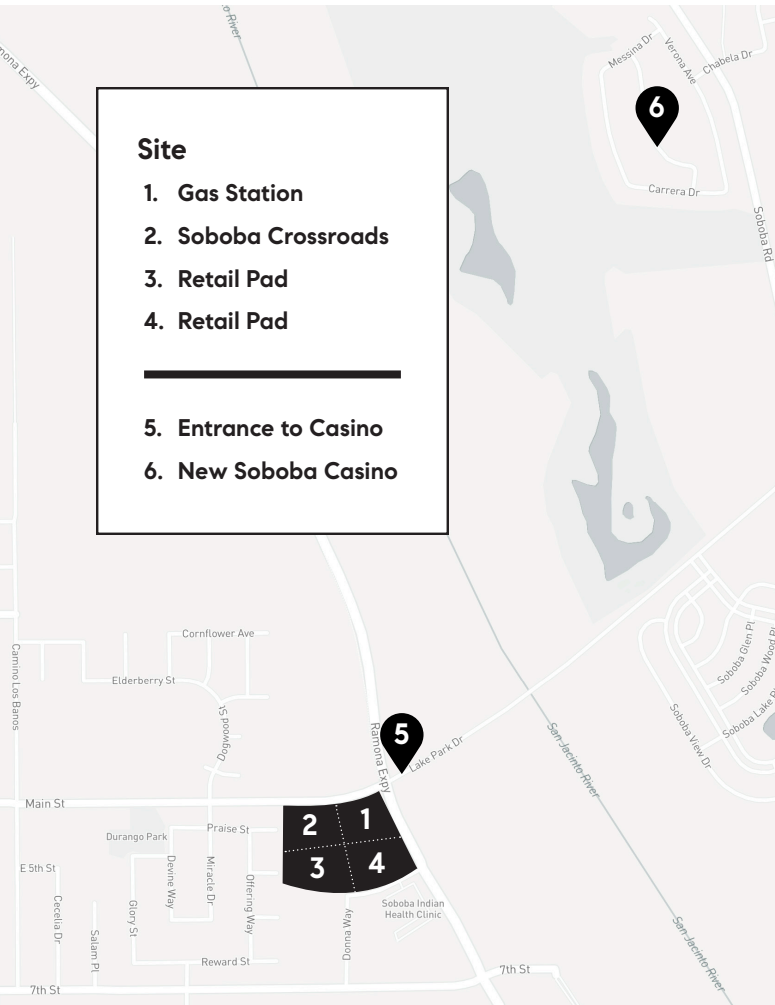
Compass is a licensed real estate broker (01991628) in the State of California and abides by Equal Housing Opportunity laws. All material presented herein is intended for informational purposes only. Compass is a real estate broker licensed by the State of California and abides by Equal Housing Opportunity laws. License Number 01991628. All material presented herein is intended for informational purposes only and is compiled from sources deemed reliable but has not been verified. Changes in price, condition, sale or withdrawal may be made without notice. No statement is made as to accuracy of any description. All measurements and square footages are approximate.

**Site**

1. Gas Station
2. Soboba Crossroads
3. Retail Pad
4. Retail Pad

---

5. Entrance to Casino
6. New Soboba Casino



#### Greg Engel

Agent | Commercial Specialist  
 323.274.2115  
 greg.engel@compass.com  
 DRE 01428024

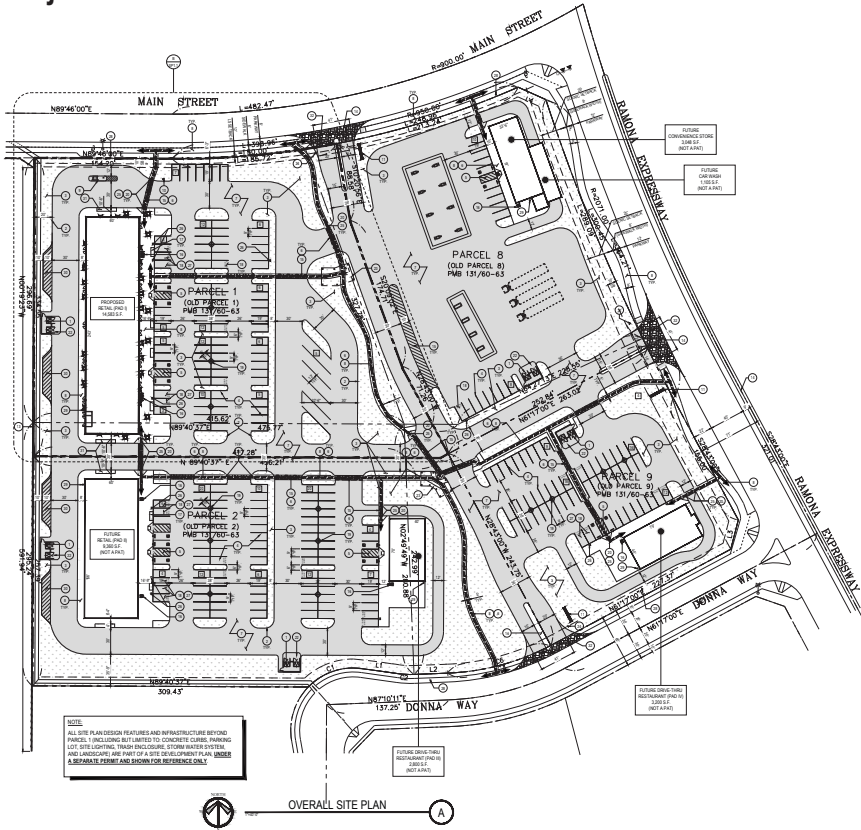


#### Devon Peters

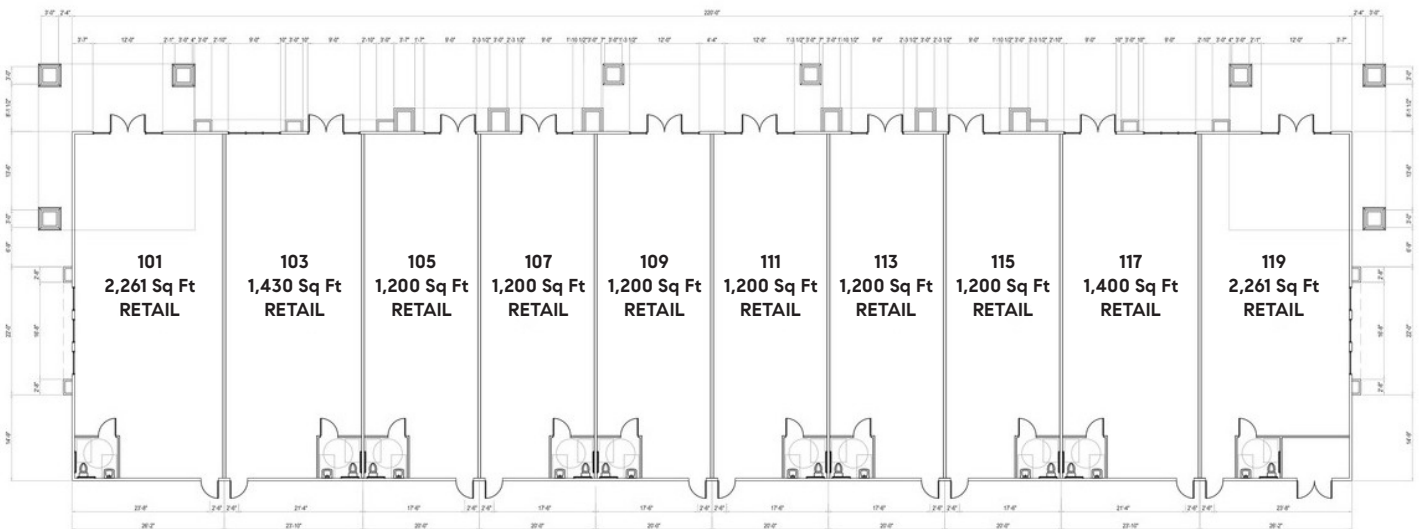
Agent | Commercial Specialist  
 310.728.9339  
 devon.peters@compass.com  
 DRE 01948811



# Project Site Plan



# Preliminary Floor Plan



Compass is a licensed real estate broker (01991628) in the State of California and abides by Equal Housing Opportunity laws. All material presented herein is intended for informational purposes only. Compass is a real estate broker licensed by the State of California and abides by Equal Housing Opportunity laws. License Number 01991628. All material presented herein is intended for informational purposes only and is compiled from sources deemed reliable but has not been verified. Changes in price, condition, sale or withdrawal may be made without notice. No statement is made as to accuracy of any description. All measurements and square footages are approximate.