

# OFFICE / FLEX SPACE FOR LEASE

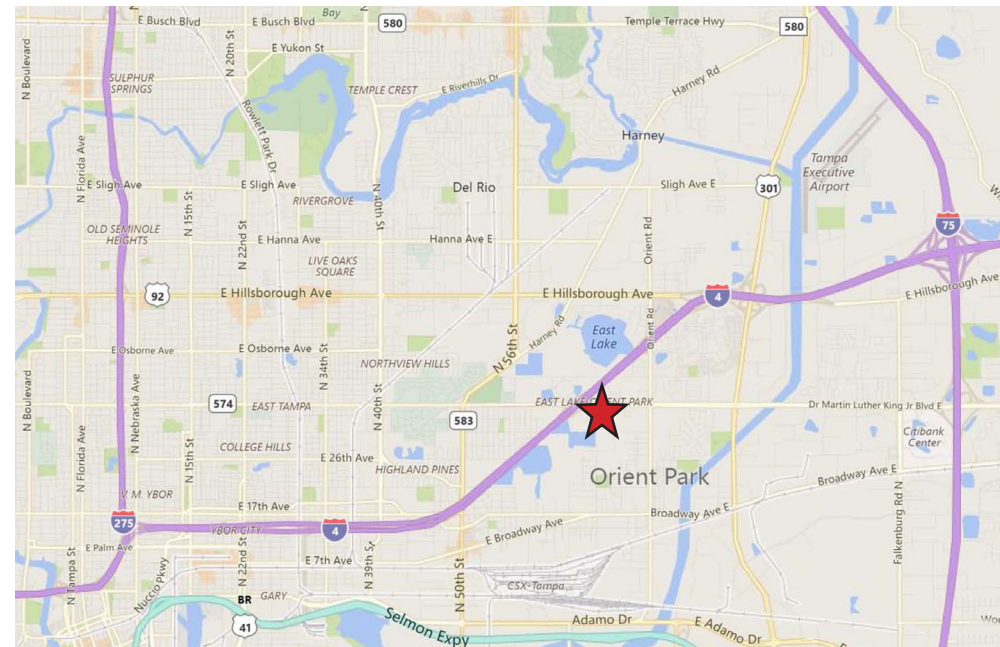
## BRANDYWINE BUSINESS CENTER

3801 & 3803 Corporex Park Drive, Tampa, FL 33619



### PROPERTY HIGHLIGHTS

- ONLY OFFICE/FLEX SPACE AVAILABLE: 2,779 SF
- East Side Industrial Submarket
- Dock-high loading doors, ramps, & grade-level service doors
- Located in Corporex Park, on the corner of E. Dr. MLK Jr. Blvd & Corporex Park Dr in Tampa, FL
- Garden style suites with private entry & large glass paned windows
- Tenant controlled HVAC, with 24/7 access & Parking Ratio: 3.5/1,000 SF
- 14'-18' ceiling heights with at-grade & dock-high loading
- Excellent location: less than 5 minutes to I-4, I-75, US -41, US-301, SR-60, Dr. MLK Jr Blvd, and Selmon Expressway!
- Competitive rates and terms



FranklinSt.com

**RYAN McCURDY**  
ASSOCIATE

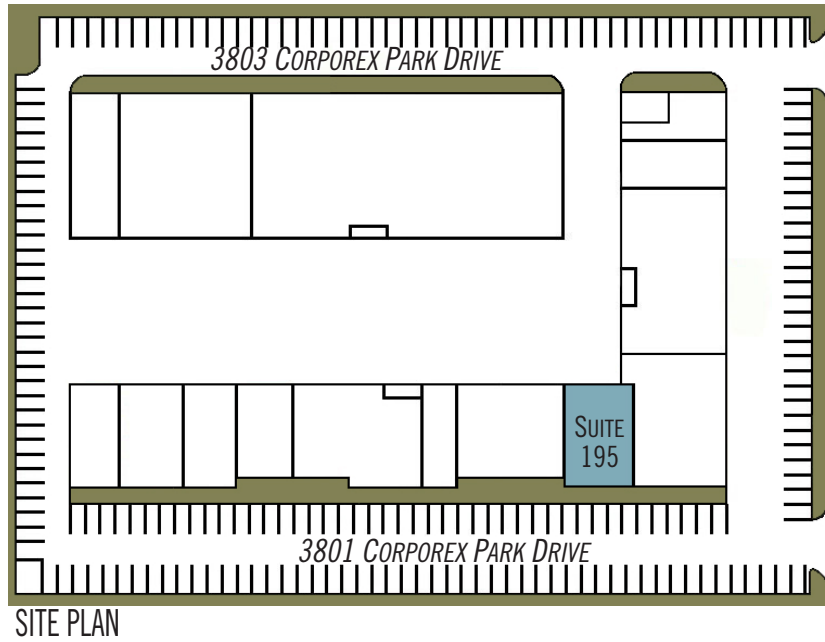
813.559.2011

Ryan.McCurdy@FranklinSt.com

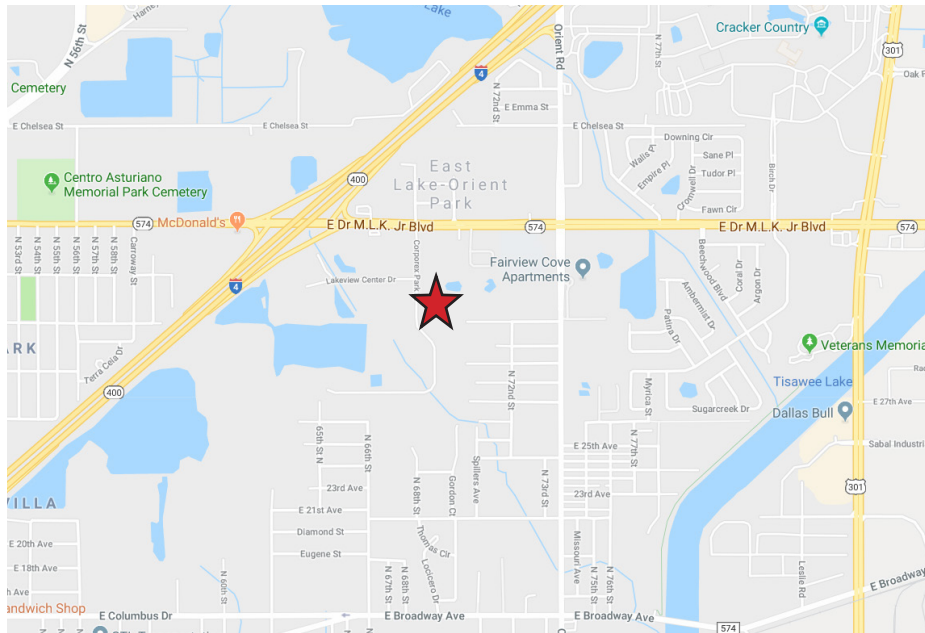
**CLAY WOMMACK**  
SENIOR DIRECTOR

813.345.5886

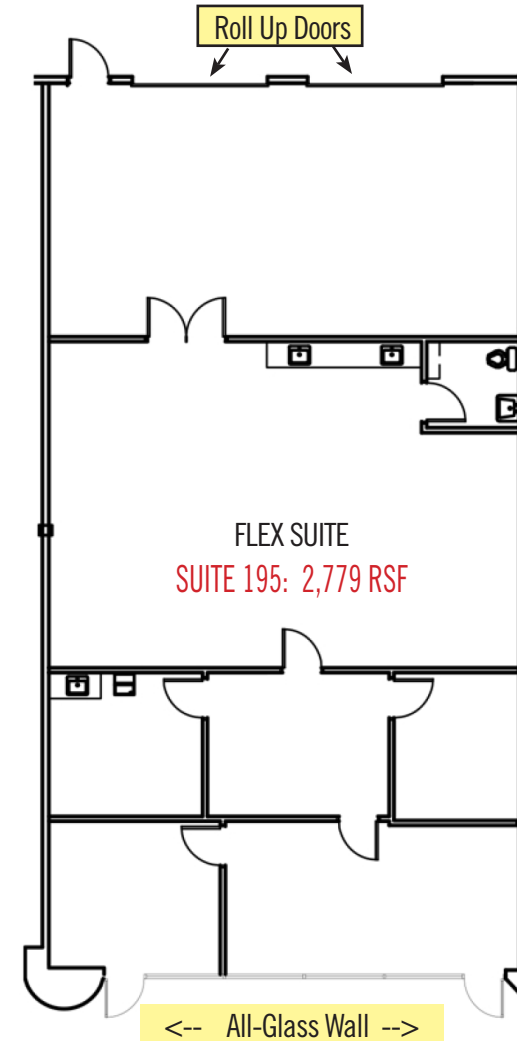
Clay.Wommack@FranklinSt.com



Bldg.	Suite	SF	Type	Features	Available
3801	195	2,779	Office/Flex	2 Roll Up Doors	3/1/2019



**MAP**



**PLANS NOT TO SCALE**

No warranty of representation, expressed or implied, is made to the accuracy of information contained herein, and same is submitted subject to errors, change of price, rental or other conditions, withdrawal without notice, and to any special listing conditions imposed by our principals. H2918