

Medical Space Available for Lease



▶ *Cotswold MOB*

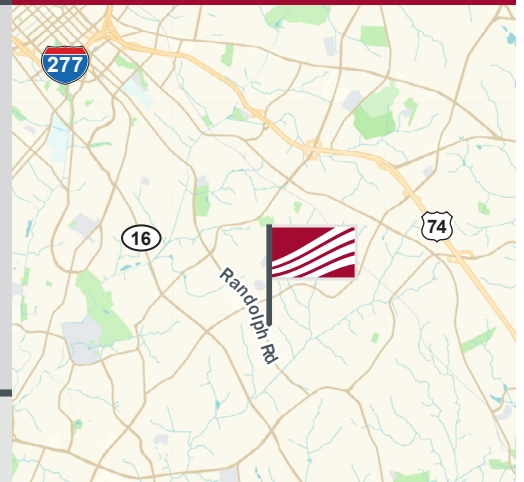
4741 Randolph Rd, Charlotte, NC 28211



+ Medical Space Available

- Expected building completion: 4th Quarter 2019
- Great South Charlotte location
- Total building square footage: 28,000 SF
- Available space square footage:
 - Suite 200B: ±3,558 SF
- Excellent exposure in Cotswold market
- Signage opportunity available

For Lease



Pricing

\$28.50 per SF NNN

Demographics	1 mile	3 mile	5 mile
2018 Population	9,088	94,106	290,021
2000 - 2018 Growth Rate	.88%	1.39%	1.85%
2018 Avg. HH Income	\$130,219	\$120,139	\$97,439

▶ Contact

Mark Newell
704.561.5243
mnewell@mpvre.com

► Site Aerial

Cotswold MOB
4741 Randolph Rd, Charlotte, NC 28211



This GIS data is deemed reliable but provided "as is" without warranty of any representation of accuracy, timeliness, reliability or completeness. This map document does not represent a legal survey of the land and is for graphical purposes only. Use of this data for any purpose should be of acknowledgment of the limitations of the data, including the fact that the data is dynamic and is in a constant state of maintenance, correction, and update.

Market Aerial

Cotswold MOB
4741 Randolph Rd, Charlotte, NC 28211



This GIS data is deemed reliable but provided "as is" without warranty of any representation of accuracy, timeliness, reliability or completeness. This map document does not represent a legal survey of the land and is for graphical purposes only. Use of this data for any purpose should be of acknowledgment of the limitations of the data, including the fact that the data is dynamic and is in a constant state of maintenance, correction, and update.

▶ Renderings

Cotswold MOB
4741 Randolph Rd, Charlotte, NC 28211



Randolph Road Elevation



Randolph Road Elevation Detail



View from Entry Drive

▶ Renderings

Cotswold MOB
4741 Randolph Rd, Charlotte, NC 28211



Hodgson Road Elevation



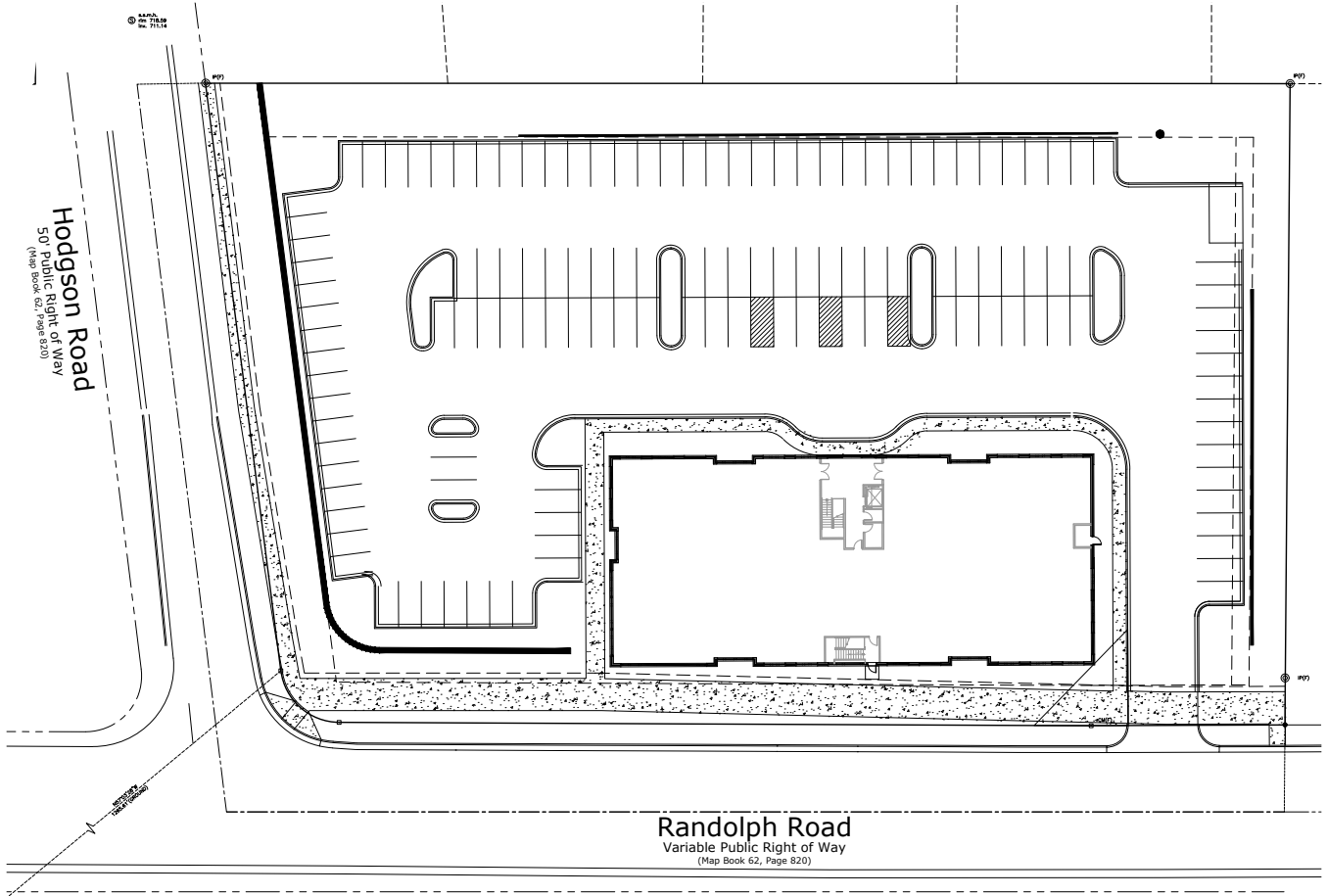
View from Randolph Road



Entry Elevation

► Site Plan

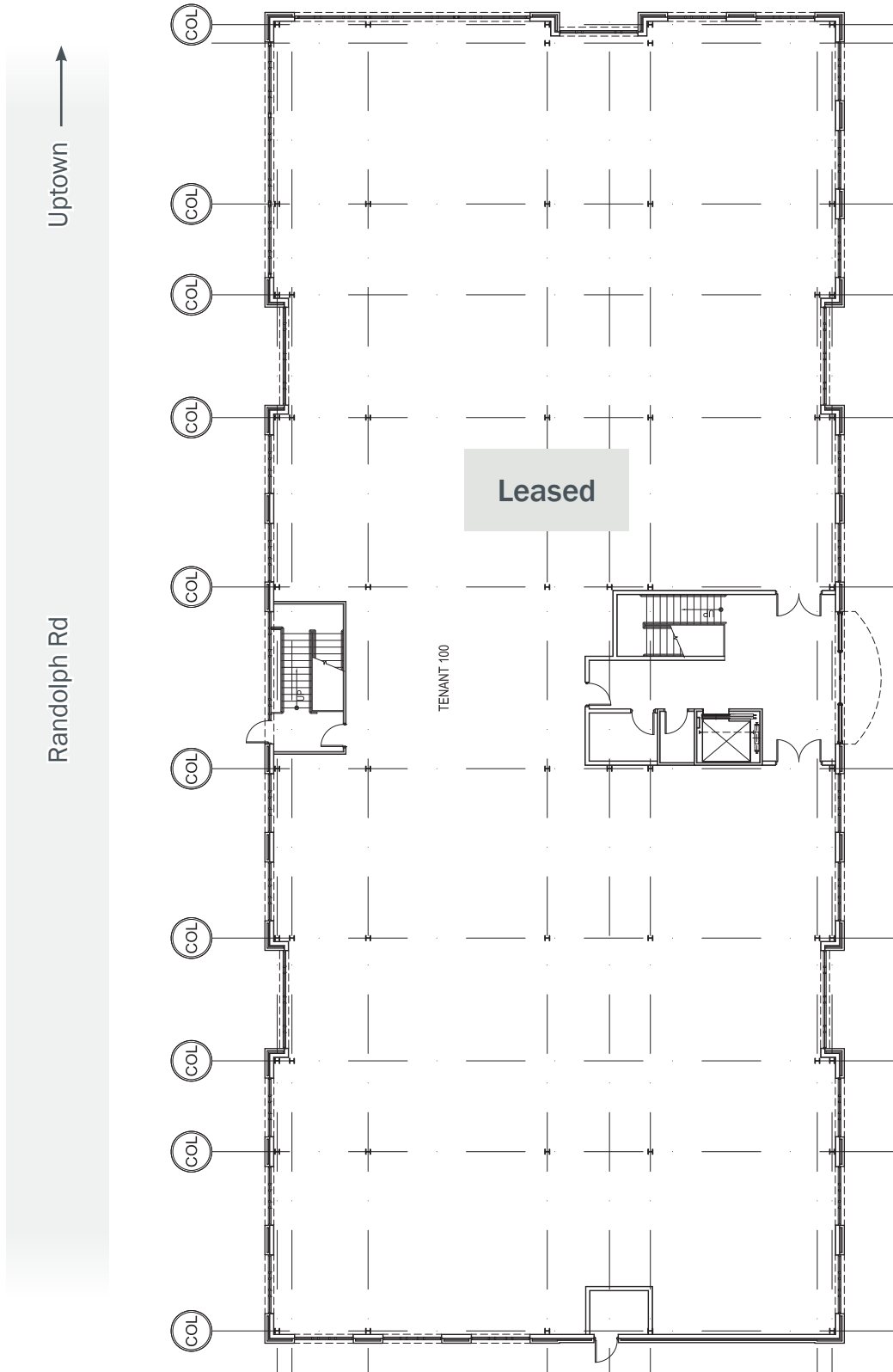
Cotswold MOB
4741 Randolph Rd, Charlotte, NC 28211



► Floor Plan

Cotswold MOB
4741 Randolph Rd, Charlotte, NC 28211

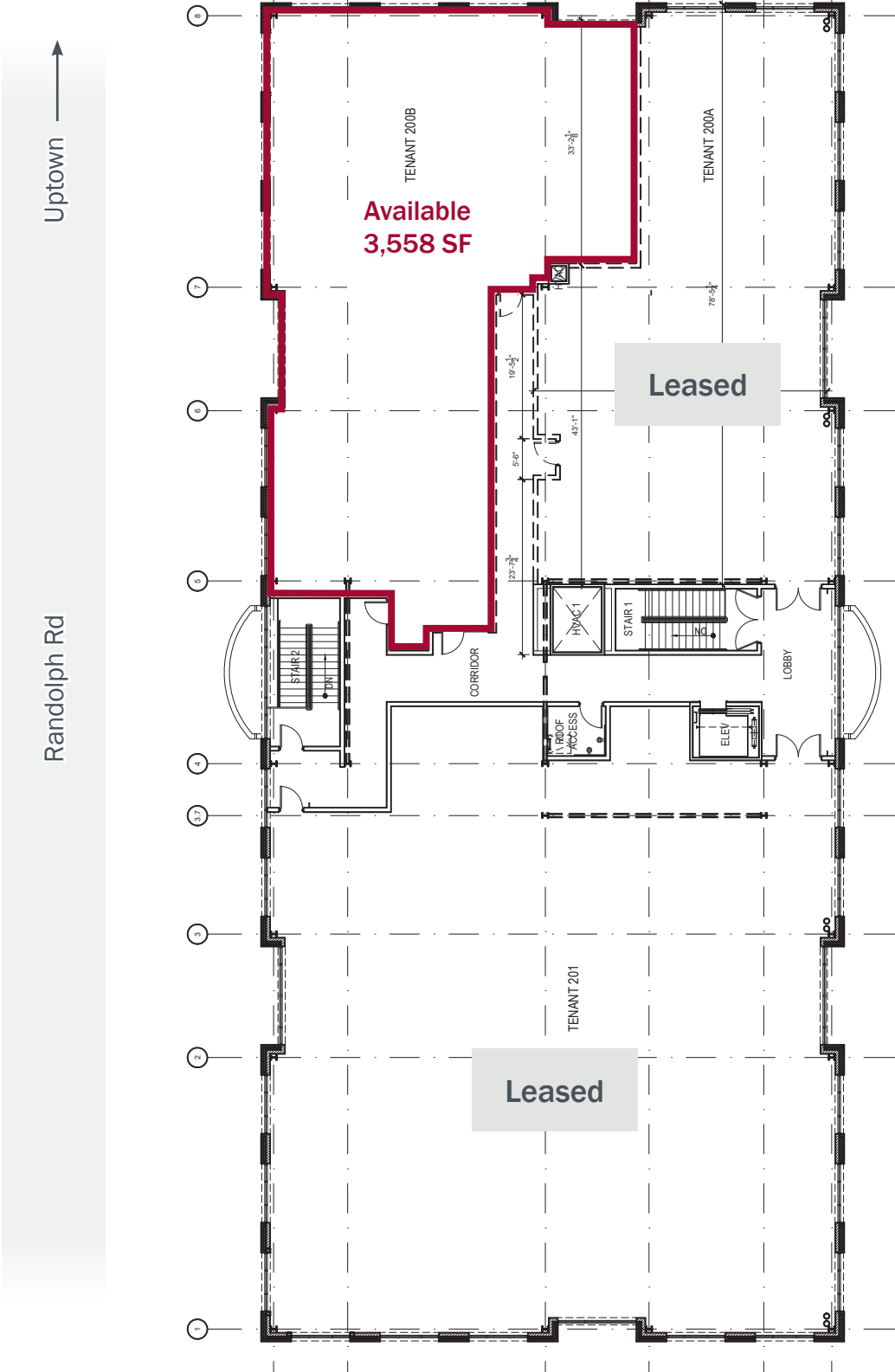
Ground Floor



Floor Plan

Cotswold MOB
4741 Randolph Rd, Charlotte, NC 28211

Second Floor



For complete property listings, visit www.mpvre.com.



2400 South Boulevard, Suite 300 Charlotte, NC 28203 mpvre.com