



AVAILABLE TO LET

66 South Lambeth Road

66 South Lambeth Road, Vauxhall, London, UK SW8 1RL

CLUTTONS

Office for rent, 2,314 sq ft, £32.50 psf (quoting)

To request a viewing call us on 020 7408 1010

For more information visit <https://realla.co/m/36237-66-south-lambeth-road-66-south-lambeth-road>

Henry Brewster
henry.brewster@cluttons.com

Tom Roberts
tom.roberts@cluttons.com

66 South Lambeth Road

66 South Lambeth Road, Vauxhall, London, UK SW8 1RL

To request a viewing call us on 020 7408 1010

CLUTTONS

Fully fitted economical fitted offices to let in Vauxhall

Economical office space to let within a 5 minute walk of Vauxhall Underground Station.

Highlights

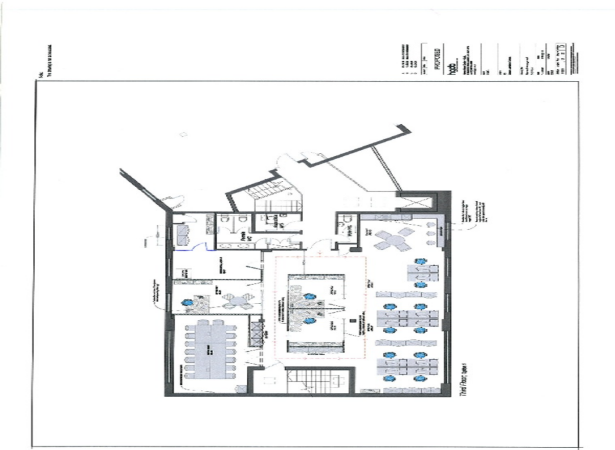
- Fitted office space
- Open plan offices with 3 meeting rooms
- VRV Air conditioning
- DDA Lift
- Commissionaire
- 2 car parking spaces

Property details

Rent	£32.50 psf (Quoting)
Est. S/C	£8.75 psf
Est. rates payable	£12.00 psf
Building type	Office
Planning class	B1
Secondary classes	B1
Available from	01/10/2018
Size	2,314 Sq ft
Lease details	A sub lease until August 2022.
EPC category	E

Unit	Floor	Size sq ft	Rent psf	Service charge psf	Rates psf	Total pa	Planning usage	Status	From
1	Third	2,314	£32.50	£8.75	£12.00	£123,220.50	B1	Available	30/09/2018

* All sizes NIA



More information

Visit microsite

<https://realla.co/m/36237-66-south-lambeth-road-66-south-lambeth-road>

Contact us

Cluttons (London)
Portman House, 2 Portman Street, London W1H 6DU

www.cluttons.com

020 7408 1010

info@cluttons.com

linkedin.com/company/30569/

@Cluttons

facebook.com/Cluttons

Henry Brewster

Cluttons

020 3884 0369

henry.brewster@cluttons.com

Tom Roberts

Cluttons

020 7647 7020

tom.roberts@cluttons.com

Quote reference: RENT-36237

24/04/2019 Cluttons LLP for itself and as agent for the vendor or lessor (as appropriate) gives notice that the particulars are a general outline only for the guidance of intending purchasers or lessees and do not constitute in whole or in part an offer or a contract. Reasonable endeavours have been made to ensure that the information provided is correct however all descriptions and any other details are given without responsibility and any intending purchasers or lessees should not rely on them as statements or representations of fact but must satisfy themselves by inspection or otherwise as to the correctness of them. Neither Cluttons LLP, its partners or employees has any authority to make or give any representation or warranty whatever in relation to this property. Nothing in these particulars shall be deemed to be a statement that the property is in good repair or condition or otherwise nor that any services or facilities are in good working order. Photographs may show only certain parts and aspects of the property at the time when the photographs were taken and you should rely upon actual inspection. No assumption should be made in respect of parts of the property not shown in photographs. Any areas, measurements or distances are only approximate. Any reference to alterations or use is not intended to be a statement that any necessary planning, building regulation, listed building or any other consent has been obtained.