

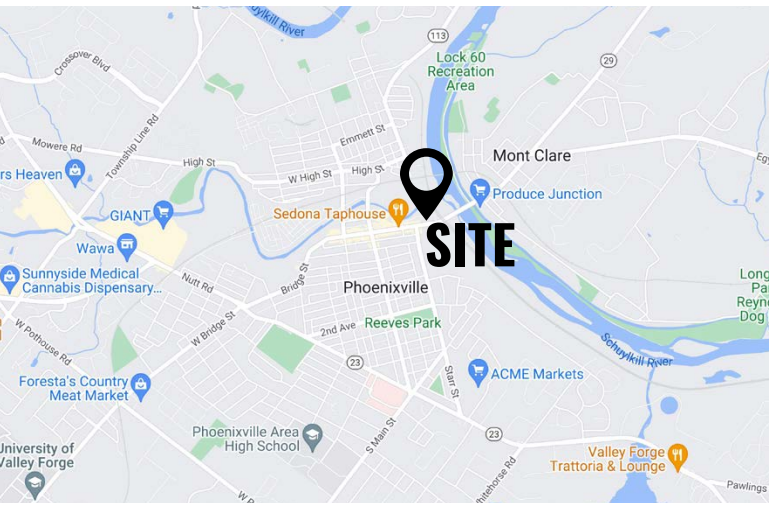
FULLY EQUIPPED RESTAURANT & BAR

37 Bridge Street | Phoenixville, PA 19460 | Chester County

FOR LEASE
\$6,000 Per Month

PROPERTY FEATURES / HIGHLIGHTS

- ✓ ±3,000 SF Restaurant & Bar Available For Lease
- ✓ Large Outdoor Patio
- ✓ All Furniture Fixtures and Equipment Included
- ✓ Near Large Municipal Parking Lot



DEMOGRAPHICS	1 MILE	3 MILE	5 MILE
TOTAL POPULATION	14,615	46,938	106,964
AVERAGE HHI	\$90,941	\$134,404	\$135,650
TOTAL HOUSEHOLDS	6,312	18,733	41,258

CONTACT US

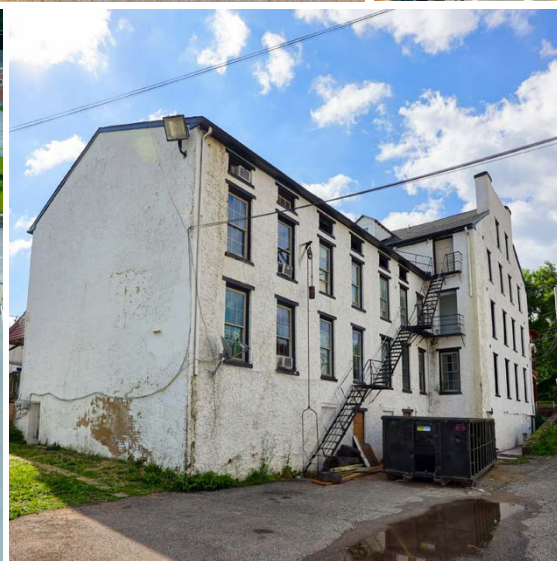
JAMES PINCKNEY
Phone: 610.359.1100
Cell: 610.453.2569
Email: jpinckney@zmcre.com

MARK TRANI
Phone: 610.359.1100
Cell: 302.383.5156
Email: m.trani@zmcre.com

1306 Wilmington Pike, Suite A-2
West Chester, PA 19382
610.359.1100
www.zmcre.com


ZOMMICK MCMAHON
COMMERCIAL REAL ESTATE

PROPERTY PHOTOS: 37 BRIDGE STREET | PHOENIXVILLE, PA 19460



CONTACT US


ZOMMICK MCMAHON
COMMERCIAL REAL ESTATE

JAMES PINCKNEY
Phone: 610.359.1100
Cell: 610.453.2569
Email: jpinckney@zmcre.com

MARK TRANI
Phone: 610.359.1100
Cell: 302.383.5156
Email: m.trani@zmcre.com

1306 Wilmington Pike, Suite A-2
West Chester, PA 19382
610.359.1100
www.zmcre.com

PROPERTY PHOTOS: 37 BRIDGE STREET | PHOENIXVILLE, PA 19460




ZOMMICK MCMAHON
COMMERCIAL REAL ESTATE

CONTACT US

JAMES PINCKNEY
Phone: 610.359.1100
Cell: 610.453.2569
Email: jpinckney@zmcre.com

MARK TRANI
Phone: 610.359.1100
Cell: 302.383.5156
Email: m.trani@zmcre.com

1306 Wilmington Pike, Suite A-2
West Chester, PA 19382
610.359.1100
www.zmcre.com

PROPERTY PHOTOS: 37 BRIDGE STREET | PHOENIXVILLE, PA 19460




ZOMMICK MCMAHON
COMMERCIAL REAL ESTATE

CONTACT US

JAMES PINCKNEY
Phone: 610.359.1100
Cell: 610.453.2569
Email: jpinckney@zmcre.com

MARK TRANI
Phone: 610.359.1100
Cell: 302.383.5156
Email: m.trani@zmcre.com

1306 Wilmington Pike, Suite A-2
West Chester, PA 19382
610.359.1100
www.zmcre.com

DRONE LOCATION OVERVIEW: 37 BRIDGE STREET | PHOENIXVILLE, PA 19460



SITE

Starr Street

Bridge Street

29

Ashland Street

Municipal Parking Lot

CONTACT US

ZOMMICK MCMAHON
COMMERCIAL REAL ESTATE

JAMES PINCKNEY
Phone: 610.359.1100
Cell: 610.453.2569
Email: jpinckney@zmcre.com

MARK TRANI
Phone: 610.359.1100
Cell: 302.383.5156
Email: m.trani@zmcre.com

1306 Wilmington Pike, Suite A-2
West Chester, PA 19382
610.359.1100
www.zmcre.com

ABOUT ZOMMICK McMAHON COMMERCIAL REAL ESTATE

Zommick McMahon Commercial Real Estate, Inc. has been a Metro Philadelphia Area staple since its inception in 1949. The Company was founded by Joseph Zommick, and continues today with Ryan McMahon and his highly experienced staff, whom are all results-oriented professionals.

SOME OF OUR SATISFIED CLIENTS:



IRON HILL
BREWERY & RESTAURANT



CONTACT US

JAMES PINCKNEY
Phone: 610.359.1100
Cell: 610.453.2569
Email: jpinckney@zmcre.com

MARK TRANI
Phone: 610.359.1100
Cell: 302.383.5156
Email: m.trani@zmcre.com

1306 Wilmington Pike, Suite A-2
West Chester, PA 19382
610.359.1100
www.zmcre.com