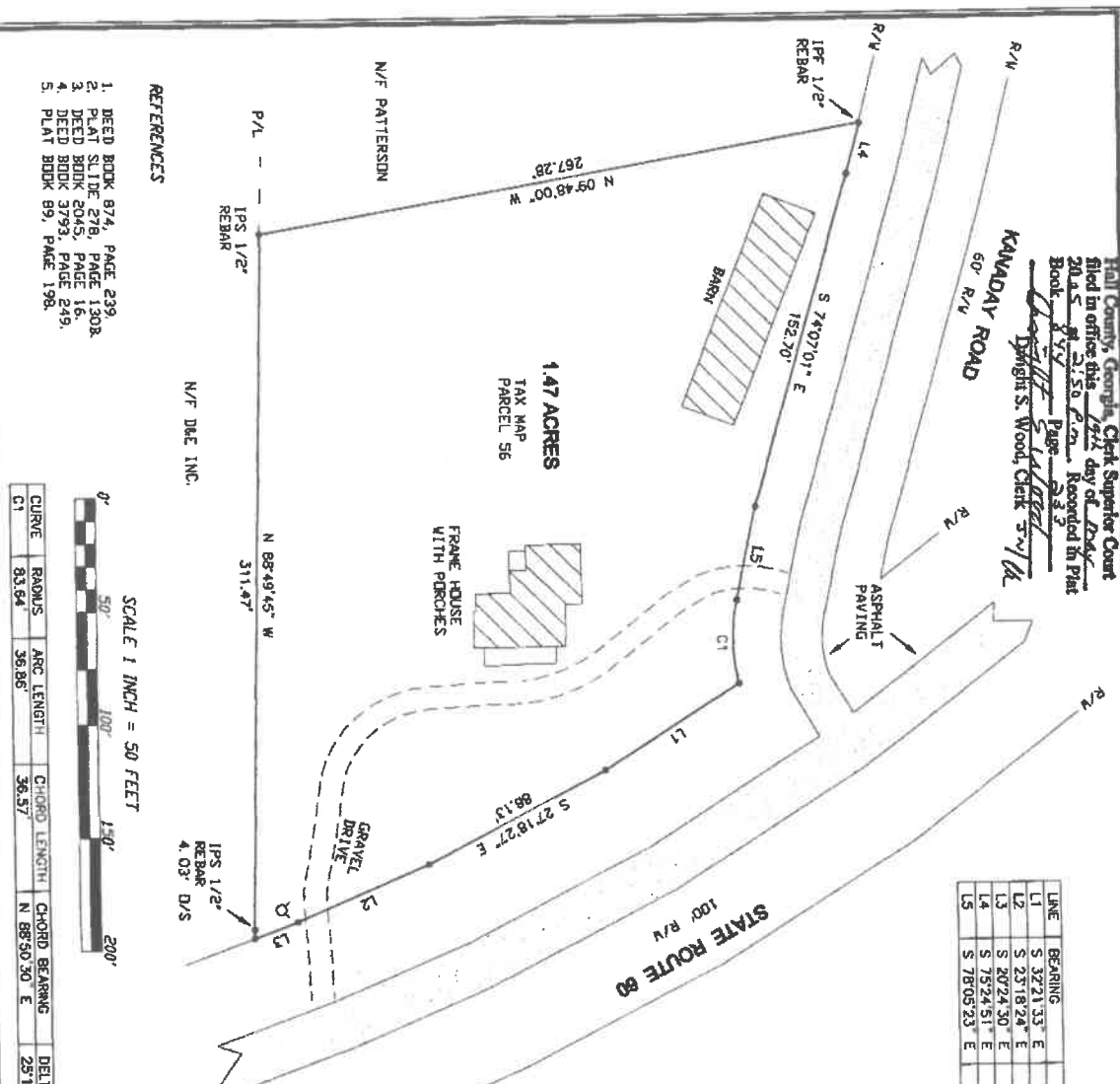
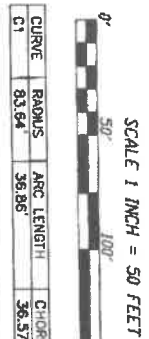


Hall County, Georgia, Clerk Superior Court
 filed in office this 12th day of May
 2015 at 2:50 P.M. Recorded in Plat
 Book 257 Page 233
 Dwight S. Wood, Clerk S.W.

LINE	BEARING	DISTANCE
L1	S 32°21'33" E	70.24
L2	S 23°18'24" E	62.30
L3	S 20°24'30" E	20.42
L4	S 75°24'51" E	23.04
L5	S 78°05'23" E	42.21



- REFERENCES
1. DEED BOOK 874, PAGE 239
 2. DEED BOOK 876, PAGE 1308
 3. DEED BOOK 3045, PAGE 16
 4. DEED BOOK 3793, PAGE 249
 5. PLAT BOOK 89, PAGE 198.



- LEGEND
- B/F = BARBED WIRE FENCE
 - D/F = DRAIN FENCE
 - CA = CENTERLINE
 - CN = CONCRETE MONUMENT
 - C/P = GRUNDED TOP PIPE
 - IPF = IRON PIN FOUND
 - LL = LAND LOT
 - LI = LAND LOT LINE
 - LP = LIGHT POLE
 - LP = NOV OR FORMERLY
 - D/S = OFFSET
 - OT = OPEN TOP PIPE
 - PP = POWER BOX
 - P/L = PROPERTY LINE
 - PP = POWER POLE
 - RB = REBAR
 - RAV = RIGHT OF WAY
 - U/P = UTILITY POLE

NOTES

A PENTAX PCS 215 TOTAL STATION AND A TRIPED DATA SYSTEMS FIELD COMPUTER WERE USED TO OBTAIN THE LINEAR AND ANGULAR MEASUREMENTS USED IN THE PREPARATION OF THIS PLAT.

THE FIELD DATA UPON WHICH THIS PLAT IS BASED HAS A CLOSURE PRECISION OF ONE FOOT IN 65 PER ANGLE POINT AND WAS ADJUSTED USING THE COMMISS. RULE. THIS PLAT HAS BEEN CALCULATED FOR CLOSURE AND IS FOUND TO BE ACCLARATE WITHIN ONE FOOT IN 2000 FEET.

THIS PROPERTY IS SUBJECT TO ANY EASEMENTS, RESERVATIONS OR RESTRICTIONS BOTH WRITTEN OR UNWRITTEN.

IN MY OPINION THIS PLAT IS A CORRECT REPRESENTATION OF THE LAND PLATTED AND HAS BEEN PREPARED IN CONFORMITY WITH THE MINIMUM STANDARDS AND REQUIREMENTS OF THE LAW.



RECORDING PERMIT

By *Dwight S. Wood* 515-198
 HALL COUNTY PLANNING COMMISSION



DATE SIGNED: 1-13-05

THIS PLAT IS A VALID ORIGINAL ONLY IF THERE IS BLACK INK SIGNATURE OVER THE BLUE SEAL

PLAT OF BOUNDARY SURVEY FOR

DAVID & ELAINE BLACK

LAND LOT 88, 11TH DISTRICT
 HALL COUNTY, GEORGIA

PLAT PREPARED BY

CLEVELAND LAND SERVICES, INC.

SURVEYING - MAPPING - PLANNING

566 SAUTEE WOODS TRAIL
 SAUTEE - NACDODCHEE, GEORGIA 30571
 OFFICE (706)878-9045 FAX (706)878-9045
 Website http://cleveland.com

DRAWING # B051-1
 DRAWING NAME: BLACK-E
 CRD NAME: BLACK-E
 TERMINAL B, T# 300

FIELD DATE: 1-12-05
 DRWG DATE: 1-13-05

JEROME P. SANDERS
 GA. R.P.L.S. # 2873