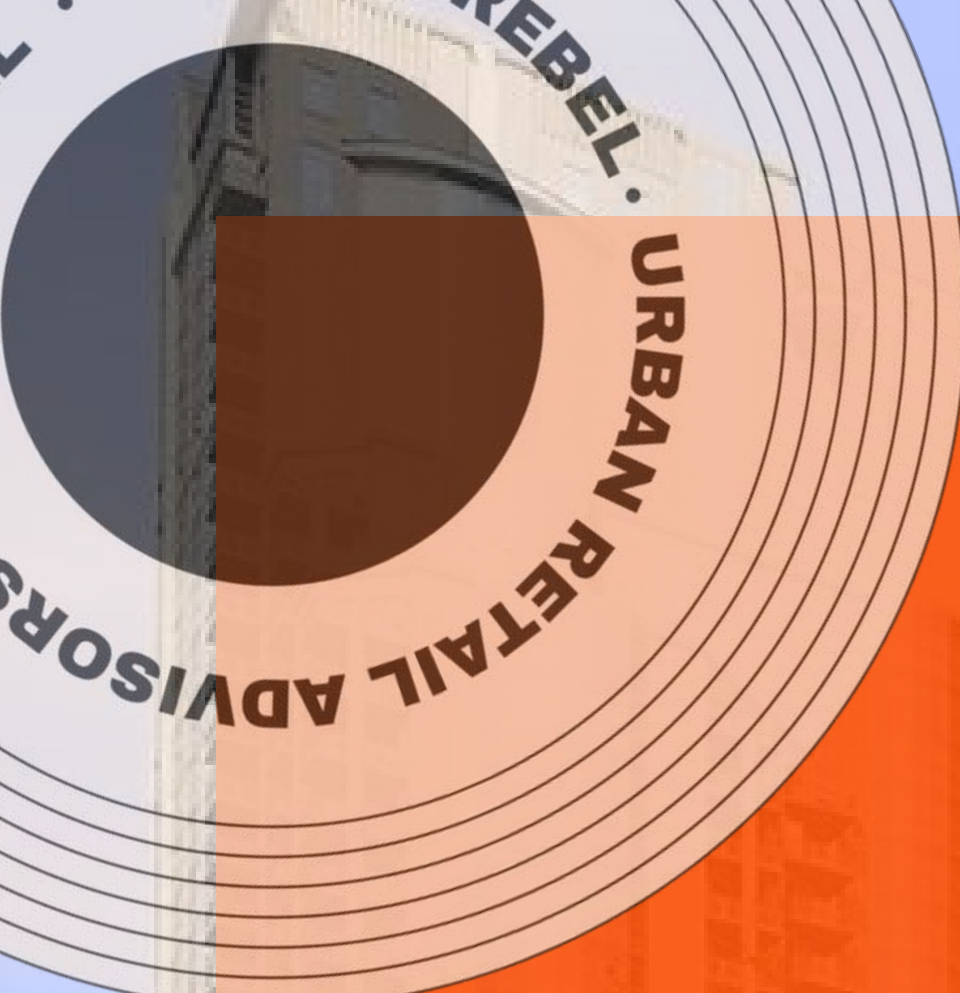




# CARILLON

# 227 W TRADE

SECOND GENERATION RESTAURANT FOR LEASE



# SPACE AVAILABILITY

+ / - 8,855 SF RESTAURANT + BAR

Rare second generation opportunity  
in the heart of Uptown Charlotte's most dynamic dining corridor.

---

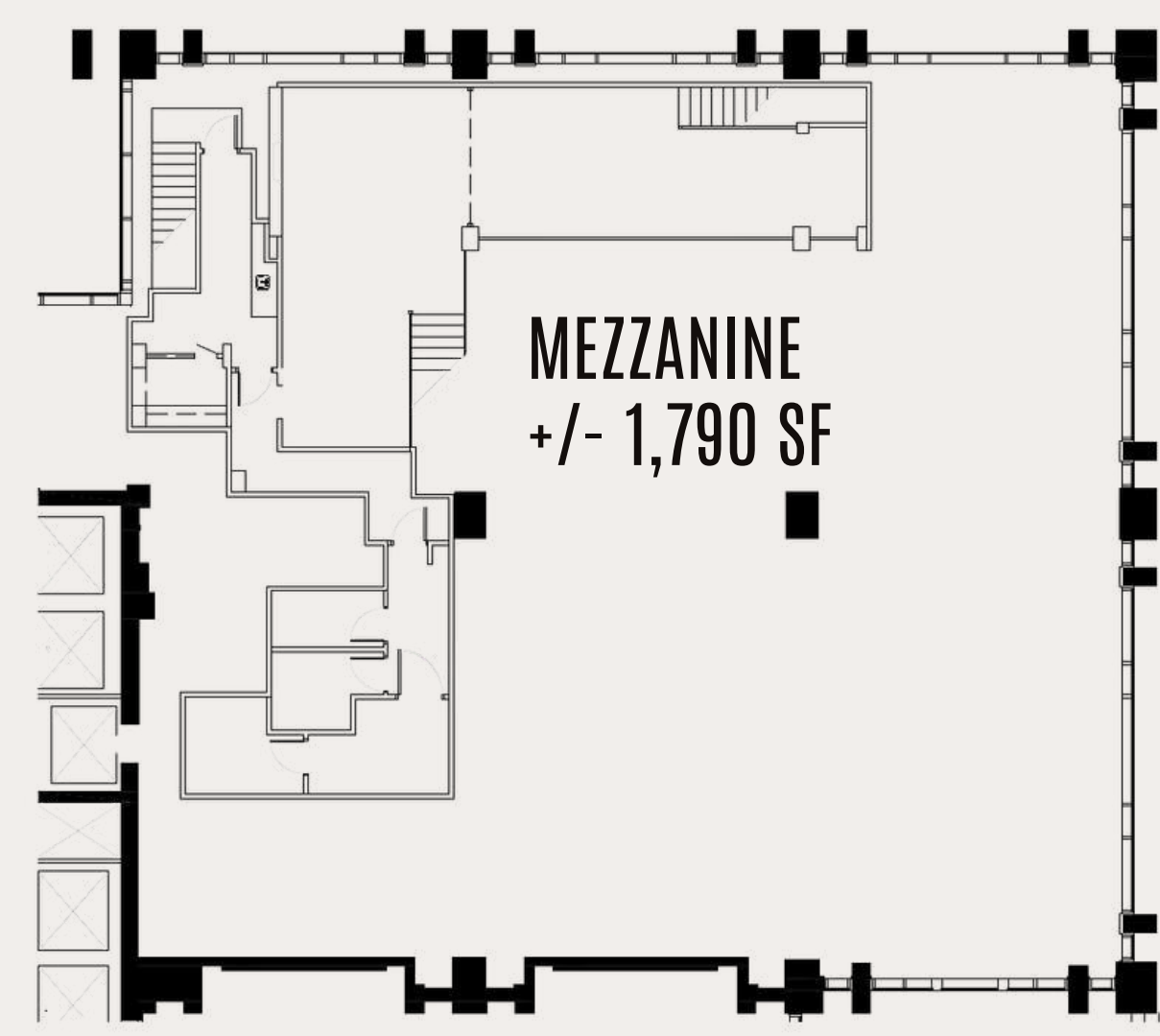
[REBELREBELCRE.COM](http://REBELREBELCRE.COM)

REBELREBELCRE.COM

# SECOND GENERATION RESTAURANT

- +/- 8,855 SF across two floors
- Unique storefront on Trade Street
- Second generation restaurant
- Situated steps from Tryon St
- Nearby co-tenants include Capital Grille, The Ivey's Hotel, Basil, Cowbell Burger & Whiskey Bar, Church & Union, Belk Theatre, and Sophia's Lounge





# LAYOUT

**STREET-LEVEL RETAIL: +/- 7,065 SF**  
**MEZZANINE: +/- 1,790 SF**



# UPTOWN CHARLOTTE

#7 FASTEST GROWING  
METRO

REBEL  
REBEL

REBELREBELCRE.COM



# UPTOWN CHARLOTTE

#7 fastest growing metro in USA

- 33 MM SF office space
- 120,000 employees
- 1,240 companies
- 15,500 estimated residents
- 232 restaurants/clubs
- 8 Fortune 500 headquarters
- 518 K existing retail SF
- 6,528 existing hotel rooms
- 24,800 existing residential units
- 5.5 MM SF office planned
- 437 K SF retail planned
- 276,119 5-mile population
- Average Income: \$145,376 (3-mile)



# LET'S CONNECT

ADAM WILLIAMS  
PRINCIPAL  
ADAM@REBELREBELCRE.COM  
980-722-1536