

FOR SALE

2690 Kirby Circle NE, Palm Bay, FL



Property: 16.16± acres
Zoning: Light Industrial (L1), City of Palm Bay
Utilities: City of Palm Bay water and sewer
Sale Price: \$595,000 m (\$0.85 per SF)
Amenities: Partial building pads in place
On-site retention
688± FT frontage on Kirby Circle
297± FT frontage on Taylor Avenue

**Property site plan approval in 2006 for 7 buildings,
150,000+ SF flex industrial development**

*The information provided is subject to change without notice.
The Ullian Realty Corporation assumes no responsibility for any errors, omissions, or changes.*

KIRBY INDUSTRIAL PARK

The **ULLIAN REALTY** Corporation

Adam Rathbun, CCIM
321-729-9900 x 20
Cell 321-266-9200

Adam@UllianRealty.com
1800 Penn Street, Suite 11
Melbourne, FL 32901

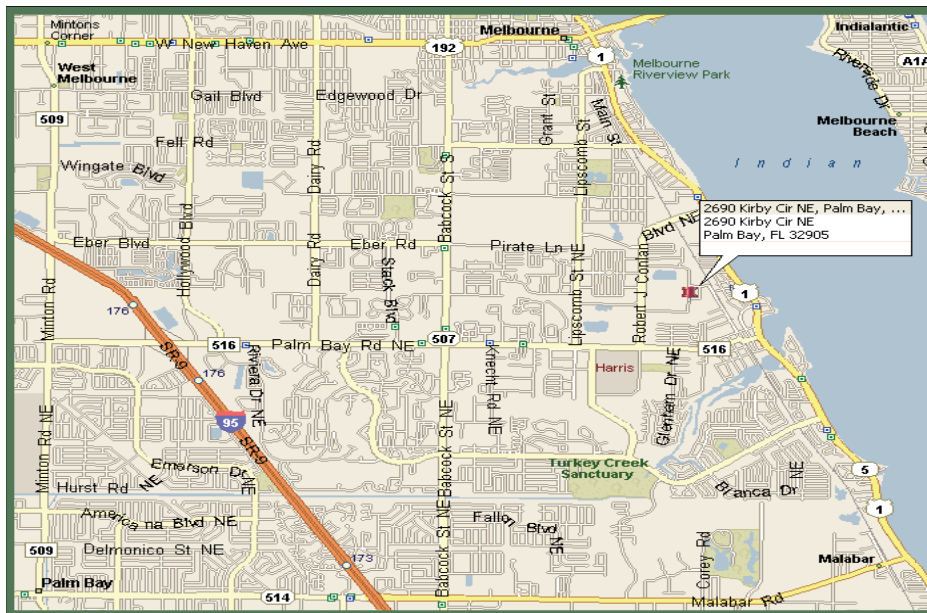
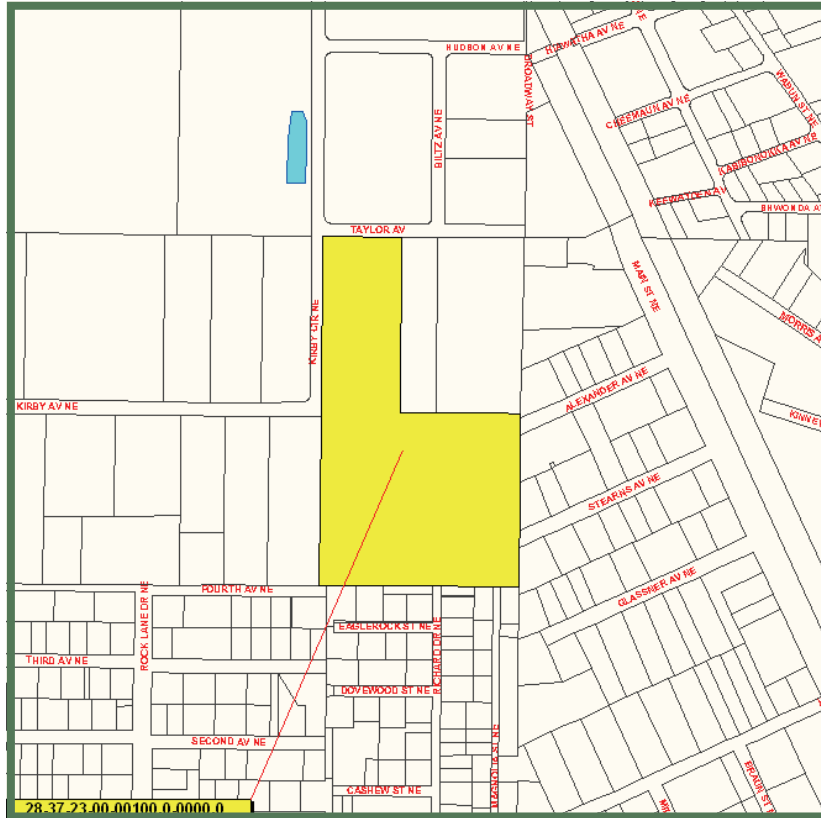
Adam Rathbun, CCIM
Office 321-729-9900 x 20
Cell 321-266-9200

The **ULLIAN REALTY** Corporation

1800 Penn Street, Ste. 11
Melbourne, FL 32901

Adam@UllianRealty.com

2690 Kirby Circle NE, Palm Bay, FL



The information above has been obtained from sources believed reliable. While we do not doubt its accuracy, we have not verified it and make no guarantee, warranty or representation about it. It is your responsibility to independently confirm its accuracy and completeness. Any projections, opinions, assumptions or estimates used are for example only and do not represent the current or future performance of the property. The value of this transaction to you depends on tax and other factors that should be evaluated by your tax, financial and legal advisors. You and your advisors should conduct a careful, independent investigation of the property to determine to your satisfaction the suitability of the property for your needs. The information provided is subject to change without notice. The Ullian Realty Corporation assumes no responsibility for any errors, omissions, or changes.