

# SUNRISE PLAZA

36-84 EAST SUNRISE HIGHWAY, LINDENHURST, NY 11757



CONTACT EXCLUSIVE BROKERS FOR DETAILS:

**EDWARD GOTTLIEB, CRX, CLS**

Associate Real Estate Broker

ed@schuckmanrealty.com

**JESSICA VILMENAY**

Associate Real Estate Broker

jessica@schuckmanrealty.com

12 E. 49TH STREET, SUITE 10-107 / NEW YORK, NY 10017  
1983 MARCUS AVENUE, SUITE 102 / LAKE SUCCESS, NY 11042

WWW.SCHUCKMANREALTY.COM

P. 516.496.8888

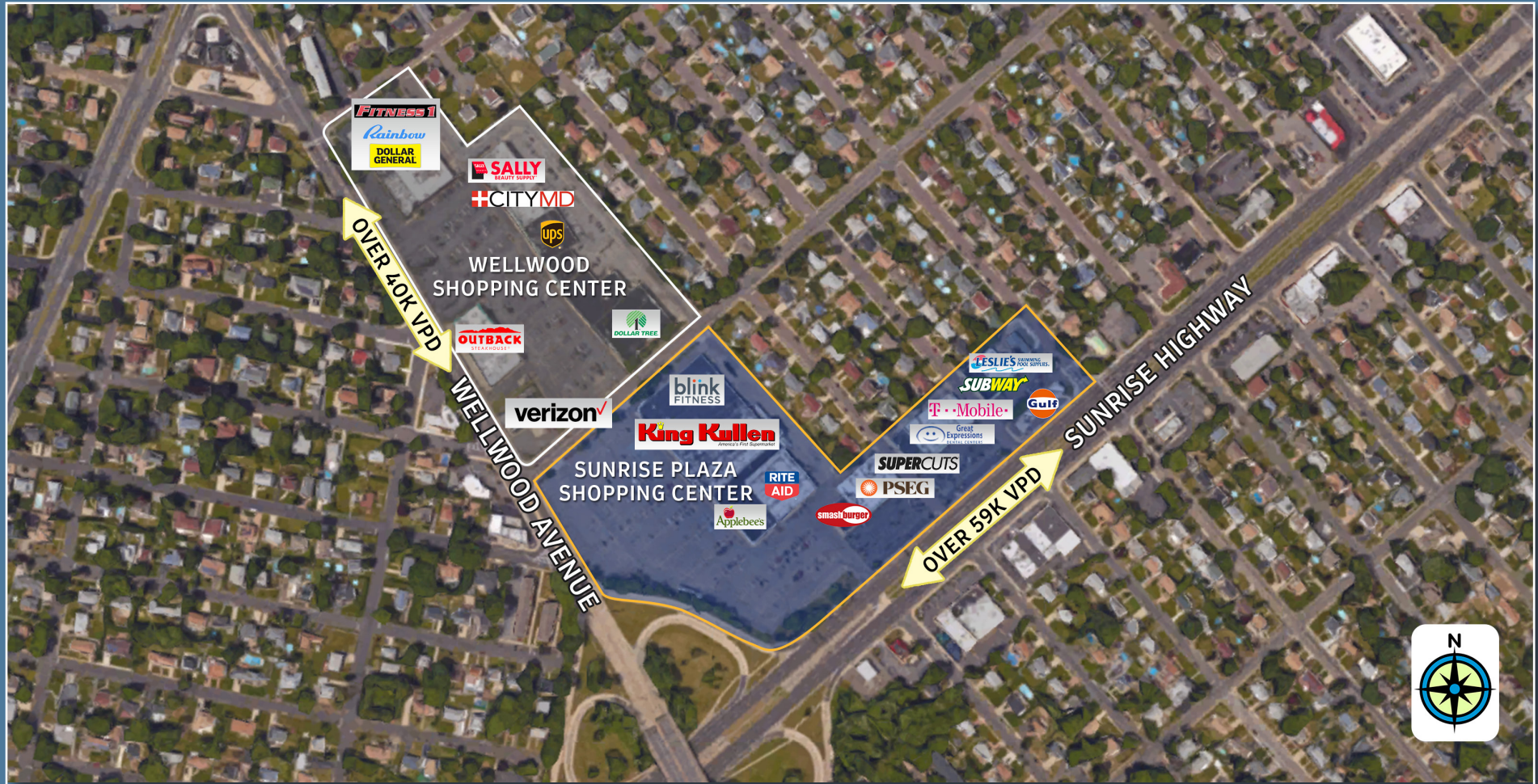
This information contained herein has been obtained from sources believed reliable. However, we have not verified it and make no guarantee, warranty or representation about it. It is submitted subject to the possibility of errors, omissions, change of price, rental and other conditions, prior sale, lease or financing, or withdrawal without notice. It is your responsibility to independently confirm its accuracy and completeness. Any projections, opinions, assumptions, or estimates used are for example only and they may not represent the current or future suitability, availability or performance of the property. You and your tax and legal advisors should conduct your own investigation of any property and transaction. We may or may not have an exclusive or nonexclusive contractual relationship with a tenant or the owner/landlord of a particular property; and if we do, such relationship shall be fully disclosed to you on a timely basis. Third-party trademarks, service marks, graphics, and logos belong to third parties. You are not granted any right or license with respect to Schuckman Realty Inc.'s trademarks service marks, graphics, and logos or the trademarks service marks, graphics, and logos of any third party. Kenneth Schuckman is Broker of record of Schuckman Realty Inc.

**SCHUCKMAN**<sup>®</sup>  
REALTY INC.



# SUNRISE PLAZA

36-84 EAST SUNRISE HIGHWAY, LINDENHURST, NY 11757



CONTACT EXCLUSIVE BROKERS FOR DETAILS:

**EDWARD GOTTLIEB, CRX, CLS**

Associate Real Estate Broker

ed@schuckmanrealty.com

**JESSICA VILMENAY**

Associate Real Estate Broker

jessica@schuckmanrealty.com

12 E. 49TH STREET, SUITE 10-107 / NEW YORK, NY 10017  
1983 MARCUS AVENUE, SUITE 102 / LAKE SUCCESS, NY 11042

WWW.SCHUCKMANREALTY.COM

P. 516.496.8888

This information contained herein has been obtained from sources believed reliable. However, we have not verified it and make no guarantee, warranty or representation about it. It is submitted subject to the possibility of errors, omissions, change of price, rental and other conditions, prior sale, lease or financing, or withdrawal without notice. It is your responsibility to independently confirm its accuracy and completeness. Any projections, opinions, assumptions, or estimates used are for example only and they may not represent the current or future suitability, availability or performance of the property. You and your tax and legal advisors should conduct your own investigation of any property and transaction. We may or may not have an exclusive or nonexclusive contractual relationship with a tenant or the owner/landlord of a particular property; and if we do, such relationship shall be fully disclosed to you on a timely basis. Third-party trademarks, service marks, graphics, and logos belong to third parties. You are not granted any right or license with respect to Schuckman Realty Inc.'s trademarks service marks, graphics, and logos or the trademarks service marks, graphics, and logos of any third party. Kenneth Schuckman is Broker of record of Schuckman Realty Inc.

**SCHUCKMAN**<sup>®</sup>  
REALTY INC.



# SUNRISE PLAZA

36-84 EAST SUNRISE HIGHWAY, LINDENHURST, NY 11757

## PROPERTY INFORMATION

**SPACES AVAILABLE:** 1,550 SF - 4,000SF

**RENT:** UPON REQUEST

**AVAILABILITY:** ARRANGED

**GLA:** 50,000 SF ON SUNRISE HIGHWAY

### COMMENTS:

- STRONG NEIGHBORHOOD CENTER, ONGOING CAPITAL IMPROVEMENT PROGRAM WITH STABLE HANDS-ON OWNERSHIP
- EXCELLENT CO-TENANCY
- STRATEGICALLY LOCATED ON SUNRISE HIGHWAY @ WELLWOOD AVE. WITH OVER 59K VEHICLES PER DAY ON SUNRISE HIGHWAY



### NEIGHBORING RETAIL:

blink  
FITNESS

Applebee's

King Kullen  
America's First Supermarket

DOLLAR TREE

LONG ISLAND  
PHYSICAL THERAPY

Great  
Expressions  
DENTAL CENTERS

SUBWAY

T-Mobile



PSEG

RITE  
AID

Smashburger

Miracle-Ear

### DEMOGRAPHICS

	1 MILE	3 MILE	5 MILE
POPULATION	23,252	81,898	147,553
HOUSEHOLDS	7,558	26,181	48,974
AVG. HOUSEHOLD INCOME	\$104,516	\$100,169	\$102,382

CONTACT EXCLUSIVE BROKERS FOR DETAILS:

**EDWARD GOTTLIEB, CRX, CLS**

Associate Real Estate Broker

ed@schuckmanrealty.com

**JESSICA VILMENAY**

Associate Real Estate Broker

jessica@schuckmanrealty.com

**SCHUCKMAN**  
REALTY INC.

12 E. 49TH STREET, SUITE 10-107 / NEW YORK, NY 10017  
1983 MARCUS AVENUE, SUITE 102 / LAKE SUCCESS, NY 11042

This information contained herein has been obtained from sources believed reliable. However, we have not verified it and make no guarantee, warranty or representation about it. It is submitted subject to the possibility of errors, omissions, change of price, rental and other conditions, prior sale, lease or financing, or withdrawal without notice. It is your responsibility to independently confirm its accuracy and completeness. Any projections, opinions, assumptions, or estimates used are for example only and they may not represent the current or future suitability, availability or performance of the property. You and your tax and legal advisors should conduct your own investigation of any property and transaction. We may or may not have an exclusive or nonexclusive contractual relationship with a tenant or the owner/landlord of a particular property; and if we do, such relationship shall be fully disclosed to you on a timely basis. Third-party trademarks, service marks, graphics, and logos belong to third parties. You are not granted any right or license with respect to Schuckman Realty Inc.'s trademarks service marks, graphics, and logos or the trademarks service marks, graphics, and logos of any third party. Kenneth Schuckman is Broker of record of Schuckman Realty Inc.

WWW.SCHUCKMANREALTY.COM  
P. 516.496.8888



# SUNRISE PLAZA

36-84 EAST SUNRISE HIGHWAY, LINDENHURST, NY 11757



CONTACT EXCLUSIVE BROKERS FOR DETAILS:

**EDWARD GOTTLIEB, CRX, CLS**

Associate Real Estate Broker

ed@schuckmanrealty.com

**JESSICA VILMENAY**

Associate Real Estate Broker

jessica@schuckmanrealty.com

12 E. 49TH STREET, SUITE 10-107 / NEW YORK, NY 10017  
1983 MARCUS AVENUE, SUITE 102 / LAKE SUCCESS, NY 11042

WWW.SCHUCKMANREALTY.COM

P. 516.496.8888

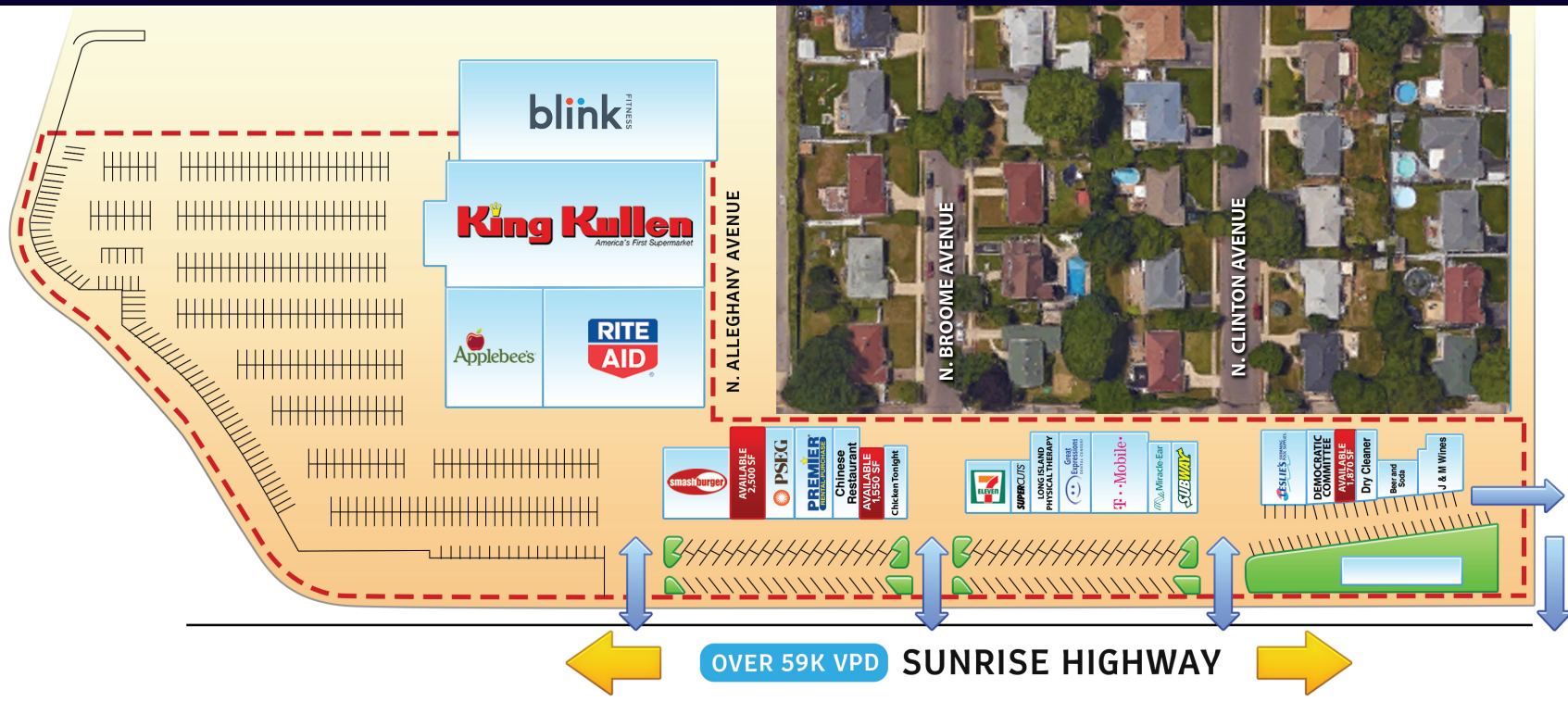
This information contained herein has been obtained from sources believed reliable. However, we have not verified it and make no guarantee, warranty or representation about it. It is submitted subject to the possibility of errors, omissions, change of price, rental and other conditions, prior sale, lease or financing, or withdrawal without notice. It is your responsibility to independently confirm its accuracy and completeness. Any projections, opinions, assumptions, or estimates used are for example only and they may not represent the current or future suitability, availability or performance of the property. You and your tax and legal advisors should conduct your own investigation of any property and transaction. We may or may not have an exclusive or nonexclusive contractual relationship with a tenant or the owner/landlord of a particular property; and if we do, such relationship shall be fully disclosed to you on a timely basis. Third-party trademarks, service marks, graphics, and logos belong to third parties. You are not granted any right or license with respect to Schuckman Realty Inc.'s trademarks service marks, graphics, and logos or the trademarks service marks, graphics, and logos of any third party. Kenneth Schuckman is Broker of record of Schuckman Realty Inc.

**SCHUCKMAN**<sup>®</sup>  
REALTY INC.



# SUNRISE PLAZA

36-84 EAST SUNRISE HIGHWAY, LINDENHURST, NY 11757



■ AVAILABLE SPACE □ CURRENTLY OCCUPIED

36	SMASHBURGER		48	AVAILABLE (WET STORE)	1,550 SF	60	GREAT EXPRESSIONS		74	DEMOCRATIC COMMITTEE	
40	AVAILABLE	2,500 SF	50	CHICKEN		62	T-MOBILE		76	AVAILABLE	1,870 SF
42	PSE&G		52-54	7-ELEVEN		64	MIRACLE EAR		78	DRY CLEANER	
44	PREMIER		56	SUPER-CUTS		66	SUBWAY		80-82	BEER & SODA STORE	
46	CHINESE RESTAURANT		58	L.I. PHYSICAL THERAPY		70-72	LESLIE'S POOL		84	J&M WINES	

CONTACT EXCLUSIVE BROKERS FOR DETAILS:

**EDWARD GOTTLIEB, CRX, CLS**

Associate Real Estate Broker

ed@schuckmanrealty.com

**JESSICA VILMENAY**

Associate Real Estate Broker

jessica@schuckmanrealty.com

12 E. 49TH STREET, SUITE 10-107 / NEW YORK, NY 10017  
1983 MARCUS AVENUE, SUITE 102 / LAKE SUCCESS, NY 11042

WWW.SCHUCKMANREALTY.COM

P. 516.496.8888

This information contained herein has been obtained from sources believed reliable. However, we have not verified it and make no guarantee, warranty or representation about it. It is submitted subject to the possibility of errors, omissions, change of price, rental and other conditions, prior sale, lease or financing, or withdrawal without notice. It is your responsibility to independently confirm its accuracy and completeness. Any projections, opinions, assumptions, or estimates used are for example only and they may not represent the current or future suitability, availability or performance of the property. You and your tax and legal advisors should conduct your own investigation of any property and transaction. We may or may not have an exclusive or nonexclusive contractual relationship with a tenant or the owner/landlord of a particular property; and if we do, such relationship shall be fully disclosed to you on a timely basis. Third-party trademarks, service marks, graphics, and logos belong to third parties. You are not granted any right or license with respect to Schuckman Realty Inc.'s trademarks service marks, graphics, and logos or the trademarks service marks, graphics, and logos of any third party. Kenneth Schuckman is Broker of record of Schuckman Realty Inc.

**SCHUCKMAN**  
REALTY INC.