

OFFICE SPACE FOR LEASE GRAMERCY PLAZA II

1861 SOUTH WELLS AVE | MERIDIAN, ID 83642



CONTACT LISTING COMMENTS AVAILABLE SPACE

Nick Schuitemaker, CCIM
208.947.0802
✉ nick@tokcommercial.com

Mike Greene, SIOR, CCIM
208.947.0835
✉ mikeg@tokcommercial.com

Prime location in the heart of the Treasure Valley's fastest growing region.

Close proximity to restaurants and services.

Convenient access to I-84 at Eagle Road.

High quality finishes throughout.

Fiber internet service available.

Building signage available.

Panoramic foothills views.

Ground level suite.

<u>SPACE</u>	<u>SIZE</u>	<u>RATE</u>
Suite 100	4,620 SF	\$26.00/SF (Mod Gross)

———— *AVAILABLE NOW* ————

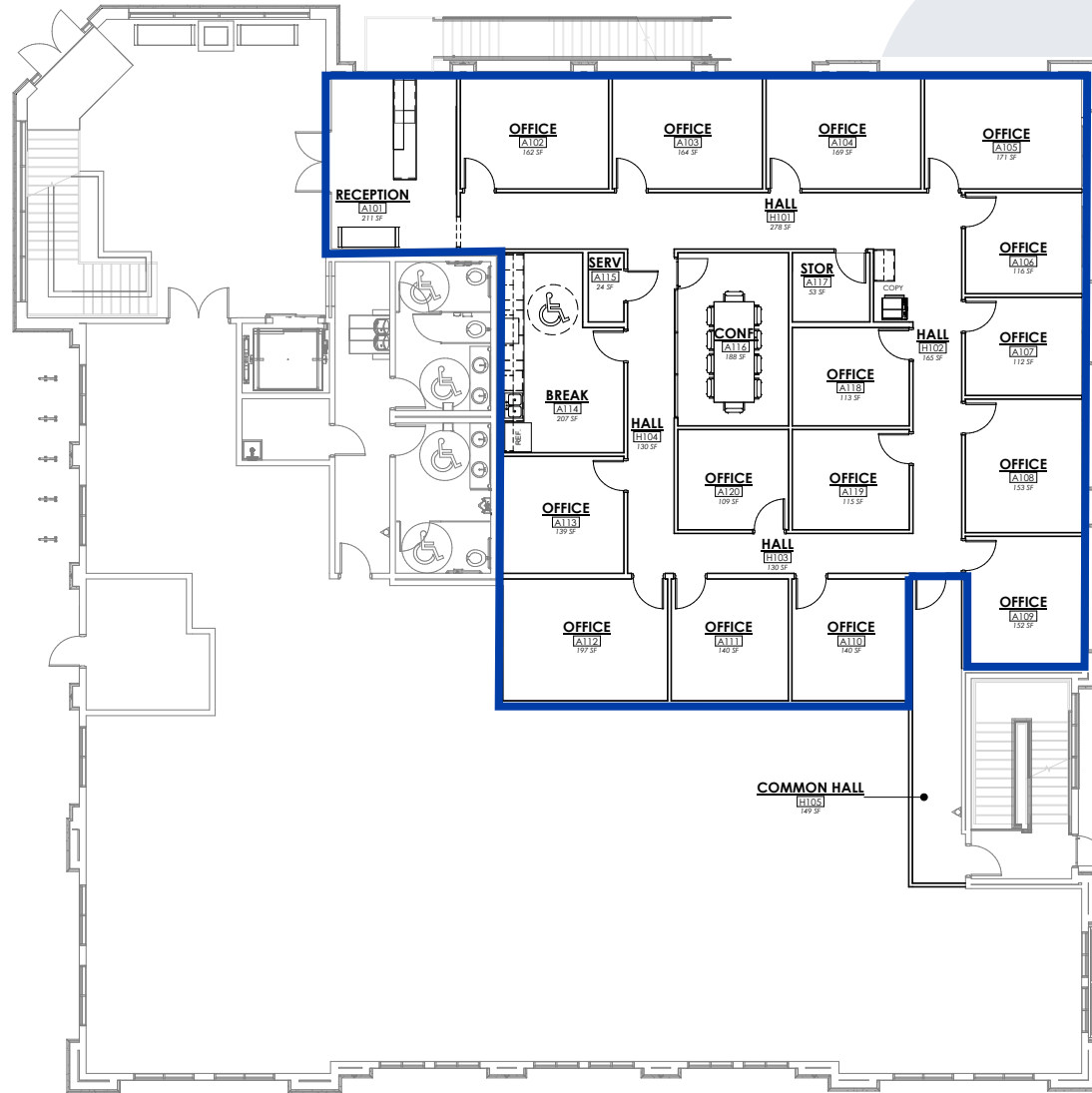


COMMERCIAL

OFFICE SPACE FOR LEASE GRAMERCY PLAZA II

1861 SOUTH WELLS AVENUE | MERIDIAN, IDAHO 83642

SUITE 100 - 4,620 SF



PROPERTY INFORMATION

- Submarket:** Meridian
- Bldg Type:** Office
- Bldg Size:** 29,082 SF
- Floors:** 3
- Parking:** 4/1000
114 total spaces
- Zoning:** C-G
- Available:** Immediately
- Lease Term:** 3+ years
- Lease Type:** Modified Gross
- TI Allowance:** Turn-key

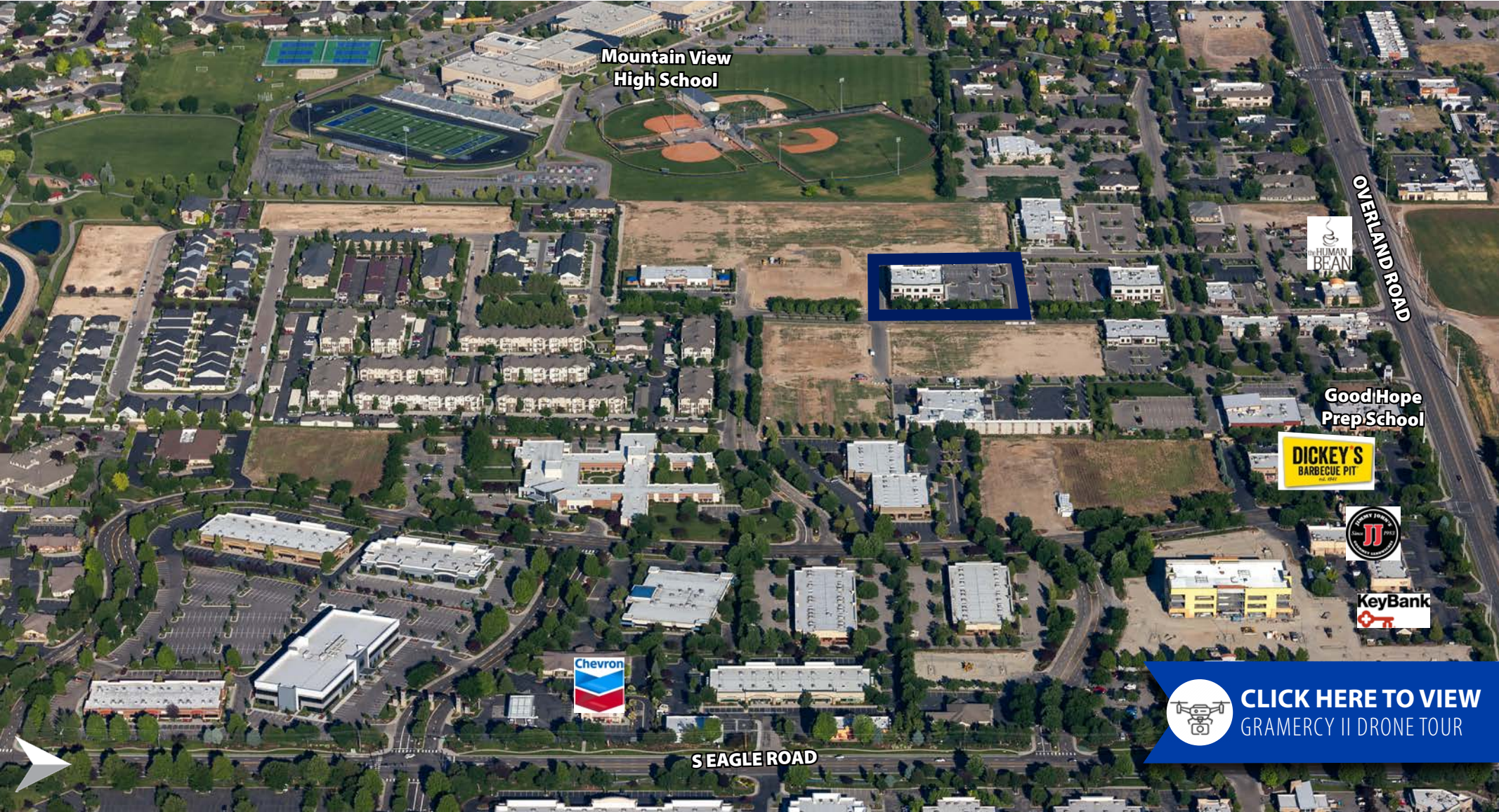




COMMERCIAL

OFFICE SPACE FOR LEASE GRAMERCY PLAZA II

1861 SOUTH WELLS AVENUE | MERIDIAN, IDAHO 83642



[CLICK HERE TO VIEW
GRAMERCY II DRONE TOUR](#)

OFFICE SPACE FOR LEASE
GRAMERCY PLAZA II
1861 SOUTH WELLS AVENUE | MERIDIAN, IDAHO 83642



 **CLICK HERE TO VIEW
GRAMERCY II DRONE TOUR**