

# 2391 Mission Street



**Rockwell**  
PROPERTIES

[www.rockwellproperties.com](http://www.rockwellproperties.com)

**Mark Kaplan**  
Rockwell Properties, Inc.  
office (415) 398-2400  
mobile (415) 552-6900  
[mark@rockwellproperties.com](mailto:mark@rockwellproperties.com)

**Jonathan Kaplan**  
Rockwell Properties, Inc.  
office (415) 398-2400  
mobile (510) 473-7270  
[jon@rockwellproperties.com](mailto:jon@rockwellproperties.com)



## Features:

- High Ceilings
- 2000 square feet

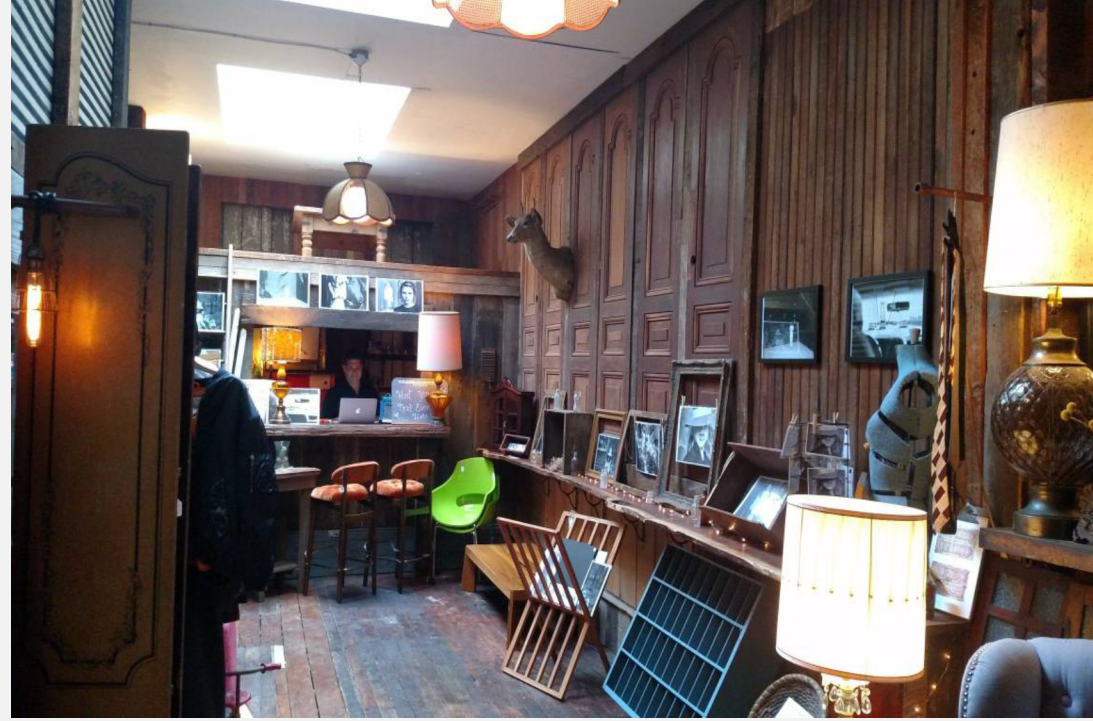


**Rockwell**  
PROPERTIES

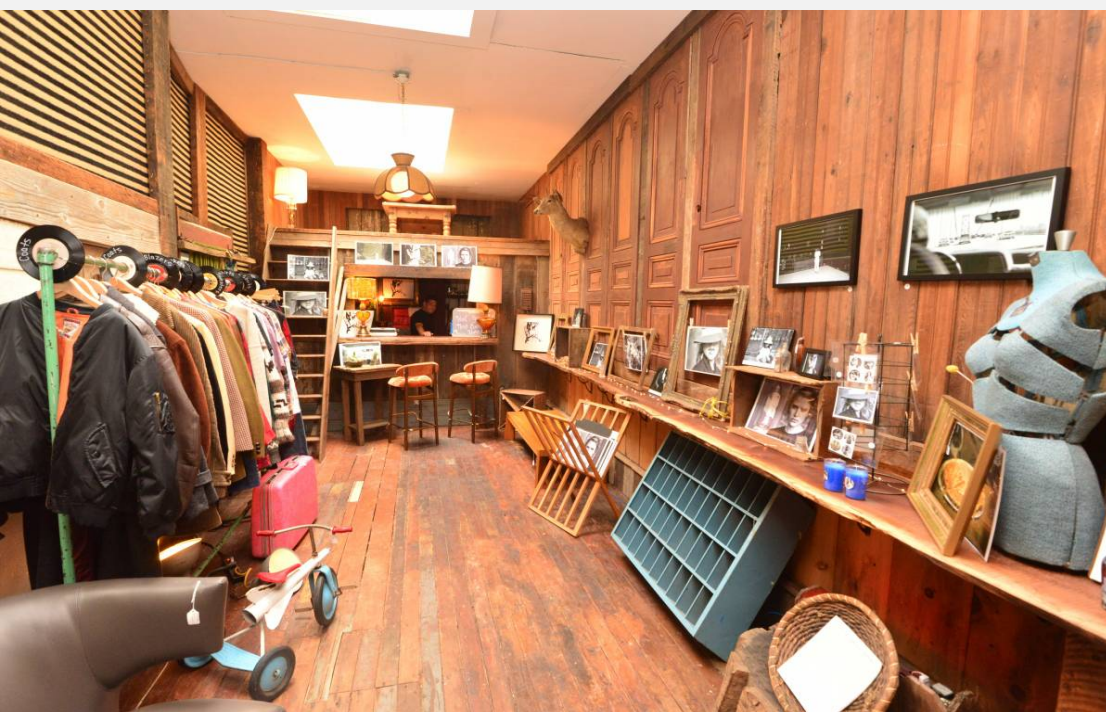
[www.rockwellproperties.com](http://www.rockwellproperties.com)

**Mark Kaplan**  
Rockwell Properties, Inc.  
office (415) 398-2400  
mobile (415) 552-6900  
[mark@rockwellproperties.com](mailto:mark@rockwellproperties.com)

**Jonathan Kaplan**  
Rockwell Properties, Inc.  
office (415) 398-2400  
mobile (510) 473-7270  
[jon@rockwellproperties.com](mailto:jon@rockwellproperties.com)



- Separate rear room
- Skylights
- Bar
- Original Interior Details



**Rockwell**  
PROPERTIES

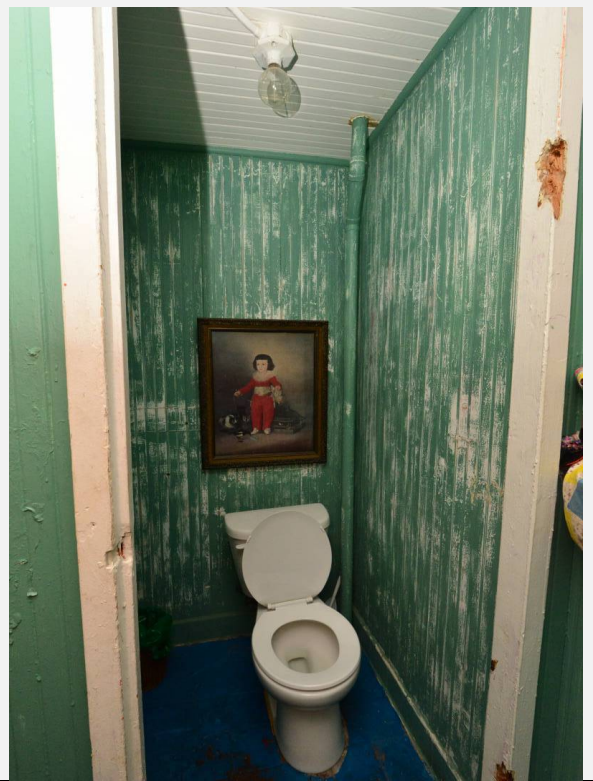
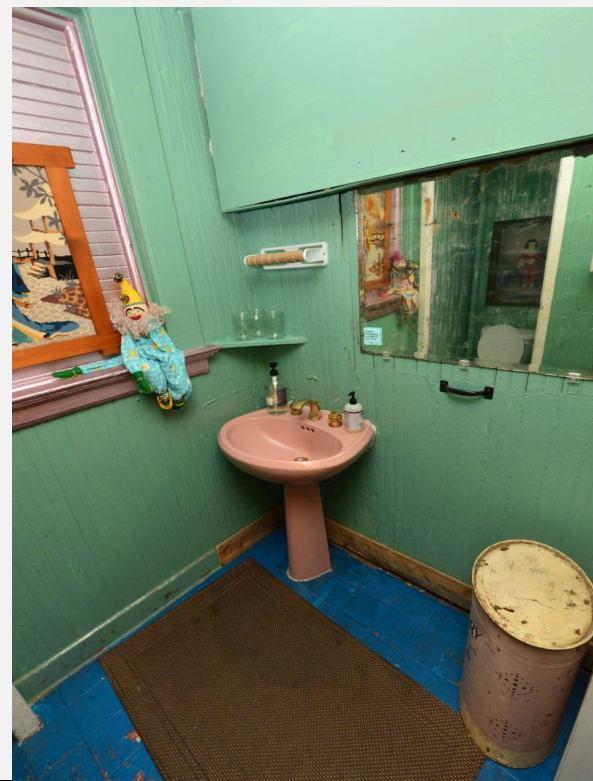
[www.rockwellproperties.com](http://www.rockwellproperties.com)

**Mark Kaplan**  
Rockwell Properties, Inc.  
office (415) 398-2400  
mobile (415) 552-6900  
[mark@rockwellproperties.com](mailto:mark@rockwellproperties.com)

**Jonathan Kaplan**  
Rockwell Properties, Inc.  
office (415) 398-2400  
mobile (510) 473-7270  
[jon@rockwellproperties.com](mailto:jon@rockwellproperties.com)



- Prime Mission Street Location
- Additional Mezzanine and Basement Storage

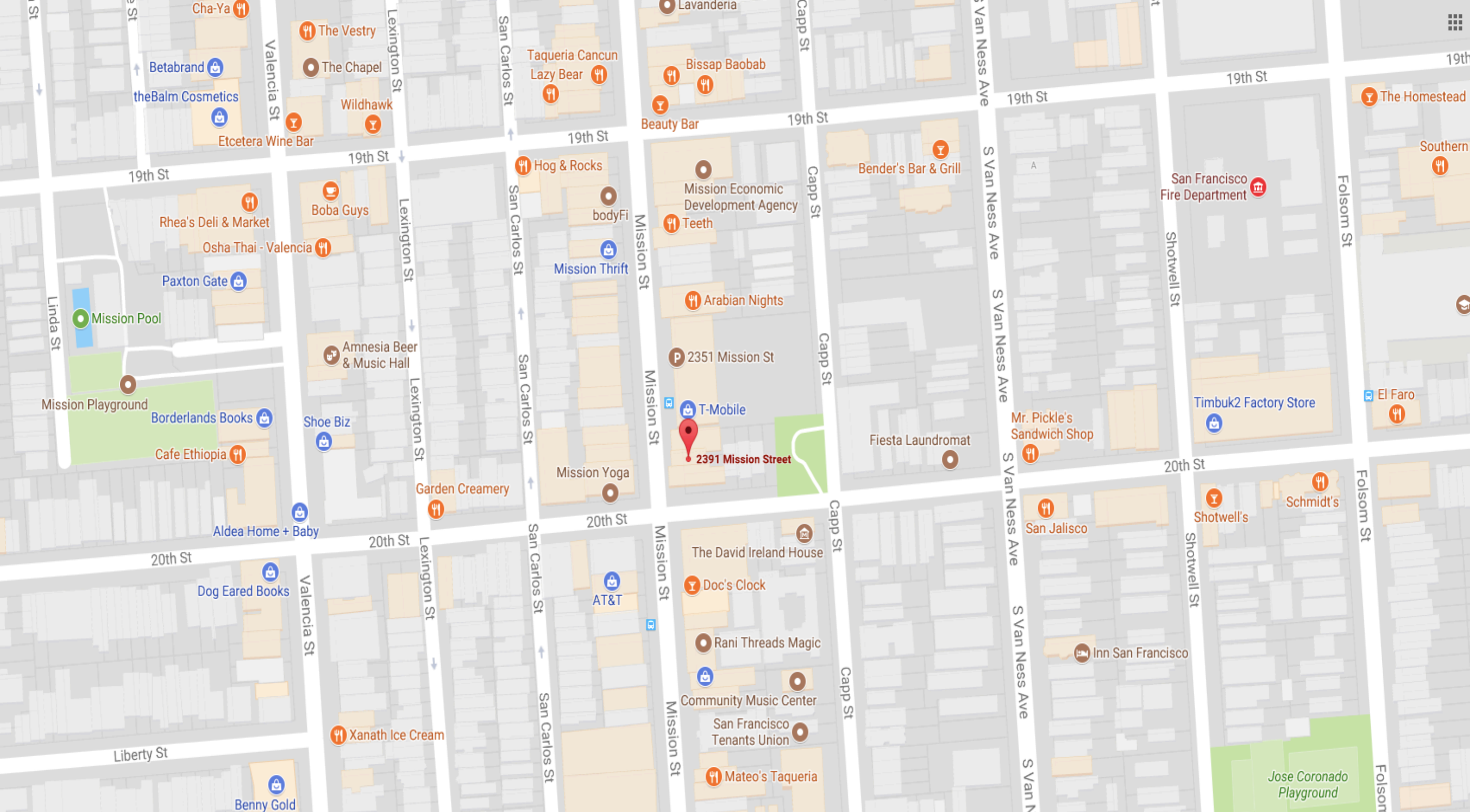


**Rockwell**  
PROPERTIES

[www.rockwellproperties.com](http://www.rockwellproperties.com)

**Mark Kaplan**  
Rockwell Properties, Inc.  
office (415) 398-2400  
mobile (415) 552-6900  
mark@rockwellproperties.com

**Jonathan Kaplan**  
Rockwell Properties, Inc.  
office (415) 398-2400  
mobile (510) 473-7270  
jon@rockwellproperties.com



# Rockwell

PROPERTIES

[www.rockwellproperties.com](http://www.rockwellproperties.com)

**Mark Kaplan**  
Rockwell Properties, Inc.  
office (415) 398-2400  
mobile (415) 552-6900  
[mark@rockwellproperties.com](mailto:mark@rockwellproperties.com)

**Jonathan Kaplan**  
Rockwell Properties, Inc.  
office (415) 398-2400  
mobile (510) 473-7270  
[jon@rockwellproperties.com](mailto:jon@rockwellproperties.com)



## CONTACT

---

**Mark Kaplan**

Rockwell Properties, Inc.

office (415) 398-2400

mobile (415) 552-6900

mark@rockwellproperties.com

**Jonathan Kaplan**

Rockwell Properties, Inc.

office (415) 398-2400

mobile (510) 473-7270

jon@rockwellproperties.com

---

This information has been secured from sources we believe to be reliable but we make no representations, warranties, express or implied, as to the accuracy of the information. Listing broker has been given enough information to provide only a preliminary interest in the property. The materials are not to be considered fact. The information contained herein is not a substitute for thorough due diligence investigation. References to square footage, zoning, use, or age are approximate. Please contact the San Francisco Planning Department to verify zoning at (415) 558-6378, as neither broker or landlord represent that this space is suitable for your use. Tenant or Buyer must verify the information at their own expense and bears all the risk for any inaccuracies. By receiving these materials you are agreeing to the disclaimers set forth herein.