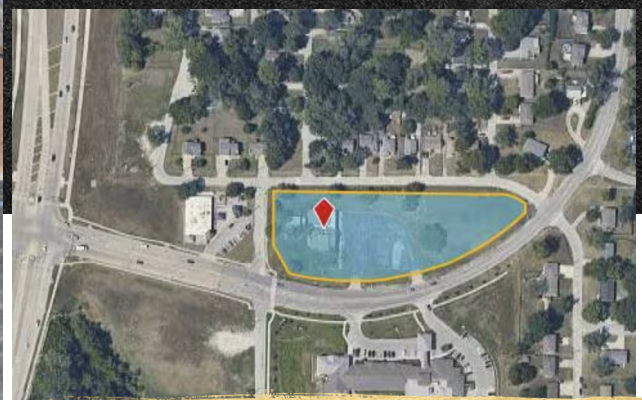
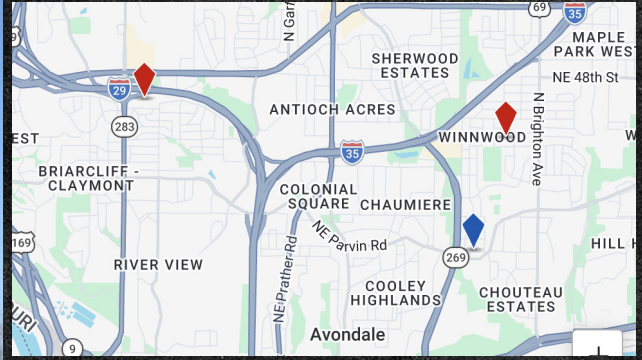




For Sale!

4300 NE PARVIN ROAD



SPECIALTY BUILDING OPPORTUNITY!

This 7,900 square foot church is located on a 2.29 acre lot zoned B3-2 with easy access to 269 highway, located in Kansas City, MO. The building was a previous Boatman's Bank before being converted. There is a large sanctuary with a full kitchen, numerous offices or meeting rooms on the first level. The building has a working elevator to allow easy access to the lower level where there are more offices or classrooms. The building's roof was replaced less than three years ago and has updated HVAC systems. This building represents a great investment for a future congregation looking to grow or redevelopment into a daycare or retail site with approximately 55 parking spots.

FEATURES:

- Located at the entrance to a large residential community
- Close to Chouteau Elementary School
- Large building with multiple small office areas
- Large kitchen located inside the large sanctuary
- Multiple bathrooms on each floor
- Working elevator
- Large sanctuary with vaulted ceiling
- Updated HVAC systems on the roof
- Large classroom or conference rooms
- Separate mechanical and storage rooms

7,900

SQUARE FEET

8

PRIVATE OFFICES/ROOMS

1

KITCHEN AREA

1

SANCTUARY

BRIAN DIEFFENBACH

Commercial Real Estate Advisor

OFFICE

816.222.4595

MOBILE

913.424.7782

BTDBACH@GMAIL.COM

ONE

For Sale!
4300 NE PARVIN ROAD

