



GEORGETOWN PLAZA

8 Georgetown Plaza
Georgetown, DE 19947

RETAIL PROPERTY FOR LEASE

PROPERTY DESCRIPTION

Georgetown Plaza is a stabilized neighborhood center centrally located along busy Route 9 in the heart of Georgetown's regional retail corridor. The Plaza has recently undergone significant renovations and a new 2,085 SF pad site is soon to come.

Georgetown Plaza is currently occupied by a complimentary mix of local and regional tenants, including: Taco Bell, Dollar General, Kentucky Fried Chicken, Rite Aid, Tidewater Physical Therapy and Flex World Fitness.

LOCATION DESCRIPTION

Georgetown Plaza is located in Georgetown, Sussex County, DE on the corner of Route 9 and DuPont Highway (Route 113).

- Approximately 16.5 miles from Rehoboth Beach
- Situated at a major intersection for VA, MD, and DC traffic
- Serviced by a fully signalized four point intersection
- Great accessibility and visibility
- Traffic counts on Route 113 at approximately 22,000 vehicles per day

DEMOGRAPHICS AT A GLANCE

2015 Demographics	3 Mile	5 Mile	10 Mile
Population	11,285	16,352	55,788
Avg. HH Income	\$61,466	\$64,372	\$65,792
Avg. HH Size	3.28	3.06	2.74
Households	2,946	4,807	19,608
Median Age	32.6	34.2	39.5



TWO SPACES AVAILABLE:
1,800 SF
8,300 SF



FOR MORE INFORMATION, CONTACT:

Jim Tancredi
jtancredi@dsmre.com
302-222-7574 (cell)
302-227-0768 (office)

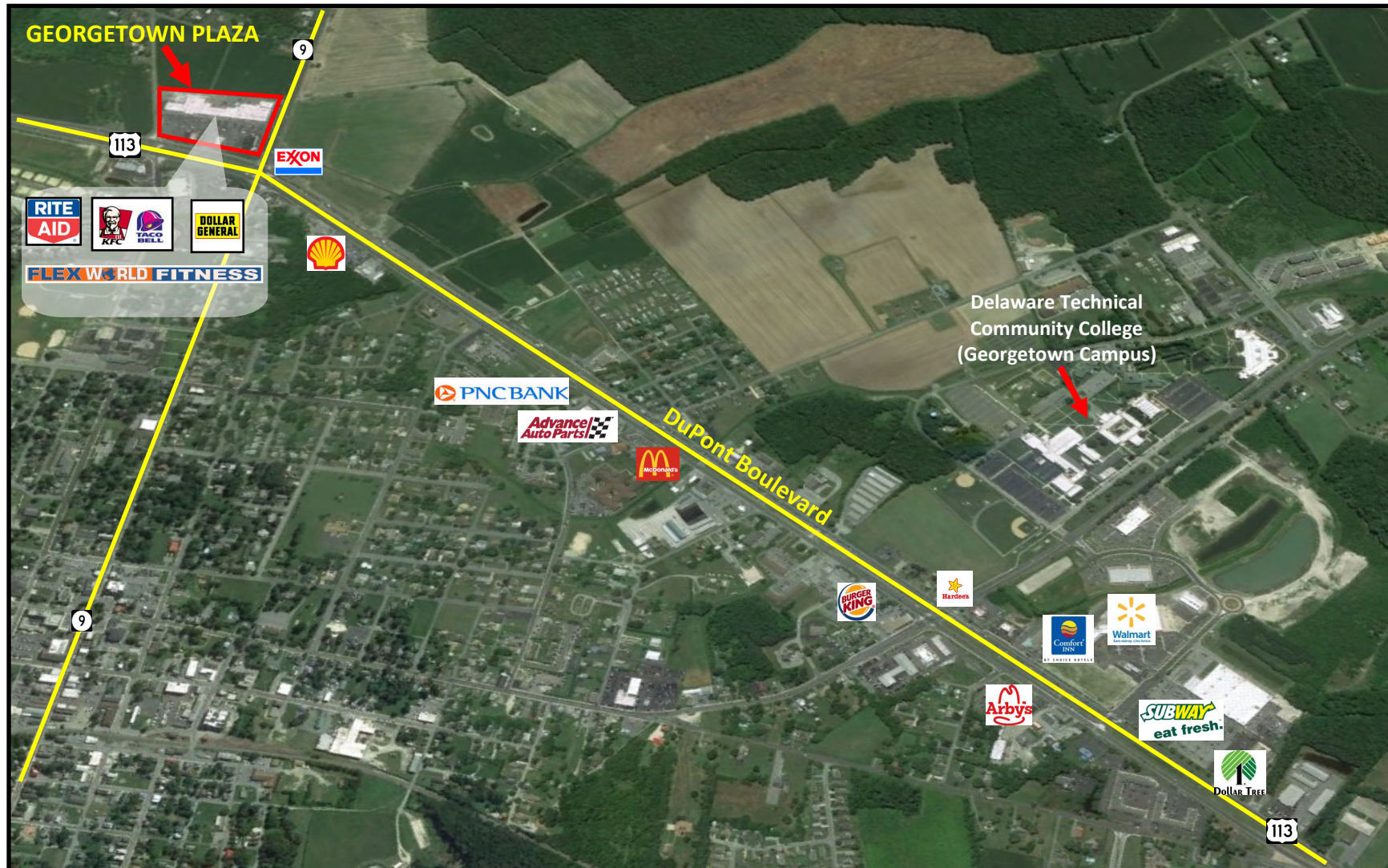
WWW.DSMRE.COM

DSM Commercial
Real Estate Services
910 S. Chapel Street
Suite 100
Newark, DE 19713

GEORGETOWN PLAZA

8 Georgetown Plaza
Georgetown, DE 19947

AERIAL MAP



FOR MORE INFORMATION, CONTACT:

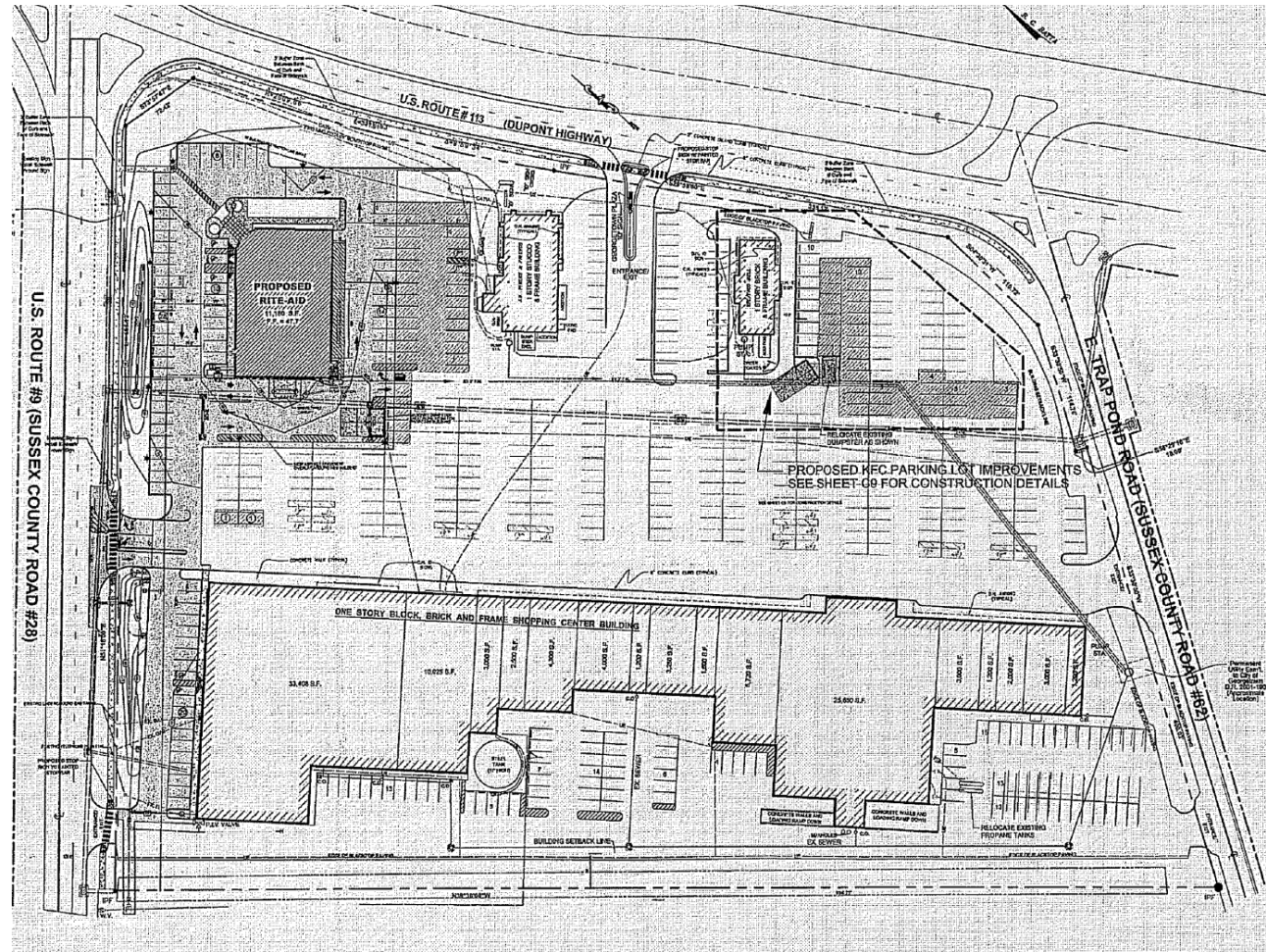
Jim Tancredi
jtancredi@dsmre.com
302-222-7574 (cell)
302-227-0768 (office)

WWW.DSMRE.COM

DSM Commercial
Real Estate Services

910 S. Chapel Street
Suite 100
Newark, DE 19713

SITE PLAN



FOR MORE INFORMATION, CONTACT:

Jim Tancredi
jtancredi@dsmre.com
302-222-7574 (cell)
302-227-0768 (office)

WWW.DSMRE.COM

DSM Commercial
Real Estate Services

910 S. Chapel Street
Suite 100
Newark, DE 19713

GEORGETOWN PLAZA

8 Georgetown Plaza
Georgetown, DE 19947

TRAFFIC COUNT MAP



FOR MORE INFORMATION, CONTACT:

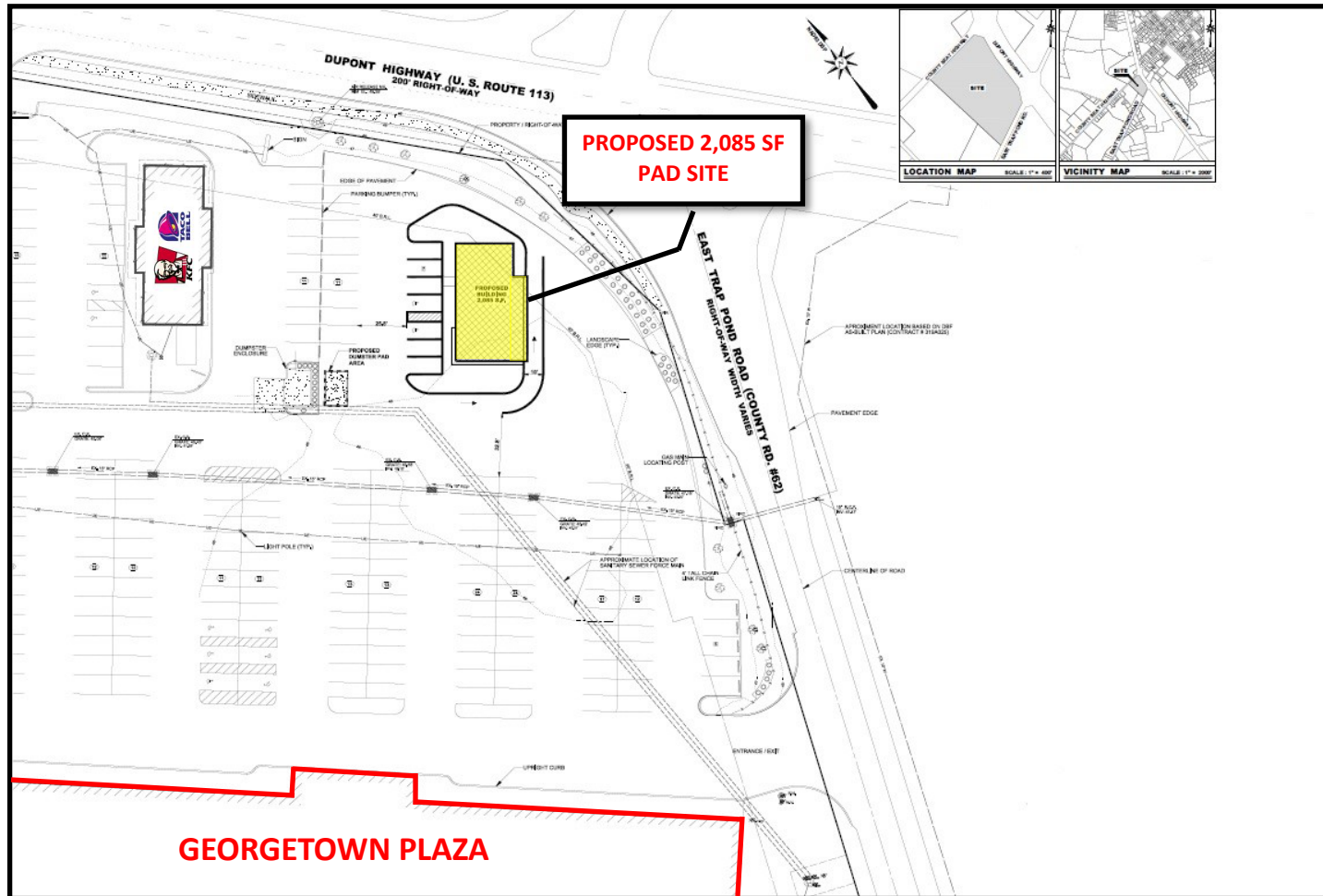
Jim Tancredi
jtancredi@dsmre.com
302-222-7574 (cell)
302-227-0768 (office)

WWW.DSMRE.COM

DSM Commercial
Real Estate Services

910 S. Chapel Street
Suite 100
Newark, DE 19713

CONCEPTUAL SITE PLAN



This information has been secured from sources we believe to be reliable, but we make no representation or warranties, expressed or implied, as to the accuracy of the information. References to square footage or age are approximate. Buyer must verify the information and bears all risk for any inaccuracies. Any projections, opinions, assumptions or estimates used herein are for example purposes only and do not represent the current or future performance of the property.

FOR MORE INFORMATION, CONTACT:

Jim Tancredi
jtancredi@dsmre.com
302-222-7574 (cell)
302-227-0768 (office)

WWW.DSMRE.COM

DSM Commercial
Real Estate Services

910 S. Chapel Street
Suite 100
Newark, DE 19713