



# Multi-Use Building Available

**1800 HIGH GROVE ROAD  
GRANDVIEW, MISSOURI**

## Property Highlights

- 7,310 sf building
- 0.73 acre site
- Former private school
- Great opportunity for school, daycare or office use
- High ceilings and well maintained
- Excellent parking ratio
- Immediate access to 71 Highway
- Sale price \$595,000
- Lease rate \$10.50/sf, modified gross

*For information, please contact:*

### **Seamus M. McLaughlin**

*Associate Director*

t 816-268-4223

smclaughlin@nzimmer.com

### **Tommy Gentry**

*Associate Director*

t 816-268-4249

tgentry@nzimmer.com

1220 Washington Street, Suite 300  
Kansas City, MO 64105

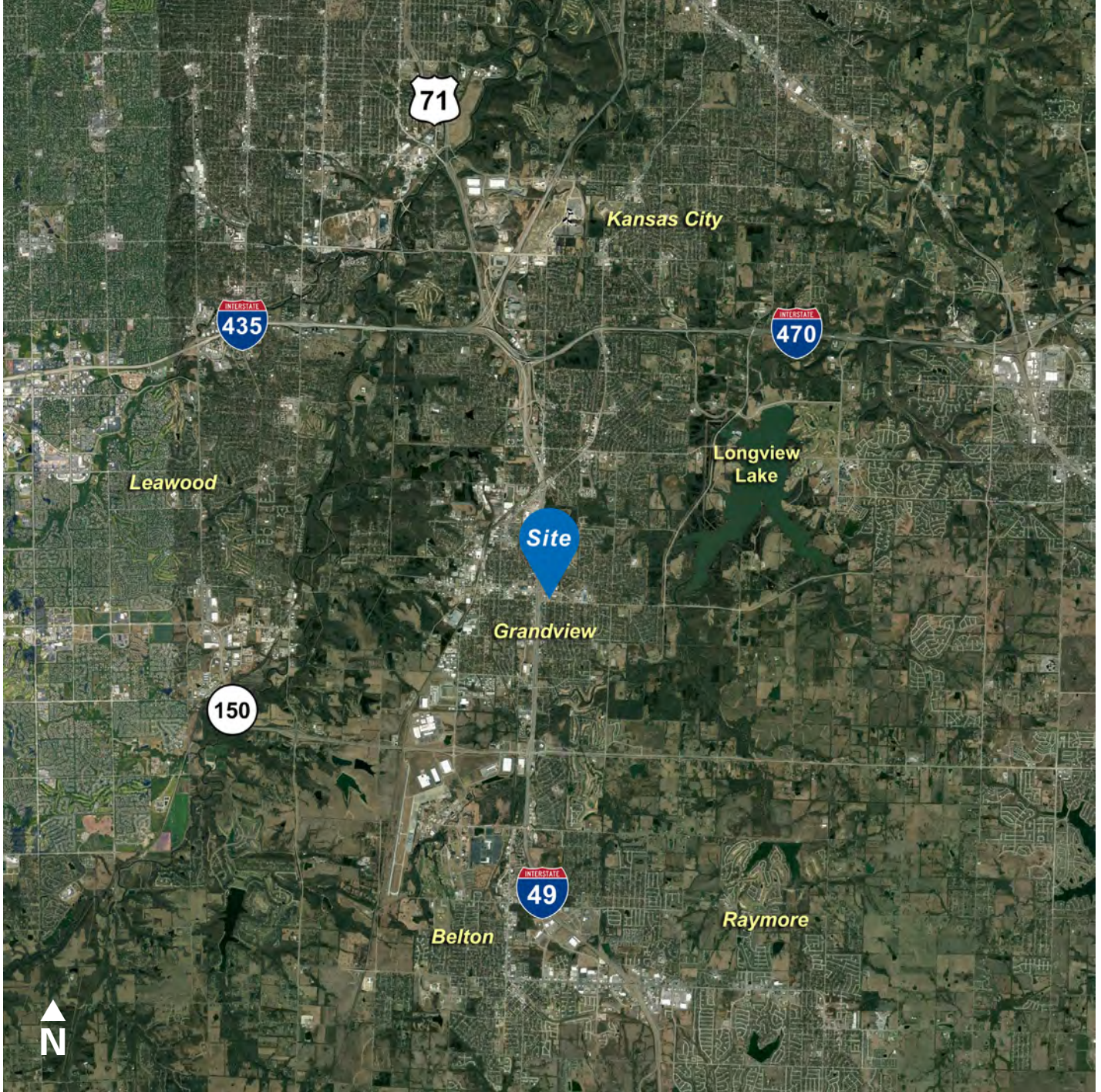
[nrmkzimmer.com](http://nrmkzimmer.com)



**NEWMARK  
ZIMMER**

The information contained herein has been obtained from sources deemed reliable but has not been verified and no guarantee, warranty or representation, either express or implied, is made with respect to such information. Terms of sale or lease and availability are subject to change or withdrawal without notice.

1800 HIGH GROVE ROAD, GRANDVIEW, MISSOURI



CONTACT

**Seamus M. McLaughlin**

*Associate Director*

t 816-268-4223

smclaughlin@nzimmer.com

[nmrkzimmer.com](http://nmrkzimmer.com)

**Tommy Gentry**

*Associate Director*

t 816-268-4249

tgentry@nzimmer.com

**NEWMARK**  
ZIMMER

1800 HIGH GROVE ROAD, GRANDVIEW, MISSOURI



CONTACT

**Seamus M. McLaughlin**

*Associate Director*

t 816-268-4223

smclaughlin@nzimmer.com

[nmrkzimmer.com](http://nmrkzimmer.com)

**Tommy Gentry**

*Associate Director*

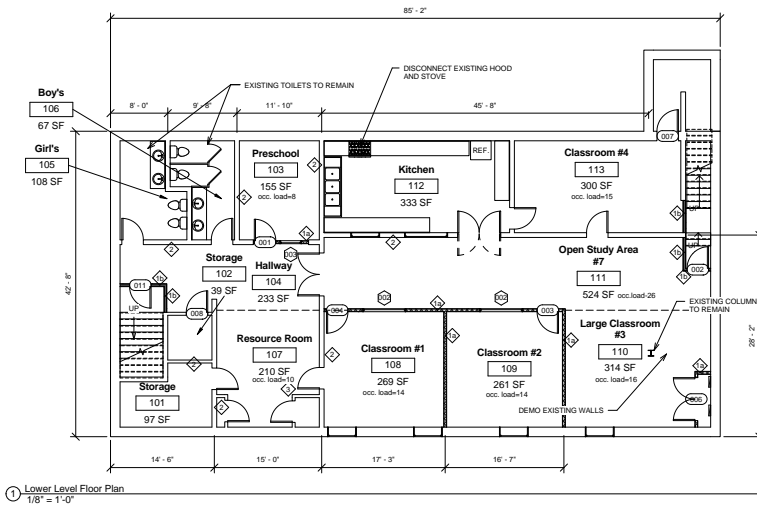
t 816-268-4249

tgentry@nzimmer.com

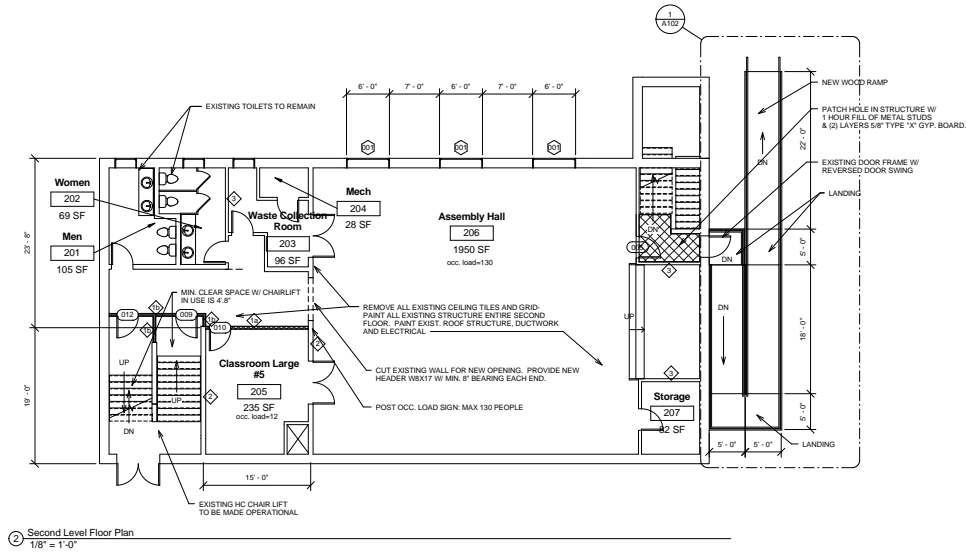
**NEWMARK**  
ZIMMER

# 1800 HIGH GROVE ROAD, GRANDVIEW, MISSOURI

## Floor Plan



REMOVE ALL CEILINGS, WOOD PANELING AND FURRING IN ENTIRE BUILDING  
ALL STAIRS SHALL HAVE HANDRAILS AT BOTH SIDES



FIELD VERIFY ALL DIMENSIONS PRIOR TO ANY CONSTRUCTION

### CONTACT

**Seamus M. McLaughlin**  
Associate Director  
t 816-268-4223  
smclaughlin@nzimmer.com

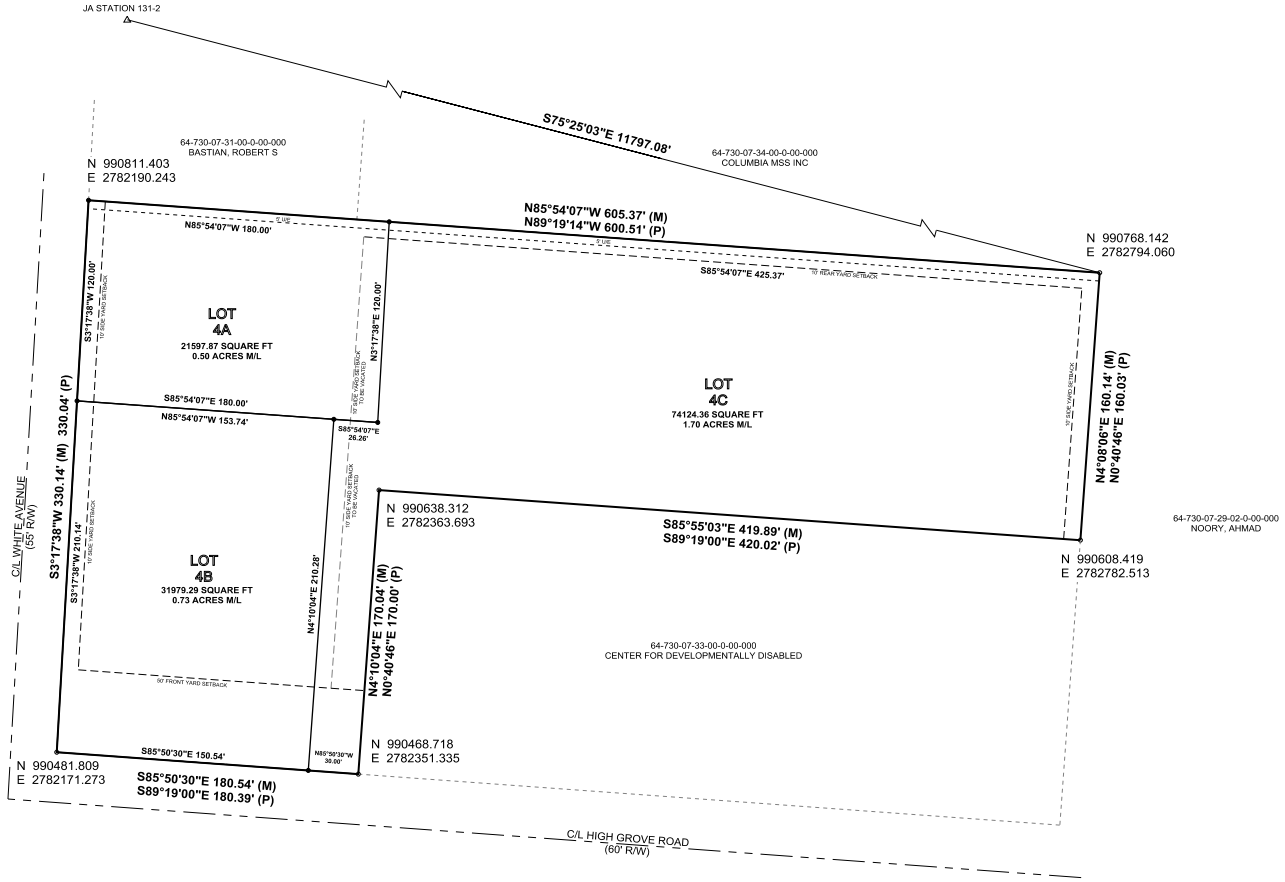
**Tommy Gentry**  
Associate Director  
t 816-268-4249  
tgentry@nzimmer.com

[nmrkzimmer.com](http://nmrkzimmer.com)

**NEWMARK**  
ZIMMER

# 1800 HIGH GROVE ROAD, GRANDVIEW, MISSOURI

## Floor Plan



### CONTACT

**Seamus M. McLaughlin**

Associate Director

t 816-268-4223

smclaughlin@zimmer.com

[nmrkzimmer.com](http://nmrkzimmer.com)

**Tommy Gentry**

Associate Director

t 816-268-4249

tgentry@zimmer.com

**NEWMARK**  
ZIMMER