



4835 S Fulton Ave

4835 S Fulton Ave, Tulsa, OK 74135



Amber Wells

HLCJ Holdings

4835 S Fulton Ave, Suite 101, Tulsa, OK 74135

amber@ellis-concrete.com

(918) 845-6177



4835 S Fulton Ave

\$22.29 - \$26.40 /SF/YR

Prime Medical Office Suites for Lease in the Heart of Tulsa

Located at 51st and Yale, this newly listed medical clinic is actively seeking healthcare professionals to join the vibrant community of medical practitioners. Available suites are perfect for a variety of specialties, including:

Counselors & Therapists
Chiropractors
Healthcare Training Facilities
Estheticians
Insurance
And more...

Our fully equipped suites offer:

Private Reception Areas with built-in file cabinets
Comfortable Waiting Areas for patients
Spacious Patient Rooms with ample space for care
Water Access in most available suites
Modern, well-maintained facilities to suit the needs of your...

- Located in the heart of Tulsa, at 51st Yale



Rental Rate: \$22.29 - \$26.40 /SF/YR

Property Type: Office

Property Subtype: Medical

Building Class: B

Rentable Building Area: 9,015 SF

Year Built: 1985

Walk Score ®: 60 (Moderately friendly)

Transit Score ®: 30 (Somewhat friendly)

Rental Rate Mo: \$2.20 /SF/MO

1st Floor Ste 101

Space Available	1,500 SF
Rental Rate	\$26.40 /SF/YR
Date Available	Now
Service Type	Full Service
Built Out As	Standard Office
Space Type	Relet
Space Use	Office/Medical
Lease Term	2 - 10 Years

MOVE IN SPECIAL - 1 MONTH FREE W/ 2 YEAR LEASE! This newly painted 1500sqf Medical Office is located in the heart of Tulsa, OK, it's conveniently located at 51st and Yale. The 101 Medical Suite features 5 Exam Rooms, Print/ Triage Room, Utility / Coat Closet, Glassed in Reception Space w/ a Full Wall Built-in File Cabinet. 3 Offices w/ Water Access and 2 w/ Sinks. 300 sqft Waiting Room featuring Wood Flooring. Kitchen w/ Washer Dryer Hook Ups, Nest Thermostat.

1

1st Floor Ste 103

Space Available	700 SF
Rental Rate	\$22.29 /SF/YR
Date Available	Now
Service Type	Full Service
Built Out As	Standard Office
Space Type	Relet
Space Use	Office/Medical
Lease Term	2 - 10 Years

MOVE IN SPECIAL - 1 MONTH FREE W/ 2 YEAR LEASE! Medical/Office Suite for Lease – Prime Location in the Heart of Tulsa, OklahomaSize: 700 sq ftFeatures:Quiet and professional buildingRestroom with additional storage spaceOne spacious office w/ updated flooringTwo offices offering natural light w/ water Separate waiting room area for clients or patientsThis suite offers a comfortable and private setting, ideal for a medical office, therapy practice, or professional services. Its prime location provides easy access to local amenities, making it convenient for both clients and staff.

2

1st Floor Ste 104

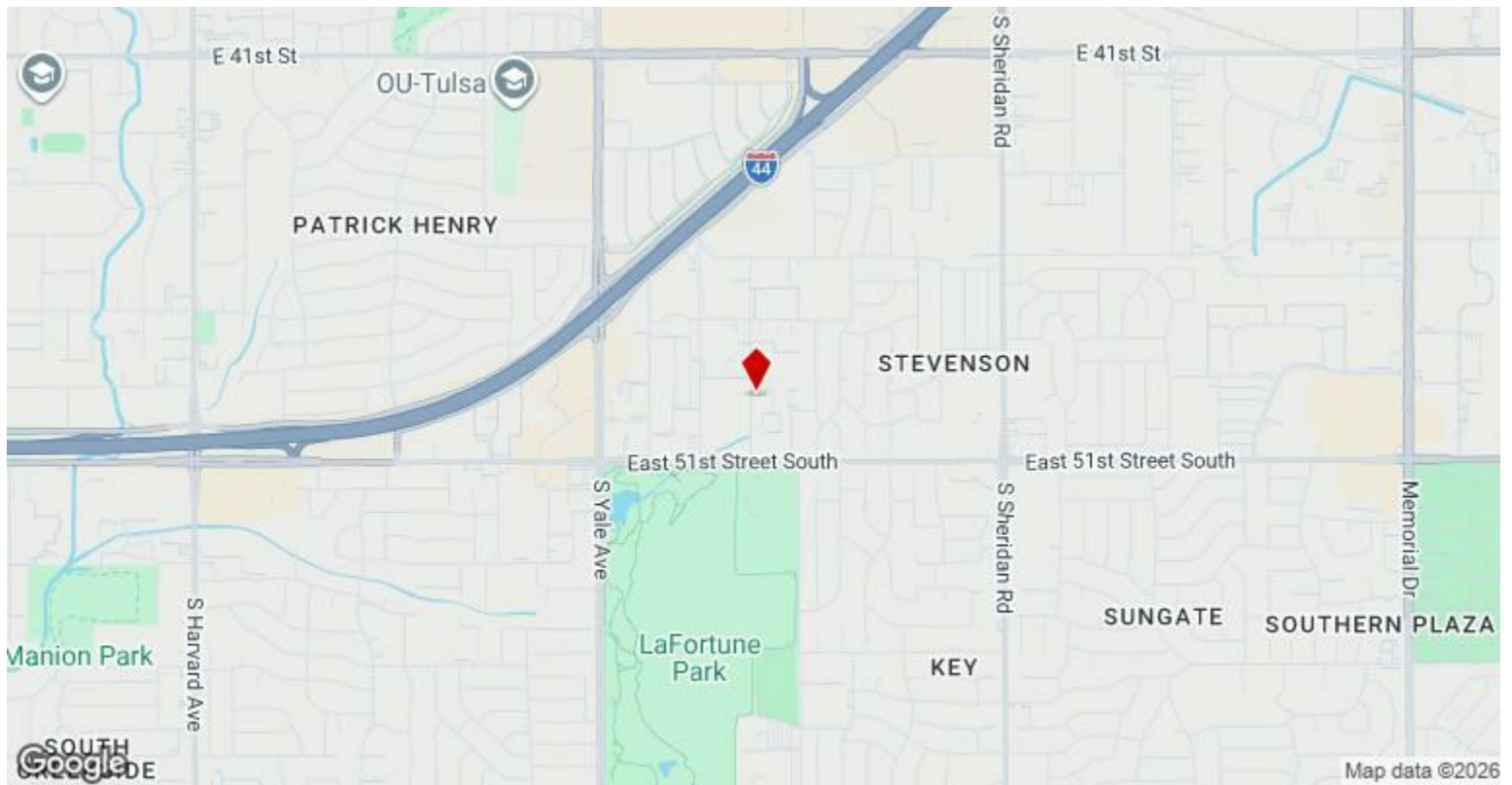
Space Available	675 SF
Rental Rate	\$23.11 /SF/YR
Date Available	July 01, 2026
Service Type	Full Service
Space Type	Relet
Space Use	Office/Medical
Lease Term	2 - 10 Years

Medical/Office Suite for Lease - Prime Location in the Heart of Tulsa, Oklahoma* Size 675 sq ftSPECIAL: Sign a 2 year lease and receive a month off!Features:*Quiet and Professional Building Newly Painted Interior Common Areas. *Private Office *Large Office / Conference Room *Reception / Waiting Room area for clients or patientsThis suite offers a comfortable and private setting, ideal for a medical office, therapy practice, or professional services. Its prime location provides easy access to local amenities, making it convenient for both clients and staff.4835 S. Fulton Ave Ste.103 Tulsa, Ok 74135Please call 918.845.6177 for a showing M-F 8-3:30

3

Major Tenant Information

Tenant	SF Occupied	Lease Expired
Stout Computer Repair	-	



4835 S Fulton Ave, Tulsa, OK 74135

Prime Medical Office Suites for Lease in the Heart of Tulsa

Located at 51st and Yale, this newly listed medical clinic is actively seeking healthcare professionals to join the vibrant community of medical practitioners. Available suites are perfect for a variety of specialties, including:

- Counselors & Therapists
- Chiropractors
- Healthcare Training Facilities
- Estheticians
- Insurance
- And more...

Our fully equipped suites offer:

- Private Reception Areas with built-in file cabinets
- Comfortable Waiting Areas for patients
- Spacious Patient Rooms with ample space for care
- Water Access in most available suites

Modern, well-maintained facilities to suit the needs of your practice

This is an ideal location for professionals looking to expand or start their practice in a well-established, easily accessible area of Tulsa.

Reach out today to schedule a tour and secure your spot in this prime location!

Property Photos



Sign

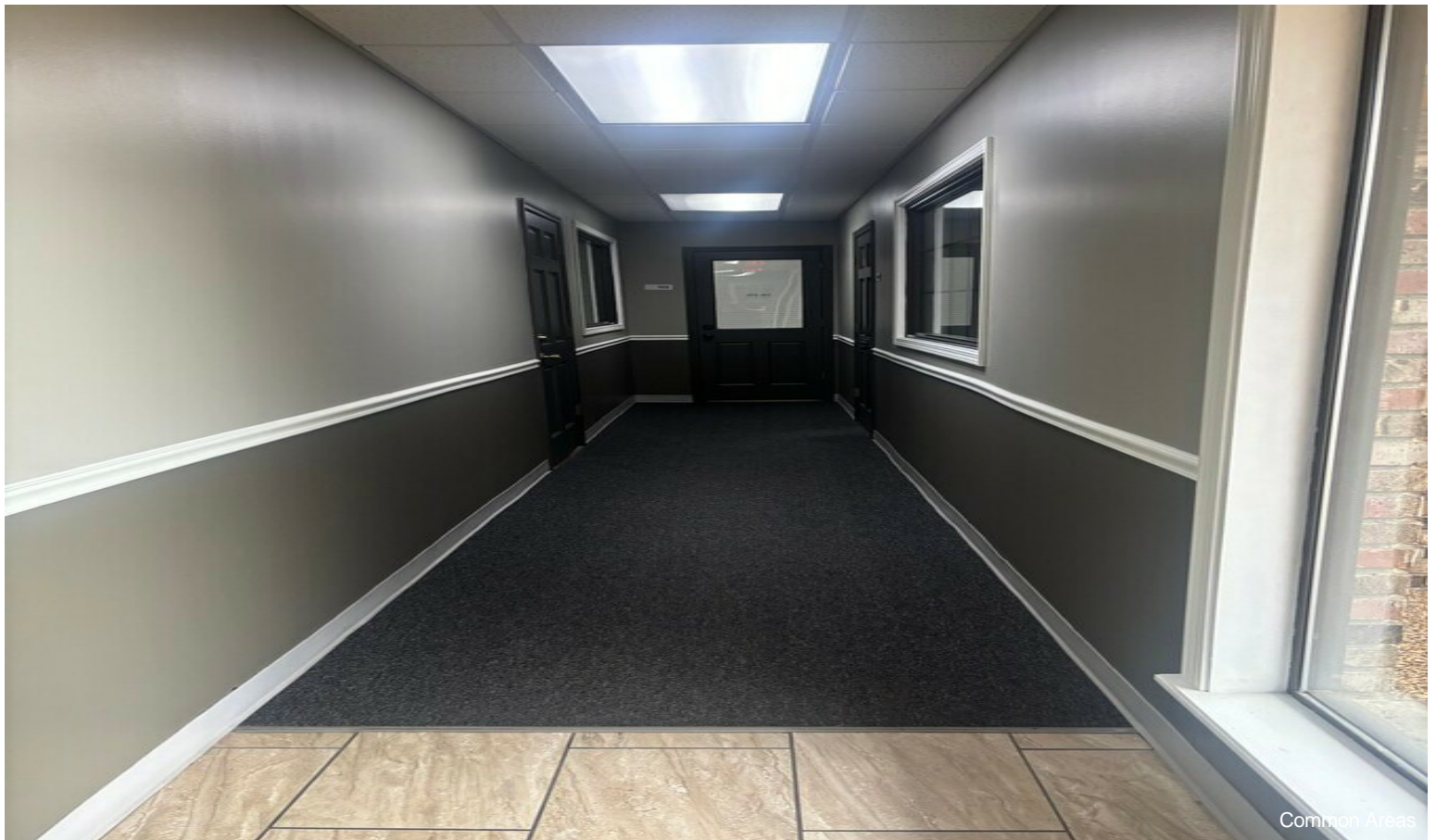


Common Areas

Property Photos

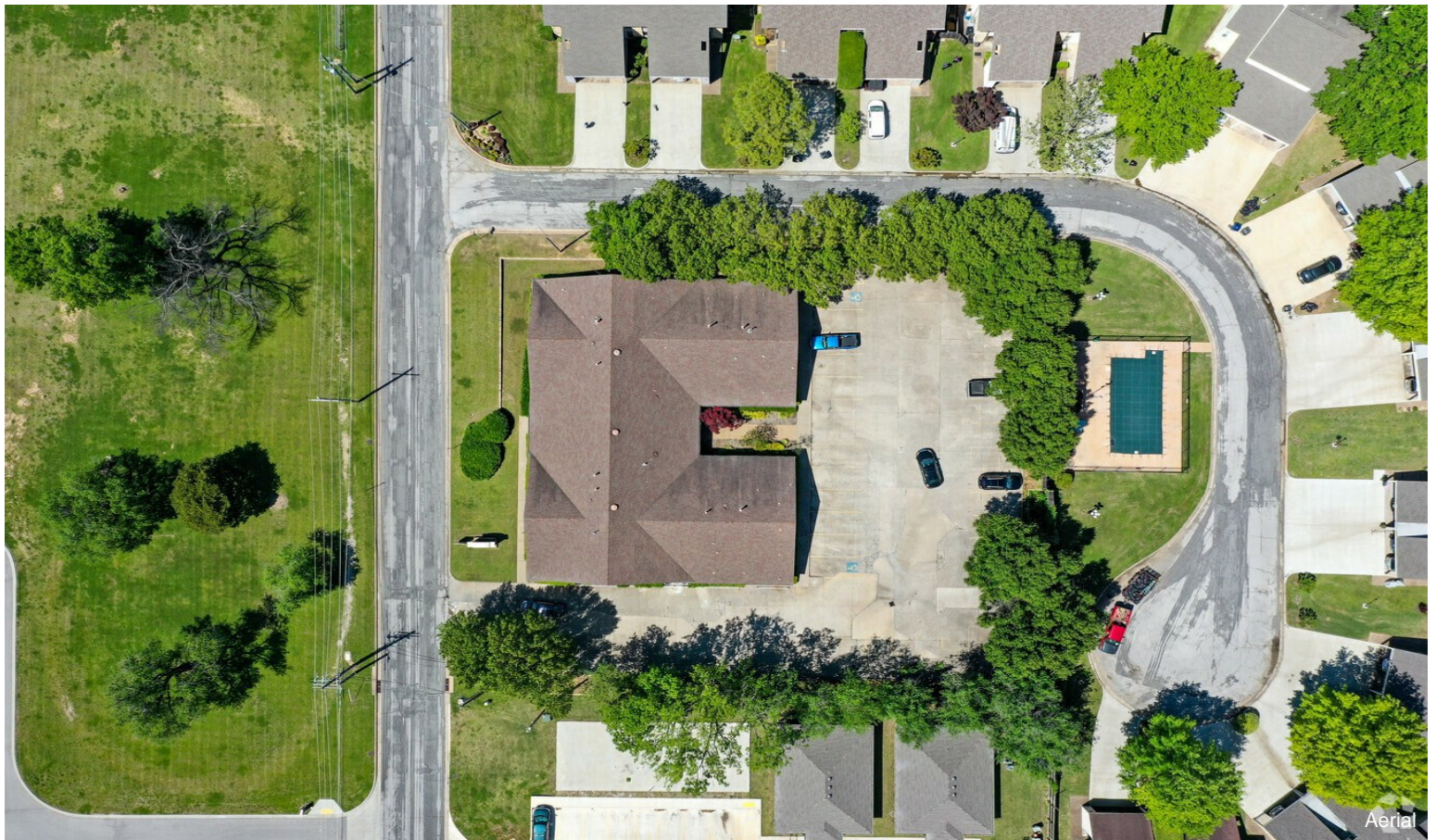


Common Areas



Common Areas

Property Photos



Property Photos



Property Photos



Suite 101 Reception Desk w/ Glass Window



Exterior Entrance

Property Photos



Suite 101 Hall



Suite 101 Triage/Print Room

Property Photos



Property Photos



Suite 101 Exam Room 3 w/ Sink



Suite 101 U-Shape Hall

Property Photos



Suite 101 Washer/Dryer Hookups



Suite 101 Kitchen / Breakroom

Property Photos



Property Photos



Suite 103 Room 1



Suite 103 Room 2

Property Photos



Suite 103 Room 3



Suite 103 Storage Closet

Property Photos



Property Photos



Property Photos



Property Photos



Suite 105 Hall



Suite 105 Lg Office

Property Photos



Suite 105 Storage / Sink

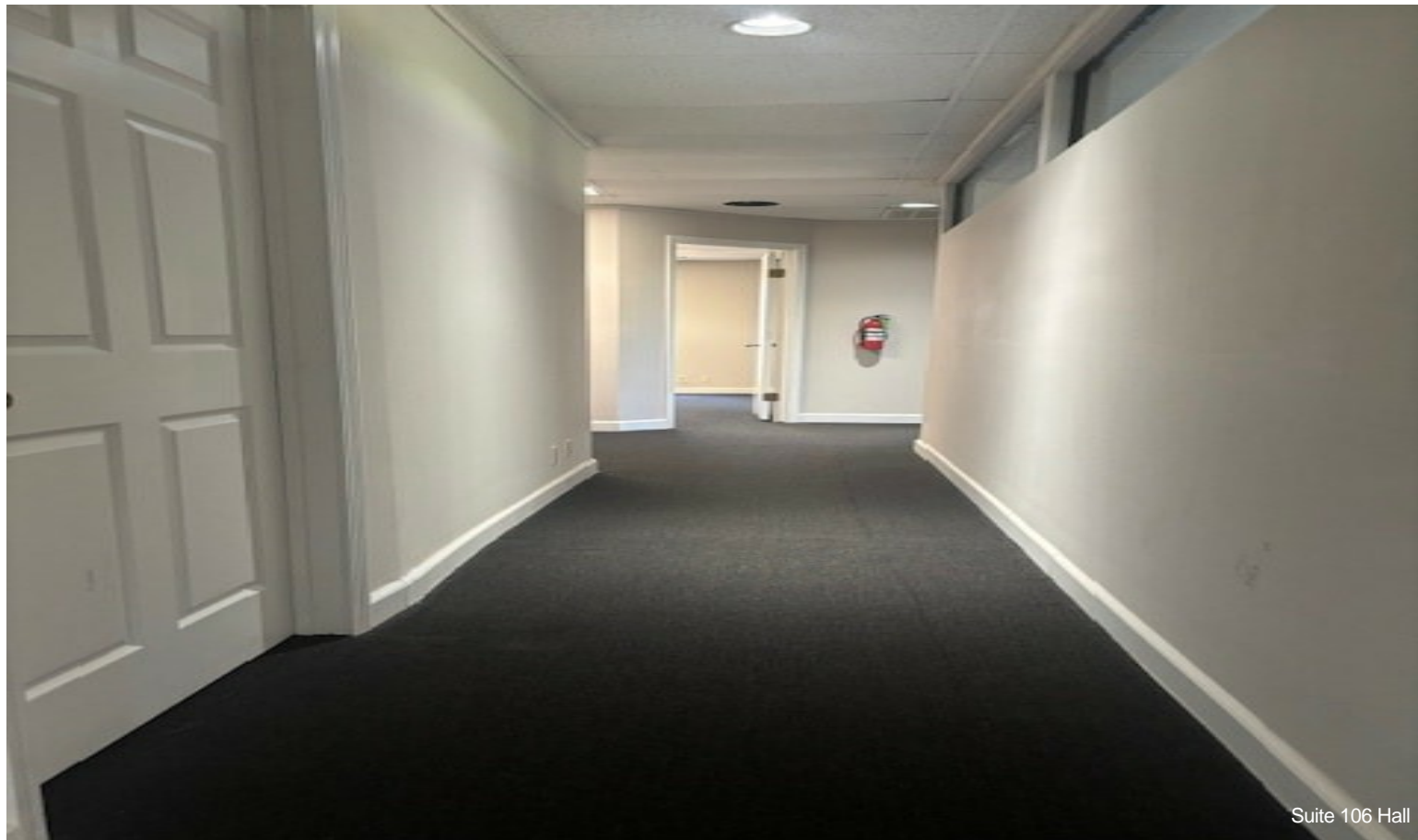


Suite 105 Office 2

Property Photos



Property Photos



Suite 106 Hall



Suite 106 Storage

Property Photos



Property Photos



Suite 106 Lg Office