

31175 KENDALL AVENUE
FRASER, MICHIGAN



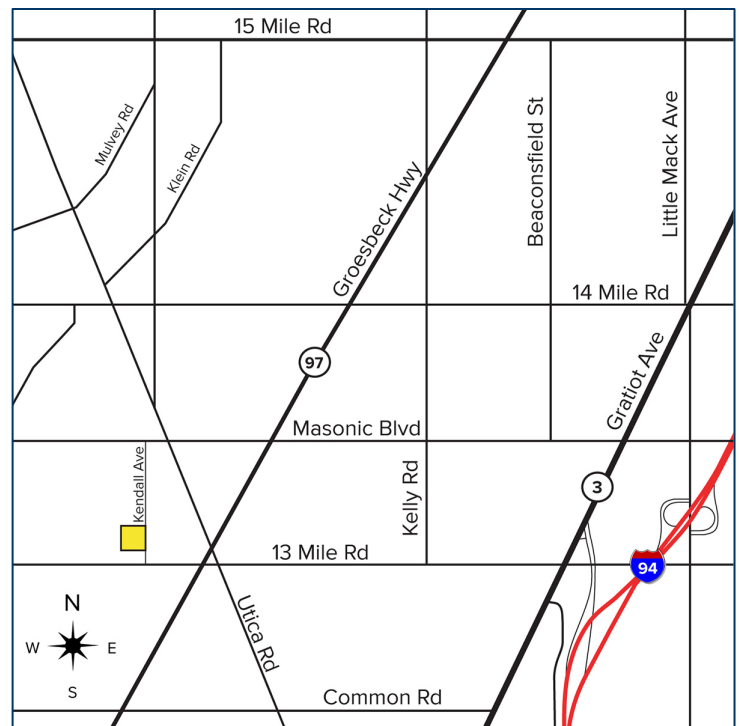
**SIGNATURE
ASSOCIATES**
KNOW SIGNATURE | KNOW RESULTS

INDUSTRIAL FOR LEASE
4,080 Square Feet Available



PROPERTY FEATURES

- 4,080 square feet available
- 400 square feet office
- 17' clear height
- (2) 12' x 14', 10' x 12' grade level doors
- 400 amps, 240 volts, can be upgraded
- 100% air-conditioned
- Immaculate food grade industrial facility
- Must see to appreciate
- Rare opportunity
- Lease Rate: \$9.95/sq. ft. NNN



For more information, please contact:

BEN WILKIEMEYER
(248) 359 0624
bwilkiemeyer@signatureassociates.com

PAUL SAAD
(248) 359 0652
psaad@signatureassociates.com

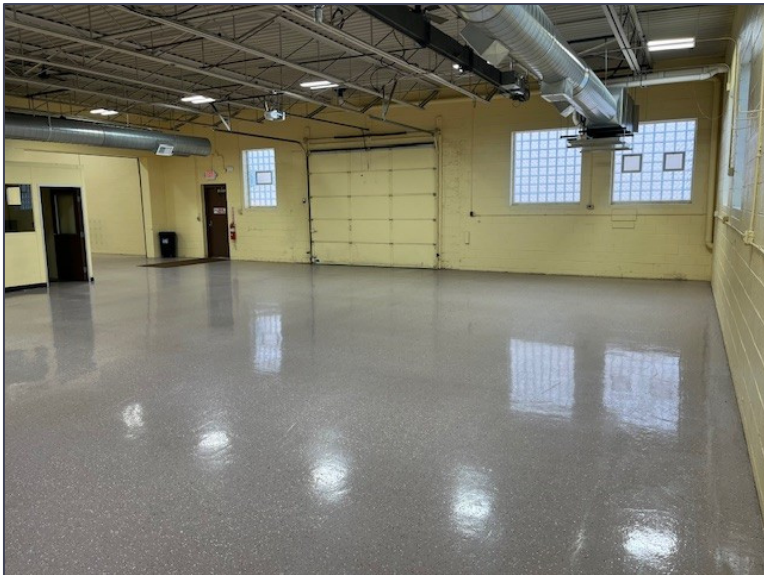
SIGNATURE ASSOCIATES
One Towne Square, Suite 1200
Southfield, MI 48076
www.signatureassociates.com

31175 Kendall Avenue – Fraser, Michigan

Industrial For Lease

4,080
Square Feet
AVAILABLE

Interior Photos



For more information, please contact:

BEN WILKIEMEYER

(248) 359 0624

bwilkiemeyer@signatureassociates.com

PAUL SAAD

(248) 359 0652

psaad@signatureassociates.com

SIGNATURE ASSOCIATES

One Towne Square, Suite 1200

Southfield, MI 48076

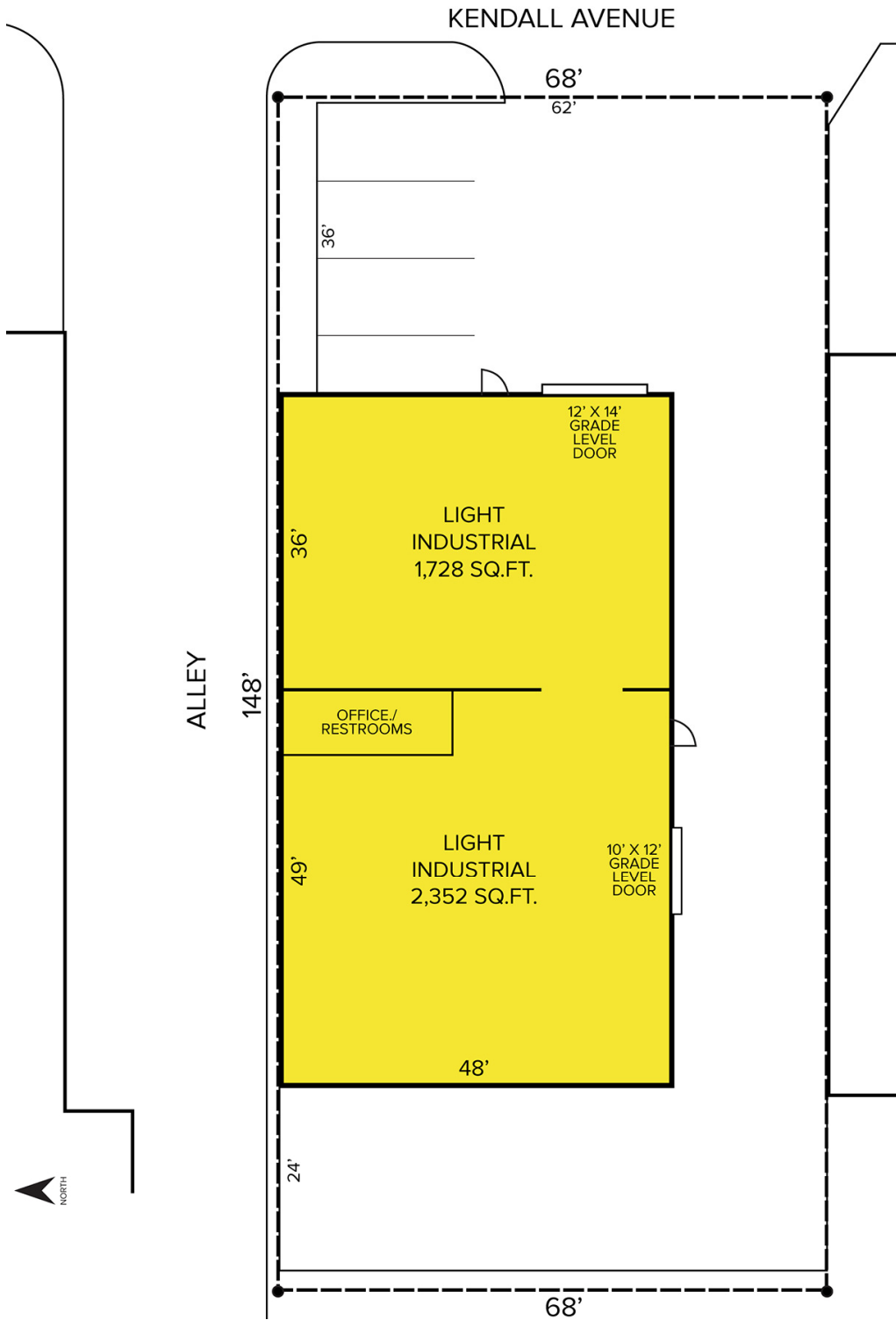
www.signatureassociates.com

31175 Kendall Avenue – Fraser, Michigan

Industrial For Lease

4,080
Square Feet
AVAILABLE

Site Plan



For more information, please contact:

BEN WILKIEMEYER

(248) 359 0624

bwilkiemeyer@signatureassociates.com

PAUL SAAD

(248) 359 0652

psaad@signatureassociates.com

SIGNATURE ASSOCIATES

One Towne Square, Suite 1200

Southfield, MI 48076

www.signatureassociates.com

31175 Kendall Avenue – Fraser, Michigan

Industrial For Lease

4,080
Square Feet
AVAILABLE

Aerial



For more information, please contact:

BEN WILKIEMEYER

(248) 359 0624

bwilkiemeyer@signatureassociates.com

PAUL SAAD

(248) 359 0652

psaad@signatureassociates.com

SIGNATURE ASSOCIATES

One Towne Square, Suite 1200

Southfield, MI 48076

www.signatureassociates.com