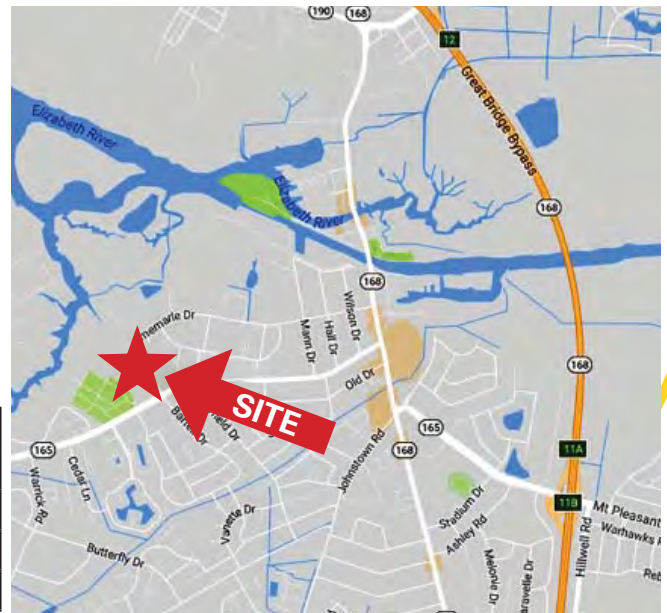


OFFICE SPACE FOR LEASE

516-A Albemarle Drive Chesapeake, VA



- ±1,533 SF Suite for Lease in Great Bridge
- Zoned O-I
- Blocks from Chesapeake City Hall
- Ample Parking
- 4 Private Offices
- 2 Bathrooms
- Lobby & Reception
- Break Room
- \$16.25 Net of Utilities & Janitorial



Demographics (2016)

	1 Mile	3 Miles	5 Miles
Population	7,621	59,208	121,044
Households	2,393	21,179	43,051
Ave. HH Inc.	\$89,469	\$98,663	\$95,425

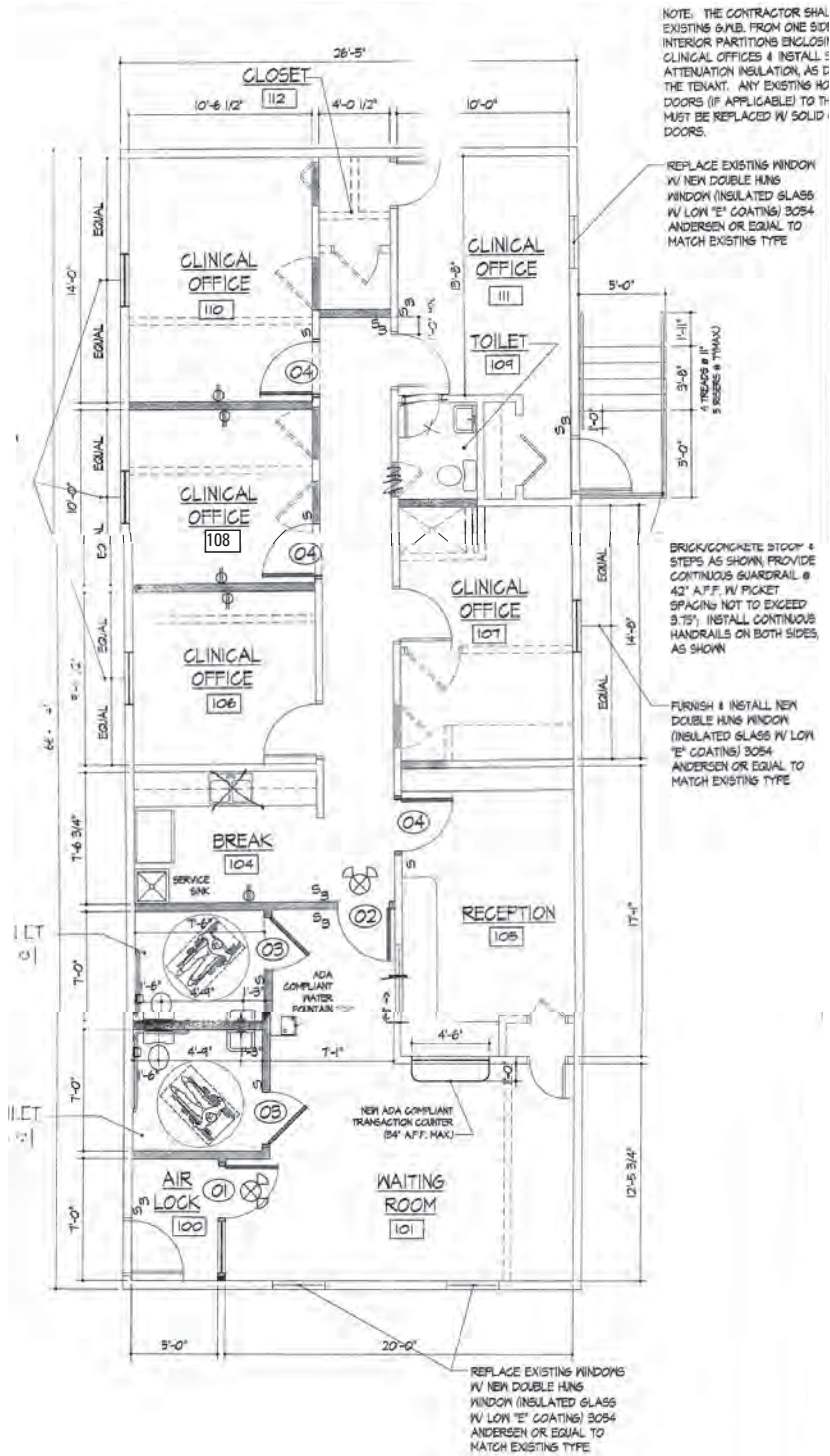
CONTACT:

JOSH FULTON
(757) 640-8214
joshfulton@harveylindsay.com

HARVEY LINDSAY
 COMMERCIAL REAL ESTATE

A Tradition of Forward Thinking

OFFICE SPACE FOR LEASE: 516-A Albemarle Drive, Chesapeake, VA



CONTACT: _____
JOSH FULTON
(757) 640-8214
joshfulton@harveylindsay.com

HARVEY LINDSAY
 COMMERCIAL REAL ESTATE
A Tradition of Forward Thinking

OFFICE SPACE FOR LEASE: 516-A Albemarle Drive, Chesapeake, VA



CONTACT: _____

JOSH FULTON

(757) 640-8214

joshfulton@harveylindsay.com

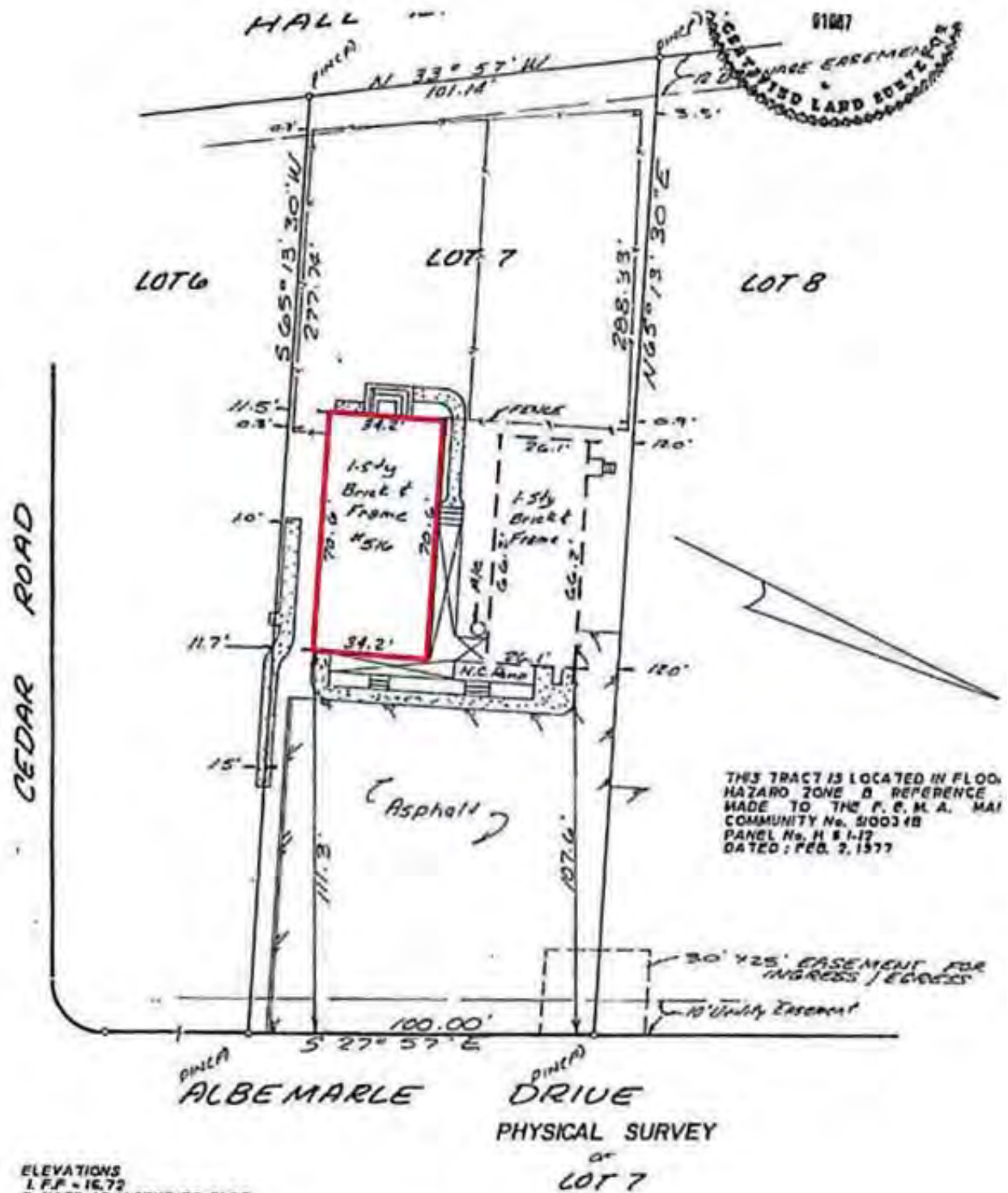
HARVEY LINDSAY

COMMERCIAL REAL ESTATE

A Tradition of Forward Thinking

The information contained herein has been obtained from sources believed to be reliable but is not warranted.
We cannot be responsible for errors, omissions, withdrawal, or prior lease or sale.

OFFICE SPACE FOR LEASE: 516-A Albemarle Drive, Chesapeake, VA



CONTACT: _____
JOSH FULTON
 (757) 640-8214
 joshfulton@harveylindsay.com

HARVEY LINDSAY
 COMMERCIAL REAL ESTATE
A Tradition of Forward Thinking

The information contained herein has been obtained from sources believed to be reliable but is not warranted. We cannot be responsible for errors, omissions, withdrawal, or prior lease or sale.