

**MAIN ADDRESS = 5559 S SOSSAMAN RD**

**101= SUITE NUMBER**

**1 = BUILDING NUMBER**

**CLARITY NOTE:**  
 FOR GRAPHIC CLARITY THE EMITTERS HAVE NOT BEEN SHOWN. VERIFY EMITTER COUNT WITH PLANT COUNT AND EMITTER SCHEDULE.  
 FOR GRAPHIC CLARITY THE SLEEVES HAVE NOT BEEN SHOWN. THE IRRIGATION CONTRACTOR IS RESPONSIBLE FOR ALL SLEEVES PER THE FOLLOWING SCHEDULE.

**SLEEVING SCHEDULE:**  
 WIRES 2" SCH. 40 PVC (QTY AS REQUIRED)  
 MAIN LINE 4" SCH. 40 PVC (OR DBL THE MAINLINE SIZE)  
 DRIP LATERAL 2" SCH. 40 PVC  
 TURF LATERAL 3" SCH. 40 PVC (OR DBL THE LATERAL LINE SIZE)

**EMITTER SCHEDULE**

PLANT SIZE	GA. PER HR.	EMITTER SIZE
36" BOX	6	(1) HUNTER MPE-20
24" BOX	4	(1) HUNTER MPE-20
15 GALLON	4	(1) HUNTER MPE-10
5 GALLON	1	(1) HUNTER HEB-10
1 GALLON	1	(1) HUNTER HEB-10

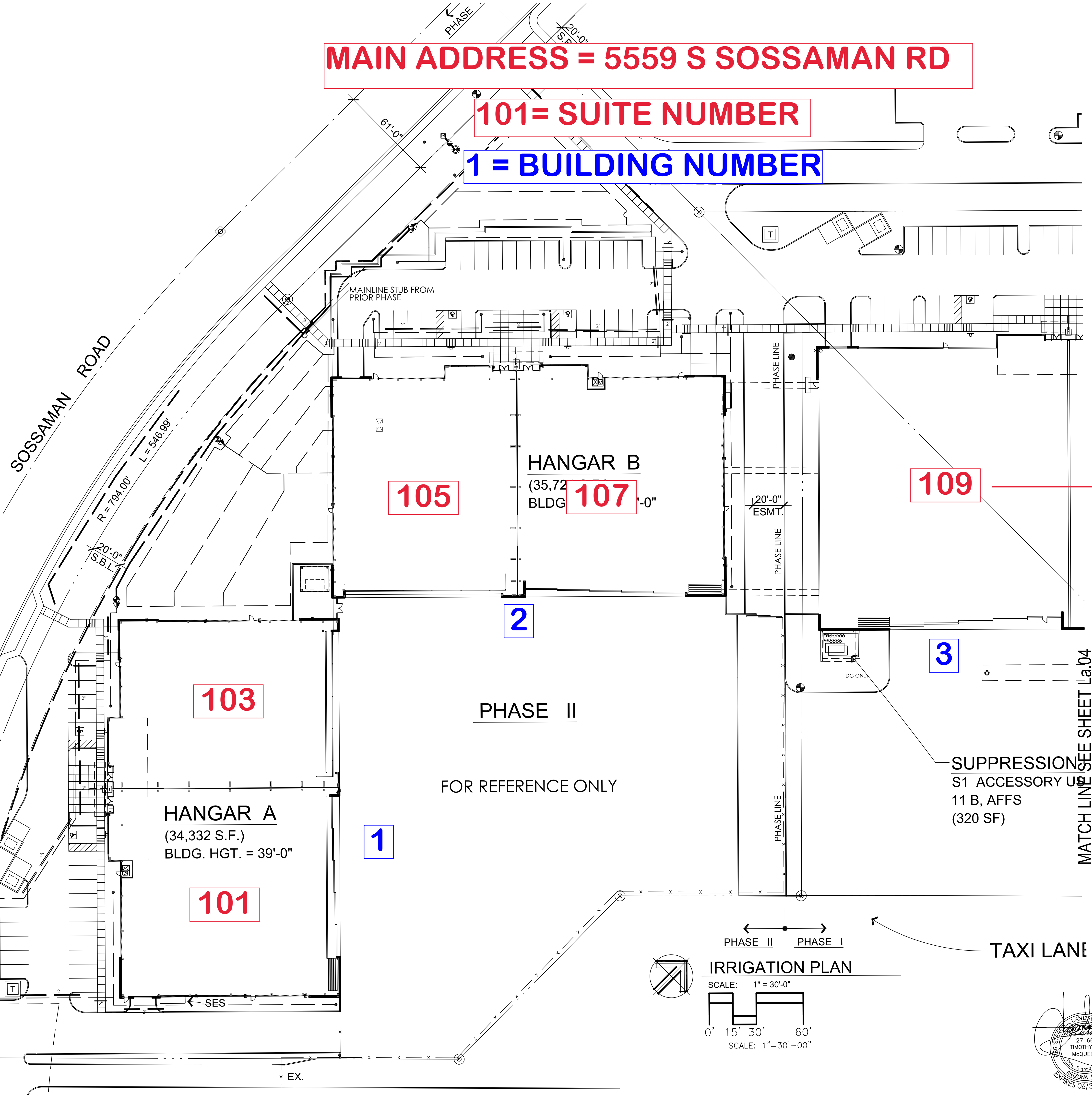
**NOTES:**  
 EMITTER SIZING AND QUANTITIES MAY VARY DEPENDING ON SOIL TYPE AND CLIMATE CONDITIONS. VERIFY PRIOR TO BID. ALL NON-METALLIC WATER AND IRRIGATION PIPING LARGER THAN 2" REQUIRE MIN. 18 AWG INSULATED COPPER TRACER WIRE SUITABLE FOR DIRECT BURIAL.  
 THE IRRIGATION CONTRACTOR MAY SUBSTITUTE (1) MULTI EMITTER FOR (6) SINGLE EMITTERS IN GROUND AREAS AS LONG AS DIST. TUBING DOES NOT EXCEED 5 FT.

**FOUNDATION NOTE:**  
 NO END CAPS ARE TO BE PLACED WITHIN 15' OF ANY FOUNDATION OR FOOTING. ADJUST LAYOUT AS REQUIRED.  
 NO HIGH WATER USE, OR HIGH FLOW PRODUCTS ARE TO BE USED WITHIN 15' OF ANY FOUNDATION OR FOOTING. THE IRRIGATION IS TO BE MONITORED ON A REGULAR BASIS TO AVOID SOIL SATURATION AROUND FOUNDATIONS AND FOOTINGS. THIS IRRIGATION PLAN IS DIAGRAMATIC ADJUST LAYOUT AS REQUIRED.

- IRRIGATION LEGEND**
- 115 GAPE METER
  - 1.5" R.P. ASSY. W/ GUARDSHACK CAGE PAINTED TO MATCH BUILDING
  - HUNTER ICV-(SIZE PER MAINLINE) MASTER VALVE. INSTALL IN VALVE BOX ADJACENT TO BACKFLOW
  - HUNTER DRIP CONTROL ZONE KIT  
 PCZ-101-25 (30gph to 600gph) (.5gpm to 10gpm)  
 ICZ-101-25 (601gph to 1,200gph) (10gpm to 20gpm)
  - HUNTER I-CORE-1C-600-M (MODULES AS REQUIRED)  
 6 STATION CONTROLLER (POWER PER GENERAL CONTRACTOR)
  - HUNTER HEB-10 (1/2" THREADED) PRESSURE COMP. SINGLE PORT EMITTER
  - HUNTER MPE-(SIZE PER SCHEDULE) (1/2" THREADED) PRESSURE COMP. MULTI PORT EMITTER
  - 1.5" MAINLINE (SCH40)
  - CLASS 200-3/4" DRIP LATERAL LINE
  - AG. PRODUCTS SELF FLUSHING ENDCAP (SEE FOUNDATION NOTE)
  - SCH 40 PVC SLEEVE (SEE SLEEVING SCHEDULE)

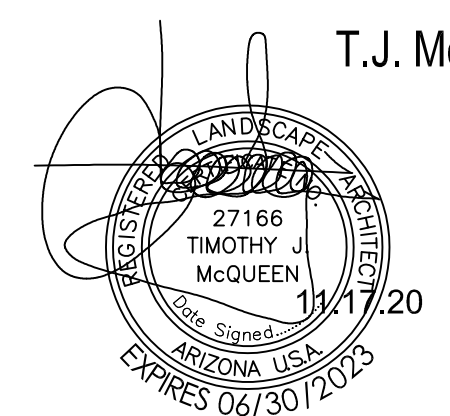
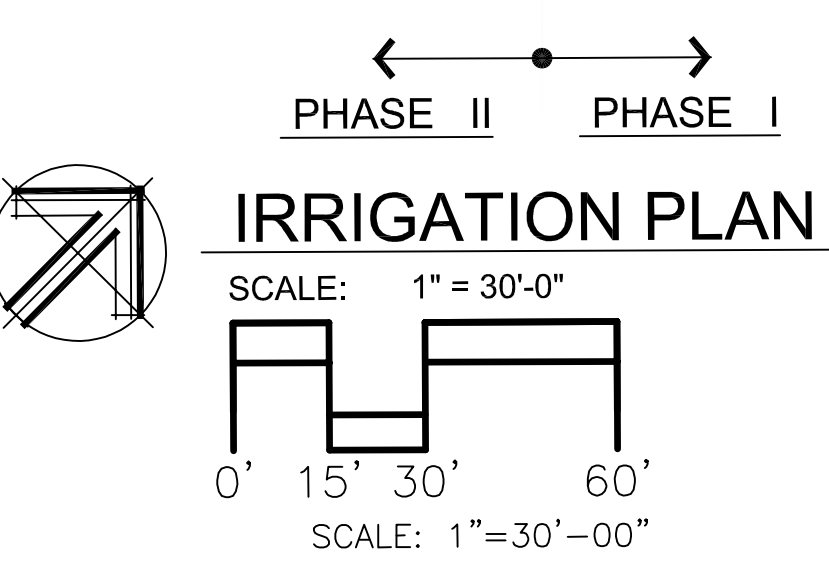
**PIPE SCHEDULE**

PIPE SIZE	GPM	PIPE CLASS
1/2"	0-5	315
3/4"	6-10	200
1"	11-15	200
1 1/4"	16-25	200
1 1/2"	26-35	200
2"	36-60	200



MATCH LINE SEE SHEET La.04

**SUPPRESSION**  
 S1 ACCESSORY U  
 11 B, AFFS  
 (320 SF)



**T.J. McQUEEN & ASSOCIATES, INC.**  
 LANDSCAPE ARCHITECTURE  
 URBAN DESIGN  
 SITE PLANNING  
 10450 N. 74th Street, Suite 120  
 Scottsdale, Arizona 85258  
 P. (602)265-0320  
 EMAIL: timmcqueen@tjmla.net



**winton architects, inc.**  
 1110 E. Missouri Ave., Suite 800, Phoenix, Arizona 85014  
 (602) 230-9778

**GATEWAY EXECUTIVE AIRPARK PHASE II**  
 5559 S. SOSSAMAN RD.  
 MESA, ARIZONA  
 SUN STATE BUILDERS

job no. 19116  
 drawn MGO  
 approved RBW  
 date 12.15.19

revisions  
**La.02**