

1
A002

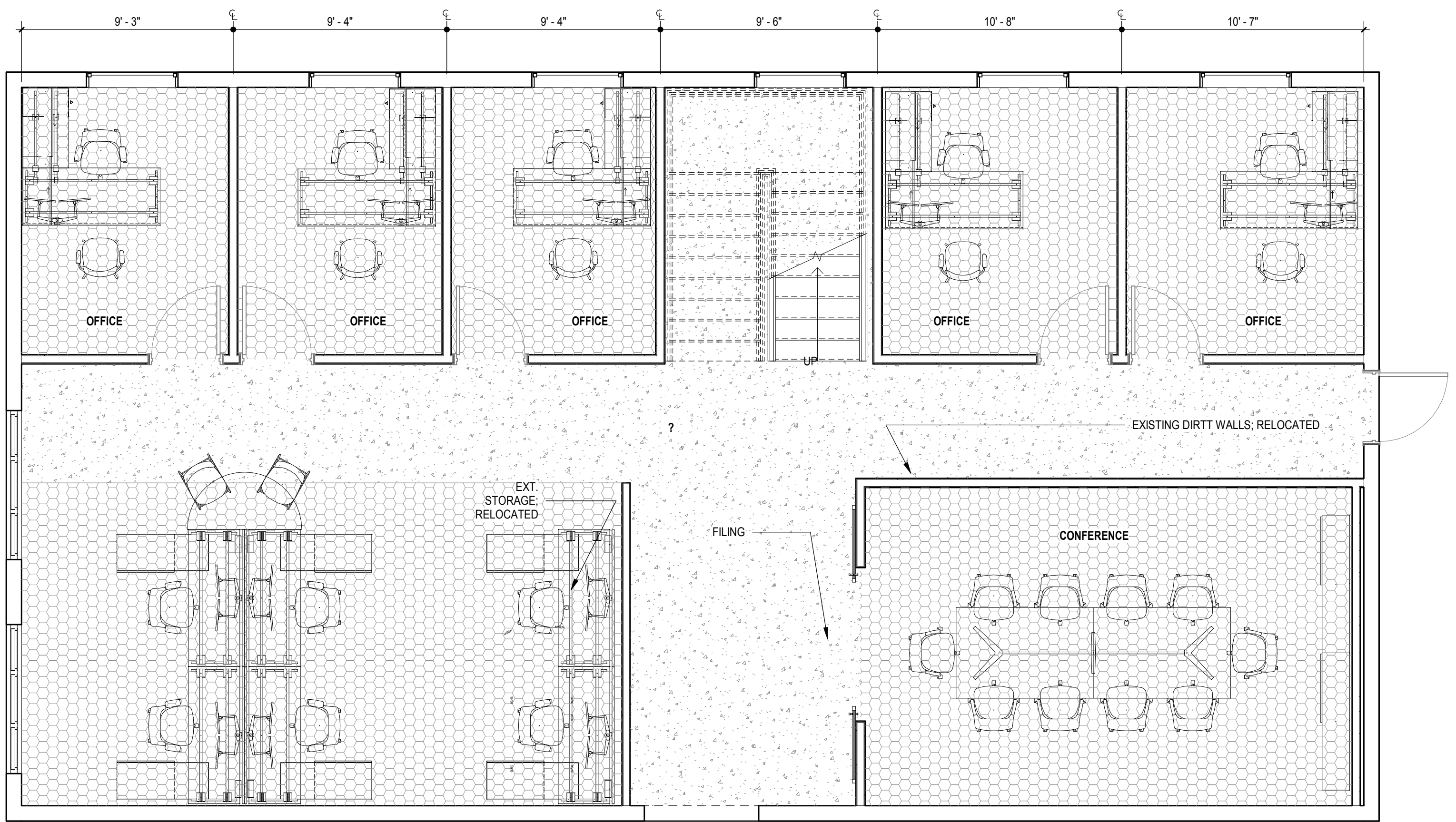
LEVEL 2 - EXPANSION

1/4" = 1'-0"



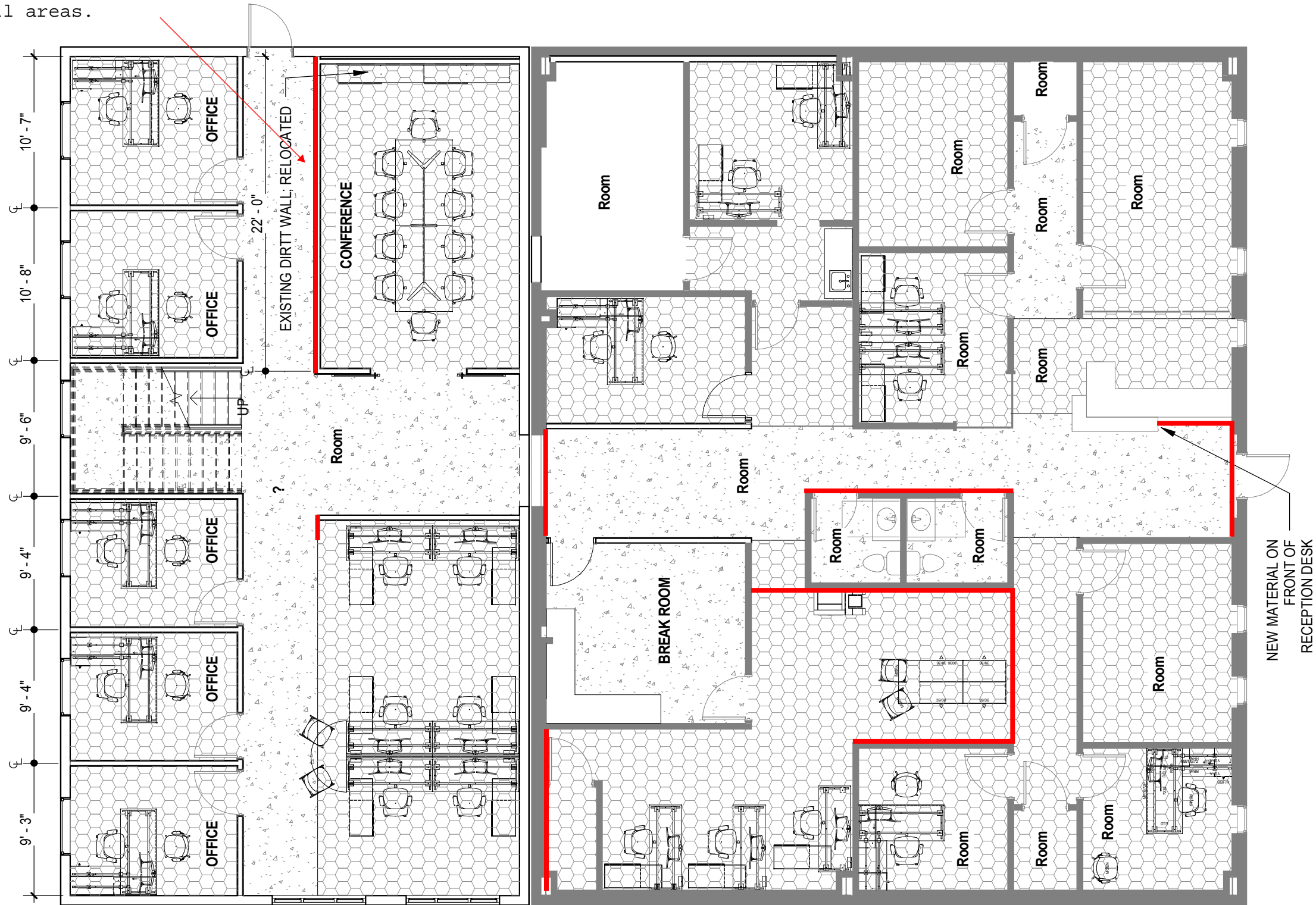
FRAMPTON CONSTRUCTION OFFICE
LADSON, SC
07/25/17

2ND FLOOR - EXPANSION



1 LEVEL 1 - EXPANSION
A005 1/4" = 1'-0"

There are a couple areas in between the word wall that were touched up on drywall that need to be painted. Not the whole wall just a couple small areas.



NEW MATERIAL ON FRONT OF RECEPTION DESK

LEVEL 1 - EXISTING AND EXPANSION

1/8" = 1'-0"

