

FOR SALE

±22,176 SF

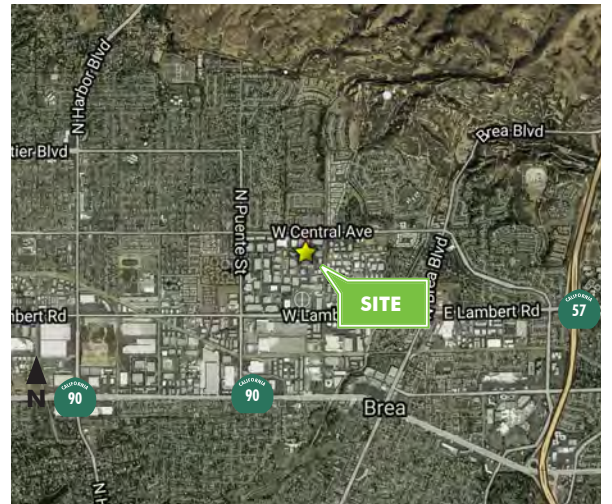
700

COLUMBIA STREET  
Brea, CA



## BUILDING HIGHLIGHTS

- + Free Standing Industrial Building
- + Total Size: ±22,176 SF
- + Office Size: ±3,000 SF
- + Parcel Size: ±1.2 Acres
- + Dock High and Grade Level Loading
- + Small Fenced Yard
- + Power: 2500 Amps (verify)
- + Minimum Clear Height: 19'
- + Fully Fire Sprinklered
- + Parking Ratio: 2:1



## CONTACT US

### KEITH GREER

+1 714 371 9209  
keith.greer@cbre.com  
Lic. 01899022

### SEAN WARD

+1 714 371 9222  
sean.ward@cbre.com  
Lic. 01415499

### BEN SEYBOLD

+1 714 371 9233  
ben.seybold@cbre.com  
Lic. 01081310

[www.cbre.com](http://www.cbre.com)

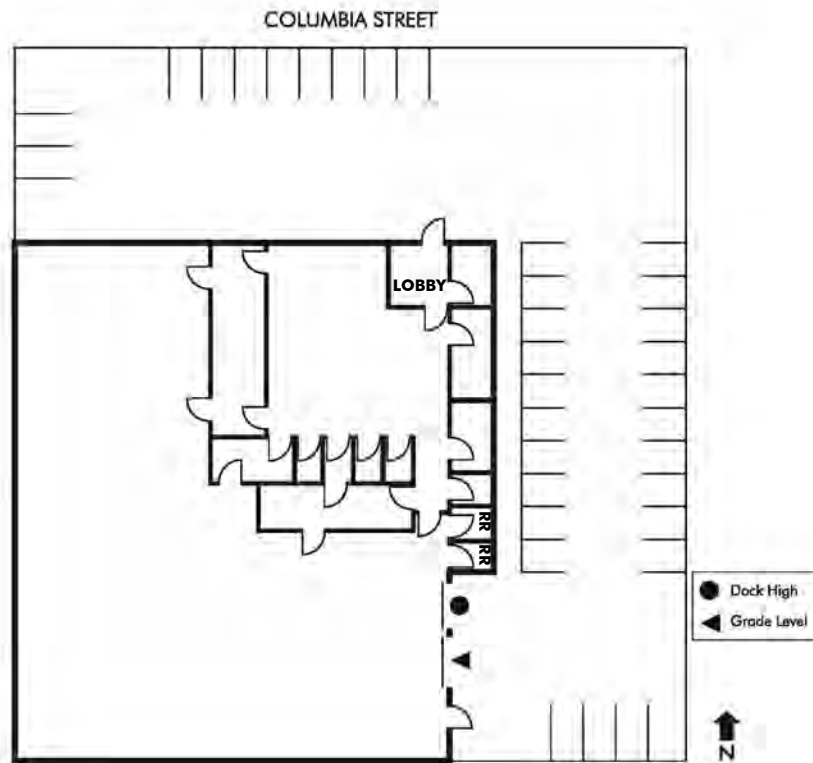
**CBRE**

FOR SALE  
**±22,176 SF**

**700**  
**COLUMBIA STREET**  
Brea, CA



**SITE PLAN**



© 2018 CBRE, Inc. This information has been obtained from sources believed reliable. We have not verified it and make no guarantee, warranty or representation about it. Any projections, opinions, assumptions or estimates used are for example only and do not represent the current or future performance of the property. You and your advisors should conduct a careful, independent investigation of the property to determine to your satisfaction the suitability of the property for your needs. CBRE and the CBRE logo are service marks of CBRE, Inc. and/or its affiliated or related companies in the United States and other countries. All other marks displayed on this document are the property of their respective owners. 700 Columbia St\_Brochure\_VA

[www.cbre.com](http://www.cbre.com)

**CBRE**