

EXCITING RETAIL
& LEISURE OFFER
FOR SUTTON

Retail & restaurant units to let
from 1,076 sq ft to 6,735 sq ft

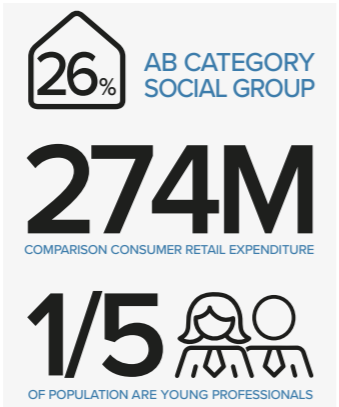


SUTTON
POINT
L O N D O N



THE DEVELOPMENT

Sophisticated urban living, working and shopping has arrived in Sutton, with an exciting new quarter being built at the heart of the town. Comprising three beautifully designed towers, Sutton point will become a landmark of the area, comprising 332 private apartment and 21,300 sq ft of retail and leisure space.



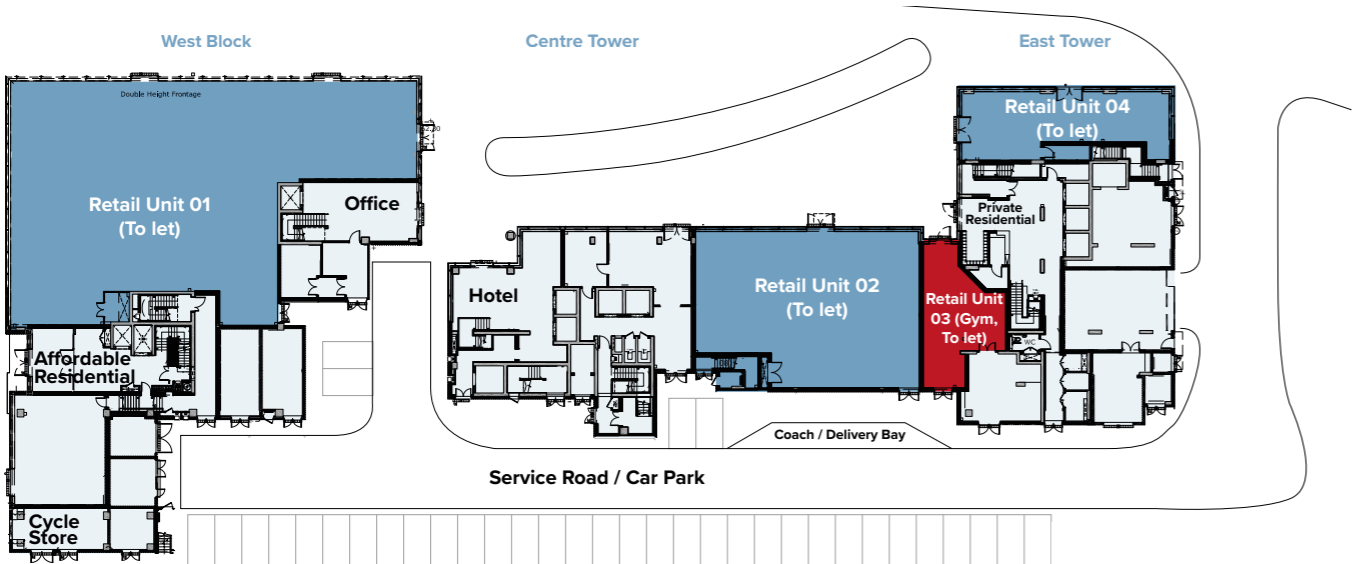
WEST TOWER

Handover
September 2018

EAST TOWER

Handover
September 2018

GROUND FLOOR



TOURISM

Sutton Point also includes 59 Serviced Apartments and a 112 bedroom hotel. This will not only encourage more visitors but create a hub for tourists coming to the area.

THE CONNECTIONS

Sutton Point is beautifully positioned at the southern end of the town – right next to the station with easy access to London Victoria (25 minutes) and London Bridge (44 minutes).

The site is also well served by the A3, A23 and A24, and with the M25 only five miles away, you can be at Gatwick Airport in under half an hour.

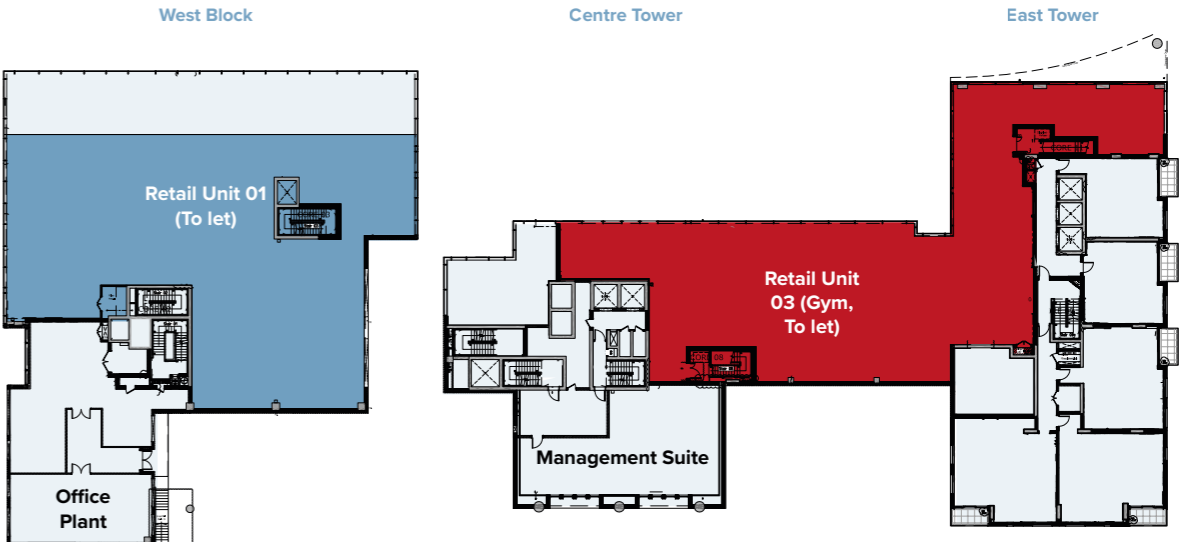
THE GREEN SPACES

Sutton is one of London's most up-and-coming areas. Residents enjoy 607 hectares of green space. It is the perfect place to take advantage of all the countryside has to offer, while still having the benefits of central London on your doorstep.



Retail Unit 1:	626 m2	6,735 sq ft
Retail Unit 2:	264 m2	2,840 sq ft
Health & Fitness (Unit 3, First Floor):	626 m2	6,735 sq ft
Retail Unit 4:	100 m2	1,076 sq ft

FIRST FLOOR



LOCAL AMENITIES

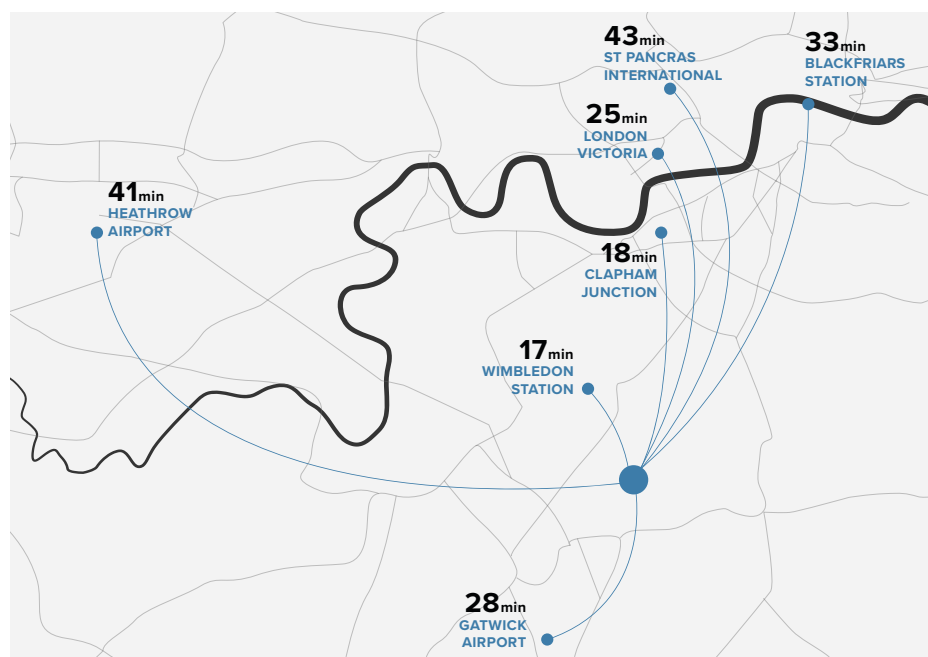
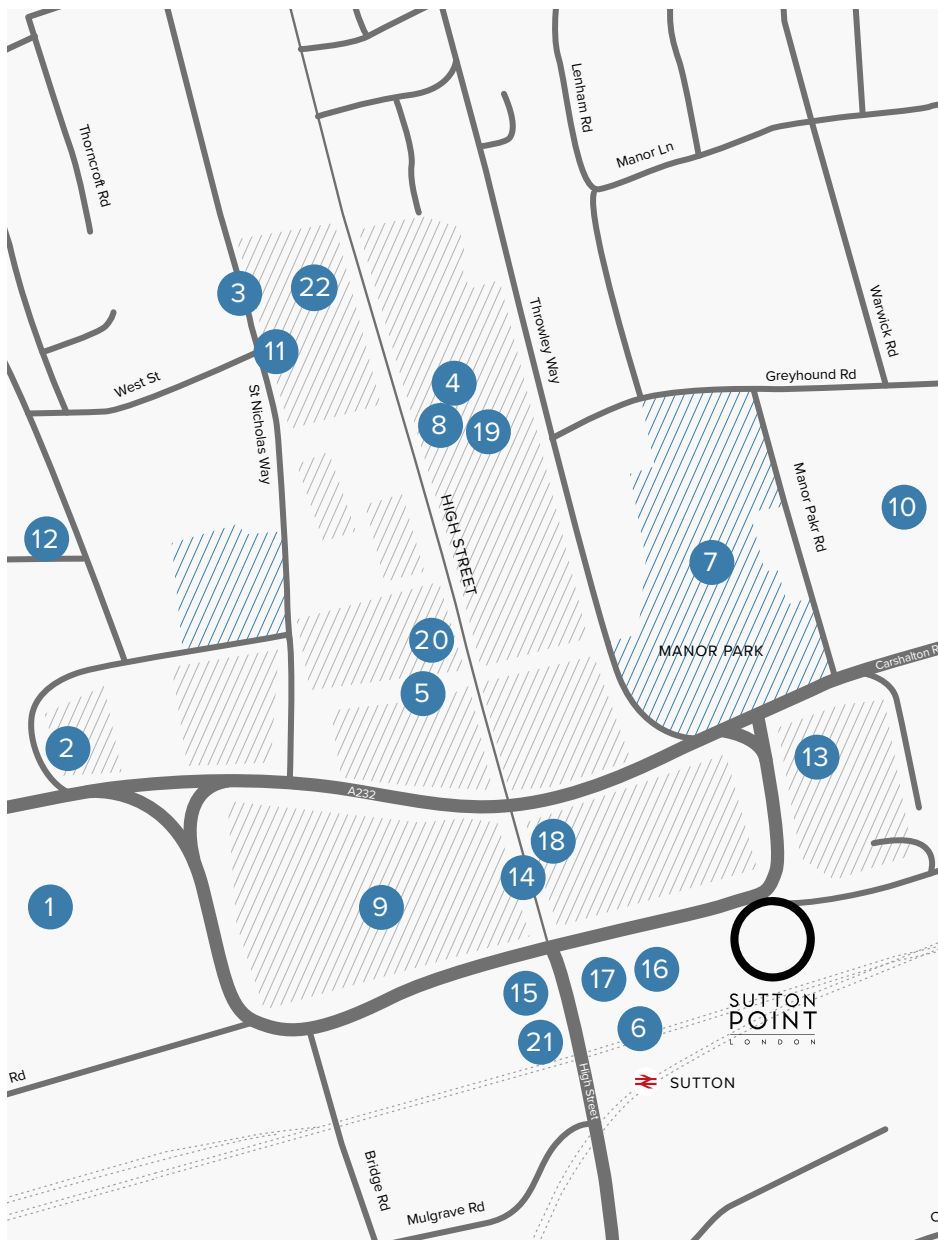
1. Sutton High School
2. Holiday Inn London
3. Empire Cinema
4. Times Square Shopping Centre
5. All Bar One
6. The Old Bank
7. Manor Park
8. Patisserie Valerie
9. Morrisons
10. Manor Park Primary School
11. The Perfume Shop
12. Robin Hood Lane Health Centre
13. B&Q
14. UNO Tapas
15. Marks and Spencer
16. Brasserie Vacherin
17. Casa Nostra
18. Café Nero
19. Debenhams
20. Waterstones
21. Nando's
22. St. Nicholas Shopping Centre

Train minutes

Wimbledon Station (District Line)	17
Clapham Junction (7 min to Waterloo)	18
London Victoria	25
London Blackfriars	33
St Pancras International	43
London Bridge	44

Drive

Gatwick Airport	28
Heathrow Airport	41



CONTACT

CHRIS HOVINGTON

chris.hovington@gcw.co.uk

Phone : 0207 647 4805

PHILIPPE MICHAEL

philippe.michael@gcw.co.uk

Phone : 0207 647 4815



Carrigmay Sutton (Jersey), CNM Estates & GCW for themselves and for the Vendors of the property whose Agents they are, give notice that:-
i. The particulars are set out as a general outline only for the guidance of intending purchasers and do not constitute, nor constitute part of, an offer or contract; ii. All descriptions, dimensions, references to condition and necessary permissions for use and occupation and other details are given in good faith and are believed to be correct, but any intending purchaser should not rely on them as statements or representations of fact and must satisfy themselves by inspection or otherwise as to the correctness of each of them; iii. No person in the employment of Carrigmay Sutton (Jersey), CNM Estates & GCW has any authority to make or give any representations or warranty whatever in relation to this property or the particulars, nor enter into any contract relating to the property on behalf of Carrigmay Sutton (Jersey), CNM Estates & GCW nor any contract on behalf of the vendors; iv. No responsibility can be accepted for any expenses incurred by intending purchasers in inspecting properties which have been sold or withdrawn.