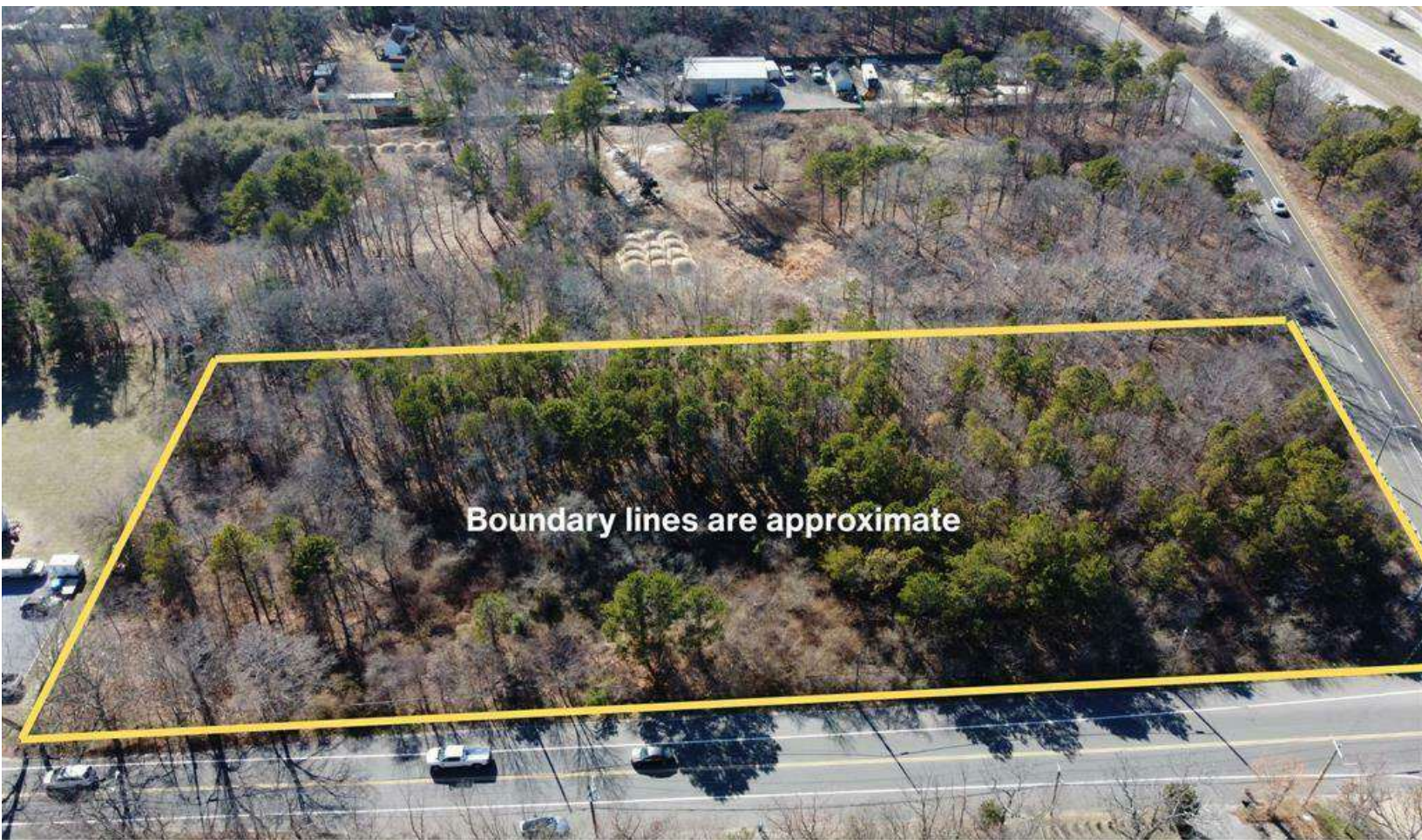


Property For Sale

Bellport Avenue, Medford, New York 11763, Suffolk County

0 Bellport Ave Medford Ave, NY 11763



Boundary lines are approximate



For More Information:

Devang Patel

Licensed Real Estate Salesperson
Douglas Elliman Commercial - Long Island
631.220.2860
devang.patel@elliman.com

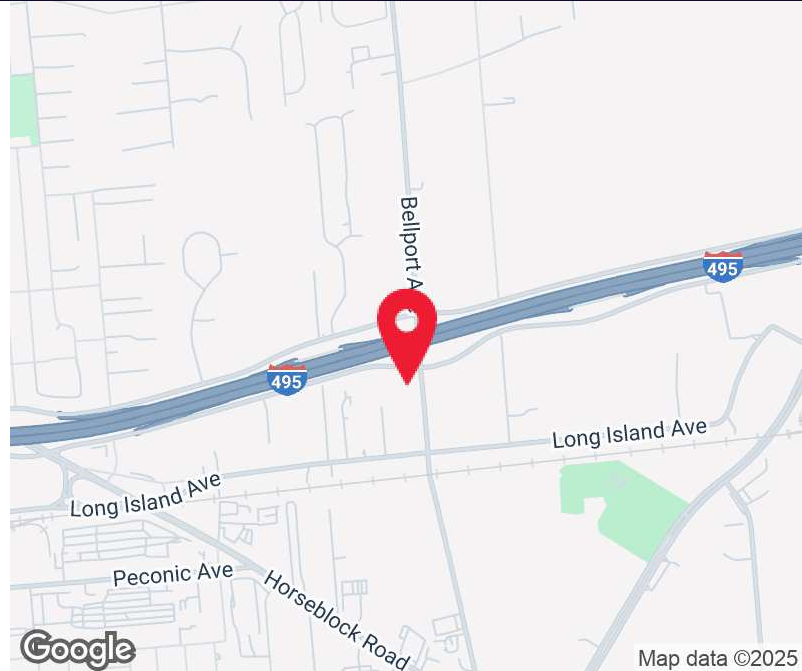
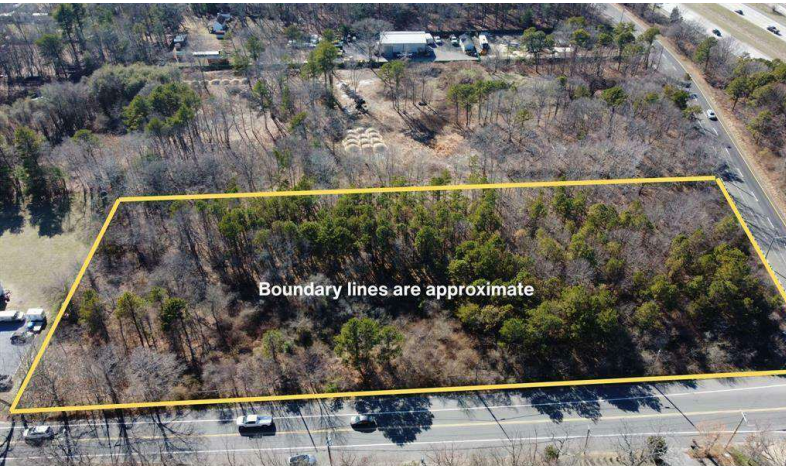
WWW.ELLIMANCOMMERCIAL.COM

THE PROPERTY CONTAINED WITHIN THIS DOCUMENT IS BEING EXCLUSIVELY REPRESENTED BY DOUGLAS ELLIMAN REAL ESTATE COMMERCIAL DIVISION, 650 SMITHTOWN BYPASS STE. 117 SMITHTOWN, NY 11787 631 868-2405 © 2023 DOUGLAS ELLIMAN COMMERCIAL OF LI, LLC. ALL MATERIAL PRESENTED HEREIN IS INTENDED FOR INFORMATION PURPOSES ONLY. WHILE THIS INFORMATION IS BELIEVED TO BE CORRECT, IT IS REPRESENTED SUBJECT TO ERRORS, OMISSIONS, CHANGES OR WITHDRAWAL WITHOUT NOTICE. ALL PROPERTY INFORMATION, INCLUDING, BUT NOT LIMITED TO SQUARE FOOTAGE, ROOM COUNT, ZONING IN THE LISTING SHOULD BE VERIFIED BY YOUR OWN ATTORNEY, ARCHITECT OR ZONING EXPERT. IF YOUR PROPERTY IS CURRENTLY LISTED WITH ANOTHER REAL ESTATE BROKER, PLEASE DISREGARD THIS OFFER. IT IS NOT OUR INTENTION TO SOLICIT THE OFFERINGS OF OTHER REAL ESTATE BROKERS. WE COOPERATE WITH THEM FULLY. EQUAL HOUSING OPPORTUNITY.



Commercial Property For Sale

0 Bellport Ave Medford Ave, NY 11763



Offering Summary	
Sale Price:	\$2,000,000
Available SF:	136778.4
Lot Size:	3.14 Acres
Price / Acre:	\$636,943
Zoning:	AA

Property Overview

Introducing an exceptional investment opportunity in the sought-after Medford Ave area. This prime property, zoned AA, presents a lucrative prospect for the discerning residential investor or a change of use for commercial investor subject to zoning change. Boasting a desirable location. With its coveted zoning and position in the vibrant Medford Ave area, this parcel of land is a rare find for those seeking to capitalize on the flourishing real estate market. Don't miss the chance to make this property the cornerstone of your next residential investment venture.

Property Highlights

- 3.14 acres
- Corner Property
- Intersection of Bellport Ave and Long Island Expressway south servide road

For More Information:

Devang Patel

Licensed Real Estate Salesperson
 Douglas Elliman Commercial - Long Island
 Licensed Real Estate Salesperson
 631.220.2860
 devang.patel@elliman.com

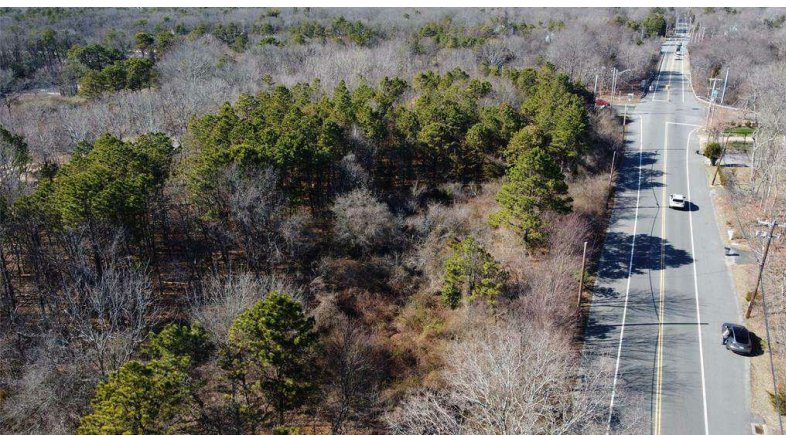
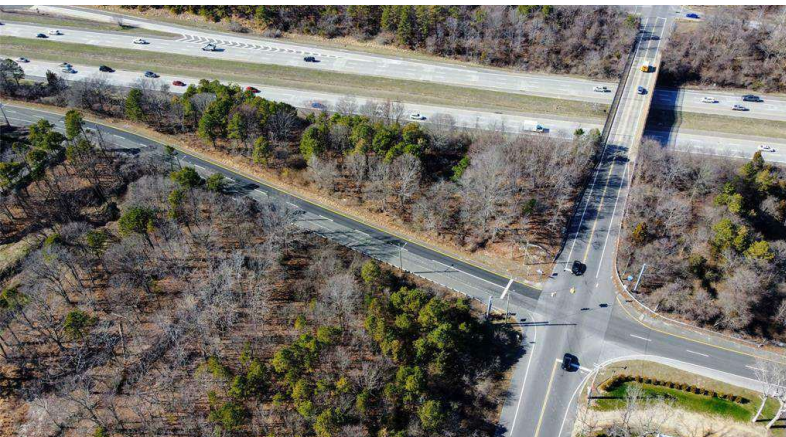


WWW.ELLIMANCOMMERCIAL.COM



Commercial Property For Sale

0 Bellport Ave Medford Ave, NY 11763



For More Information:

Devang Patel

Licensed Real Estate Salesperson
Douglas Elliman Commercial - Long Island
Licensed Real Estate Salesperson
631.220.2860
devang.patel@elliman.com



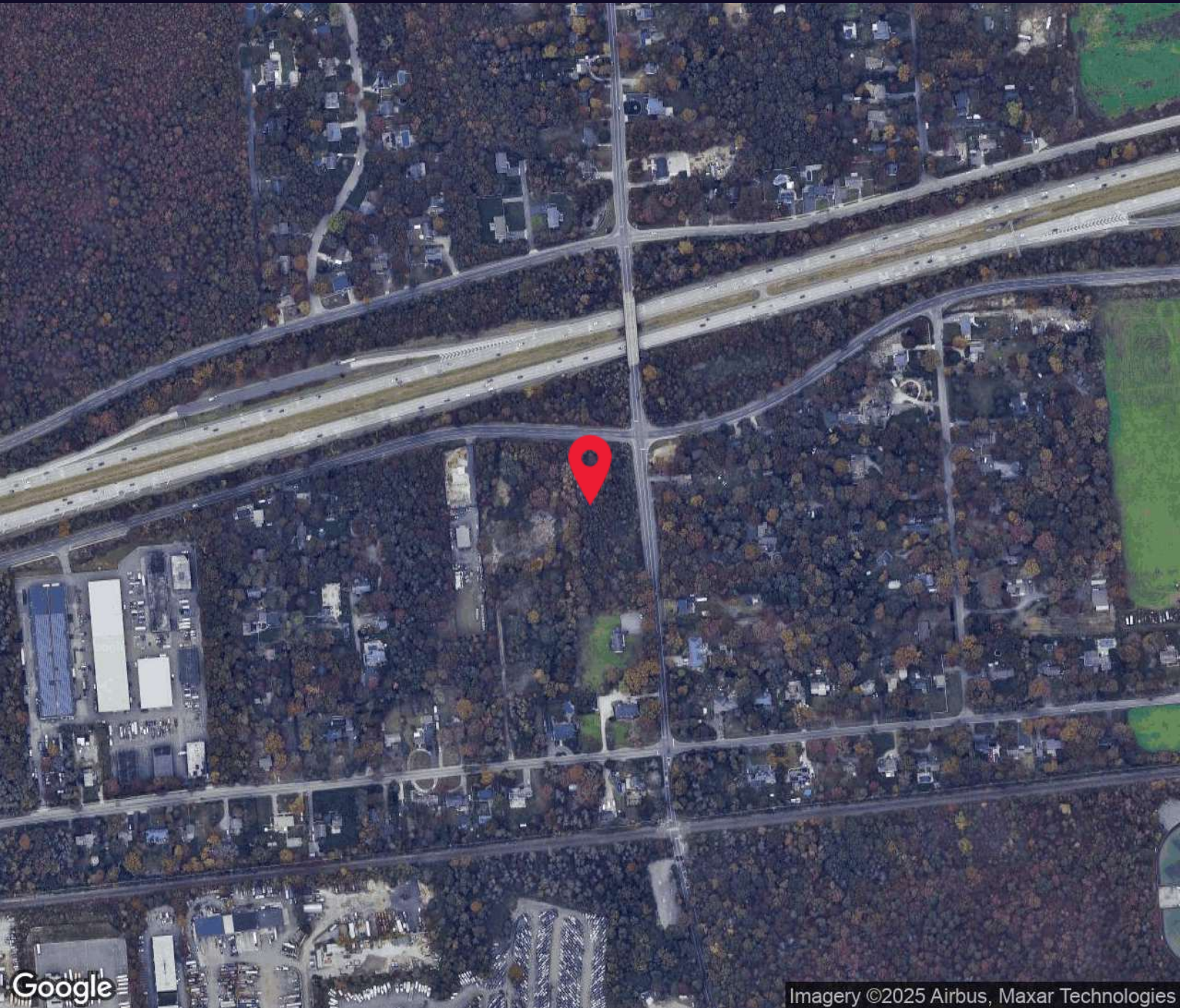
WWW.ELLIMANCOMMERCIAL.COM

THE PROPERTY CONTAINED WITHIN THIS DOCUMENT IS BEING EXCLUSIVELY REPRESENTED BY DOUGLAS ELLIMAN REAL ESTATE COMMERCIAL DIVISION, 550 SMITHTOWN BYPASS STE. 117 SMITHTOWN, NY 11787 631.858.2405 © 2023 DOUGLAS ELLIMAN COMMERCIAL OF L.L.C. ALL MATERIAL PRESENTED HEREIN IS INTENDED FOR INFORMATION PURPOSES ONLY. WHILE THIS INFORMATION IS BELIEVED TO BE CORRECT, IT IS REPRESENTED SUBJECT TO ERRORS, OMISSIONS, CHANGES OR WITHDRAWAL WITHOUT NOTICE. ALL PROPERTY INFORMATION, INCLUDING, BUT NOT LIMITED TO SQUARE FOOTAGE, ROOM COUNT, ZONING IN THE LISTING SHOULD BE VERIFIED BY YOUR OWN ATTORNEY, ARCHITECT OR ZONING EXPERT. IF YOUR PROPERTY IS CURRENTLY LISTED WITH ANOTHER REAL ESTATE BROKER, PLEASE DISREGARD THIS OFFER. IT IS NOT OUR INTENTION TO SOLICIT THE OFFERINGS OF OTHER



Commercial Property For Sale

0 Bellport Ave Medford Ave, NY 11763



Imagery ©2025 Airbus, Maxar Technologies

For More Information:

Devang Patel

Licensed Real Estate Salesperson
Douglas Elliman Commercial - Long Island
Licensed Real Estate Salesperson
631.220.2860
devang.patel@elliman.com



WWW.ELLIMANCOMMERCIAL.COM

THE PROPERTY CONTAINED WITHIN THIS DOCUMENT IS BEING EXCLUSIVELY REPRESENTED BY DOUGLAS ELLIMAN REAL ESTATE COMMERCIAL DIVISION, 550 SMITHTOWN BYPASS STE. 117 SMITHTOWN, NY 11787 631.858.2405 © 2023 DOUGLAS ELLIMAN COMMERCIAL OF LI, L.L.C. ALL MATERIAL PRESENTED HEREIN IS INTENDED FOR INFORMATION PURPOSES ONLY. WHILE THIS INFORMATION IS BELIEVED TO BE CORRECT, IT IS REPRESENTED SUBJECT TO ERRORS, OMISSIONS, CHANGES OR WITHDRAWAL WITHOUT NOTICE. ALL PROPERTY INFORMATION, INCLUDING, BUT NOT LIMITED TO SQUARE FOOTAGE, ROOM COUNT, ZONING IN THE LISTING SHOULD BE VERIFIED BY YOUR OWN ATTORNEY, ARCHITECT OR ZONING EXPERT. IF YOUR PROPERTY IS CURRENTLY LISTED WITH ANOTHER REAL ESTATE BROKER, PLEASE DISREGARD THIS OFFER. IT IS NOT OUR INTENTION TO SOLICIT THE OFFERINGS OF OTHER



Commercial Property For Sale

0 Bellport Ave Medford Ave, NY 11763



For More Information:

Devang Patel

Licensed Real Estate Salesperson
Douglas Elliman Commercial - Long Island
Licensed Real Estate Salesperson
631.220.2860
devang.patel@elliman.com



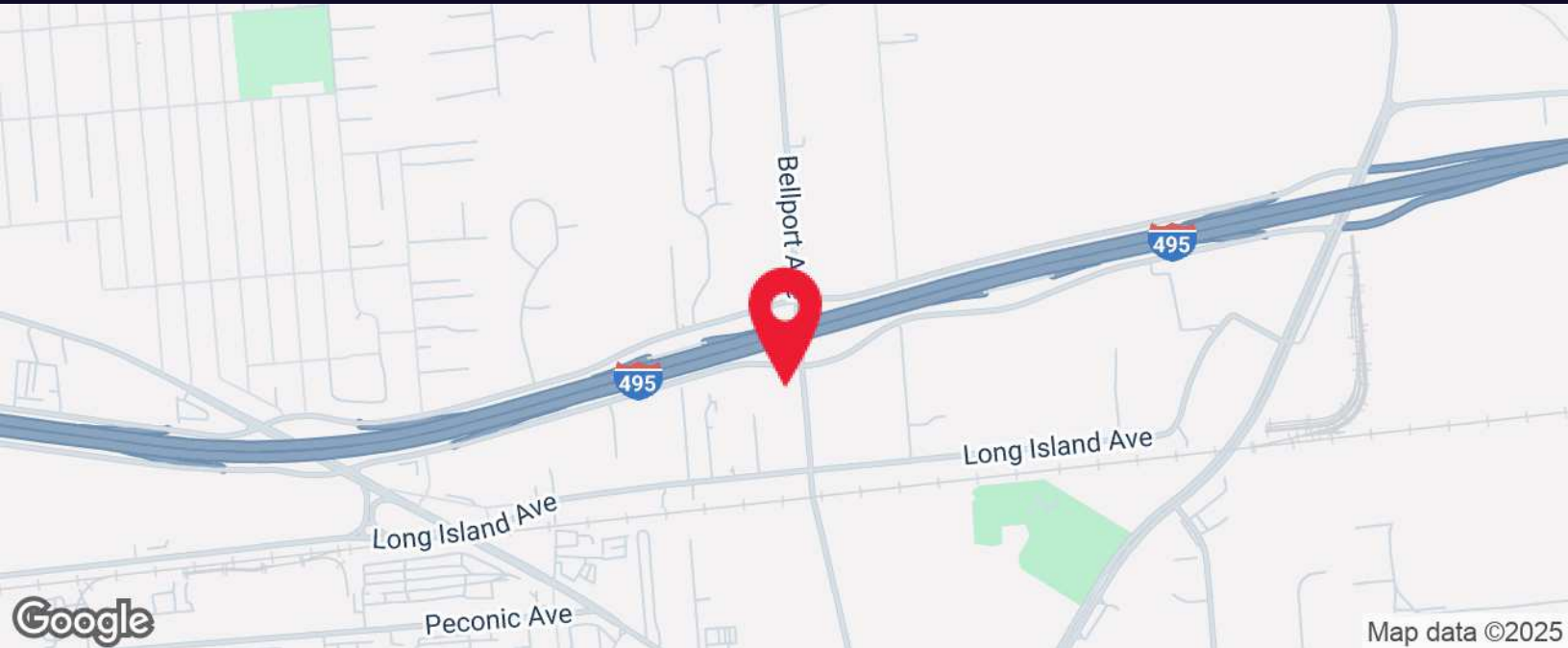
WWW.ELLIMANCOMMERCIAL.COM

THE PROPERTY CONTAINED WITHIN THIS DOCUMENT IS BEING EXCLUSIVELY REPRESENTED BY DOUGLAS ELLIMAN REAL ESTATE COMMERCIAL DIVISION, 650 SMITHTOWN BYPASS STE. 117 SMITHTOWN, NY 11787 631.858.2495 © 2023 DOUGLAS ELLIMAN COMMERCIAL OF LI, L.L.C. ALL MATERIAL PRESENTED HEREIN IS INTENDED FOR INFORMATION PURPOSES ONLY. WHILE THIS INFORMATION IS BELIEVED TO BE CORRECT, IT IS REPRESENTED SUBJECT TO ERRORS, OMISSIONS, CHANGES OR WITHDRAWAL WITHOUT NOTICE. ALL PROPERTY INFORMATION, INCLUDING, BUT NOT LIMITED TO SQUARE FOOTAGE, ROOM COUNT, ZONING IN THE LISTING SHOULD BE VERIFIED BY YOUR OWN ATTORNEY, ARCHITECT OR ZONING EXPERT. IF YOUR PROPERTY IS CURRENTLY LISTED WITH ANOTHER REAL ESTATE BROKER, PLEASE DISREGARD THIS OFFER. IT IS NOT OUR INTENTION TO SOLICIT THE OFFERINGS OF OTHER



Commercial Property For Sale

0 Bellport Ave Medford Ave, NY 11763



Demographics data derived from AlphaMap

For More Information:

Devang Patel

Licensed Real Estate Salesperson
Douglas Elliman Commercial - Long Island
Licensed Real Estate Salesperson
631.220.2860
devang.patel@elliman.com



WWW.ELLIMANCOMMERCIAL.COM

THE PROPERTY CONTAINED WITHIN THIS DOCUMENT IS BEING EXCLUSIVELY REPRESENTED BY DOUGLAS ELLIMAN REAL ESTATE COMMERCIAL DIVISION, 550 SMITHTOWN BYPASS STE. 117 SMITHTOWN, NY 11787 631.858.2405 © 2023 DOUGLAS ELLIMAN COMMERCIAL OF LI, L.L.C. ALL MATERIAL PRESENTED HEREIN IS INTENDED FOR INFORMATION PURPOSES ONLY. WHILE THIS INFORMATION IS BELIEVED TO BE CORRECT, IT IS REPRESENTED SUBJECT TO ERRORS, OMISSIONS, CHANGES OR WITHDRAWAL WITHOUT NOTICE. ALL PROPERTY INFORMATION, INCLUDING, BUT NOT LIMITED TO SQUARE FOOTAGE, ROOM COUNT, ZONING IN THE LISTING SHOULD BE VERIFIED BY YOUR OWN ATTORNEY, ARCHITECT OR ZONING EXPERT. IF YOUR PROPERTY IS CURRENTLY LISTED WITH ANOTHER REAL ESTATE BROKER, PLEASE DISREGARD THIS OFFER. IT IS NOT OUR INTENTION TO SOLICIT THE OFFERINGS OF OTHER



Commercial Property For Sale

0 Bellport Ave Medford Ave, NY 11763



Devang Patel

Licensed Real Estate Salesperson

devang.patel@elliman.com

Direct: 631.220.2860 | Cell: 631.220.2860

NY #10401375021

Professional Background

Devang Patel is an Indian American licensed realtor and entrepreneur who has deep roots in his local community of Three Village, NY. He specializes in both commercial and residential real estate and has a passion for providing his clients with the best real estate investments.

A passionate investment advisor, Devang has been working in the real estate business for almost a decade; his ambition and drive have propelled him to the forefront of the industry. His belief in providing exceptional service to clients has aided him in becoming a pillar of his local community.

Devang's knowledge of the real estate markets is what sets him apart from his competitors. His intimate understanding of neighborhoods, as well as his exceptional negotiation skills, has given Devang an edge in the industry. He has been involved in numerous deals, ranging from multi-million-dollar Commercial Properties to single family homes.

Devang loves to read and is well educated in many topics, ranging from socioeconomics to history. In his free time, Devang loves to travel and enjoys experimenting with different cultures' cuisines.

What truly makes Devang unique is his fluency in multiple languages. He speaks four languages, English, Hindi, Gujarati, Urdu and Punjabi. His ability to communicate with clients from any background has allowed him to create meaningful relationships with his clients.

Devang Patel is a highly motivated individual who works hard to get the best possible results for his clients. He is passionate and committed to helping others reach their real estate goals. With his knowledge and skill set, combined with his morals and dedication, Devang always strives to be the best in his field and his community.

The committed leader of Team Patel, Dave recently received the Ellies 2023 Gold Award Top 12% of Agents Company Wide, Homesnap Pro Fastest-Growing Agent Award for the first half of 2021, Ellies 2022 Gold Award Top 13% of Agents Company Wide, Excellent in Customer Service 2021 Homesnap.

Douglas Elliman Commercial - Long Island

550 Smithtown Bypass Suite 117

Smithtown, NY 11787

631.858.2405

For More Information:

Devang Patel

Licensed Real Estate Salesperson

Douglas Elliman Commercial - Long Island

Licensed Real Estate Salesperson

631.220.2860

devang.patel@elliman.com



WWW.ELLIMANCOMMERCIAL.COM

WE ARE COMMERCIAL REAL ESTATE

Commercial real estate involves more than just property listings. To get the most effective results, you need to partner with a company that has a full complement of services and an in-depth team of professionals to help with all of your needs. Douglas Elliman's team of commercial real estate experts is committed to unrivaled performance standards when working with tenants, investors, purchasers and owners. We represent all major property types including office, industrial, retail, apartment and land. We treat each assignment with commitment and focus, from a single transaction in a local market to national and multi-market assignments. We help negotiate contracts, coordinate construction and provide both property management as well as ongoing advisory service to satisfy your changing real estate needs. Our breadth of market knowledge, unprecedented network and use of innovative technology extend to all types of property transactions.

For More Information:

Devang Patel

Licensed Real Estate Salesperson

631.220.2860

devang.patel@elliman.com

Office: 631.858.2405

Fax: 631.543.0851

550 Smithtown Bypass

Smithtown, NY 11787