

2001 Financial Way - 2001 E Financial Way

1

Glendora, CA 91741 | Los Angeles County | LA East Market | San Gabriel Valley Submarket

21,743 SF Class A Office - General Bldg with 1,739 SF Available at \$2.25 FSG



High identity frontage, executive level offices, improvements, 4:1000 parking ratio, close proximity to 210, 57, 10 freeways.

Property Type **General Office**
Bldg Size **21,743 SF**
Status **Existing**
Year Built **1990**

Land Area **0.27 Ac.**
Zoning **GDC-RT66SP**
Sublease **No**
% Occupied **100%**

Building Class **A**
Stories **2**
Typical Floor **10,000 /SF**
Parking Spaces **86**
Parking Ratio **4.00 /1000 SF**
Tenancy **Multi-Tenant**

Available SF **1,739 SF**
Max Contig **1,739 SF**
Min Divisible **1,739 SF**
Rental Rate **\$2.25 FSG**
Sale Price **Not for Sale**
Price/SF **Not for Sale**

Core Factor **22%**
Elevators **1**
Parcel # **8660-011-030; 8660011030**

Operating Exp/SF - -
Taxes/SF - -

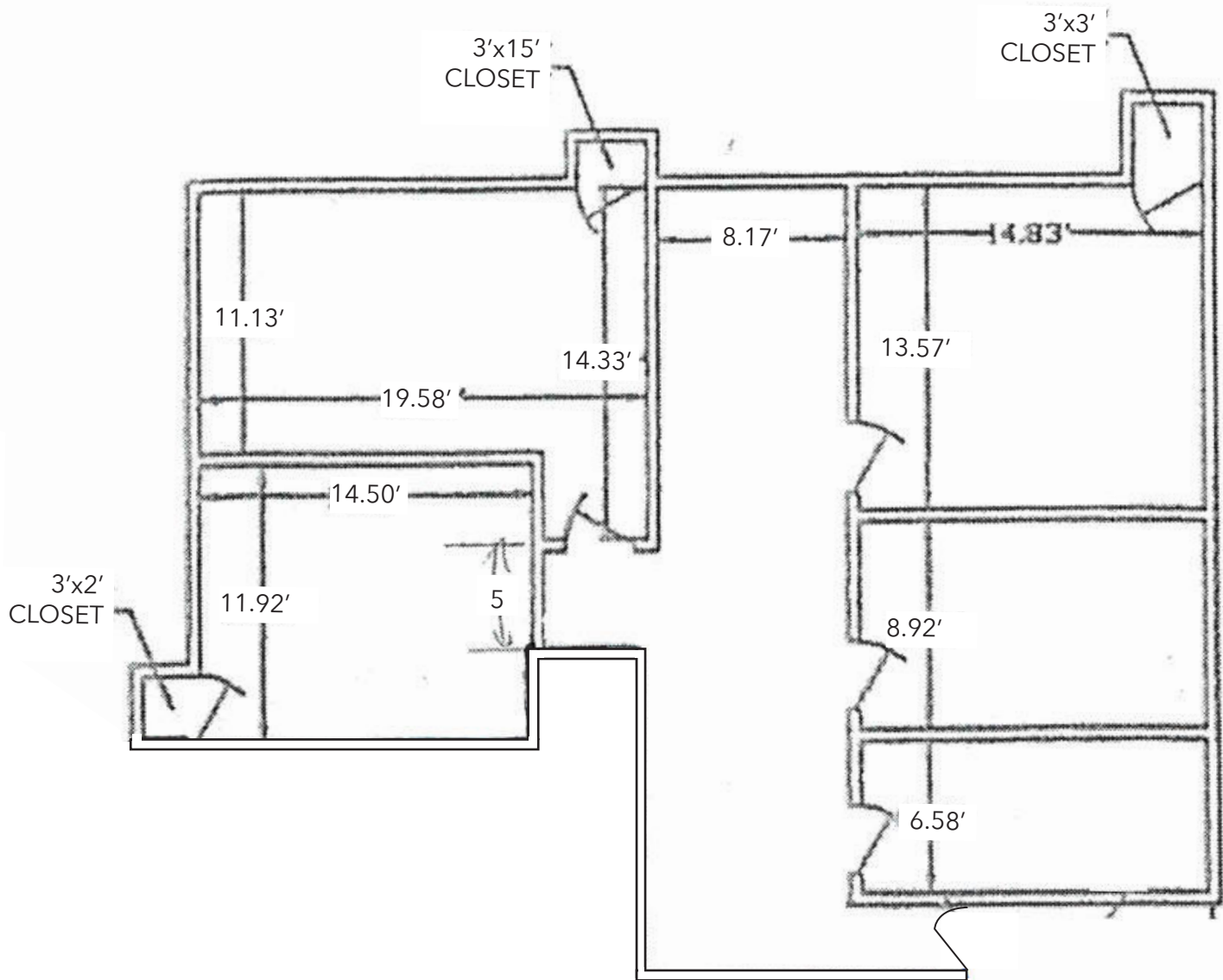
Floor	Unit	SF Avail	Max Contig	Min Div	Lease Rate	Space Type	Vacant	Occupancy	Term
1	104	1,739	1,739	1,739	\$2.25 FSG	Office	No	7/31/2017	

1st floor suite.

Listing Company **Lee & Associates - Todd Launchbaugh (909) 373-2911**

OFFICE SPACE FOR LEASE

2001 E. Financial Way, Glendora, CA



TODD LAUNCHBAUGH, SIOR

tlaunchbaugh@lee-assoc.com

D 909.373.2911

License No. 01059250

All information furnished regarding property for sale, rental or financing is from sources deemed reliable, but no warranty or representation is made to the accuracy thereof and same is submitted to errors, omissions, change of price, rental or other conditions prior to sale, lease or financing or withdrawal without notice. No liability of any kind is to be imposed on the broker herein.