



THALHIMER

OFFICE/MEDICAL FOR LEASE
5001 W. Village Green Drive
Chesterfield County, VA

1,250 - 7,500 SF AVAILABLE



4.5% upfront commission to cooperating brokers

For more information, contact:

AMY BRODERICK

Senior Associate

804 344 7189

amy.broderick@thalhimer.com

BAKER LYNN

Associate

804 697 3464

baker.lynn@thalhimer.com

Thalhimer Center
11100 W. Broad Street
Glen Allen, VA 23060
www.thalhimer.com

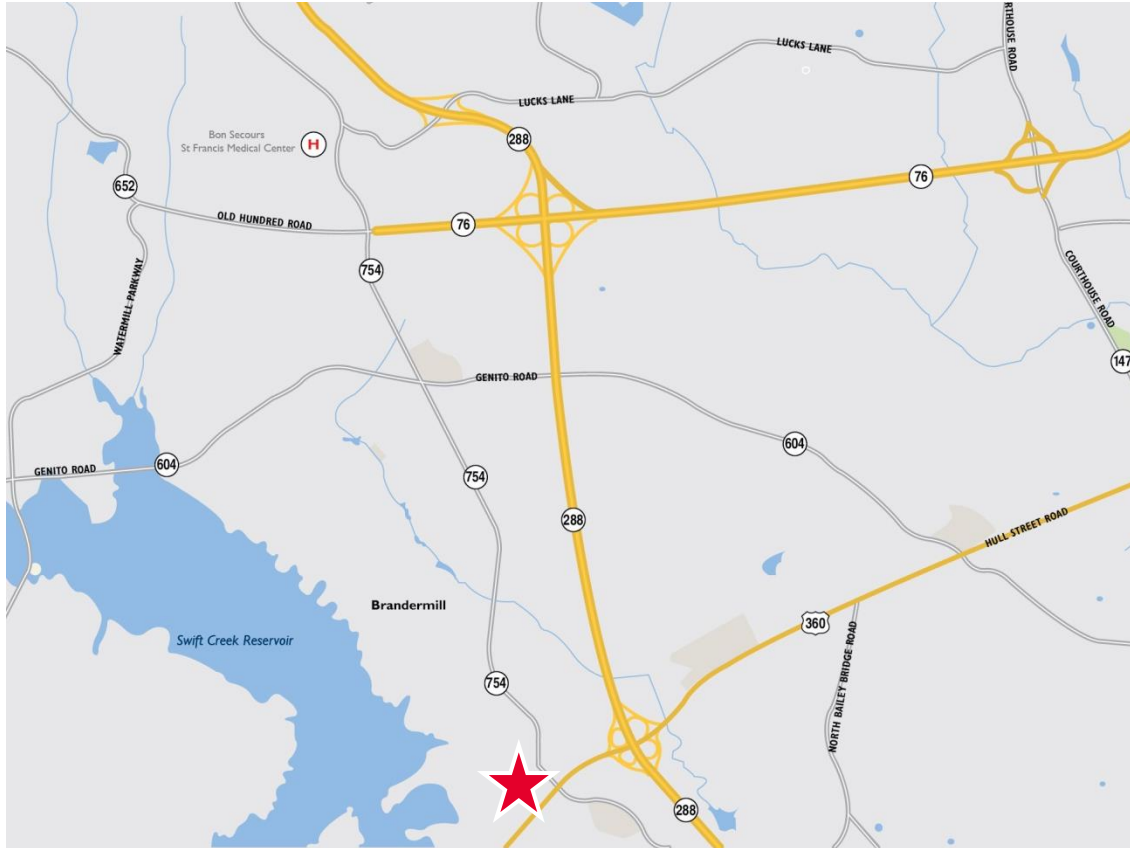
Independently Owned and Operated / A Member of the Cushman & Wakefield Alliance

Cushman & Wakefield | Thalhimer © 2015. No warranty or representation, expressed or implied, is made to the accuracy or completeness of the information contained herein, and same is submitted subject to errors, omissions, change of price, rental or other conditions, withdrawal without notice, and to any special listing conditions imposed by the property owner(s). As applicable, we make no representation as to the condition of the property (or properties) in question.



THALHIMER

OFFICE/MEDICAL FOR LEASE
5001 W. Village Green Drive
Chesterfield County, VA



Property Features

- Suites can be combined to create 5,000 SF
- Medical or General office use
- Located in the Brandermill Community
- Easy access to Route 288 & 360
- Countless retail & restaurants nearby
- Owner on site

Building Features

Total Available	1,250 – 5,000 SF
Lease terms	Flexible
Parking	4:1,000
Rental Rate	\$14 - \$16 PSF Modified Gross

For more information, contact:

AMY BRODERICK

Senior Associate

804 344 7189

amy.broderick@thalhimer.com

BAKER LYNN

Associate

804 697 3464

baker.lynn@thalhimer.com

Thalhimer Center
11100 W. Broad Street
Glen Allen, VA 23060
www.thalhimer.com

Independently Owned and Operated / A Member of the Cushman & Wakefield Alliance

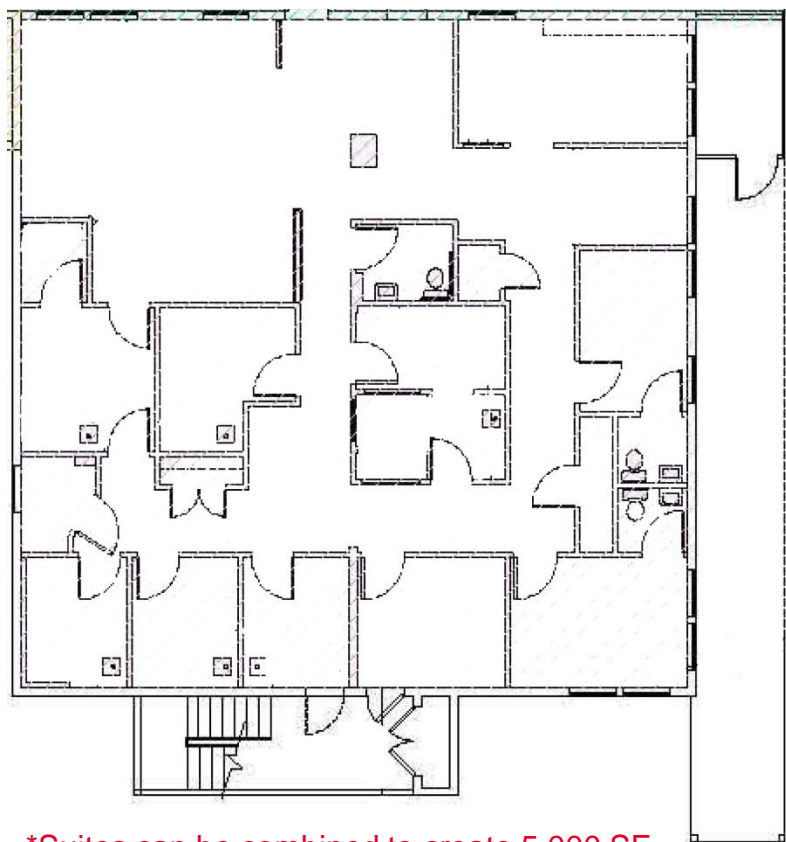
Cushman & Wakefield | Thalhimer © 2015. No warranty or representation, expressed or implied, is made to the accuracy or completeness of the information contained herein, and same is submitted subject to errors, omissions, change of price, rental or other conditions, withdrawal without notice, and to any special listing conditions imposed by the property owner(s). As applicable, we make no representation as to the condition of the property (or properties) in question.



THALHIMER

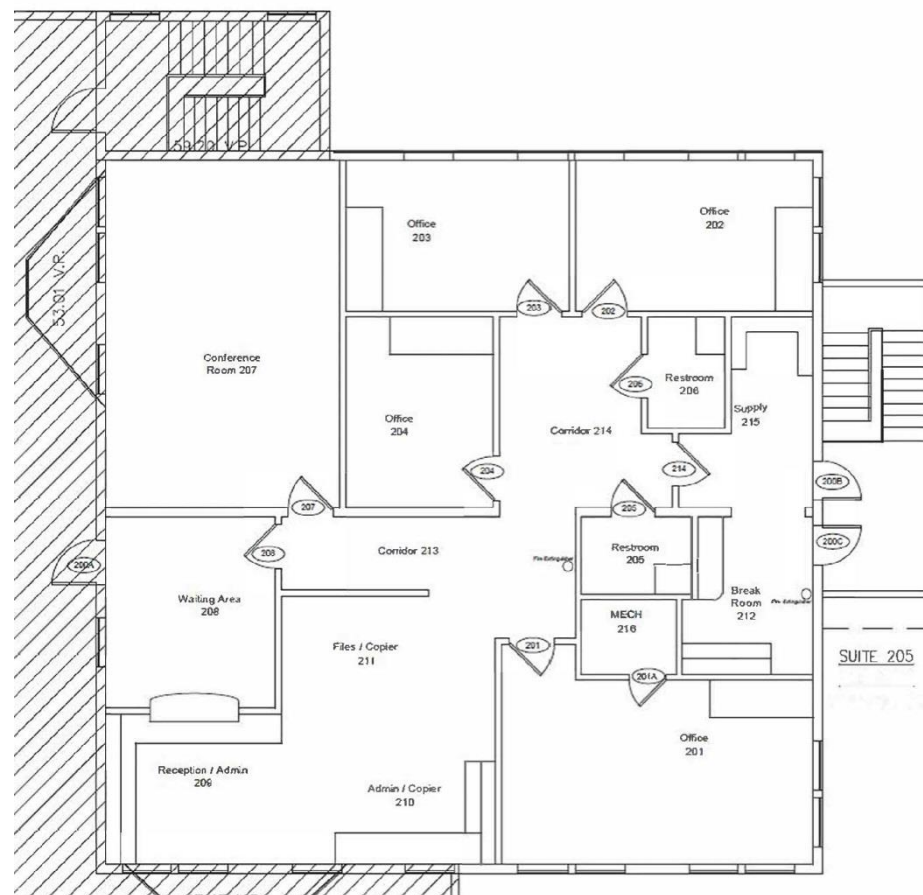
OFFICE/MEDICAL FOR LEASE
5001 W. Village Green Drive
Chesterfield County, VA

SUITE 100*
2,500 SF



*Suites can be combined to create 5,000 SF

SUITE 205
2,500 SF



For more information, contact:

AMY BRODERICK

Senior Associate

804 344 7189

amy.broderick@thalhimer.com

BAKER LYNN

Associate

804 697 3464

baker.lynn@thalhimer.com

Thalhimer Center
11100 W. Broad Street
Glen Allen, VA 23060
www.thalhimer.com

Independently Owned and Operated / A Member of the Cushman & Wakefield Alliance

Cushman & Wakefield \ Thalhimer © 2015. No warranty or representation, expressed or implied, is made to the accuracy or completeness of the information contained herein, and same is submitted subject to errors, omissions, change of price, rental or other conditions, withdrawal without notice, and to any special listing conditions imposed by the property owner(s). As applicable, we make no representation as to the condition of the property (or properties) in question.



THALHIMER

OFFICE/MEDICAL FOR LEASE
5001 W. Village Green Drive
Chesterfield County, VA



For more information, contact:

AMY BRODERICK

Senior Associate

804 344 7189

amy.broderick@thalhimer.com

BAKER LYNN

Associate

804 697 3464

baker.lynn@thalhimer.com

Thalhimer Center
11100 W. Broad Street
Glen Allen, VA 23060
www.thalhimer.com

Independently Owned and Operated / A Member of the Cushman & Wakefield Alliance

Cushman & Wakefield | Thalhimer © 2015. No warranty or representation, expressed or implied, is made to the accuracy or completeness of the information contained herein, and same is submitted subject to errors, omissions, change of price, rental or other conditions, withdrawal without notice, and to any special listing conditions imposed by the property owner(s). As applicable, we make no representation as to the condition of the property (or properties) in question.