

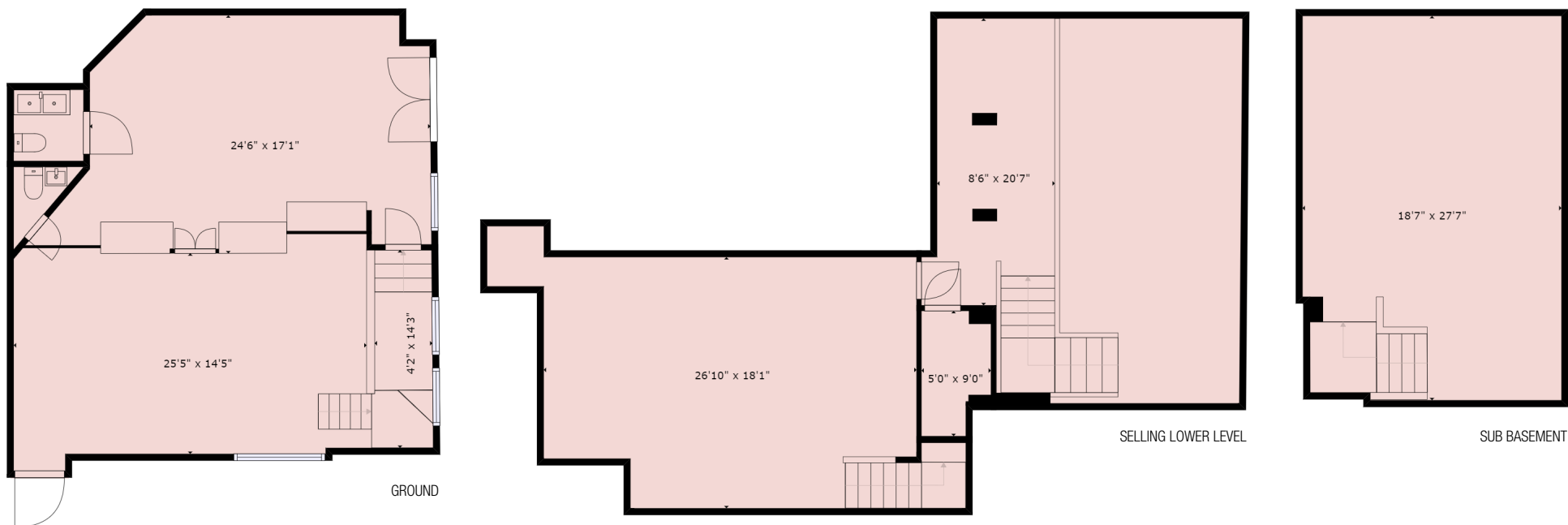
# 357

Lafayette Street

BETWEEN BOND & BLEECKER STREETS NOHO



**CBRE**



## SIZE

1st Fl - **906 SF** (15' ceiling height)

Selling Lower Level - **780 SF** (11' ceiling height)

Sub basement - **508 SF** (11' ceiling height)

+ Outdoor Patio & Parking Spot

Total - **2,190 SF**

**TERM** 10-15 Years

**POSSESSION** July 1st, 2019

## HIGHLIGHTS

Formerly ADORE Flower Shop, Adjacent to KITH

Located in Mahattan's Premier Fashion, Food and Fitness District.

Close Proximity to Mass Transit

Surrounded by new Hotel & Luxury Condo Development

## TRANSIT

**B D F 6**

# NEIGHBORHOOD MAP





**NEIGHBORS** KITH, LULULEMON LAB, DEVOL KITCHENS, OVO, SHOWFIELDS, GOOP, THE SMILE, REFORMATION, KENNETH COLE, BILLY REID, JOHN VARVATOS, THINK COFFEE, PATAGONIA, BOGLIOLI, ATLA, PRESSED JUICERY, IL BUCO, SPRUCE & BOND, GREAT JONES SPA, BOND ST SUSHI, GATO, LEVAIN BAKERY, TENDERGREENS, ACME, VICS, THE WREN, INTERMIX, GEMMA, THE BOWERY HOTEL



© 2019 CBRE, Inc. All rights reserved. This information has been obtained from sources believed reliable, but has not been verified for accuracy or completeness. You should conduct a careful, independent investigation of the property and verify all information. Any reliance on this information is solely at your own risk.

Contact:

**JON KAMALI**

+1 212 984 8318

Jon.Kamali@cbre.com

**BRAD COHEN**

+1 646 374 8575

Brad.Cohen@cbre.com

**CBRE**