

6717 Shawnee Mission Pkwy

Overland Park, Kansas



Office Space For Lease

- ◆ 3,100 sf available
- ◆ Excellent mid-century renovation
- ◆ Aggressive garden level rental rate
- ◆ Campus style setting
- ◆ Close to amenities with great I-35 interstate access at Metcalf/Shawnee Mission Pkwy
- ◆ Owner occupied with on-site building engineer
- ◆ 5/1,000 on-site parking
- ◆ Energy efficient systems throughout
- ◆ Storage available

Exclusive Property Listing

John M. Hofer 816.268.4248 jhofer@ngzimmer.com

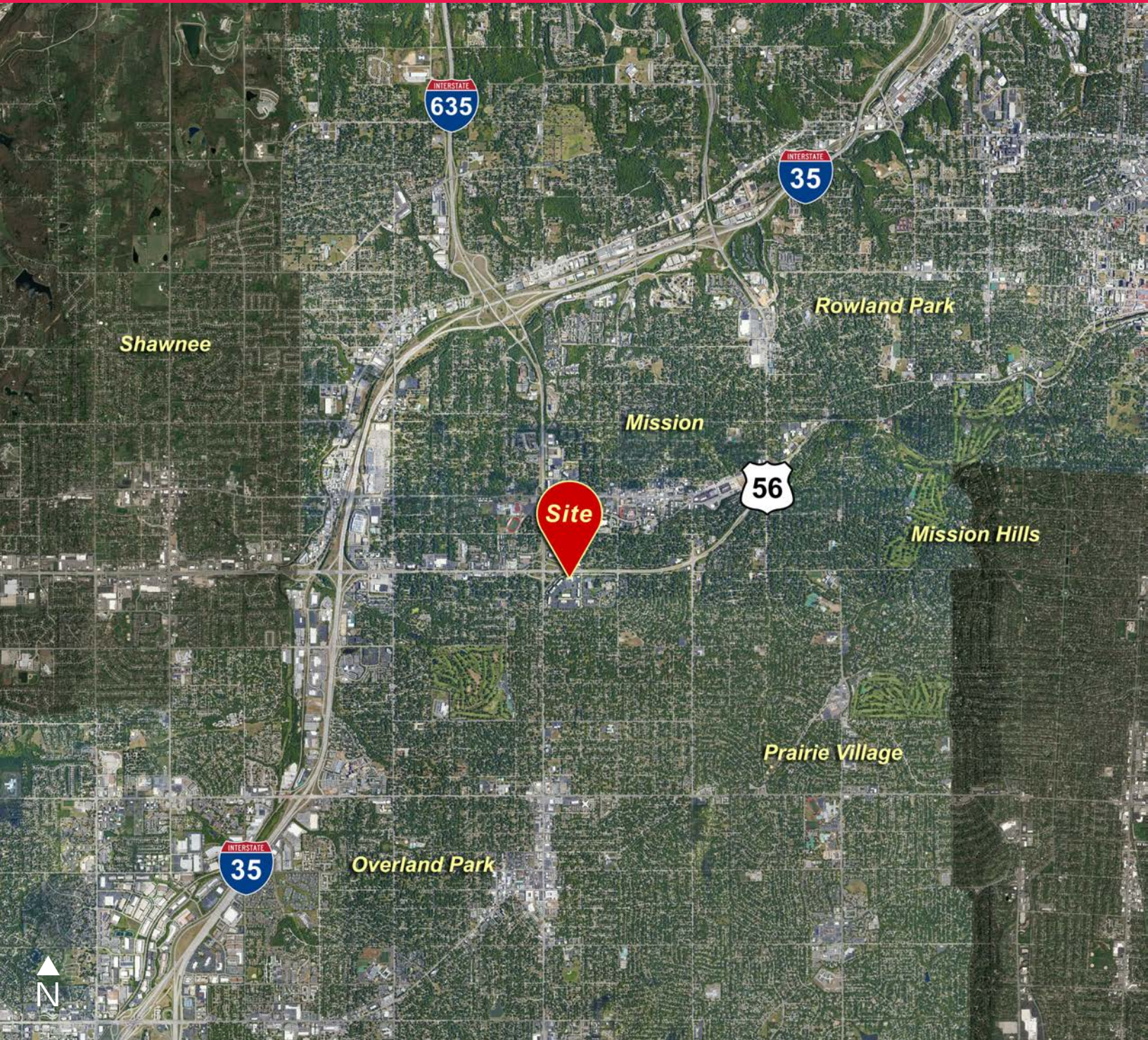
Joyce Murray 816.512.1004 jmurray@ngzimmer.com



Procuring broker shall only be entitled to a commission calculated in accordance with the rates approved by our principal only if such procuring broker executes a brokerage agreement acceptable to us and our principal and the conditions as set forth in the brokerage agreement are fully and unconditionally satisfied. Although all information furnished regarding property for sale, rental, or financing is from sources deemed reliable, such information has not been verified and no express representation is made nor is any to be implied as to the accuracy thereof and it is submitted subject to errors, omissions, change of price, rental or other conditions, prior sale, lease or financing, or withdrawal without notice and to any special conditions imposed by our principal.

6717 Shawnee Mission Pkwy

Overland Park, Kansas



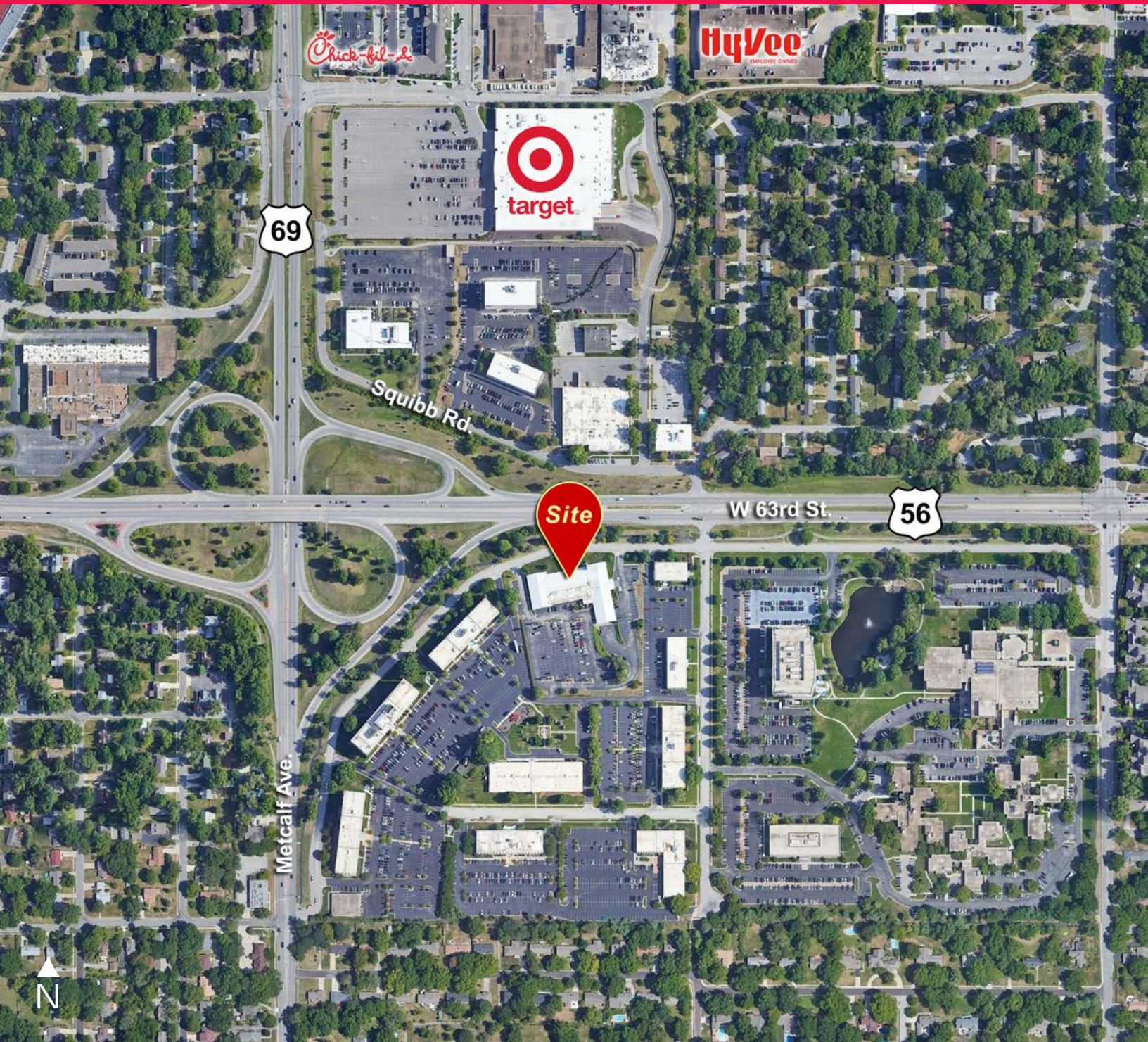
Exclusive Property Listing

John M. Hofer 816.268.4248 jhofer@ngzimmer.com

Joyce Murray 816.512.1004 jmurray@ngzimmer.com

6717 Shawnee Mission Pkwy

Overland Park, Kansas



Exclusive Property Listing

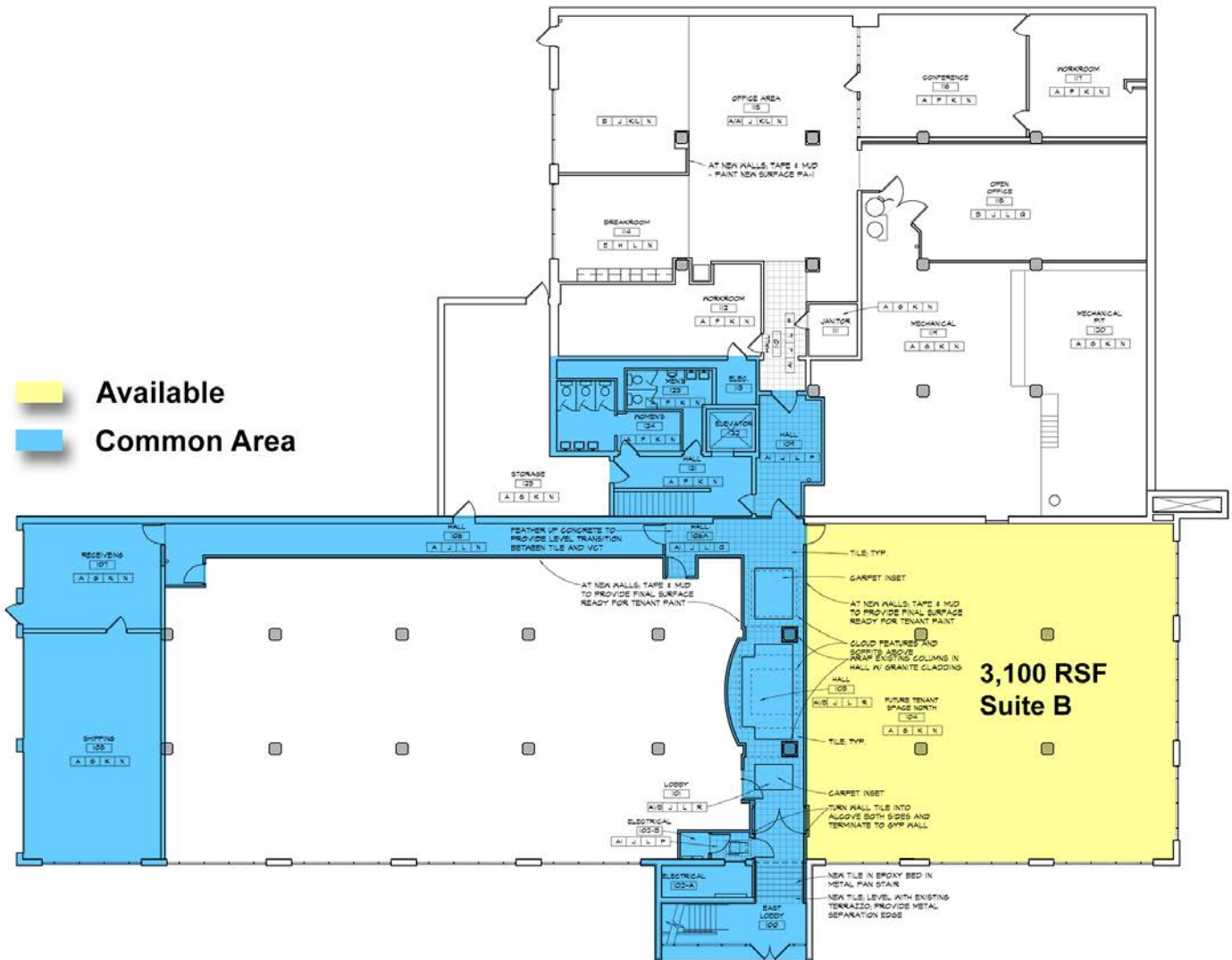
John M. Hoefler 816.268.4248 jhoefler@ngzimmer.com

Joyce Murray 816.512.1004 jmurray@ngzimmer.com

6717 Shawnee Mission Pkwy

Overland Park, Kansas

Floor Plan:



Exclusive Property Listing

John M. Hofer 816.268.4248 jhofer@ngzimmer.com

Joyce Murray 816.512.1004 jmurray@ngzimmer.com