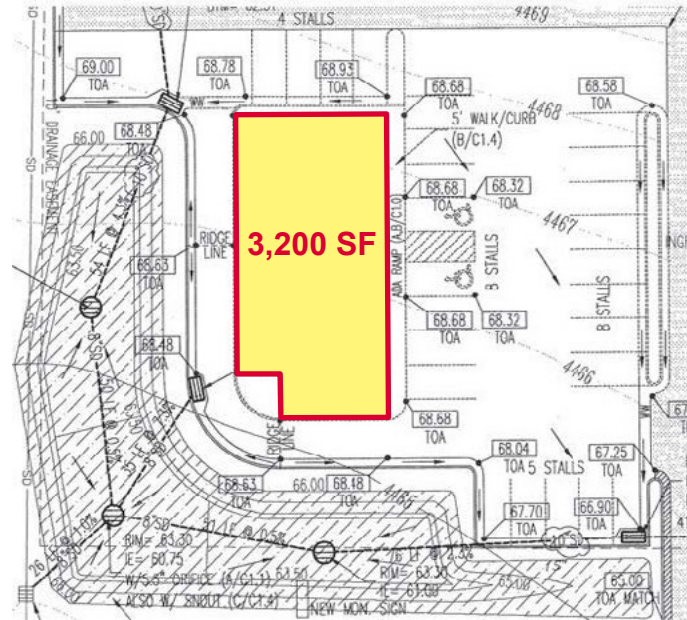


FAIRFIELD CROSSING PAD

835 East Gordon Avenue, Layton, Utah 84041



FOR SALE

\$200,000
(\$12.00 PSF BASED
ON BUILDABLE AREA)

PROPERTY FEATURES

- Retail/Office Pad Available
- Approximately 0.65 Acres Available with 0.38 Buildable Acres
- Zoning: CP-1
- Parking Requirements for Building:
Retail: 5/1,000
Office: 5/1,000
Fast Food: 10/1,000
- High Traffic Area
Gordon Avenue: 13,270 cars/day
Fairfield Road: 11,055 cars/day

FOR MORE
INFORMATION
CONTACT

CHRIS FALK, CCIM, SIOR
801.416.1024
cfalk@ngacres.com

BRAXTON WILLIE, CCIM
801.416.1050
bwillie@ngacres.com

FAIRFIELD CROSSING PAD

835 East Gordon Avenue, Layton, Utah 84041

