

FOR SALE

90 E 24th , Paterson, NJ



Specifications:

- 75,000 SF + 12,500 SF fenced lot
- 55,000 SF ground FL, 20,000 SF 2nd FL
- 2nd Floor Office
- 16' – 26' Ceiling height
- 4 Loading docks
- 6 Drive –Ins
- 2nd floor office
- Great for warehouse distribution
- Asking: \$6,100,000

For additional information 1-800-732-4035:

Shaya Grosinger

(917)359-5727

shaya@gramercynj.com

Isaac Neuman

(917)530-6479

isaac@gramercynj.com

Yoel Jacob

(718) 598-7751

yoel@gramercynj.com

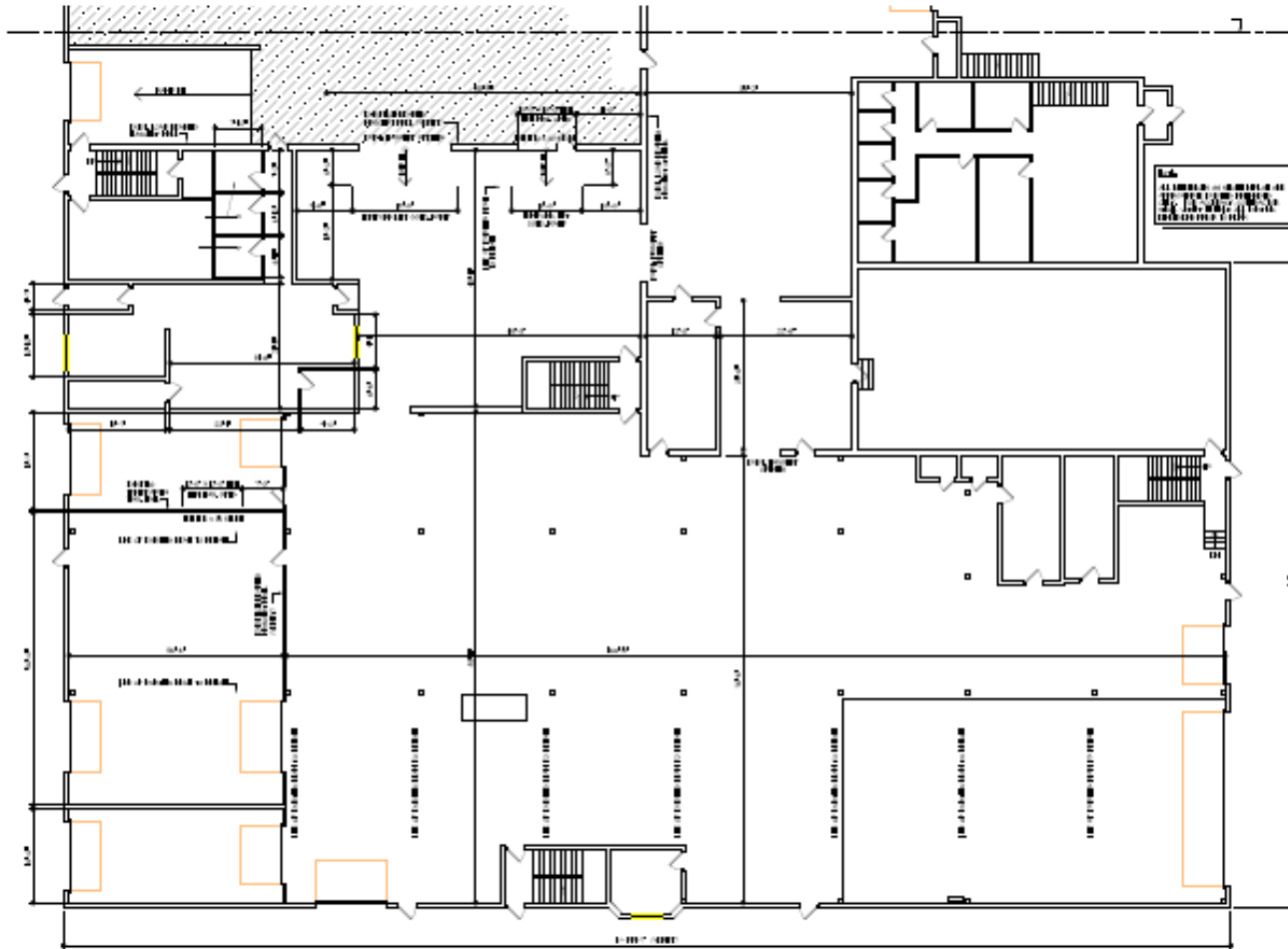


Gramercy Real Estate Services, LLC

25 Commerce Rd. Suite 370, Cranford, NJ 08016

The information contained herein has been obtained from sources considered to be reliable, but no guarantee of its accuracy is made by this company. In addition, no representation is made respecting zoning, condition of title, measurements, dimensions, or any matters of a legal or environmental nature. Such matters should be referred to legal counsel for determination. This correspondence is subject to errors, omissions, updates or withdrawal without prior notice.

90 E 24th , Paterson, NJ

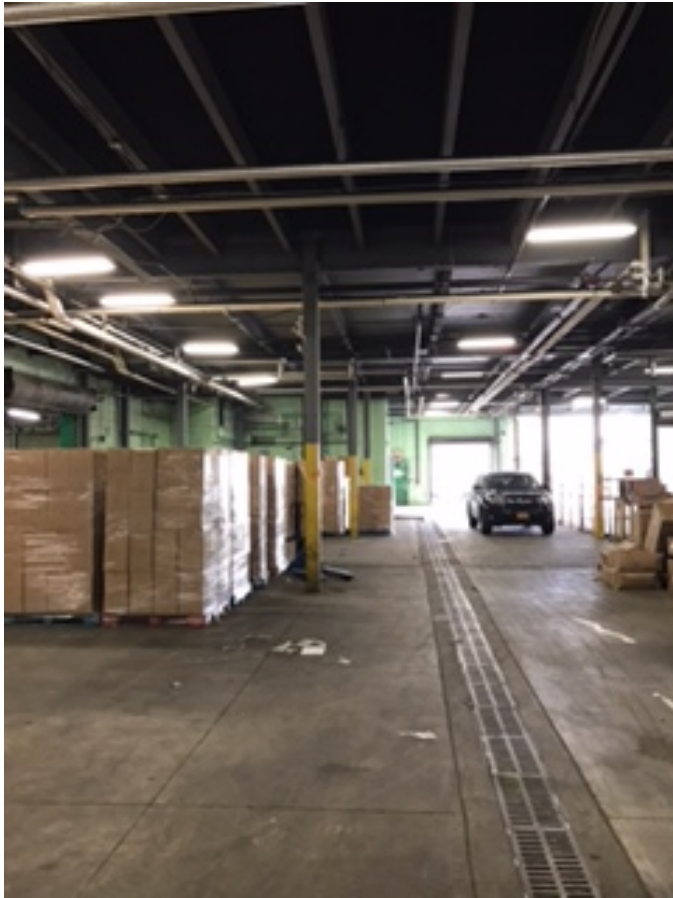


Gramercy Real Estate Services, LLC

25 Commerce Rd. Suite 370, Cranford, NJ 08016

The information contained herein has been obtained from sources considered to be reliable, but no guarantee of its accuracy is made by this company. In addition, no representation is made respecting zoning, condition of title, measurements, dimensions, or any matters of a legal or environmental nature. Such matters should be referred to legal counsel for determination. This correspondence is subject to errors, omissions, updates or withdrawal without prior notice.

90 E 24th , Paterson, NJ



Gramercy Real Estate Services, LLC

25 Commerce Rd. Suite 370, Cranford, NJ 08016

90 E 24th , Paterson, NJ



Gramercy Real Estate Services, LLC

25 Commerce Rd. Suite 370, Cranford, NJ 08016