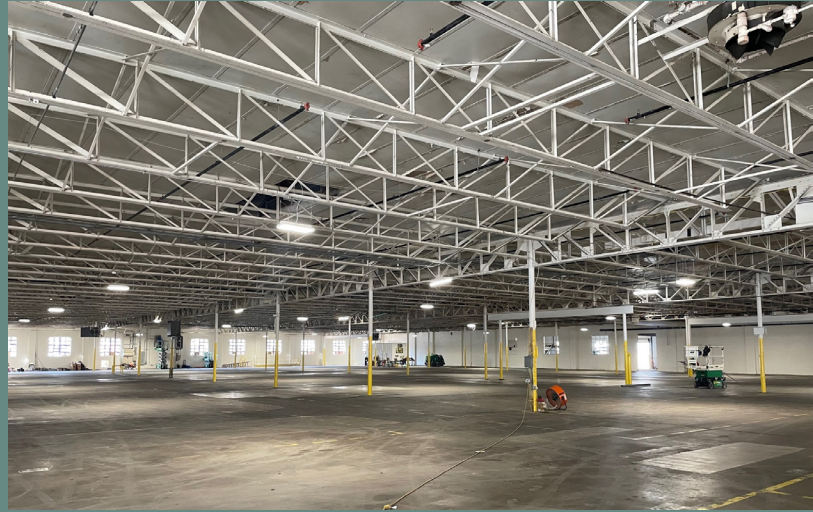


2743 PIERCE STREET DALLAS, TEXAS

Newly Renovated
135,500 SF Building with
Outside Storage



JASON MOSER

214.267.0451

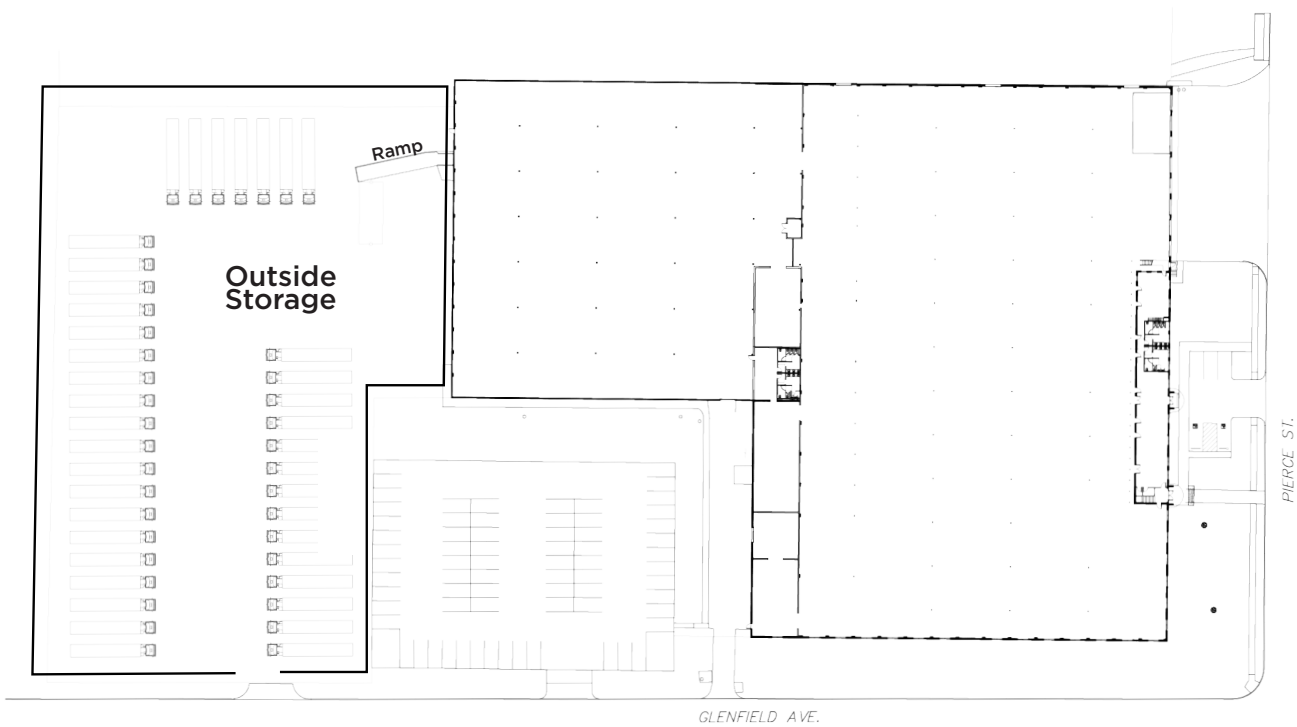
jmoser@streamrealty.com

RIDLEY CULP

214.560.2422

ridley.culp@streamrealty.com

STREAM



PROPERTY HIGHLIGHTS

133,500 TOTAL SF
- 3,000 SF OFFICE

304,920 SF LAND

8 DOCK HIGH DOORS

2 OVERSIZED GRADE LEVEL DOORS

HEAVY POWER (480 VOLT)

15' CLEAR HEIGHT

50' X 28' COLUMN SPACING

OUTSIDE STORAGE

NEW LED LIGHTING THROUGHOUT

CONSTRUCTED IN 1951/1969

RENOVATIONS

NEWLY PAINTED

NEW ROOF ON THE OFFICE PORTION

NEWLY BUILT OUT OFFICE

WHITE BOXED

PAINTED COLUMNS

DRIVE TIMES

8 miles
DALLAS CBD

31 miles
FORT WORTH CBD

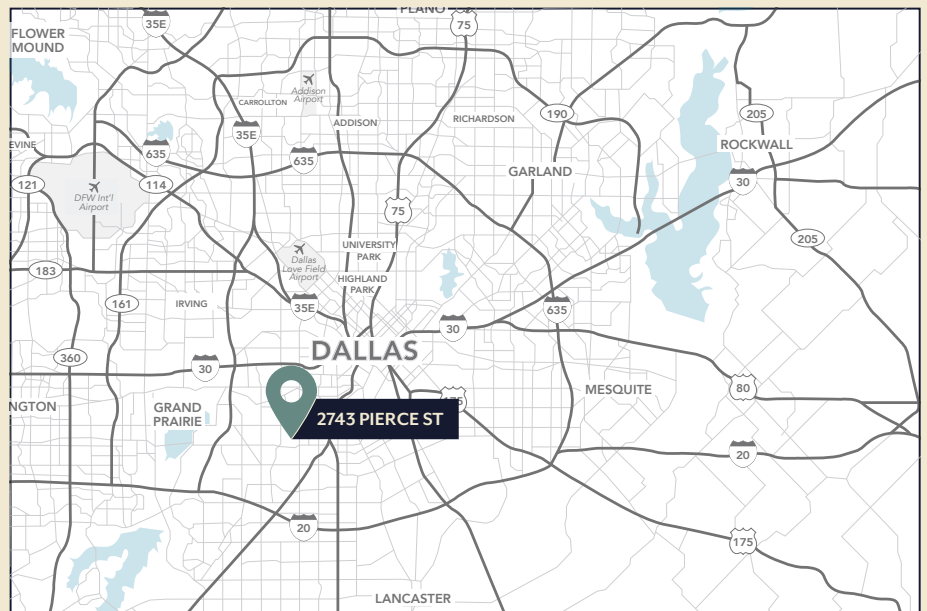
24 miles
DFW AIRPORT

11 miles
DALLAS LOVE FIELD AIRPORT

2 miles
I-35

3 miles
LOOP 12

5.5 miles
I-20



JASON MOSER

214.267.0451

jmoser@streamrealty.com

RIDLEY CULP

214.560.2422

ridley.culp@streamrealty.com

STREAM