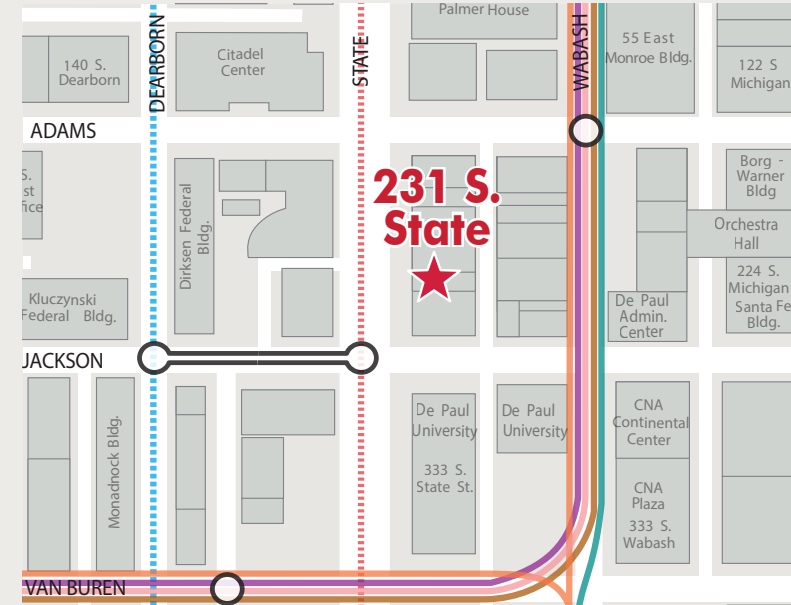


# GROUND FLOOR STATE STREET SPACE AVAILABLE

## 231 S. STATE ST. | CHICAGO, IL

**3,953 SF Available - RESTAURANT POSSIBLE**



### DEMOGRAPHICS

	0.25 Miles	0.5 Miles	1 Mile
• Population	2,598	13,970	56,507
• Households	795	5,886	32,963
• Median HH Income	\$68,511	\$71,117	\$77,208
• Daytime Population	44,002	154,287	307,247

FOR INFORMATION, CONTACT:

**Patrick Owens**  
[patrick.owens@transwestern.com](mailto:patrick.owens@transwestern.com)  
**312-881-7031**

**Shannon Pope**  
[shannon.pope@transwestern.com](mailto:shannon.pope@transwestern.com)  
**312-881-7030**

# GROUND FLOOR STATE STREET SPACE AVAILABLE

## 231 S. STATE ST. | CHICAGO, IL

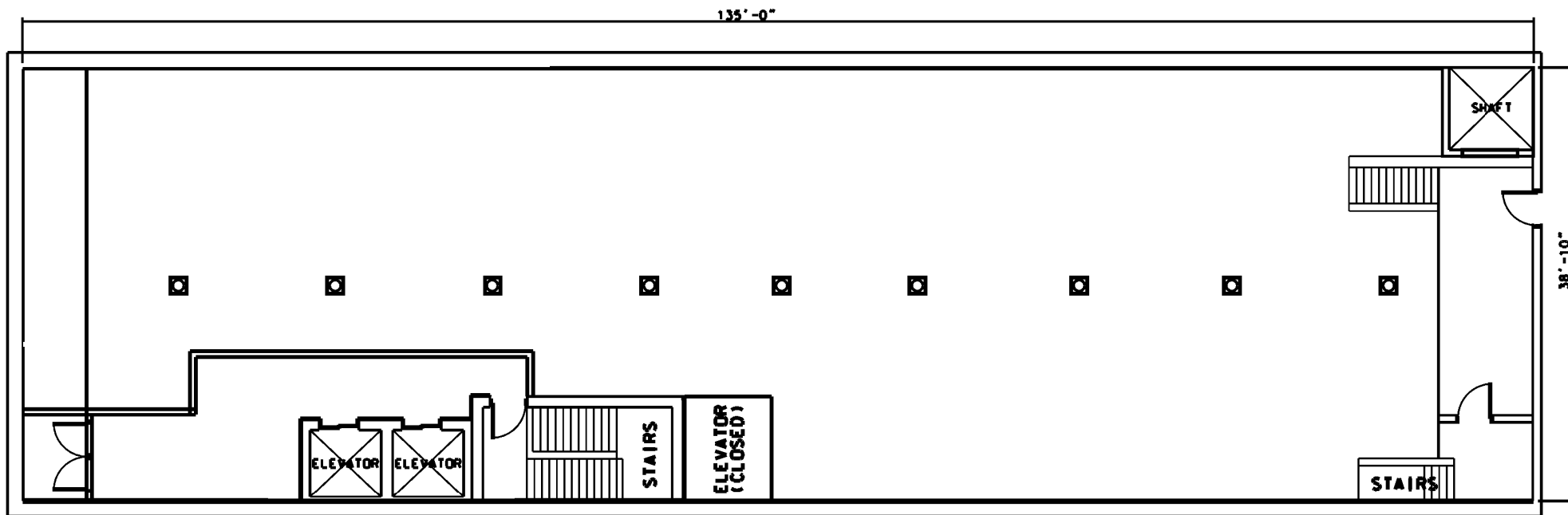
### PROPERTY INFORMATION

- 3,953 SF of first floor retail space currently occupied by Avenue
- Strong State Street branding opportunity
- 2.8 Million SF of retail on State Street
- +/- 500,000 people per day within a half mile
- Nearby Millennium Park receives five million visitors per year
- First of its kind, 124,000 SF City Target opened in 2012
- CTA red line and blue line access in front of store
- Block 37, a 300,000 SF vertical shopping center, opened in 2009
- Located near approximately 95,000 students from DePaul University, Robert Morris College, Columbia College, The Art Institute of Chicago, John Marshall Law School, Roosevelt University, and others
- Other retailers include: Anthropologie, Zara, H&M, Nordstrom Rack, Sephora, Steve Madden, Footlocker, Bank of America, CVS, Ulta, Barnes & Noble



# GROUND FLOOR STATE STREET SPACE AVAILABLE

231 S. STATE ST. | CHICAGO, IL



1st FLOOR  
AREA 3953'-3" SQ FT  
EXCLUDING DIC  
ENTRENCE AND  
COMMEN AREA