

EPC SPRUCE VILLAGE CENTRE

5 SPRUCE VILLAGE WAY, SPRUCE GROVE AB | FOR LEASE



PROPERTY HIGHLIGHTS

- Main and second floor units available for lease
- Elevator access to the second floor
- Corner location provides easy in and out access and visibility
- TELUS PureFibre available (copper and managed fiber)
- After hours key fob entry
- Ample surface parking in front and rear
- Immediate possession
- Join Bright Horizons Daycare, The Play Cafe, Domino's Pizza, and Donair Lab

Ideal for health & medical, professional, and a variety of office and retail uses

RE/MAX
COMMERCIAL®

RE/MAX EXCELLENCE
COMMERCIAL DIVISION

Colin Ewanchyshyn

Associate Broker

E: colin@commercialyeg.ca

D: 780.909.3446

commercialyeg.ca

#1 RE/MAX Commercial Team Worldwide 2017, 2018, 2019

O:780.429.1200

The information contained herein was obtained from sources deemed to be reliable and is believed to be true; it has not been verified and as such, cannot be warranted nor form a part of any future contract. All measurements should be independently verified by the Purchaser/Tenant.

EPC SPRUCE VILLAGE CENTRE



PROPERTY DETAILS

Legal Description:	Plan 0820912, Block 5, Lot 37
Zoning:	C3 - Neighborhood Retail & Service District
Ideal Tenant Use	Retail / Professional / Office / Medical / Fitness
Parking	Paved Surface Stalls
Availability	Immediate
Lease Rates	Main Floor: Starting at \$26 PSF Second Floor: Starting at \$18 PSF
Op Costs	\$9.50 PSF est.

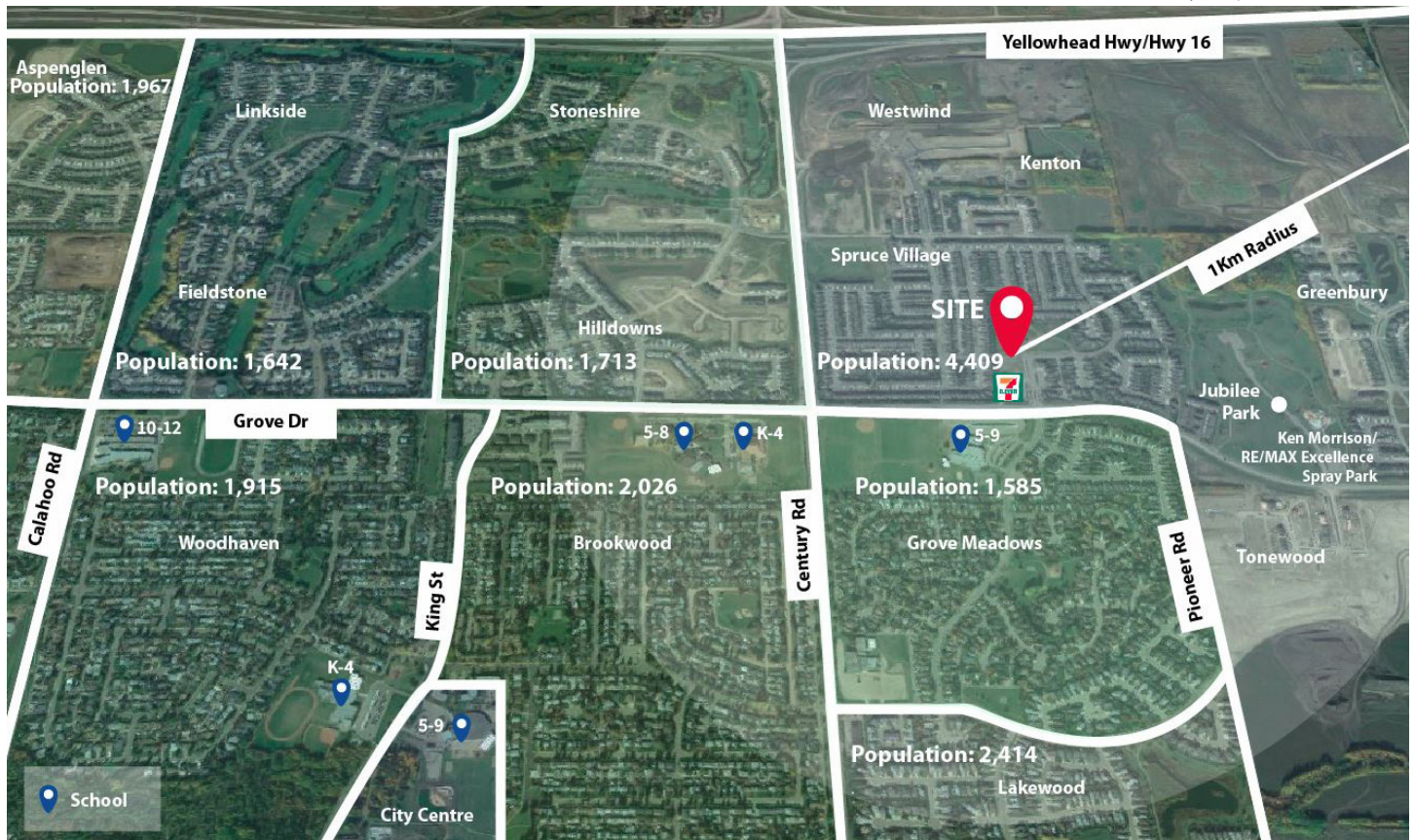
EPC SPRUCE VILLAGE CENTRE

THE AREA

EPC Spruce Village Plaza is located on a corner lot with exceptional access, and next to a gas station and convenience store, in the family-centric city of Spruce Grove. The city is largely comprised of a young, family demographic with an increase in discretionary income.

- It has grown on average 4.9 % each year from 2012 to 2017 (2017 census).
- The highest percentage of young people in Spruce Grove live in the nearby communities of Westwind, Kenton, Spruce Village, Greenbury, Prescott
- 2.9% growth in household income is projected from 2017 to 2022, which could approach an average of \$140,000 by 2022

Information sourced from 2017 City of Spruce Grove census.



DEMOGRAPHICS



Median Age:
37.9 years



61% of the households
earn over \$100,000



Average Household Size:
2.89 persons

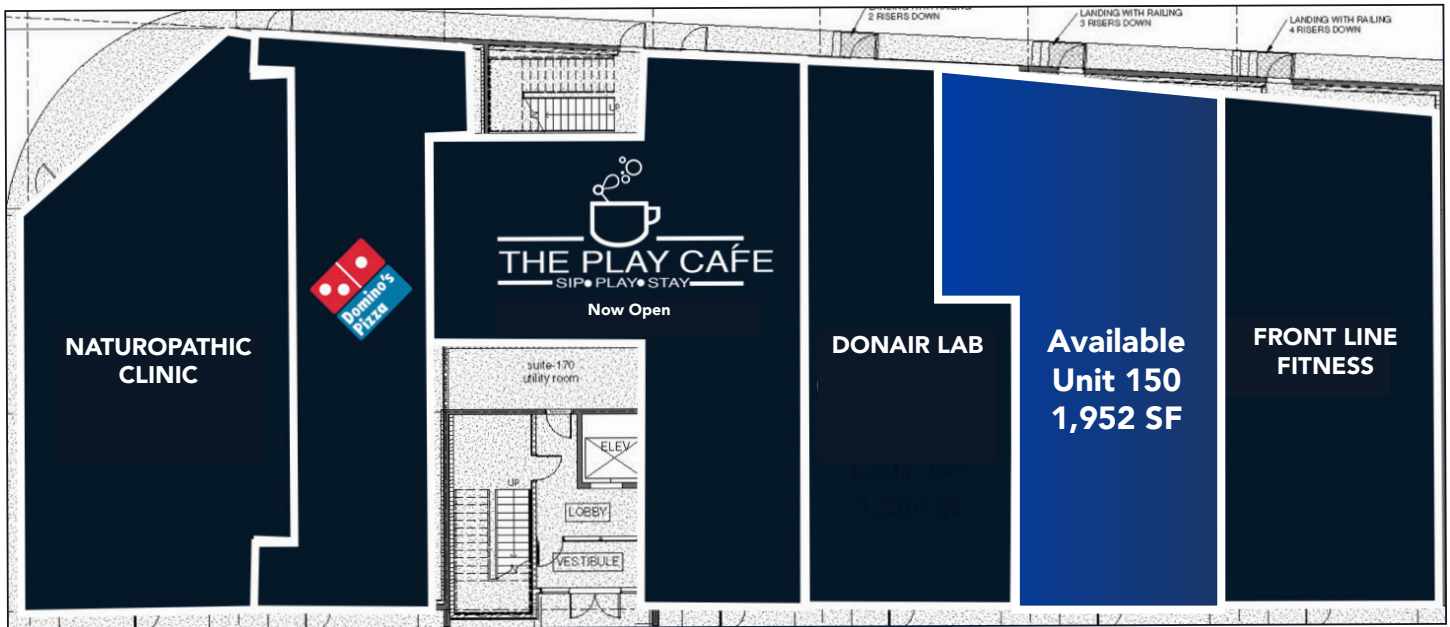


Average Household Income:
\$121,046

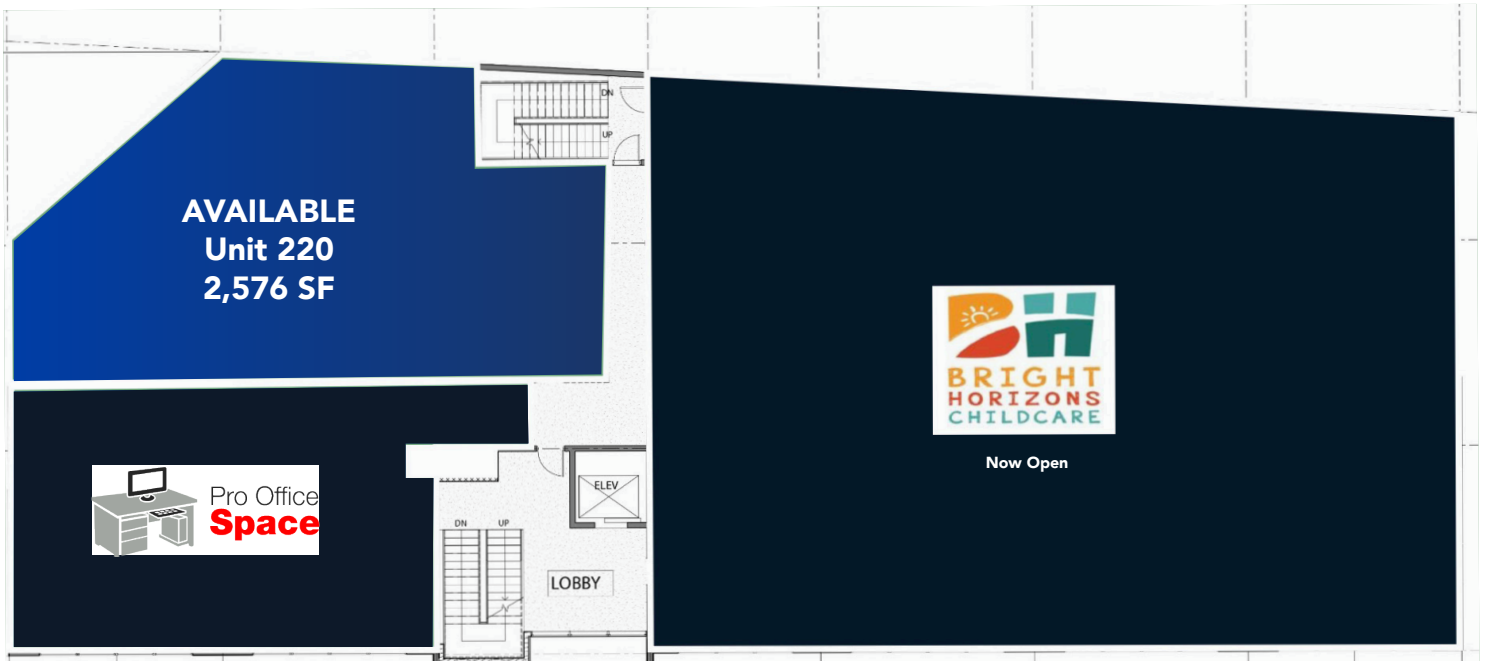
EPC SPRUCE VILLAGE CENTRE

FLOOR PLAN

Main Floor



Second Floor



RE/MAX
COMMERCIAL

RE/MAX EXCELLENCE
COMMERCIAL DIVISION

Colin Ewanchyshyn
Associate Broker
E: colin@commercialyeg.ca
D: 780.909.3446

#201, 5607 199 Street Edmonton, AB T6M 0M8

