

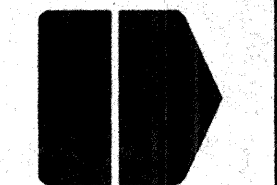
REVISIONS	
NO.	DATE

ISSUANCES	
DATE	TITLE
5/21/97	PERMIT SET
5/22/97	NO SET
5/26/98	REVISION #1
2/28/99	REVISION #2

STORE DEVELOPMENT DEPARTMENT
P.O. BOX 3165
HARRISBURG, PA 17105
(717) 761-2633

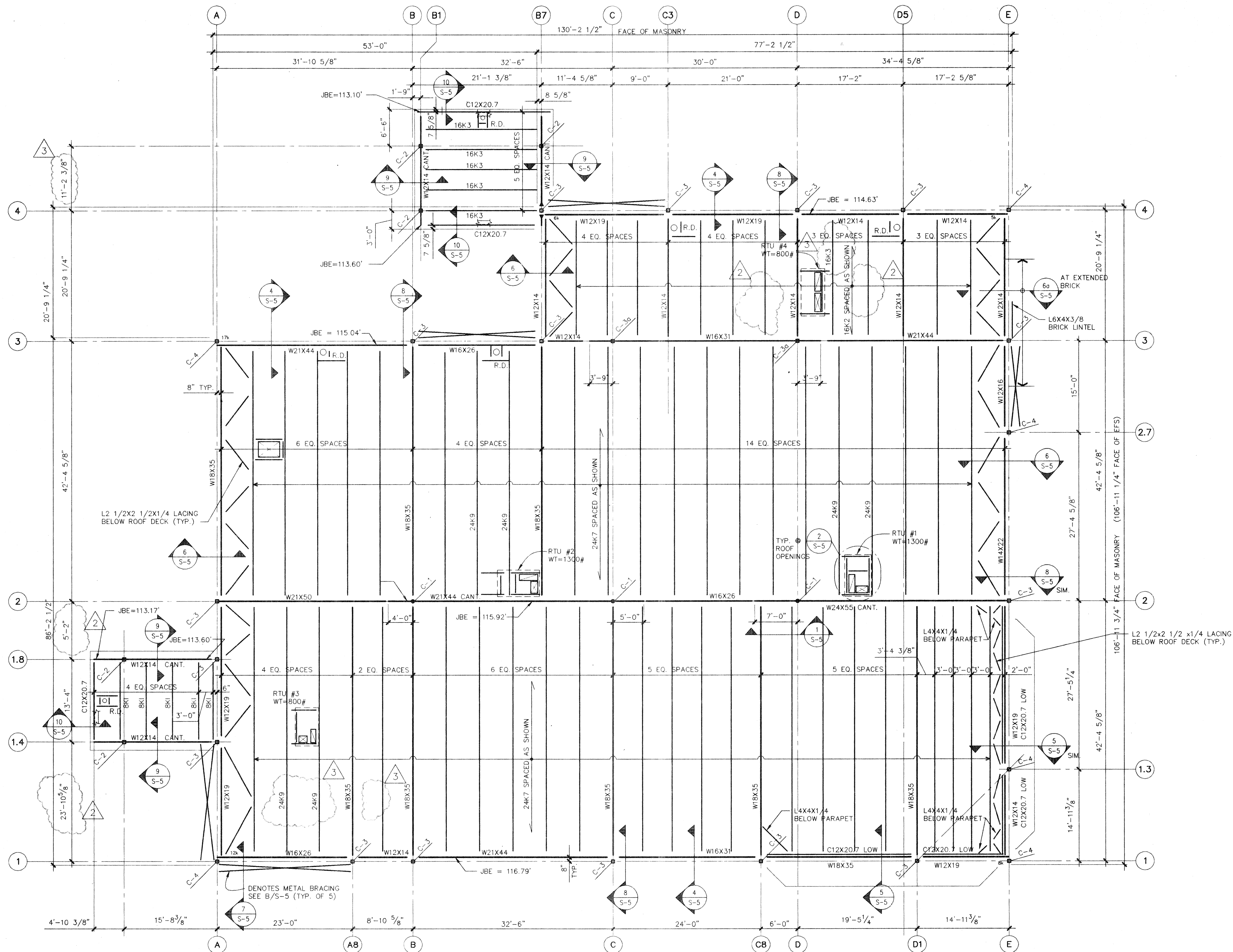
PROJECT: RITE AID STORE SALISBURY
MARYLAND
SHEET TITLE: ROOF FRAMING PLAN

RiteAid
CORPORATION



DATE: MAY 97
SCALE: NOTED
SHEET NUMBER: S-3

875040



ROOF FRAMING PLAN

SCALE: 1/8" = 1'-0"

NOTES:

1. ROOF CONSTRUCTION: 1 1/2" 22 GAGE PAINTED METAL ROOF DECK. (3 OR MORE SPANS).
2. TOP OF STEEL ELEVATION SEE PLAN
3. STEEL ERECTOR TO MAINTAIN TEMPORARY BRACING UNTIL PERMANENT STRAP BRACING IS IN PLACE.
4. CAP ALL COLUMNS W/ DEEPEST SECTION, TYP. U.N.O.
5. PROVIDE DOUBLE STUDS AT EA. SIDE OF WALL OPENINGS.
6. PROVIDE TRIPLE STUDS AT OVERHEAD DOORS AND AT BANK DOORS.

LEGEND

F	- FOOTING MARK
P	- PIER MARK
C	- COLUMN MARK
BF	- BOTTOM OF FOOTING
TOP	- TOP OF PIER
FS	- FOOTING STEP
TOS	- TOP OF STEEL
L	- LINTEL
B	- SOIL BORING
BP	- BEARING PLATE
JBE	- JOIST BEARING ELEVATION
◀	- DENOTES MOMENT CONNECTION

Ehlert/Bryan, Inc.
Consulting Structural Engineers
1451 Dolley Madison Blvd. Suite 220
McLean, VA 22101-3812
(703) 827-9552