

FOUNTAIN VALLEY COMMERCE CENTER



17151-17233 NEWHOPE STREET // FOUNTAIN VALLEY CA // 92708



FOR MORE INFORMATION:

TOM TERRY

o. 714.935.2313

f. 714.978.9431

tterry@voitco.com

Lic. #02069424

HAYDEN SOCCI, SIOR, CCIM

o. 714.935.2379

f. 714.978.9431

hsocci@voitco.com

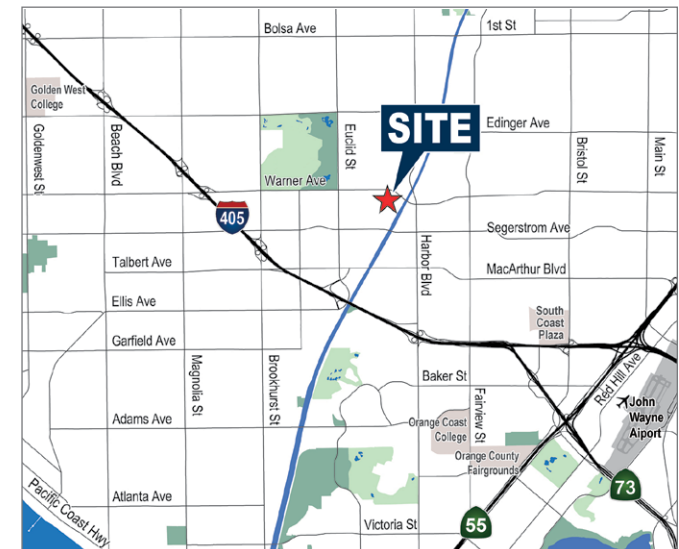
Lic. #01705038



REAL ESTATE SERVICES

PROPERTY FEATURES

- » Suites Range from 425 to 6,569 Square Feet
- » Seven (7) Multi-Tenant Industrial / Office Buildings Totaling 118,007 Square Feet
- » High Image Business Park
- » Major Newhope Avenue Frontage and Identity
- » 16' Minimum Clearance for Warehouse Units
- » \pm 3:1 Parking Ratio (3 Spaces per 1,000 Sq. Ft.)
- » Ground Level Loading Doors
- » Professionally Managed Business Park



The information contained herein is believed to be accurate but is not warranted as to its accuracy and may change or be updated without notice. Seller or landlord makes no representation as to the environmental condition of the property and recommends purchaser's or tenant's independent investigation. Licensed as Real Estate Salespersons by the DRE. ©2025 Voit Real Estate Services, Inc. All Rights Reserved. Lic. #01991785

FOUNTAIN VALLEY COMMERCE CENTER

Availability

OFFICE SUITES

ADDRESS	TOTAL SIZE	ASKING RATE PSF	BASE RENT	COMMENTS
17195 Newhope Street, Ste. 203	618 Sq. Ft.	\$1.35 PSF	\$834.00	Open area/reception, and 3 private offices.
17195 Newhope Street, Ste. 208	831 Sq. Ft.	\$1.35 PSF	\$1,122.00	Open area/reception, and 2 private offices.
17155 Newhope Street, Ste. R	1,012 Sq. Ft.	\$1.39 PSF	\$1,407.00	Open area/reception, private office and restroom. First floor suite.
17151 Newhope Street, Ste. 208	1,172 Sq. Ft.	\$1.35 PSF	\$1,582.00	Open area/reception, and 3 private offices.
17151 Newhope Street, Ste. 203	1,184 Sq. Ft.	\$1.35 PSF	\$1,598.00	Open area/reception, and 4 private offices.

INDUSTRIAL UNITS

ADDRESS	TOTAL SIZE	OFFICE SIZE	ASKING RATE PSF	BASE RENT	COMMENTS
---------	------------	-------------	-----------------	-----------	----------

No Availabilities

* There is an additional monthly CAM Fee (Common Area Maintenance). CAM includes electricity on second floor suites.

FOUNTAIN VALLEY COMMERCE CENTER

17151-17233 NEWHOPE STREET
FOUNTAIN VALLEY, CA 92708

FOR MORE INFORMATION:

TOM TERRY

o. 714.935.2313
ttery@voitco.com
Lic. #02069424

HAYDEN SOCCI, SIOR, CCIM

o. 714.935.2379
hsocci@voitco.com
Lic. #01705038

VOIT REAL ESTATE SERVICES

2400 E. Katella Avenue, Suite 750
Anaheim, CA 92806
www.voitco.com

FOUNTAIN VALLEY COMMERCE CENTER

Site Plan



NOTE: Site Plan is approximate and may not be to scale.

AVAILABLE

FOUNTAIN VALLEY COMMERCE CENTER
17151-17233 NEWHOPE STREET
FOUNTAIN VALLEY, CA 92708



FOR MORE INFORMATION:

TOM TERRY
o. 714.935.2313
ttery@voitco.com
Lic. #02069424

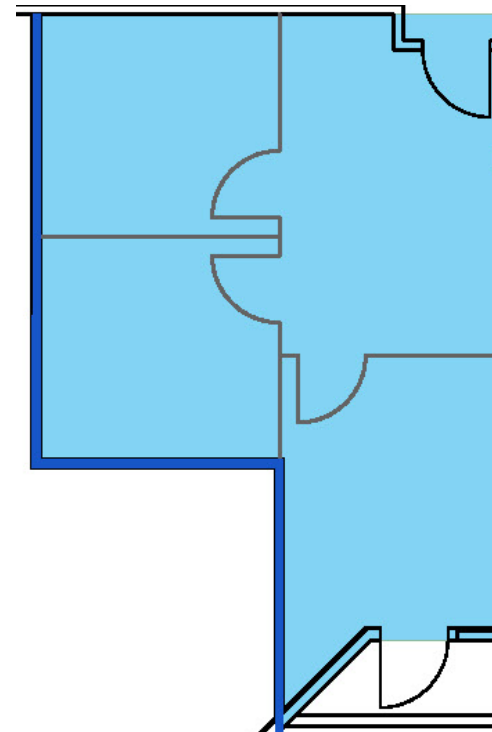
HAYDEN SOCCI, SIOR, CCIM
o. 714.935.2379
hsocci@voitco.com
Lic. #01705038

FOUNTAIN VALLEY COMMERCE CENTER
17151-17233 NEWHOPE STREET
FOUNTAIN VALLEY, CA 92708

SUITE FEATURES:

- » Available: ±618 Sq. Ft.
- » Second Floor Office Space
- » Reception Area
- » 3 Private Offices
- » \$1.35 PSF, MG
- » CAM Fee of \$0.21 Per Sq. Ft.(Includes Electricity)

FLOOR PLAN:



FOR MORE INFORMATION:

TOM TERRY

o. 714.935.2313
ttery@voitco.com
Lic. #02069424

HAYDEN SOCCI, SIOR, CCIM

o. 714.935.2379
hsocci@voitco.com
Lic. #01705038

VOIT REAL ESTATE SERVICES

2400 E. Katella Avenue, Suite 750
Anaheim, CA 92806
www.voitco.com

SITE KEY PLAN:



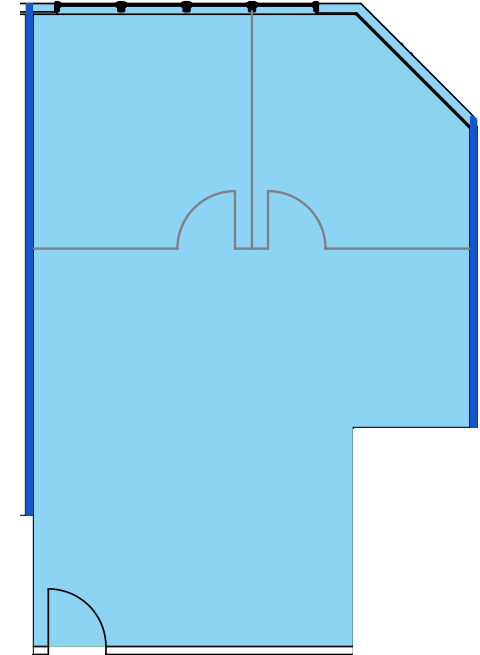
NOTE: Site and Floor Plan are approximate and may not be to scale.

FOUNTAIN VALLEY COMMERCE CENTER
17151-17233 NEWHOPE STREET
FOUNTAIN VALLEY, CA 92708

SUITE FEATURES:

- » Available: ±831 Sq. Ft.
- » Second Floor Office Space
- » Reception Area
- » 2 Private Offices
- » \$1.35 PSF, MG
- » CAM Fee of \$0.21 Per Sq. Ft.(Includes Electricity)

FLOOR PLAN:



FOR MORE INFORMATION:

TOM TERRY

o. 714.935.2313
ttery@voitco.com
Lic. #02069424

HAYDEN SOCCI, SIOR, CCIM

o. 714.935.2379
hsocci@voitco.com
Lic. #01705038

VOIT REAL ESTATE SERVICES

2400 E. Katella Avenue, Suite 750
Anaheim, CA 92806
www.voitco.com

SITE KEY PLAN:



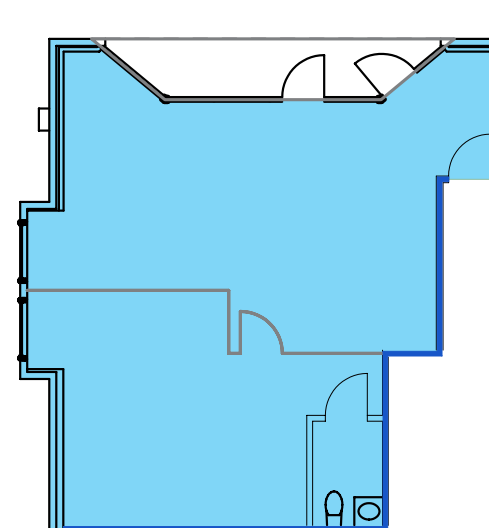
NOTE: Site and Floor Plan are approximate and may not be to scale.

FOUNTAIN VALLEY COMMERCE CENTER
17151-17233 NEWHOPE STREET
FOUNTAIN VALLEY, CA 92708

SUITE FEATURES:

- » Available: ±1,012 Sq. Ft.
- » First Floor Office Space
- » Reception Area
- » Private Office
- » \$1.39 PSF, MG
- » CAM Fee of \$0.16 Per Sq. Ft.

FLOOR PLAN:



FOR MORE INFORMATION:

TOM TERRY

o. 714.935.2313
ttery@voitco.com
Lic. #02069424

HAYDEN SOCCI, SIOR, CCIM

o. 714.935.2379
hsocci@voitco.com
Lic. #01705038

VOIT REAL ESTATE SERVICES

2400 E. Katella Avenue, Suite 750
Anaheim, CA 92806
www.voitco.com

SITE KEY PLAN:



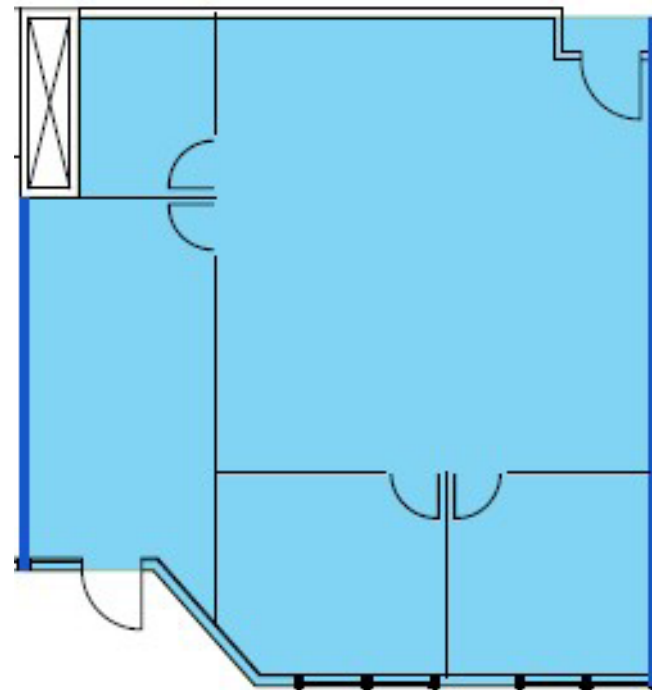
NOTE: Site and Floor Plan are approximate and may not be to scale.

FOUNTAIN VALLEY COMMERCE CENTER
17151-17233 NEWHOPE STREET
FOUNTAIN VALLEY, CA 92708

SUITE FEATURES:

- » Available: ±1,172 Sq. Ft.
- » Second Floor Office Space
- » Reception Area
- » 2 Private Offices
- » \$1.35 PSF, MG
- » CAM Fee of \$0.21 Per Sq. Ft.(Includes Electricity)

FLOOR PLAN:



FOR MORE INFORMATION:

TOM TERRY

o. 714.935.2313
ttery@voitco.com
Lic. #02069424

HAYDEN SOCCI, SIOR, CCIM

o. 714.935.2379
hsocci@voitco.com
Lic. #01705038

VOIT REAL ESTATE SERVICES

2400 E. Katella Avenue, Suite 750
Anaheim, CA 92806
www.voitco.com

SITE KEY PLAN:



NOTE: Site and Floor Plan are approximate and may not be to scale.

FOUNTAIN VALLEY COMMERCE CENTER
17151-17233 NEWHOPE STREET
FOUNTAIN VALLEY, CA 92708

FOR MORE INFORMATION:

TOM TERRY

o. 714.935.2313
ttery@voitco.com
Lic. #02069424

HAYDEN SOCCI, SIOR, CCIM

o. 714.935.2379
hsocci@voitco.com
Lic. #01705038

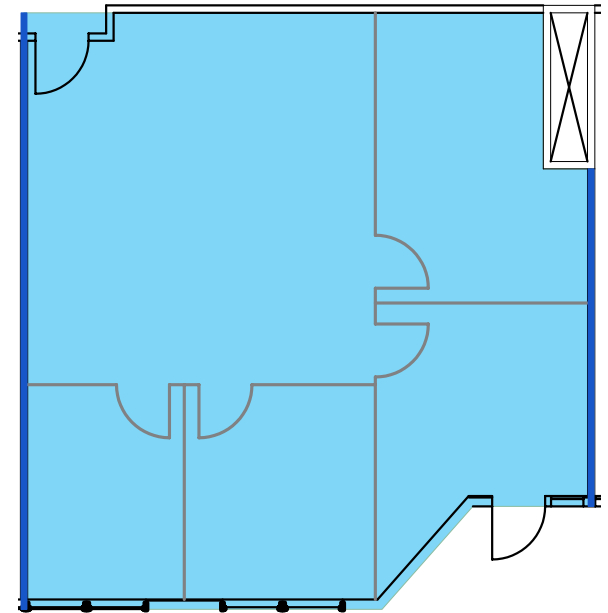
VOIT REAL ESTATE SERVICES

2400 E. Katella Avenue, Suite 750
Anaheim, CA 92806
www.voitco.com

SUITE FEATURES:

- » Available: ±1,184 Sq. Ft.
- » Second Floor Office Space
- » Reception Area
- » 4 Private Offices
- » \$1.35 PSF, MG
- » CAM Fee of \$0.21 Per Sq. Ft.(Includes Electricity)

FLOOR PLAN:



SITE KEY PLAN:

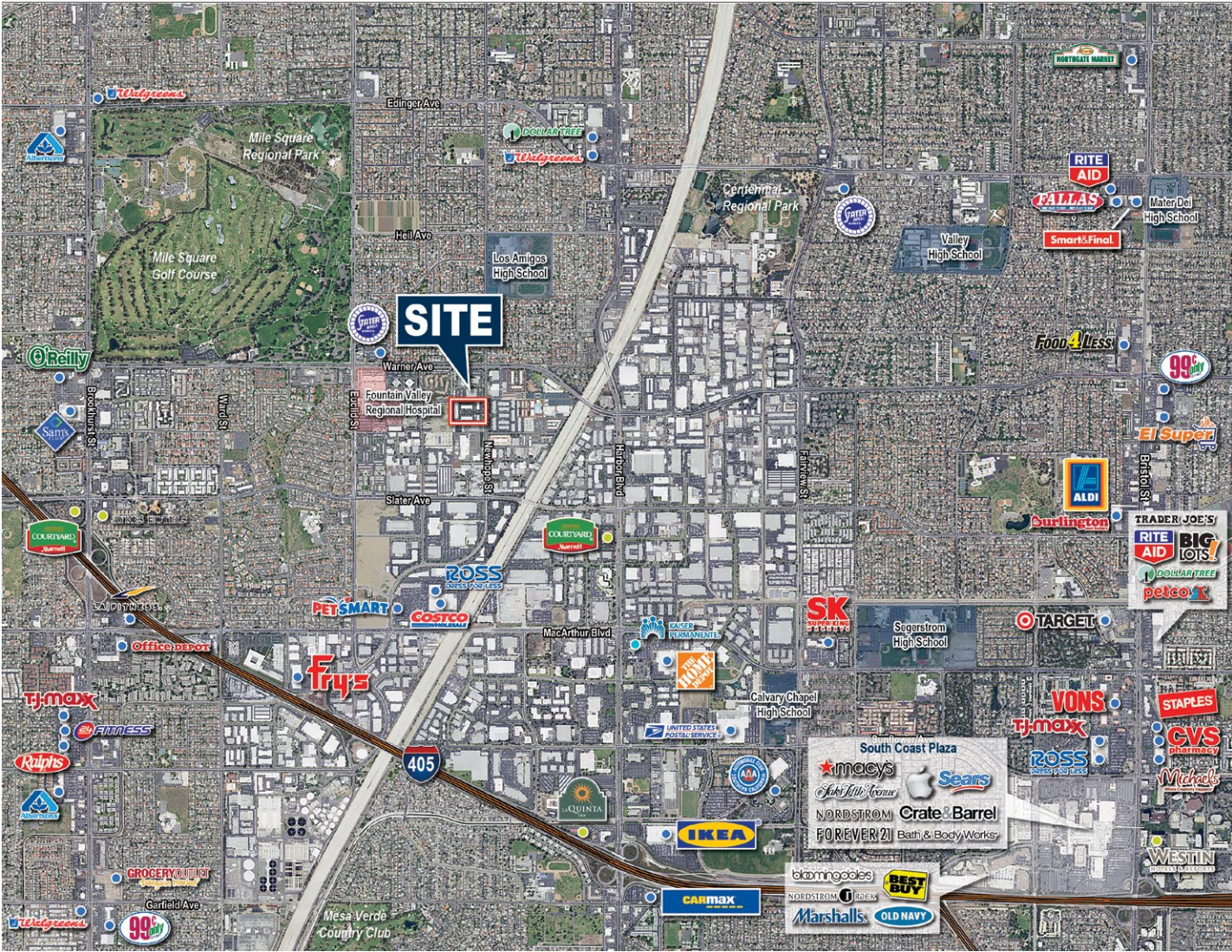


NOTE: Site and Floor Plan are approximate and may not be to scale.

FOUNTAIN VALLEY COMMERCE CENTER



Nearby Amenities



FOUNTAIN VALLEY COMMERCE CENTER
 17151-17233 NEWHOPE STREET
 FOUNTAIN VALLEY, CA 92708



FOR MORE INFORMATION:

TOM TERRY
 o. 714.935.2313
 tterry@voitco.com
 Lic. #02069424

HAYDEN SOCCI, SIOR, CCIM
 o. 714.935.2379
 hsocci@voitco.com
 Lic. #01705038

NEARBY AMENITIES

- » South Coast Plaza
- » Costco
- » IKEA
- » Home Depot
- » 24 Hour Fitness
- » Stater Bros.
- » Mile Square Park and Golf Course
- » Courtyard Marriott
- » Fry's Electronics



FOUNTAIN VALLEY COMMERCE CENTER

Property Photos



FOUNTAIN VALLEY COMMERCE CENTER
17151-17233 NEWHOPE STREET
FOUNTAIN VALLEY, CA 92708



FOR MORE INFORMATION:

TOM TERRY
o. 714.935.2313
ttery@voitco.com
Lic. #02069424

HAYDEN SOCCI, SIOR, CCIM
o. 714.935.2379
hsocci@voitco.com
Lic. #01705038

Voit
REAL ESTATE SERVICES