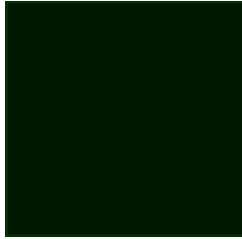
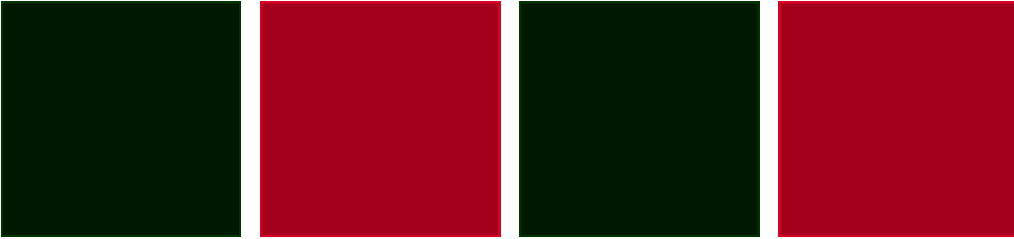




# MONTPELIER OFFICE SPACE FOR LEASE 250 MAIN STREET



## Building Information

1st Floor - 1,410 SF

⇒ Reception area, 3 Offices, Conference Room, Open-Office Area, Kitchenette and ADA Compliant

2nd Floor - 1,610 SF

⇒ 6 Offices, Conference Room, Reception area, Copy room, and Kitchenette

### Features:

- Ample parking
- Air Conditioned
- Stunning views
- Utilities included
- On-Site Management
- Less than one (1) mile to Montpelier's central business district

### Lease Rate:

**1st Floor: \$18.50/SF Gross**

**2nd Floor: \$16.50/SF Gross**

**CALL FOR DETAILS**

### Contact information

Jeff Nick

NAI J.L. Davis Realty

Direct: (802) 876-6923

fax 802-879-0553

Email: [jeff@jeffnick.com](mailto:jeff@jeffnick.com)

[www.jldavisrealty.com](http://www.jldavisrealty.com)

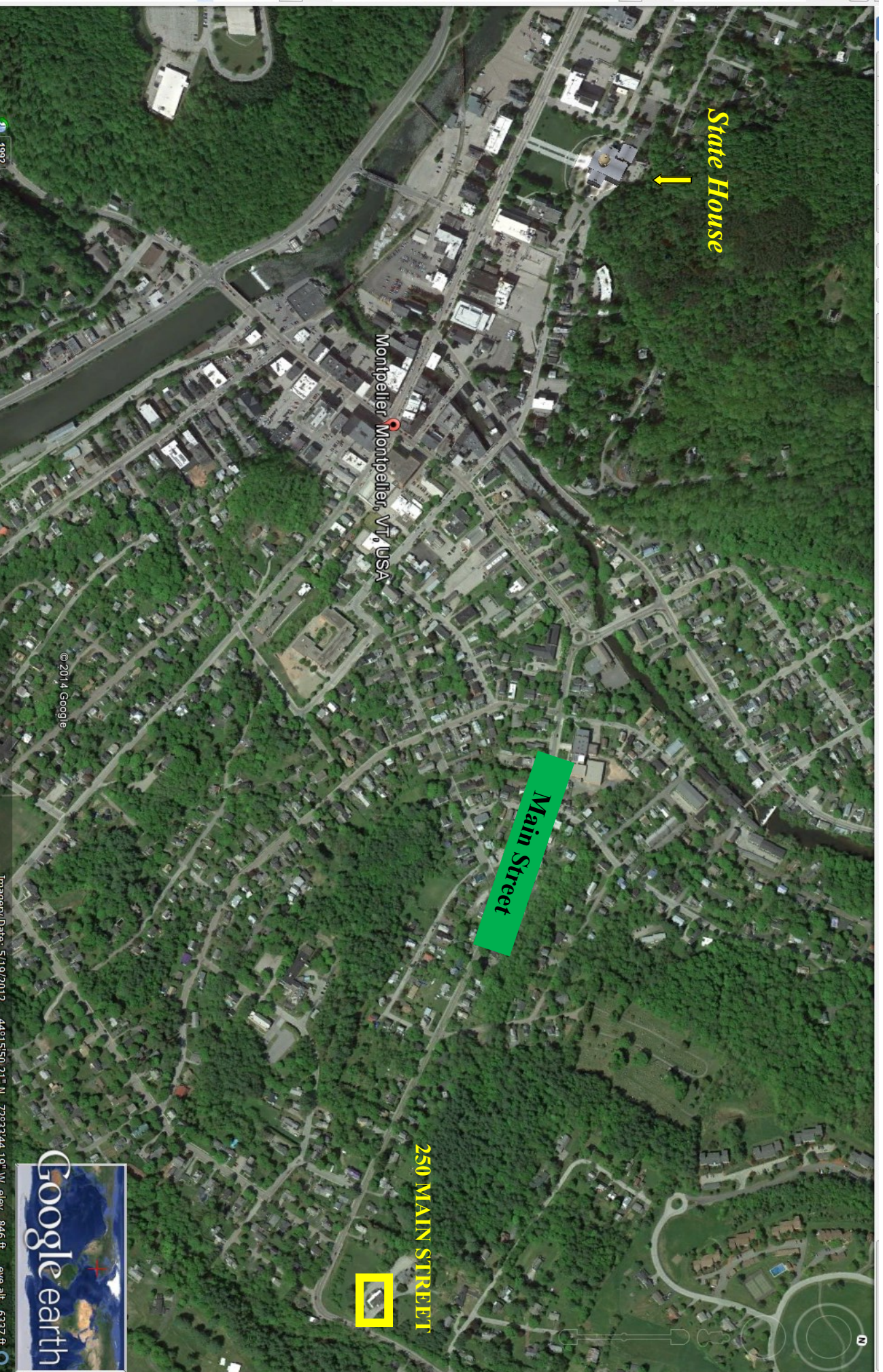


**NAI J.L. Davis Realty**

Commercial Real Estate Services, Worldwide.

The information contained herein has been given to us by the owner of the property or other sources we deem reliable; we have no reason to doubt its accuracy, but we do not guarantee it. All information should be verified prior to purchase or lease.

# Montpelier, VT



State House

Main Street

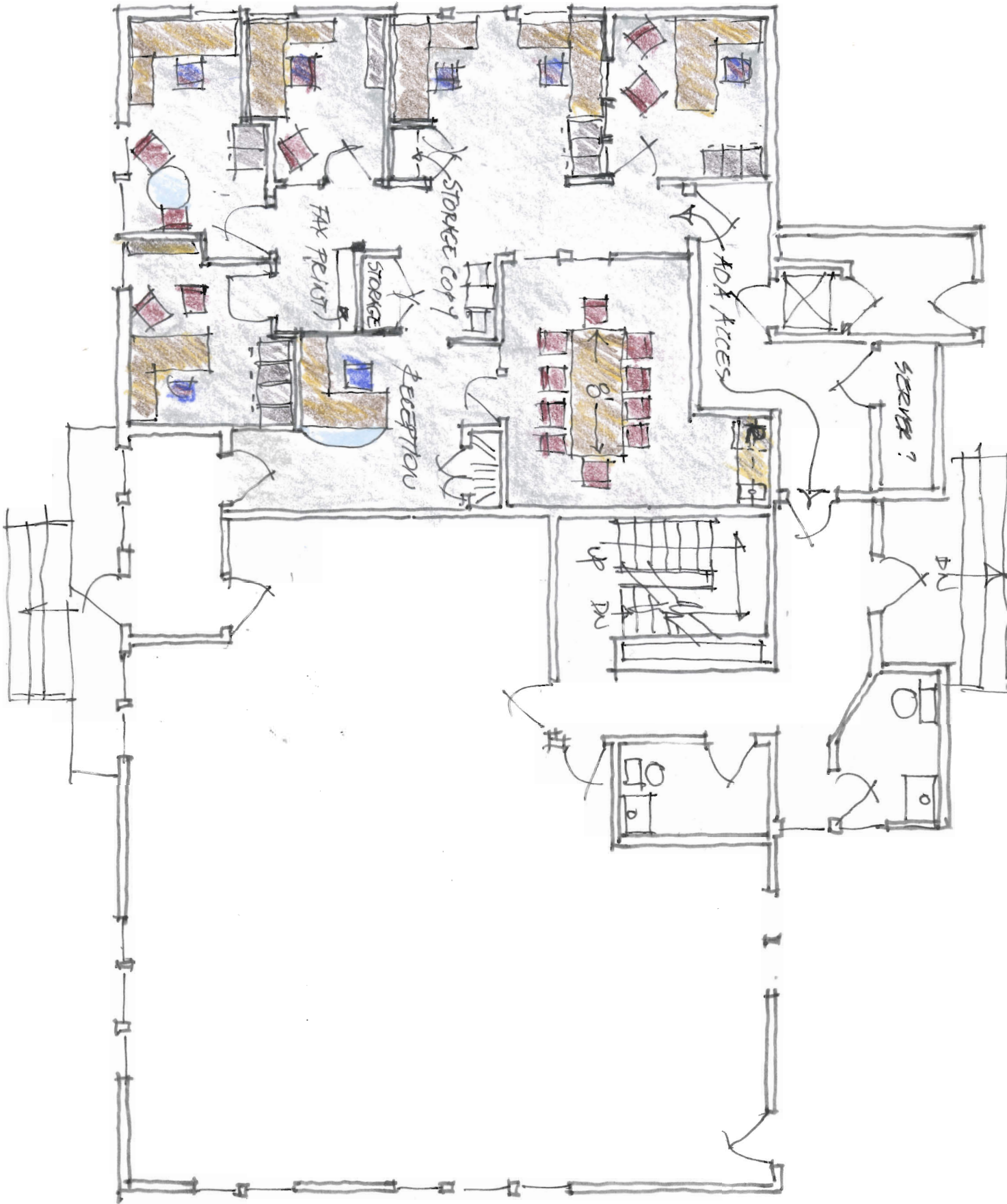
250 MAIN STREET

Montpelier, VT, USA



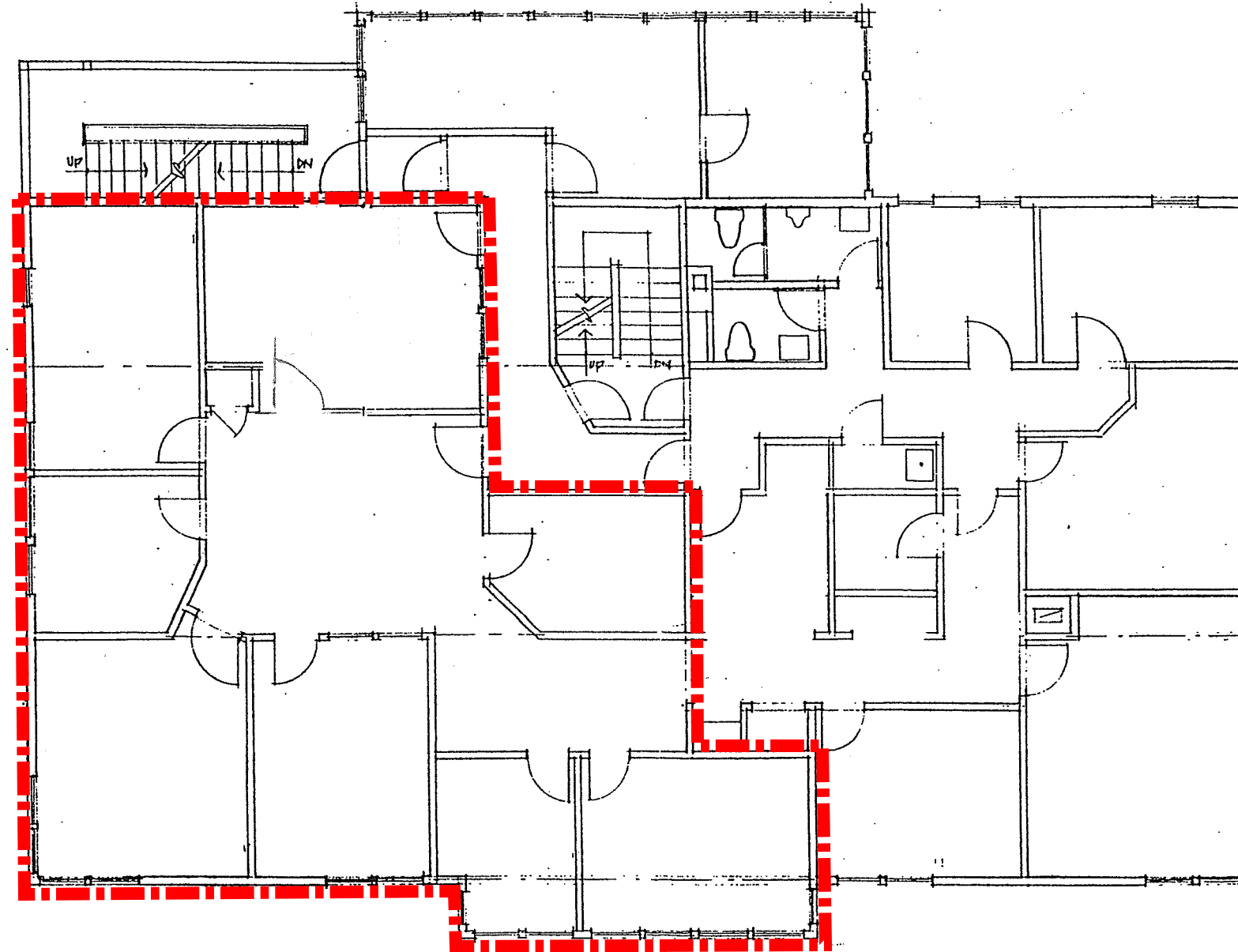
© 2014 Google

Timestamp: Date: 5/19/2012 44°15'50.21" N 72°32'34.19" W elev: 846 ft eye alt: 6327 ft



First Floor

Office PLAN OPTION 2  
 1/8" = 1'-0"  
 JAN. 15/14



○ SECOND FLOOR PLAN

NEC1  
HDQTRS  
EXISTING

BLACK  
RIVER  
DESIGN

SECOND  
FLOOR PLAN

SCALE  
1/4" = 1'-0"

DATE  
JAN 2005

DRAWN BY

CHECKED BY