

309 S. MAIN STREET
ROYAL OAK, MICHIGAN

OFFICE FOR LEASE
2,500 Square Feet Available



**SIGNATURE
ASSOCIATES**
KNOW SIGNATURE | KNOW RESULTS

PRIME ROYAL OAK LOCATION



PROPERTY FEATURES

- 2,500 square feet available
- Move in ready office space in prime Royal Oak location
- Kitchenette with coffee bar
- Signage available
- Creative loft feel with wood floors, open ceilings and windows which open onto Main Street
- Lease Rate: \$28.00/sq. ft. G + E



For more information, please contact:

DAN MORROW
(248) 799 3144
dmorrow@signatureassociates.com

JEFFREY TREPECK
(248) 359 0626
jtrepeck@signatureassociates.com

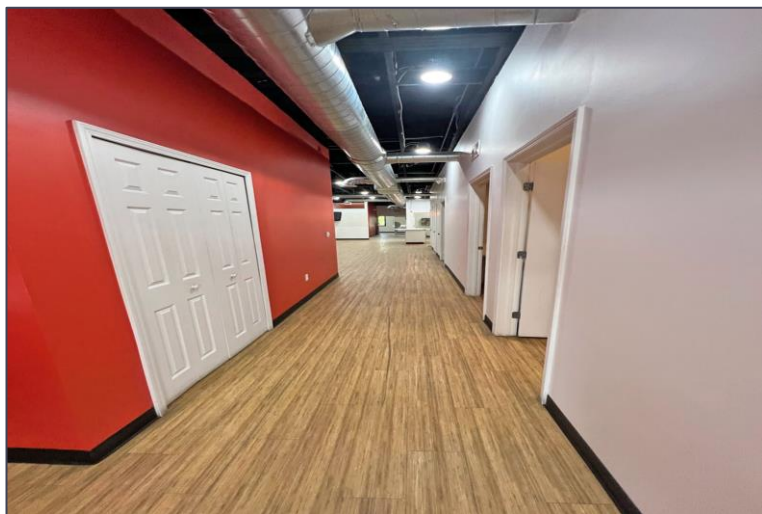
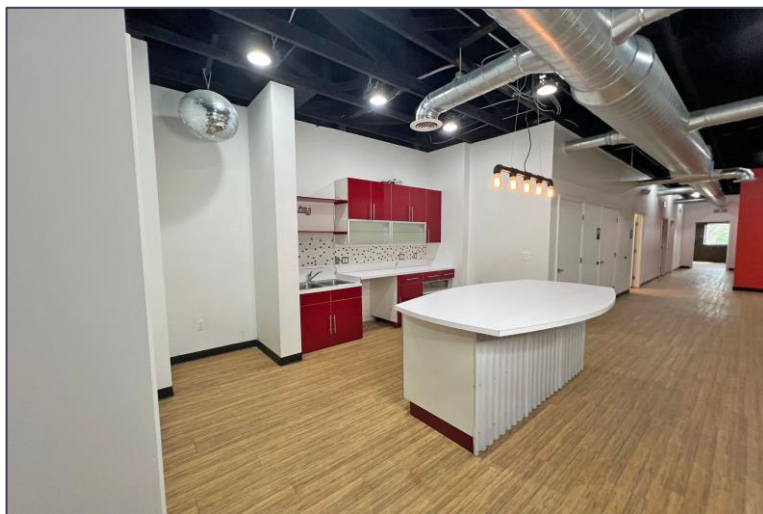
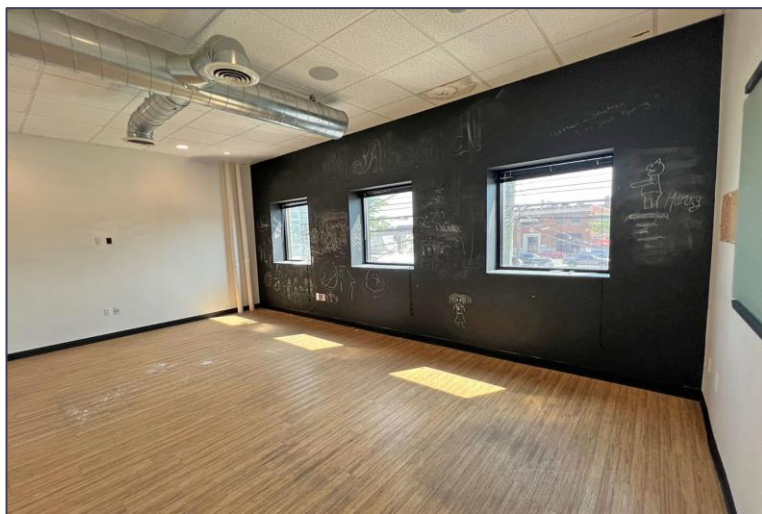
SIGNATURE ASSOCIATES
One Towne Square, Suite 1200
Southfield, MI 48076
www.signatureassociates.com

309 S. Main Street – Royal Oak, Michigan

Office For Lease

2,500
Square Feet
AVAILABLE

Interior Photos



For more information, please contact:

DAN MORROW

(248) 799 3144

dmorrow@signatureassociates.com

JEFFREY TREPECK

(248) 359 0626

jtrepeck@signatureassociates.com

SIGNATURE ASSOCIATES

One Towne Square, Suite 1200

Southfield, MI 48076

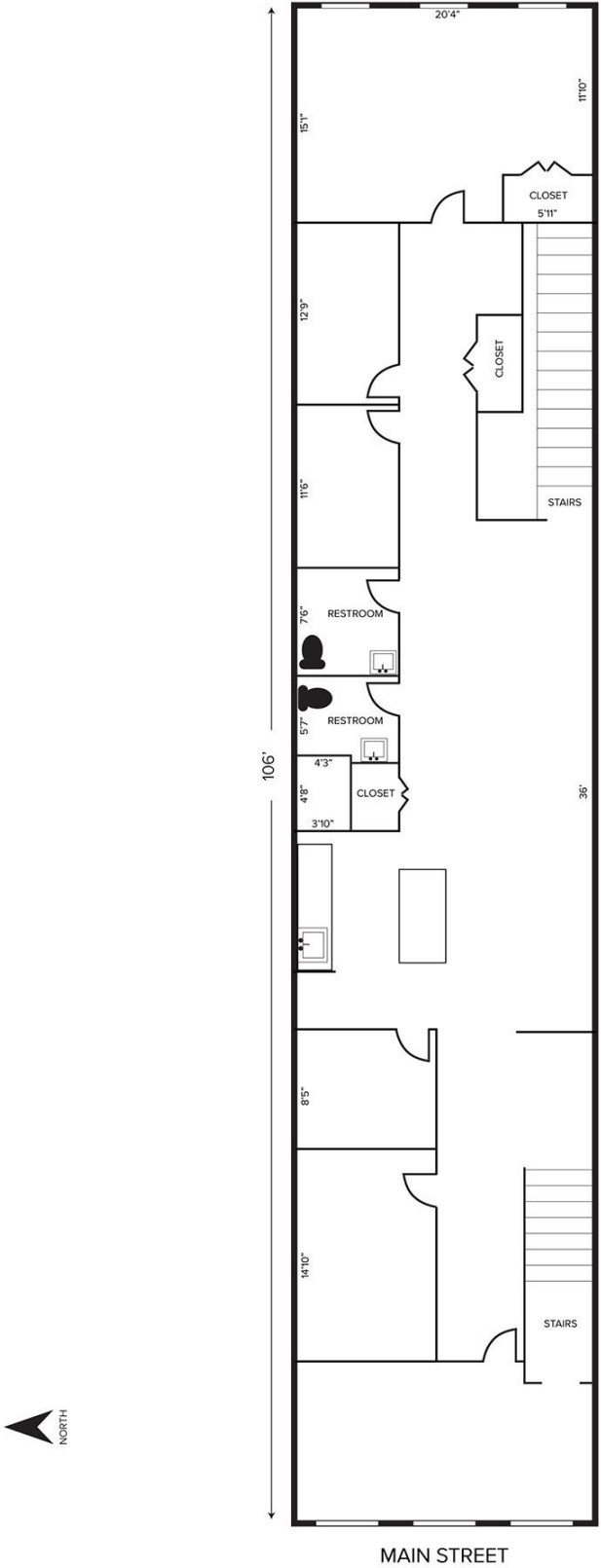
www.signatureassociates.com

309 S. Main Street – Royal Oak, Michigan

Office For Lease

2,500
Square Feet
AVAILABLE

Floor Plan



For more information, please contact:

DAN MORROW
(248) 799 3144
dmorrow@signatureassociates.com

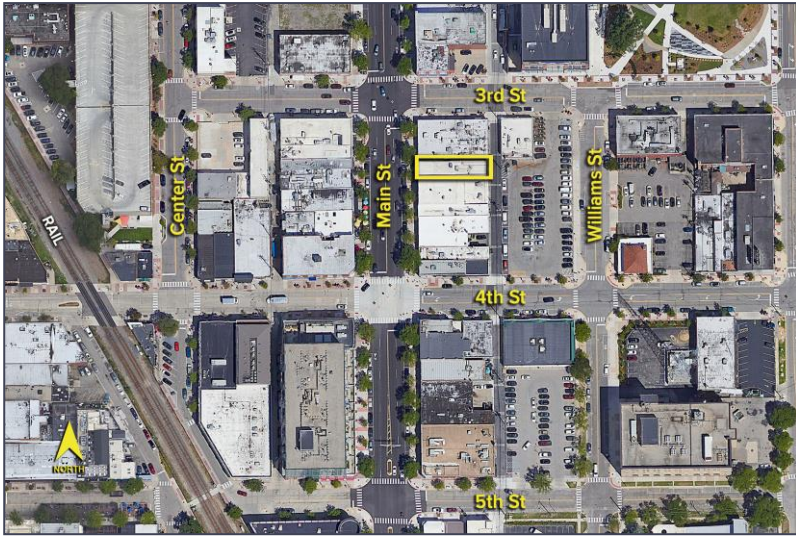
JEFFREY TREPECK
(248) 359 0626
jtrepeck@signatureassociates.com

SIGNATURE ASSOCIATES
One Towne Square, Suite 1200
Southfield, MI 48076
www.signatureassociates.com

309 S. Main Street – Royal Oak, Michigan

Office For Lease

2,500
Square Feet
AVAILABLE

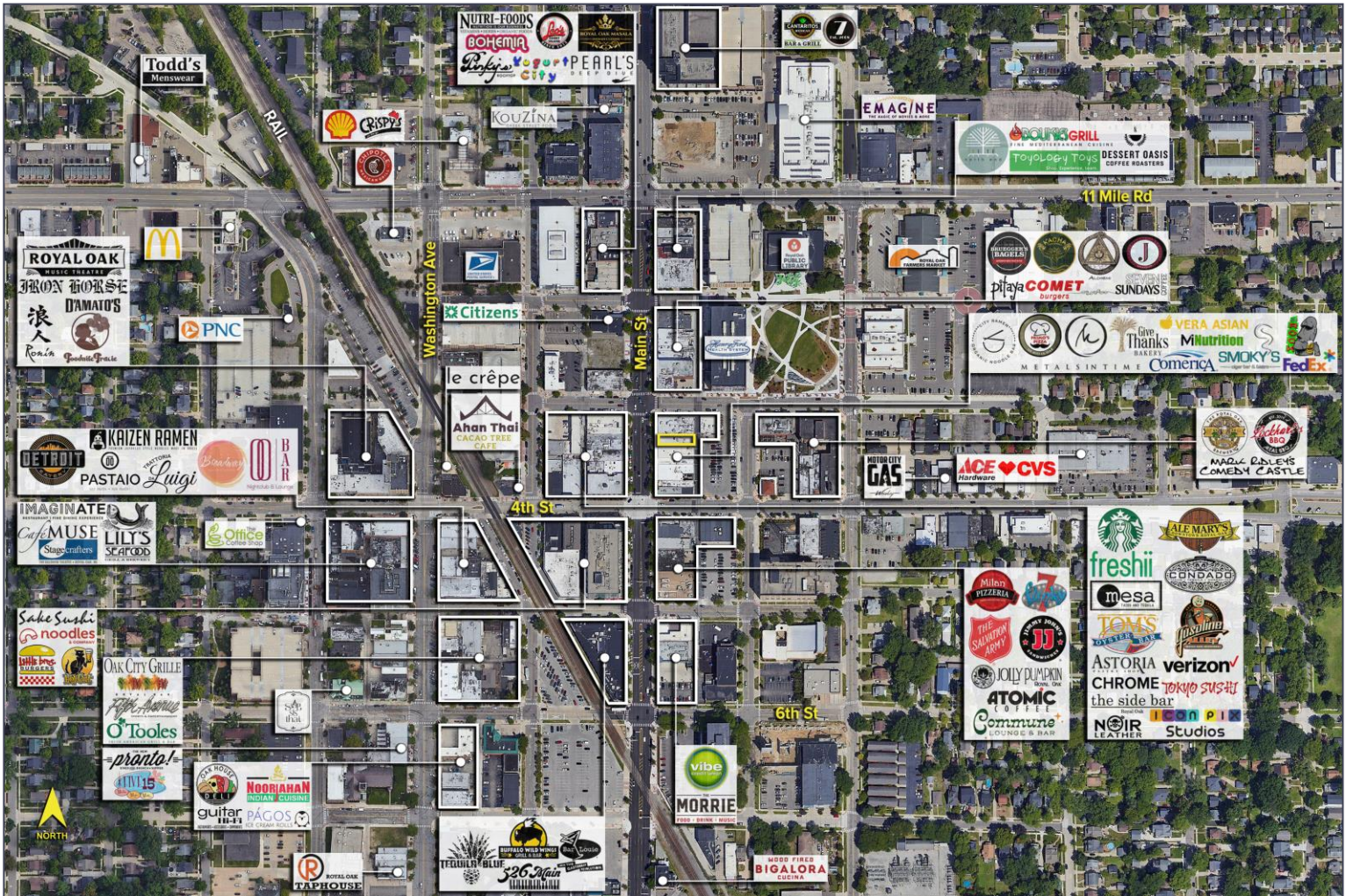


DEMOGRAPHICS

| | POPULATION | MED. HH INCOME |
|--------|------------|----------------|
| 1 MILE | 17,476 | \$108,916 |
| 3 MILE | 145,379 | \$92,846 |
| 5 MILE | 361,393 | \$78,731 |

TRAFFIC COUNTS (TWO-WAY)

| | |
|--------|---------------------------|
| 18,449 | S. Main St. N. of 4th St. |
| 14,278 | S. Main St. S. of 4th St. |
| 4,424 | 4th St. E. of S. Main St. |
| 3,997 | 4th St. W. of S. Main St. |



For more information, please contact:

DAN MORROW
(248) 799 3144
dmorrow@signatureassociates.com

JEFFREY TREPECK
(248) 359 0626
jtrepeck@signatureassociates.com

SIGNATURE ASSOCIATES
One Towne Square, Suite 1200
Southfield, MI 48076
www.signatureassociates.com