

FOR LEASE

Owned and Operated by



7142 AMBASSADOR RD

WINDSOR MILL, MD 21244

50,595 SF



PROPERTY VITALS

Availability: IMMEDIATE - 50,595

Office: 2,979

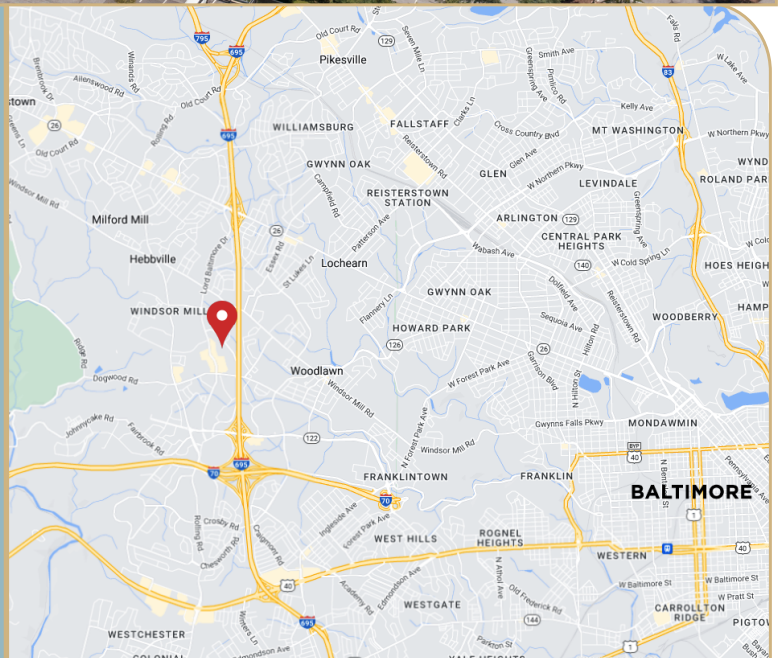
Column Spacing: 32'w x 32'd

Loading: 15 dock doors

Truck Court: 70'

Zoning: ML-IM

Power: 2000 amps. 3phase 277/480v



LEASING INFO & CONTACT

Brian Kruger
Thomas Hinder
Erik Evans

(410) 625-4211 / brian.kruger@nmrk.com
(410) 844-4010 / thomas.hinder@nmrk.com
(410) 844-4003 / erik.evans@nmrk.com

NEWMARK

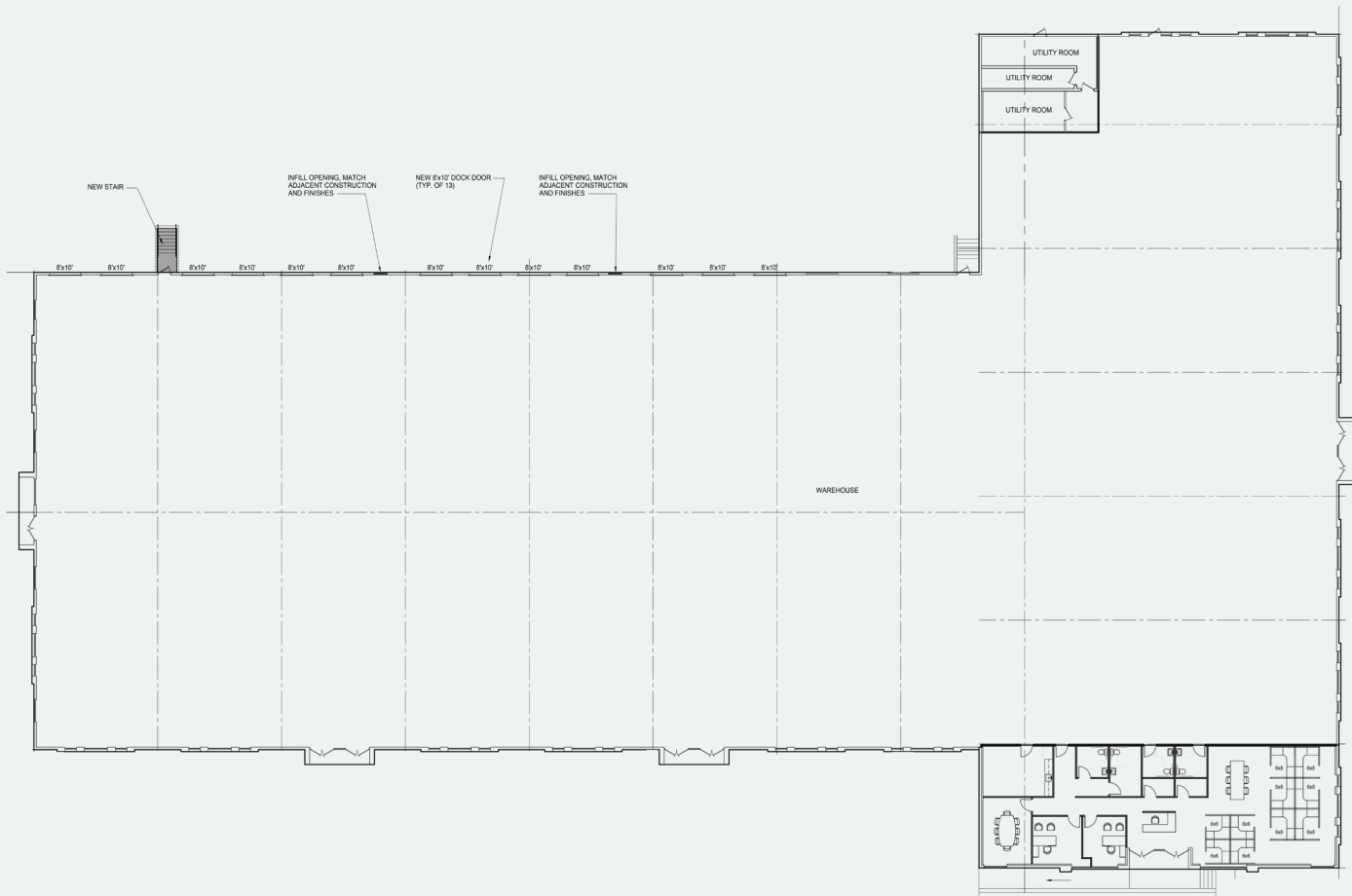
This is not an offer or acceptance of an offer to lease space. A lease will only be offered or made in a written agreement signed by landlord. No representation or warranty of any kind is made by landlord unless set forth in a written definitive lease executed by the landlord.

FOR LEASE

7142 AMBASSADOR RD

Woddlawn, MD 21244

50,595 SF



**LEASING INFO
& CONTACT**

Brian Kruger	(410) 625-4211 / brian.kruger@nmrk.com
Thomas Hinder	(410) 844-4010 / thomas.hinder@nmrk.com
Erik Evans	(410) 844-4003 / erik.evans@nmrk.com

NEWMARK