

BOUTIQUE OFFICE SPACES



AT HARBOURSIDE
TORQUAY

Hampton
by HILTON

OPENING SPRING 2020

THAT GROUP

FACTS & FEATURES

BE A PART OF TORQUAY'S LARGEST PURPOSE BUILT DEVELOPMENT IN A GENERATION

OFFICE SPACE, GRADE A, OPEN PLAN

OFFICE 1 2041 sq.ft OFFICE 2 2624 sq.ft

SUPERB LOCATION ADJACENT TO TORQUAY HARBOUR, WITH ACCESS TO AMPLE NEARBY CAR PARKING

DELIVERY OF UNITS - SPRING 2020

HOTEL OPENING/OVERALL P.C JUNE 2020

TERMS ON APPLICATION

DEVELOPMENT ANCHORED BY A 131 BED HAMPTON BY HILTON HOTEL.



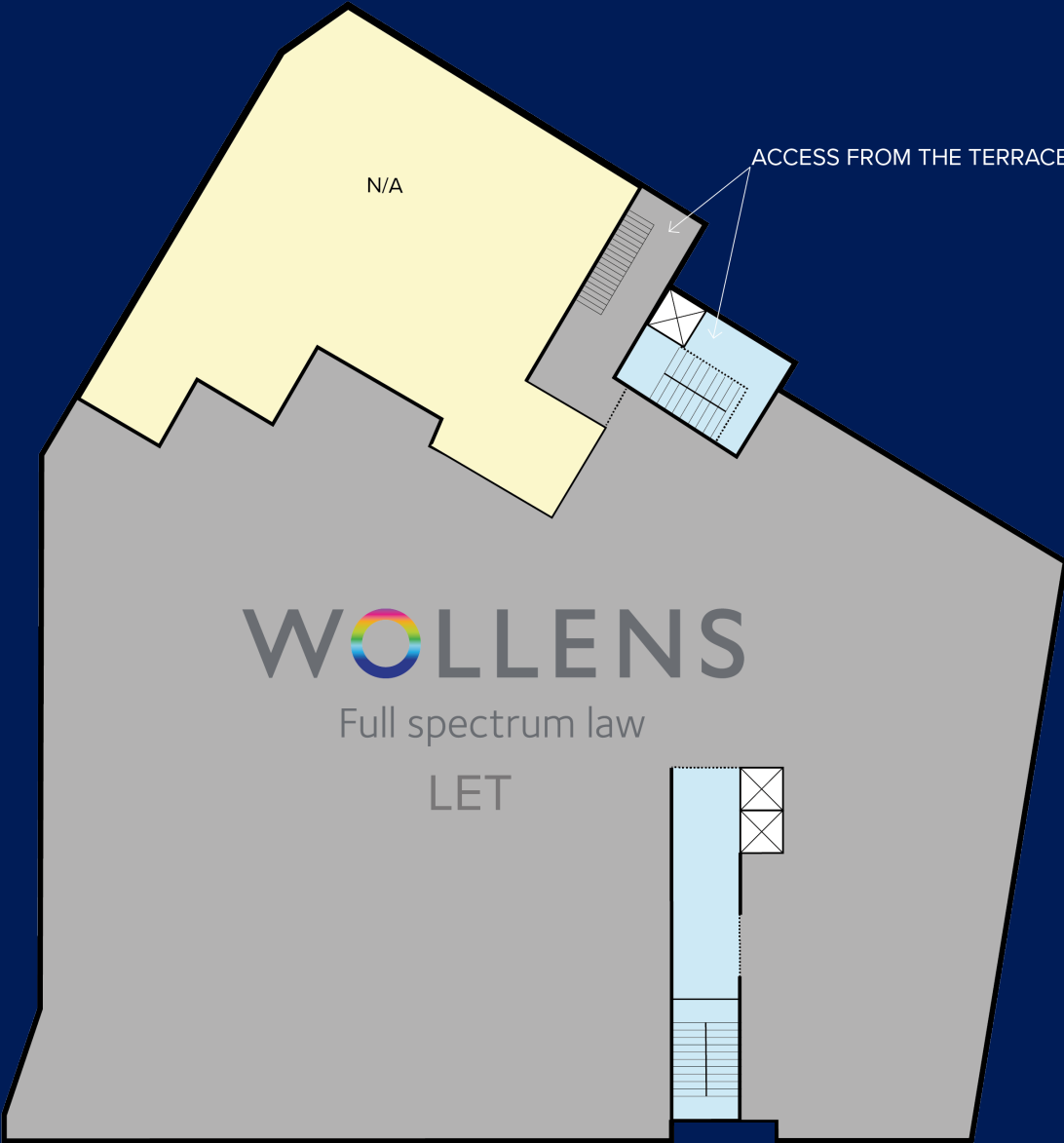
1st FLOOR

THERE IS FLEXIBILITY
ON OFFICE AREAS
SUBJECT TO AGREEMENT



TERRACE

2nd FLOOR



WOLLENS

Full spectrum law

LET

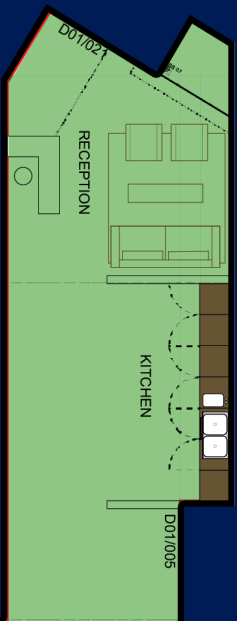
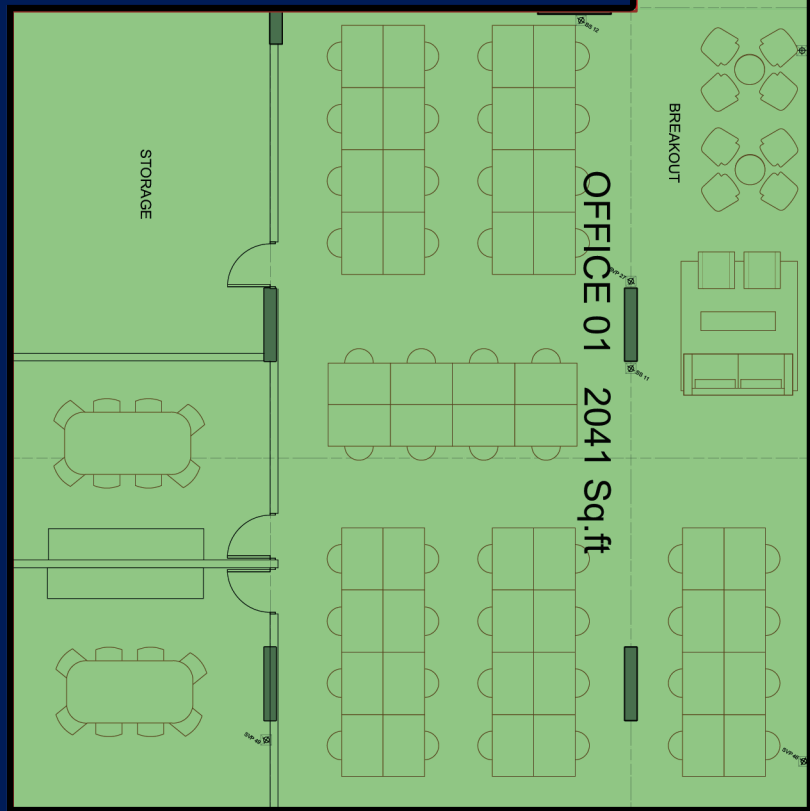
ACCESS FROM THE TERRACE FOR OFFICES

TORWOOD STREET

TORWOOD STREET
ENTRANCE ON
GROUND FLOOR

NOTIONAL LAYOUTS

Office 1
2041 Sq.ft



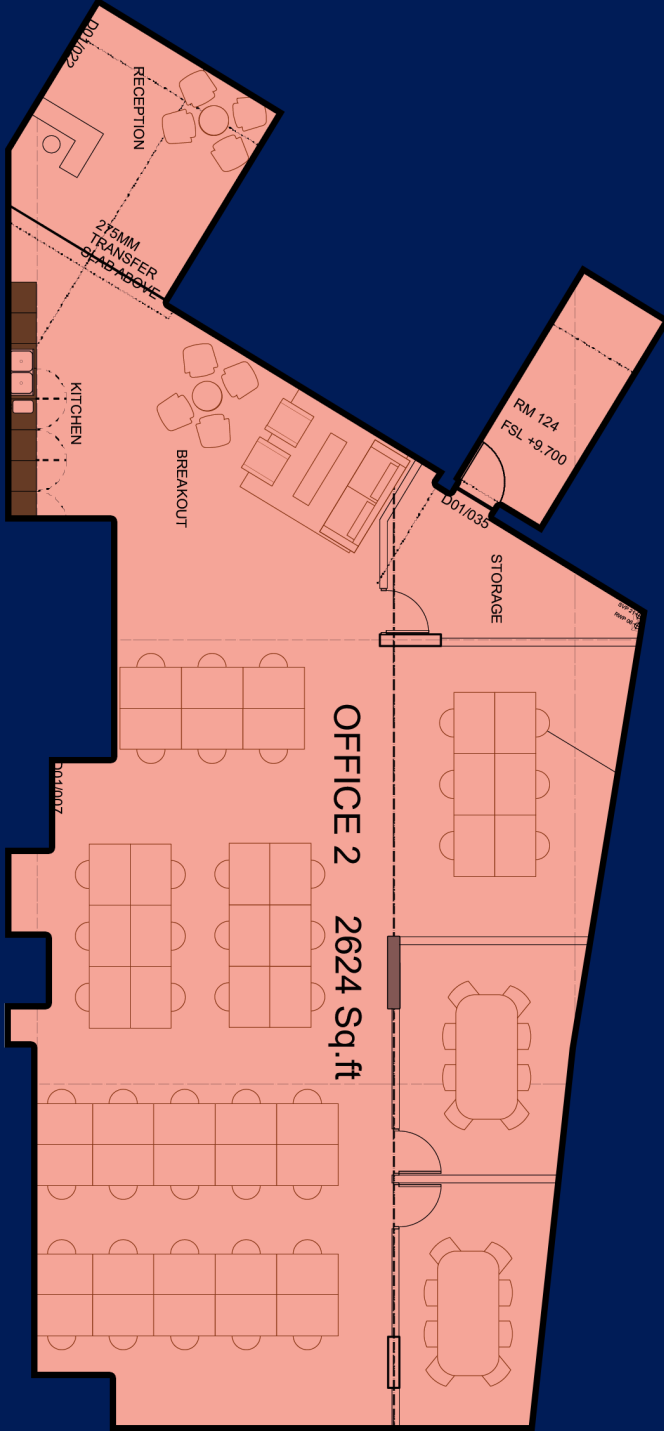
1st FLOOR



NOTIONAL LAYOUTS

1st FLOOR

Office 2
2624 Sq.ft





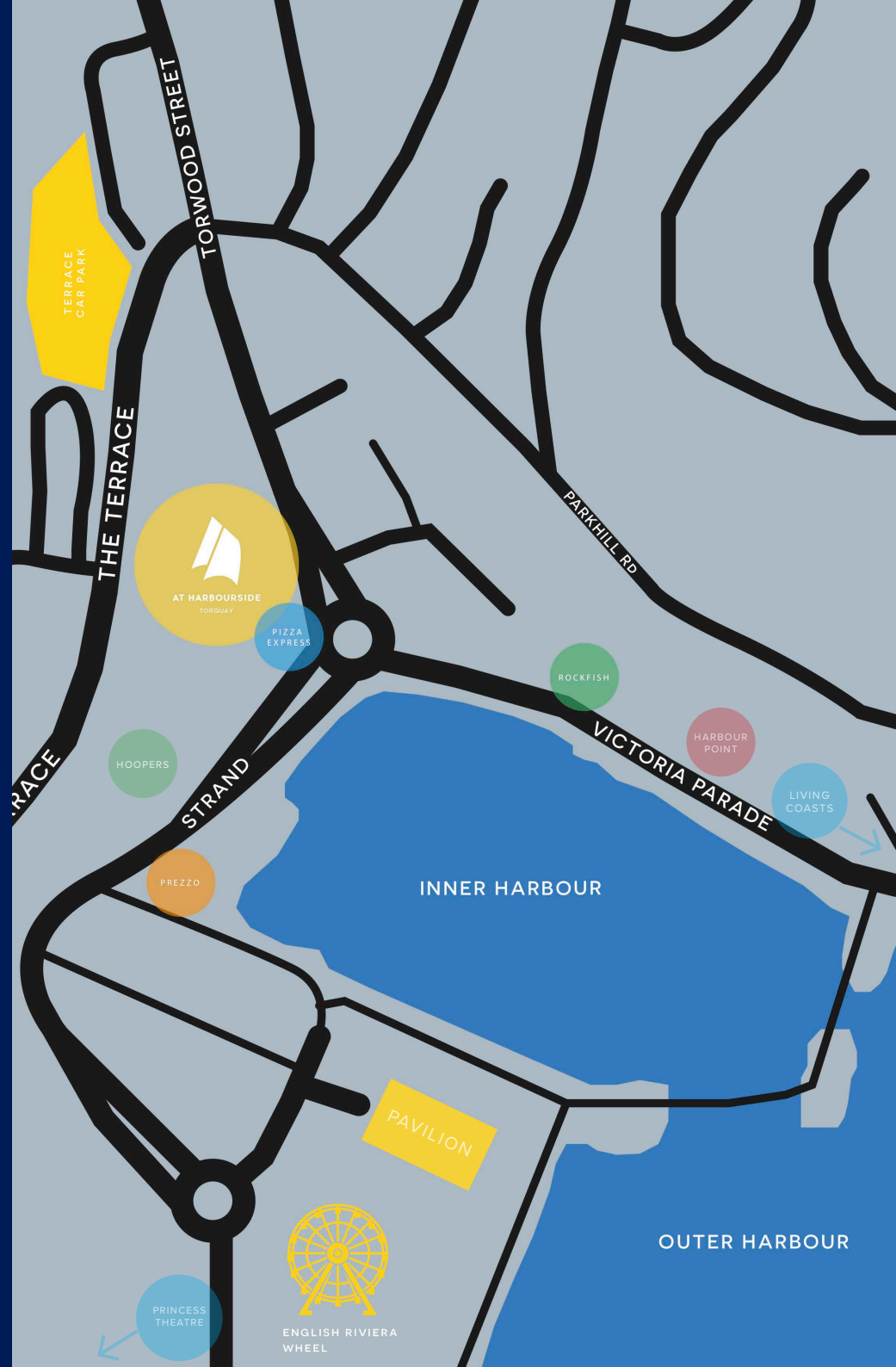
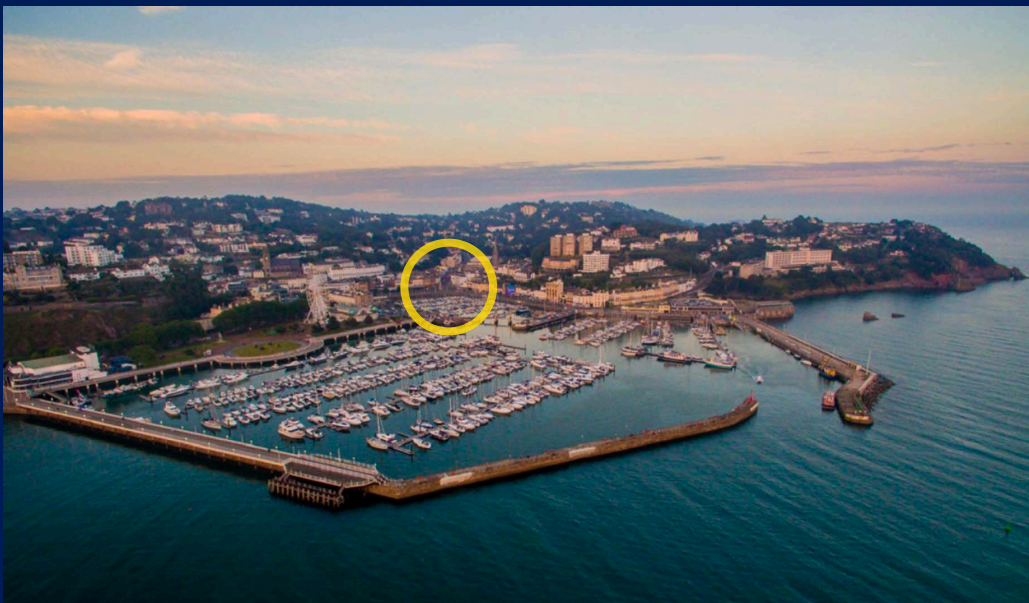
THE OFFICE SPACES

AN EXCLUSIVE MIXED USE DEVELOPMENT SITUATED ADJACENT TO TORQUAY HARBOURSIDE AND ACCESSED VIA BOTH THE TERRACE & TORWOOD STREET, FEATURING GRADE A, OPEN PLAN OFFICE SPACE THROUGHOUT.



*Visual of the development view on Torwood Street

LOCATION





CONSTRUCTION AS OF FEBRUARY 2020





ALL ENQUIRIES TO JOINT SOLE AGENTS

arc incorporating
downing
bentley
Retail Property Consultants

0117 252 0532
www.arcretail.co.uk

Bettesworths 

Tel: 01803 21 20 21
Email: paul@bettesworths.co.uk
Web: www.bettesworths.co.uk

Hampton
by HILTON

ATHARBOURSIDE.CO.UK

THAT GROUP