



EXPANSIVE WINDOW LINE

RETAIL SPACE ENTRANCE

FULLY VENTED

400 NEWARK AVE
JERSEY CITY, NJ 07302

Gregory D. Edgell
Licensed Real Estate Broker
C: (973) 610-5145
greg@gridrealestate.biz



– Fully Vented Restaurant Space On Newark Ave

400 Newark Avenue is located directly on the cusp of Journal Square and Downtown located in the Village Section of Jersey City. Surrounded by significant luxury development where household income and demographics continue to evolve on a yearly basis this location is prime for a restaurant to serve the neighborhoods needs. Just down the hill from the new Hudson County Court House and Journal Square mega-developments as well as neighboring elementary and middle schools.

The building abuts the NJ Turnpike roadway which allows a large wall of glass with guaranteed unobstructed views on the Western facade. Space will be delivered with ventilation chase, bathroom, HVAC and all MEPs stubbed. The small footprint allows for a reasonable PPSF for a small operator. Inquire today!

LOCATION

THE VILLAGE
DOWNTOWN JERSEY CITY

AVAILABLE

±700 - 1,419 SF
NO BASEMENT

AVAILABLE

IMMEDIATELY

CEILING HEIGHT

12'

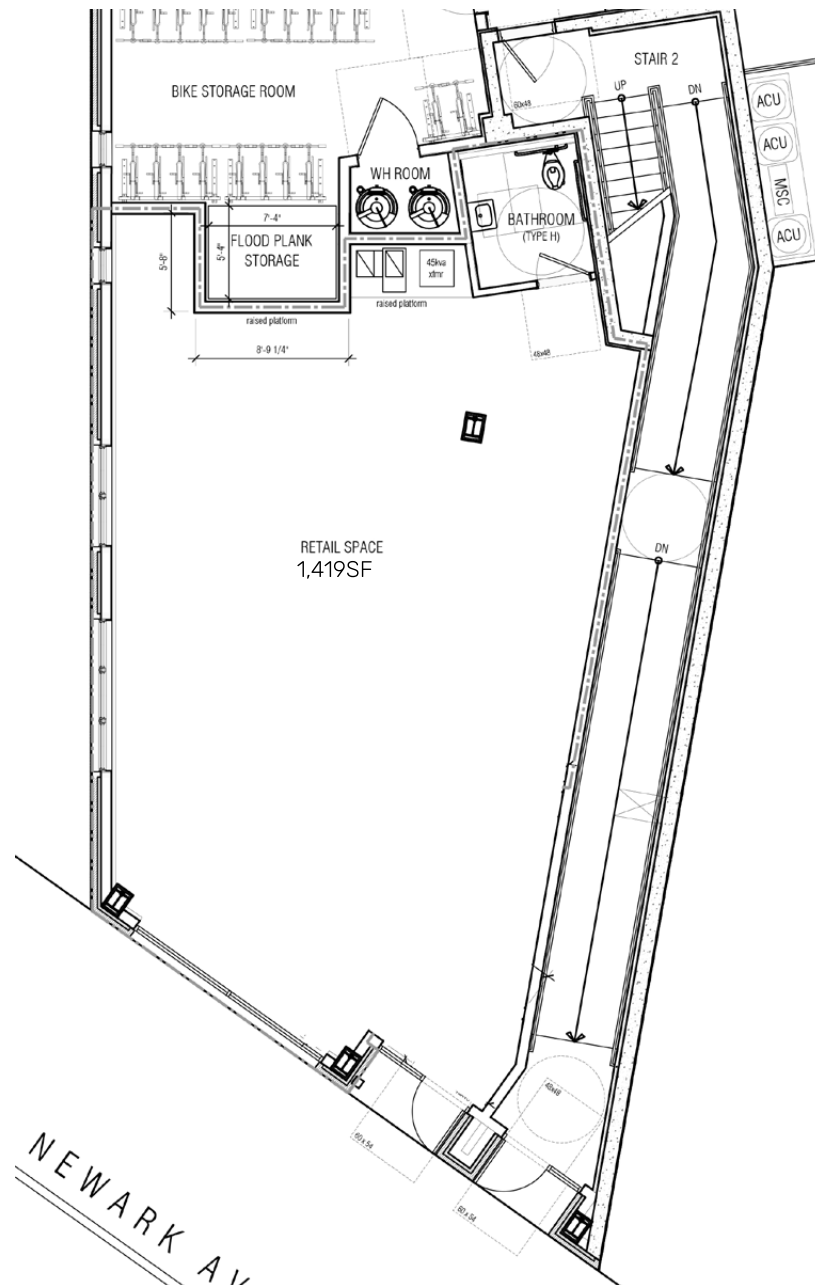
TERM

LONG TERM

NEIGHBORS

WHITE EAGLE HALL, THE LITTLE GYM, MADAME CLAUDES, CELLAR 335, PRATO BAKERY, RABBLE & LION, HEALY'S TAVERN, BOYCE MODE







GRID EXCLUSIVE CONTENT

2022 TRENDS REPORT

We are pleased to share the 2022 Jersey City Trends map with our friends and clients. The Trends Map was developed to help real estate professionals, the development community and the community at large, to get a snap-shot view of real estate trends across the entire city; and to see how the city is growing and redeveloping the previous years.

The “trends” are gleaned from our interviews and discussions with other professionals and developers whose primary market is Jersey City. We hope this map is helpful in understanding how the city is growing. Please view this map as a starting point for your investigation, not an end point.

[Download Trends Map >>](#)

[Download Trends Report >>](#)

GRID BITS NEWSLETTER

Highlighting ALL of the real estate news each week from the George Washington Bridge to Bayonne Bridge! Grid Bits is a weekly news aggregator that updates our readership on all the new development projects, municipal & political news, green space & parks, new retail, industrial and office leases, regional lawsuits, community kickback and more!

[Explore Now >>](#)

For additional information on this listing please contact:

Grid Real Estate, LLC

201 Marin Blvd, #106
Jersey City, NJ 07302
O: (201) 300-6489
gridrealestate.biz

Gregory D. Edgell

Licensed Real Estate Broker
C: (973) 610-5145
greg@gridrealestate.biz

Bobby Antonicello Jr.

Licensed Real Estate Broker
C: (551) 795-2836
bobby@gridrealestate.biz

