

1007 W. ANN ARBOR TRAIL
SUITE 200
PLYMOUTH, MICHIGAN



**SIGNATURE
ASSOCIATES**
KNOW SIGNATURE | KNOW RESULTS

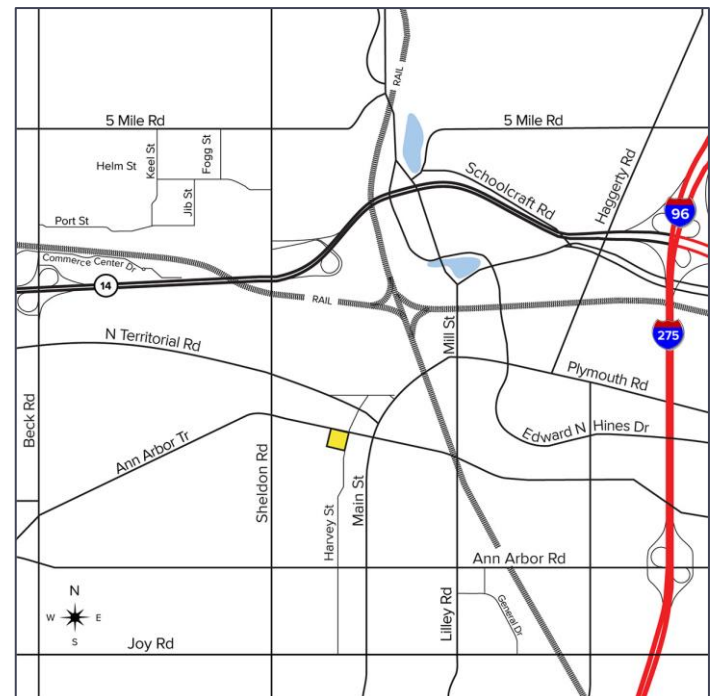
OFFICE FOR LEASE
2,100 - 4,200 Square Feet Available

PREMIUM DOWNTOWN OFFICE



PROPERTY FEATURES

- 2,100 - 4,200 square feet available
- High-visibility location in downtown Plymouth near Kellogg Park and many restaurants
- Class “A” office building with premium finishes throughout
- Monument signage and on-site parking
- Great opportunity for client facing businesses
- Lease Rate: \$25.00/sq. ft. NNN



For more information, please contact:

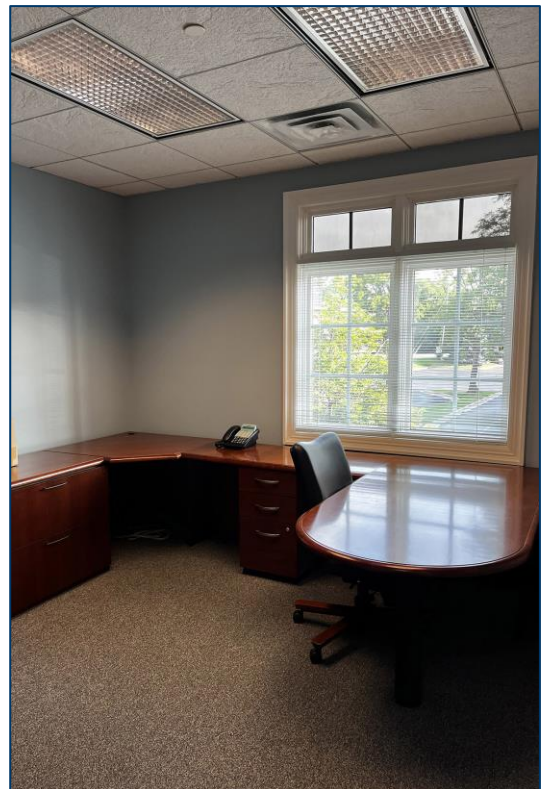
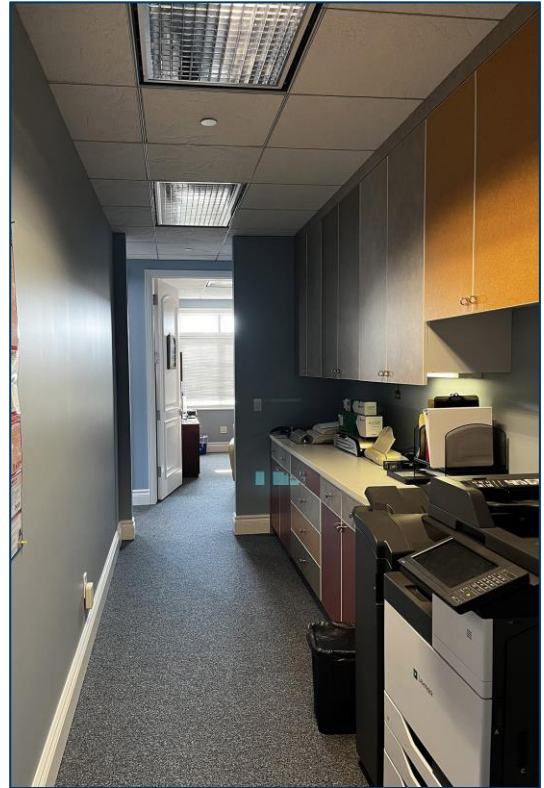
JASON STOUGH
(248) 948 4180
jstough@signatureassociates.com

SIGNATURE ASSOCIATES
One Towne Square, Suite 1200
Southfield, MI 48076
www.signatureassociates.com

1007 W. Ann Arbor Trail – Plymouth, Michigan

Office For Lease

2,100-4,200
Square Feet
AVAILABLE



For more information, please contact:

JASON STOUGH

(248) 948 4180

jstough@signatureassociates.com

SIGNATURE ASSOCIATES

One Towne Square, Suite 1200

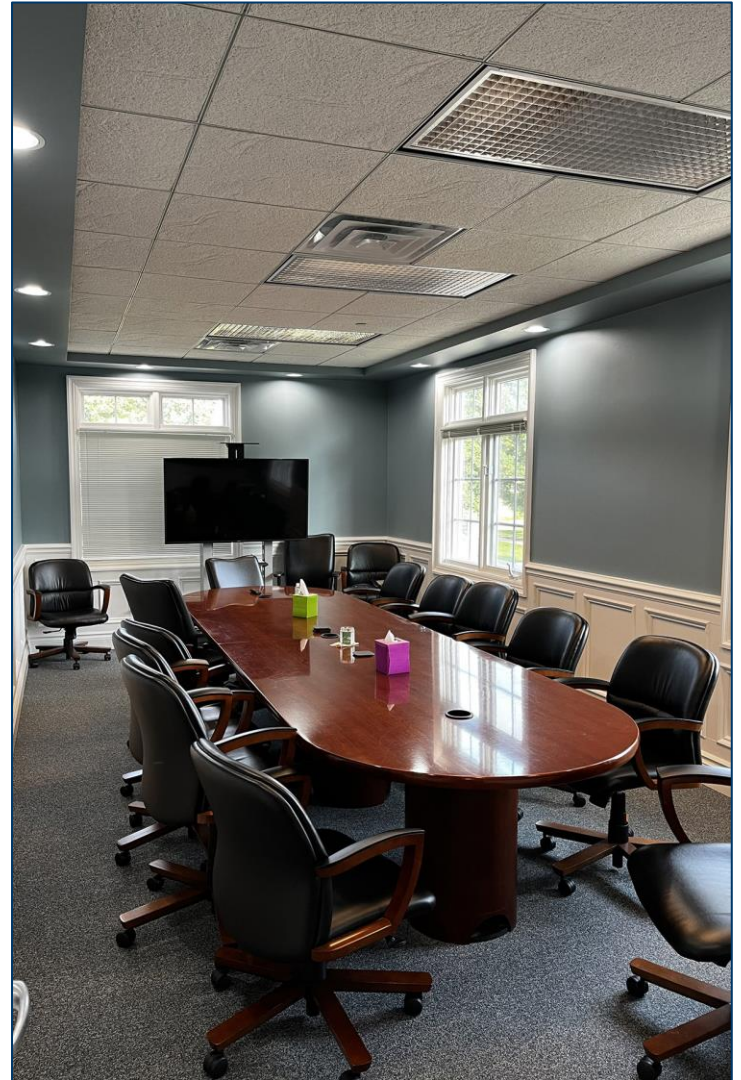
Southfield, MI 48076

www.signatureassociates.com

1007 W. Ann Arbor Trail – Plymouth, Michigan

Office For Lease

2,100-4,200
Square Feet
AVAILABLE



For more information, please contact:

JASON STOUGH
(248) 948 4180
jstough@signatureassociates.com

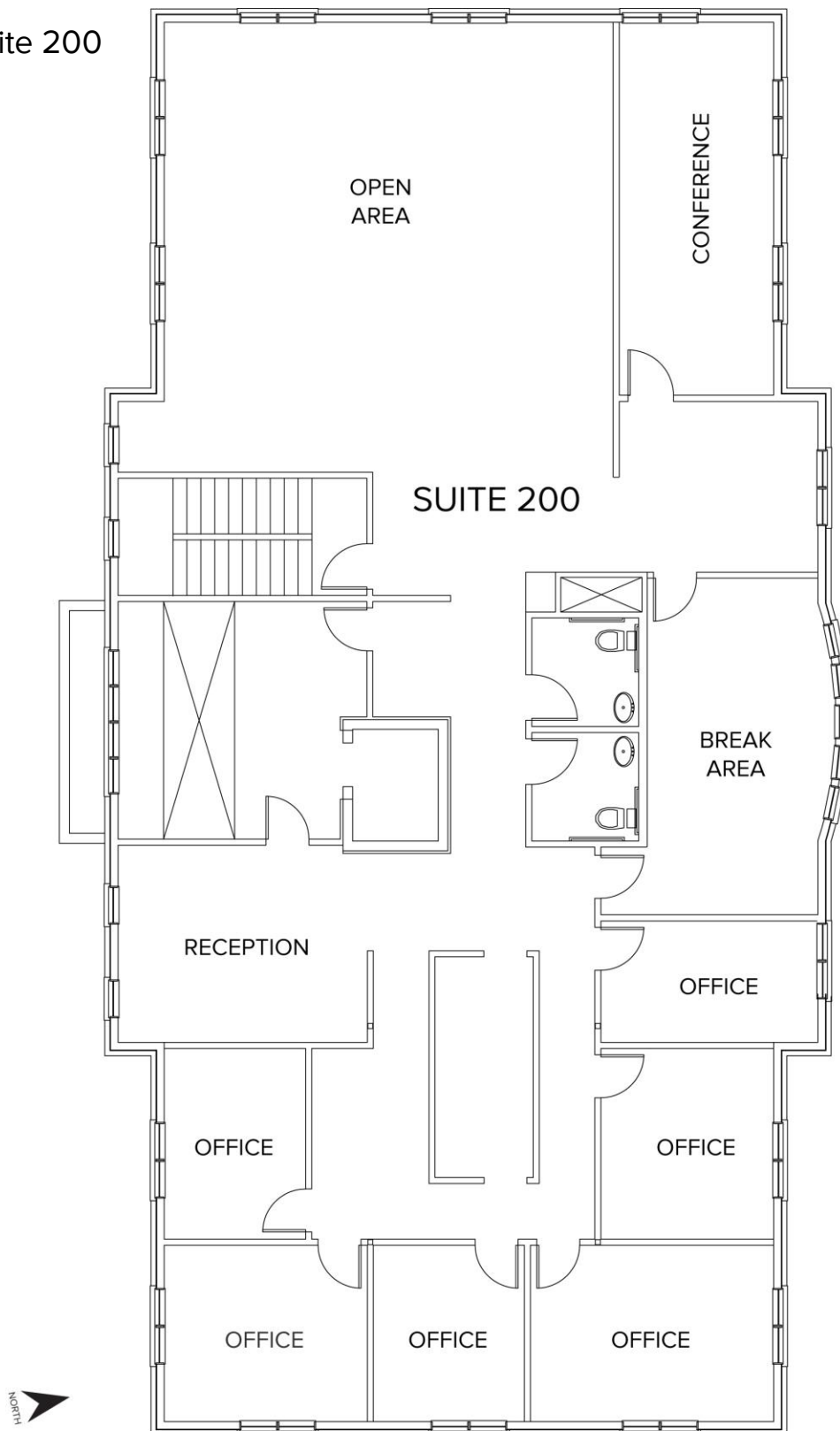
SIGNATURE ASSOCIATES
One Towne Square, Suite 1200
Southfield, MI 48076
www.signatureassociates.com

1007 W. Ann Arbor Trail – Plymouth, Michigan

Office For Lease

2,100-4,200
Square Feet
AVAILABLE

Floor Plan - Suite 200



For more information, please contact:

JASON STOUGH

(248) 948 4180

jstough@signatureassociates.com

SIGNATURE ASSOCIATES

One Towne Square, Suite 1200

Southfield, MI 48076

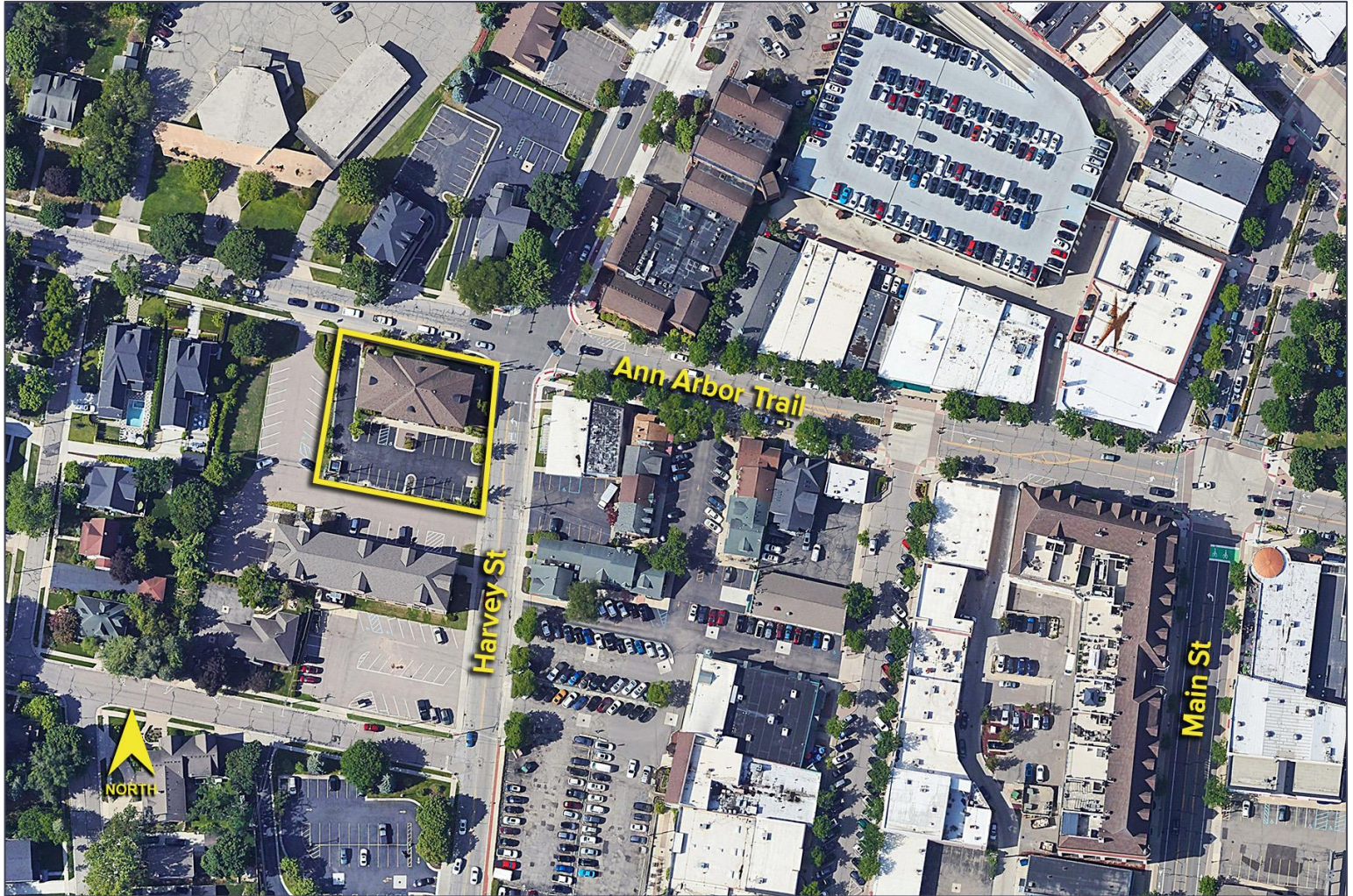
www.signatureassociates.com

1007 W. Ann Arbor Trail – Plymouth, Michigan

Office For Lease

2,100-4,200
Square Feet
AVAILABLE

Aerial



For more information, please contact:

JASON STOUGH
(248) 948 4180
jstough@signatureassociates.com

SIGNATURE ASSOCIATES
One Towne Square, Suite 1200
Southfield, MI 48076
www.signatureassociates.com