

SUMMERLIN PROFESSIONAL OFFICE SOUTH SHORE PROFESSIONAL CENTER

Great Lease
Incentives
Offered!

760 sq ft to 4,475 +/- Office Space
Medical & Professional Offices Available
Fully Built Out Dentist Office Available
45,000+ Cars a day on Lake Mead Blvd.
Well Maintained and Managed
Generous incentives offered
Landlord Motivated to make DEALS!!



For more information call
Jody Wallace 1-702-
274-1204
jodysellsvegas@gmail.com

8440 West Lake Mead Blvd.



The property consists of a two story multi-tenant office building. The building is situated on 2 acres. The property offers great visibility, dense housing population and convenience for all types of businesses looking to locate in the area. As of 2012, there was approximately 370,292 residents living within a five (5) mile radius.

The property is located at the northwest corner of Lake Mead Boulevard and Harbor Drive, having the civic address of 8440 West Lake Mead Boulevard. The Property location is one of the main corridors into the Summerlin Master Plan community and provides access to downtown Las Vegas via Summerlin Parkway on US 95.



**For more information call
Jody Wallace 1-702-274-1204
jodysellsvegas@gmail.com**



**For more information call
Jody Wallace 1-702-274-1204
jodysellsvegas@gmail.com**

Suite #112 +/- 1,550 sq. ft.

Floor Plan Coming Soon

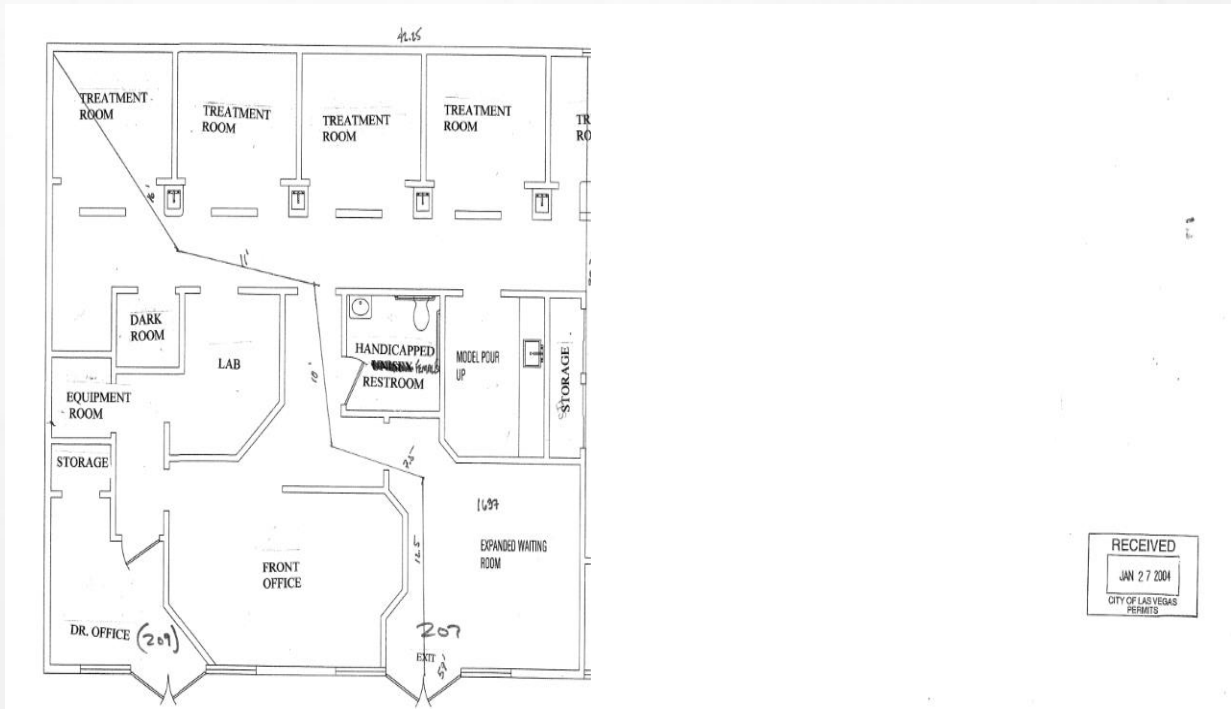
Suite #212 +/- 760 sq. ft

Floor Plan Coming Soon

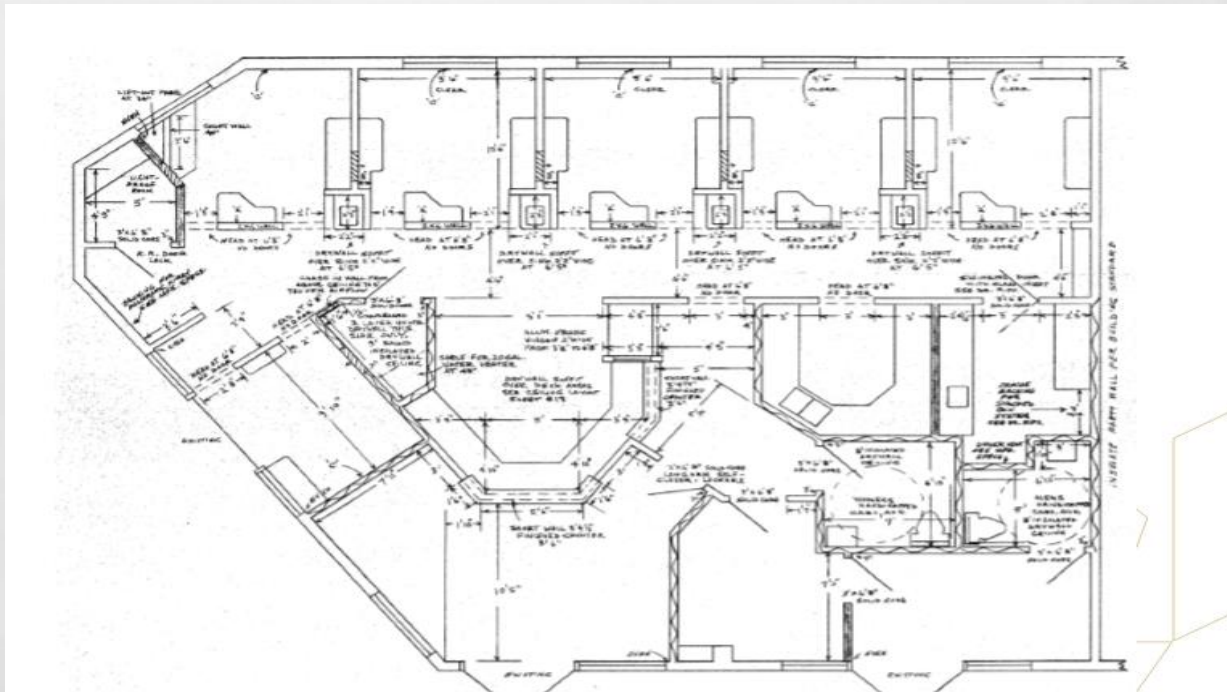


**For more information call
Jody Wallace 1-702-274-1204
jodysellsvegas@gmail.com**

Suite #, 207, +/- 1,735 sq. ft.



Suite #211, +/- 2,345 sq. ft.



The above information has been obtained from sources we believe to be reliable, however we do not take responsibility for its correctness.



For more information call
Jody Wallace 1-702-274-1204
jodysellsvegas@gmail.com