

# FOR LEASE

AAA CENTERPOINTE • 49,000 SF OFFICE BUILDING



6 CENTERPOINTE DRIVE  
LAKE OSWEGO, OREGON

**Available:** 440: 2,689 RSF (+/-) \$32.00 FSG

**Parking:** 3 per 1,000 RSF

- Features:**
- Remodeled common areas, including restrooms & showers
  - Beautiful park-like setting
  - Excellent access to I-5 and Hwy 217
  - Adjacent to many restaurants and retail services

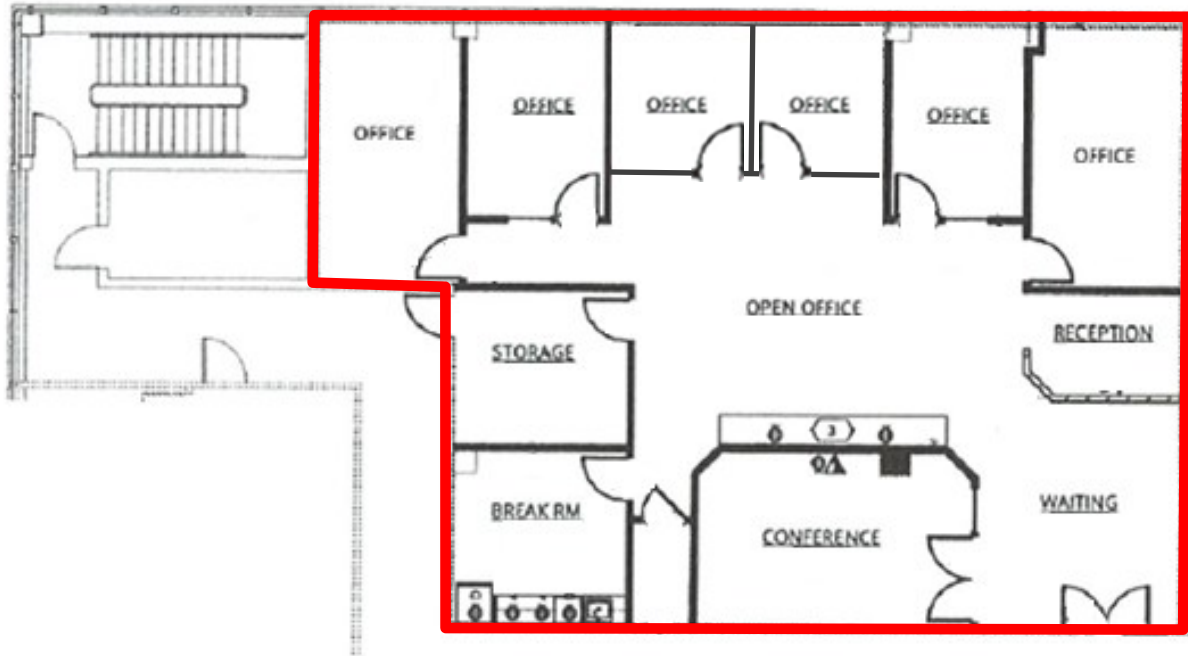


**John Brandhorst**  
*Licensed in Oregon*  
jbrandhorst@dougbear.com

1200 NW Naito Parkway • Suite 180 • Portland, OR 97209 • (503) 222-5100

Information contained herein has been obtained from others and is considered to be reliable. However, a prospective purchaser or lessee is expected to verify all information to their own satisfaction. [www.dougbear.com](http://www.dougbear.com)

**Adam Bean, SIOR**  
*Licensed in Oregon*  
adambean@dougbear.com



Suite 440: 2,689 RSF (+/-)



For Information, Please Contact:

**John Brandhorst**  
*Licensed in Oregon*  
[jbrandhorst@dougbean.com](mailto:jbrandhorst@dougbean.com)

**Adam Bean, SIOR**  
*Licensed in Oregon*  
[adambean@dougbean.com](mailto:adambean@dougbean.com)

1200 NW Naito Parkway • Suite 180 • Portland, OR 97209 • (503) 222-5100

Information contained herein has been obtained from others and is considered to be reliable. However, a prospective purchaser or lessee is expected to verify all information to their own satisfaction. [www.dougbean.com](http://www.dougbean.com)